

Dow Chemical files motion to change herbicide hearing

MIDLAND, Mich. - The Dow Chemical Company has filed motions with the Chief Administrative Law Judge of the Environmental Protection Agency seeking

prompt initiation of a broad fact-finding hearing on EPA's proposed cancellation of the registration of two herbicides. At the same time Dow announced its im-

mediate withdrawal from the Agency's recently begun 'suspension' hearings.

"We have participated in two days of 'suspension' hearings before a three-man

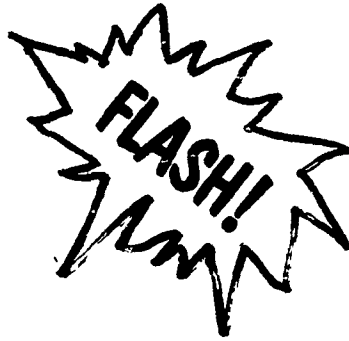
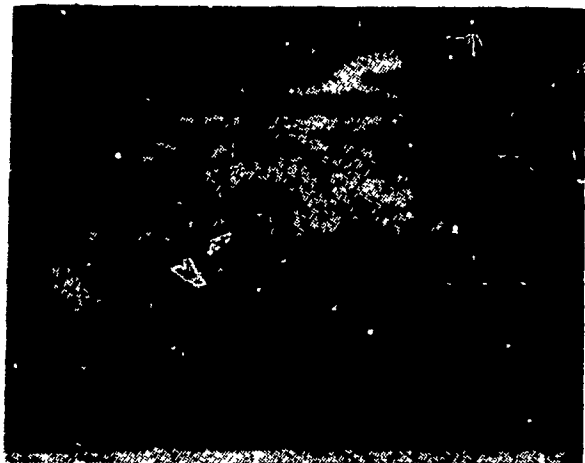
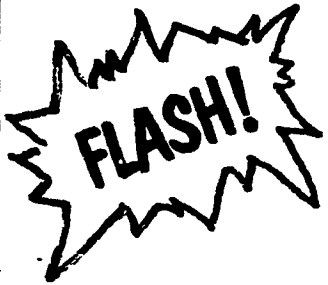
panel of EPA employees," Dow attorney Michael J. Traynor said, "to determine if 2,4,5-T and silvex herbicides should remain off the market during the upcoming

six-month to two-year cancellations process. It has become apparent that the fundamental issues, which are the long-term safety and benefits of these products, will not be considered, therefore we are withdrawing from the 'suspension' hearings and pressing for prompt com-

mencement of the broader cancellation hearings.

"This action is not an abandonment of the products or their defense, but simply a means to expedite the final resolution of their futures by beginning the cancellation hearings immediately.

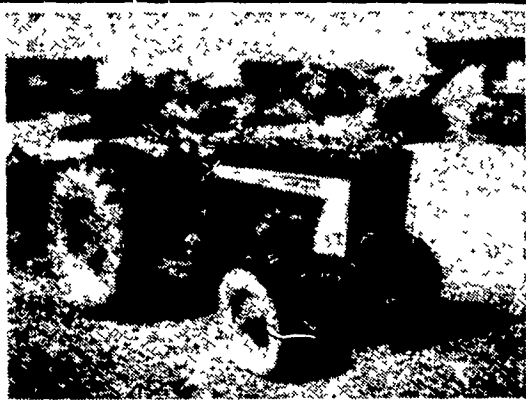
NOTICE



We have been selected to be a John Deere Engine Distributor. We will be stocking and distributing engines to be used as stationary power plants or as repower applications in John Deere tractors, combines, and self-propelled equipment. Please call us for your power requirements.



Ford 4-16" Plow \$950.



IHC 504 Gas Tractor \$3,250.



Brady 9 Tooth Chisel Plow \$1,050.



Used Kubota Tractor w/Loader Model L225, A-1 Condition \$4,375.

USED TRACTORS

John Deere 50 Tractor \$1,250.00

USED HARVESTER SPECIALS

NH 880 2-row narrow row head \$3,650.00
 NH 717 Single Row Head, 9 Knife Cutter Bar 1,795.00
 NH 717 w/1-row head 2,195.00
 NH 717 1,175.00
 John Deere #12 w/single Row Head 150.00

USED BALER SPECIALS

New Holland 67 Baler \$775.00
 John Deere 14T 750.00
 John Deere 14T w/ejector 450.00
 John Deere 24T 950.00
 John Deere 24T w/thrower 1,750.00
 New Holland 275 w/thrower 2,350.00

USED GRAIN DRILLS

Co-op 15x7 Fert. Grain Drill w/grass seed attach \$750.00
 John Deere 15x7 FBB Drill 550.00
 Ontario 14x7 Single Disc Drill 525.00

USED PLANTER SPECIALS

Tag 11650 John Deere 1250-6 Row Plateless \$2,350.00
 1460 John Deere 1240 Plateless 2,350.00
 1229 Ford 4 Row 775.00

USED HAYBINES

New Holland 479 \$2,750.00

USED TILLAGE SPECIALS

MF 620 12' Disc Harrow \$2,950.00
 Oliver Disc 9' 1,175.00
 John Deere KBA 28x20 Disc 1,050.00
 John Deere RW 12' Disc 925.00
 John Deere KBA 32x18 Wheel Carrier Disc 875.00
 John Deere KBA 28-18 Disc 850.00
 John Deere KBA 28-18 Disc 650.00

USED COMBINE SPECIALS

AC - C w/4 Row Corn Head 14' Platform \$6,750.00
 Cockshutt 427 w/Power Steering & 10' Platform 1,450.00
 AC Model E w/10' platform, pickup reel, 2 row corn head, real clean 5,750.00
 John Deere 55 Corn Soybean Special 12' head 9,700.00
 John Deere 55 Combine w/cab and 12' Platform 7,500.00
 235 Corn Head 1,000.00

MISCELLANEOUS

John Deere #18 1-row Corn Picker \$950.00
 New Set 18 4x30 Snap on Duals w/New Goodyear 6 Ply Tires 1,050.00

SPRING SPECIALS

1600 JD Pull Type Chisel Plow 8' w/new tires PRICE \$1,835.00 | 1700 JD Mulch Tiller 11' w/new tires PRICE \$4,395.00

Seed violation settled

NEW YORK, N.Y. - Whitney-Dickinson Seeds, Inc., Buffalo, N.Y., has paid \$750 to settle a case involving alleged violations of the Federal Seed Act. The act, administered by U.S. Department of Agriculture officials, is a truth-in-labeling law designed to protect farmers and consumers who buy seed.

Clyde R. Edwards, seed official with the Department's Agricultural Marketing Service (AMS), said the firm, in agreeing to the settlement, neither

admitted nor denied the charges.

The case involved two shipments of oat and rye seed to Maine and Pennsylvania in 1975 and 1977.

Alleged violations, while not the same for both shipments, were false labeling as to the percentage of pure seed and the germination test date; failure to label the presence of noxious-weed seeds; failure to test for germination within five months before interstate shipment; failure to label each variety present or to show "Varieties Not Stated;" and failure to keep required records.

Seed regulatory officials in Pennsylvania and Maine cooperated with officials of AMS in carrying out the investigation. The marketing agency administers the Federal Seed Act with the help of state seed agencies.

MEMO HAY, STRAW & EAR CORN SALE

EVERY MONDAY At 11 A.M.
 EVERY WEDNESDAY 12:00 NOON
 NEW HOLLAND SALES STABLES, INC.

Phone 717-354-4341
 Lloyd H. Kreider, Auct.

Second Choice
 "You're my second choice," the lady told the politician.
 "Thank you," he replied, "who's your first choice?"
 "Anybody else who's running!"

TRACTOR PULLS



NEWVILLE COMMUNITY FAIR GROUNDS

Newville-Shippensburg Road Rt. 533
 All Pulls Start - 7:00 P.M.

MAY 12 - GARDEN TRACTOR, MINI
 MAY 18 - MODIFIED STOCK, OPEN
 JUNE 2 - MODIFIED STOCK
 JUNE 9 - GARDEN TRACTOR, MINI
 JUNE 30 - MODIFIED STOCK

(State Sanctioned Pull)
 JULY 6 - MODIFIED STOCK, OPEN
 (State Sanctioned Pull)

JULY 7 - GARDEN TRACTOR, MINI
 JULY 14 - MODIFIED STOCK
 AUG. 4 - GARDEN TRACTOR, MINI
 AUG. 8 - MODIFIED STOCK

(Cumberland County Members only)
 AUG. 25 - MODIFIED STOCK

SHIPPENSBURG COMMUNITY FAIR GROUNDS

Take Fayette Street Exit off 81, go NE to Shippensburg, turn left at stop sign.

JUNE 23 - 7 P.M. MODIFIED STOCK, OPEN
 JULY 21 - 11 A.M. STOCK
 AUG. 17 - 7 P.M. MODIFIED STOCK, OPEN

Stock, Modified Stock - PTPA Rules (5 to 7 Classes)
 Open - NTPA Rules (5, 7, and 9 Classes)
 Mini - 1550 and 1750 Classes.

Guaranteed Cash Prizes and Trophies for All Pulls.

Admission \$2.50 Children Under 12 Free
 Sponsored by

CUMBERLAND VALLEY TRACTOR PULLERS

For further information
 Call 717-776-5280 or 717-532-7619



Evergreen Tractor Co. Inc.

30 EVERGREEN RD., LEBANON, PA 17042, PHONE (717) 272-4641