

Middle Atlantic milk order amended

WASHINGTON, D.C. — Effective May 1, milk producers now operating under the Middle Atlantic federal milk marketing order will be assured of continuing to share in the order's market "pool."

P.R. Smith, a U.S. Department of Agriculture assistant secretary, said the amended order was approved by 86 per cent of the farmers supplying the market. To determine approval, the Department's Agricultural Marketing Service polled dairy cooperatives. Changes were based on a public hearing last October in Philadelphia.

Pooling, Smith said, is a method where all dairy

farmers supplying the market share in the higher-valued Class I sales of the market and the lower-priced reserve milk that is used in manufactured dairy products. This is accomplished by combining the "class-use value" of all milk that handlers use and then paying all dairy farmers an average price, no matter how their own milk was used.

The amended order also reduces the pooling standards for both distributing plants and reserve processing plants and permits a federation of cooperative associations to operate a pool reserve

processing plant. It also increases the number of days' milk production of a producer that may be diverted to nonpool plants when it is not needed for fluid use at a distributing plant.

Copies of the final order are available from Market Administrator Joseph D. Shine, 300 N. Leo St., Rm. 320, Alexandria, Va. 22313; or from the Dairy Division, AMS, USDA, Washington, D.C. 20250.

Open doe show planned

NORTHUMBERLAND—The Susquehanna Valley Dairy Goat Association will sponsor their second annual "Dutch Treat" open doe show on August 12.

Sam Whiteside of Bristol, Vt., will judge the gala affair. Whiteside is licensed by the American Dairy Goat

Association to judge goats and has extensive experience breeding, showing and judging these animals.

Details of the show are not yet complete, but information can be obtained from SVGA Secretary Kim Brown, R.D.1, Box 415W, Northumberland, Pa., 17857.

Soil services come to Eastern Shore

DOVER, Del. — Twenty years ago, pH, nitrogen, phosphorus and potash levels in the soils were probably the limiting factors in crop production on the Eastern Shore. As farmers have become more progressive, these have virtually been eliminated as yield limiters. At today's higher yield levels there are new, more subtle, limiting factors. As the other sectors of the American economy have moved into the age of computers and specialization, so is farming and the information available to farmers. The private consultants are here.

It started in California. There, the universities do not have commercial soil testing labs. Private laboratories and consulting firms provide analytical services, make recommendations, scout for pests and trouble-shoot. These private organizations have formed a vital partnership with the farmers, county agents, dealers and university research teams, making California agriculture the most efficient and profitable in the world.

management, weed and insect scouting, irrigation management and scheduling and infared crop inspection. These firms excel by going into greater detail in terms of both the analysis of soils and tissues and in their recommendations of primary, secondary and trace nutrients, their amounts, placement and timing. They are more personal in terms of recognizing and dealing with the differences of each farm and make routine farm visits throughout the year.

For better farmers, it is not pH, N, P and K which have put a plateau on yields. It is the balances between nutrients and sometimes the amounts of minor elements. If a little is good; a lot is not always better (except in yields). If a coffee cup is filled with cream, there is no room for coffee. In the soils there are many mutually exclusive relationships between nutrients. Excess phosphorus can cause yield crippling deficiencies of zinc. High pH's can prohibit the uptake of all traces except molybdenum.

Private consultants have an impressive record of assisting farmers make substantial net profit gains through more scientific and detailed allocation of their fertilizer dollars.

Fees for these services range from \$1.50 to \$4.00 or \$5.00 per acre per year.

There are now several private consulting firms on the Eastern Shore. Some specialize in insect and weed scouting, some in fertility management; one firm offers a complete package including fertility

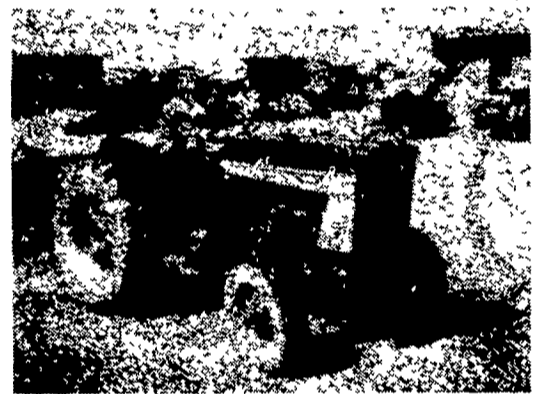
NOTICE



We have been selected to be a **John Deere Engine Distributor**. We will be stocking and distributing engines to be used as stationary power plants or as re-power applications in John Deere tractors, combines, and self-propelled equipment. Please call us for your power requirements.



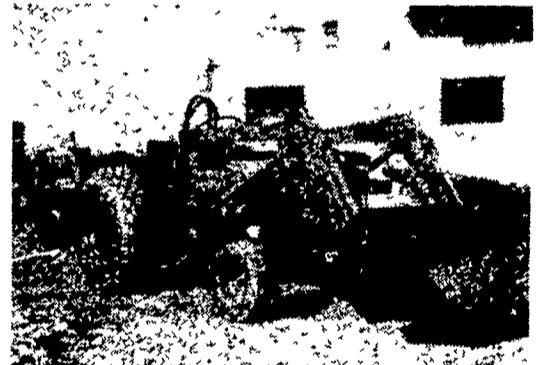
Ford 4-16" Plow **\$950.**



IHC 504 Gas Tractor **\$3,250.**



Brady 9 Tooth Chisel Plow **\$1,050.**



Used Kubota Tractor w/Loader Model L225, A-1 Condition **\$4,375.**

USED TRACTORS

John Deere 2020 Gas \$4,250.00
John Deere 50 Tractor 1,250.00

USED HARVESTER SPECIALS

NH 880 2-row narrow row head \$3,650.00
NH 717 Single Row Head, 9 Knife Cutter Bar 1,795.00
NH 717 w/1-row head 2,195.00
NH 717 1,175.00
John Deere #12 w/single Row Head 150.00

USED BALER SPECIALS

New Holland 67 Baler \$775.00
John Deere 14T 750.00
John Deere 14T w/ejector 450.00
John Deere 24T 950.00
John Deere 24T w/thrower 1,750.00
New Holland 275 w/thrower 2,350.00

USED GRAIN DRILLS

Co op 15x7 Fert Grain Drill w/grass seed attach \$750.00
John Deere 15x7 FBB Drill 550.00
Ontario 14x7 Single Disc Drill 525.00

USED HAYBINES

New Holland 479 \$2,750.00

USED PLANTER SPECIALS

Tag 11650 John Deere 1250-6 Row Plateless \$2,350.00
1229 Ford 4 Row 775.00

USED TILLAGE SPECIALS

MF 620 12' Disc Harrow \$2,950.00
Oliver Disc 9' 1,175.00
John Deere KBA 28x20 Disc 1,050.00
John Deere RW 12' Disc 925.00
John Deere KBA 32x18 Wheel Carrier Disc 875.00
John Deere KBA 28-18 Disk 850.00
John Deere KBA 28-18 Disc 650.00

USED COMBINE SPECIALS

AC - C w/4 Row Corn Head 14' Platform \$6,750.00
Cockshutt 427 w/Power Steering & 10' Platform 1,450.00
AC Model E w/10' platform, pickup reel, 2 row corn head, real clean \$5,750.00
John Deere 55 Corn Soybean Special 12' head 9,700.00
John Deere 55 Combine w/cab and 12' Platform 7,500.00
235 Corn Head 1,000.00

MISCELLANEOUS

John Deere #18 1-row Corn Picker \$950.00
New Set 18 4x30 Snap on Duals w/New Goodyear 6 Ply Tires 1,050.00

KUBOTA

DIG LIFT!



25-HP L245DT
with four wheel drive, and front loader/backhoe

- Front and rear PTO shafts
- Category 1 3-point hitch
- 3 cylinder diesel engine
- 8 forward speeds, 2 reverse

KUBOTA Tractor drive a Kubota diesel tractor now!

COPE & WEAVER CO.

New Providence, Pa. 17560 717-786-7351



Evergreen Tractor Co. Inc.

30 EVERGREEN RD., LEBANON, PA 17042, PHONE (717) 272-4641