

# SPRING TILLAGE DEMONSTRATION

AT OUR LOCATION

**WEDNESDAY, APRIL 18**

10:00 A.M. to 3:00 P.M.

★ **RAIN DATE:** ★ **REFRESHMENTS & DOOR PRIZES**  
**APRIL 19**

Representatives from Landoll, Leyland, Same and Taylor-Way Will Be Here To Answer Any Questions.

Plan to attend meeting conducted by:  
**DONALD SCHRIEFER**  
President, Advanced Ag Inc.  
Topic: SOIL MANAGEMENT  
**TUESDAY, APRIL 17 — 8 P.M.**  
AT OUR LOCATION  
★ REFRESHMENTS & DOOR PRIZES

## LEYLAND TRACTORS

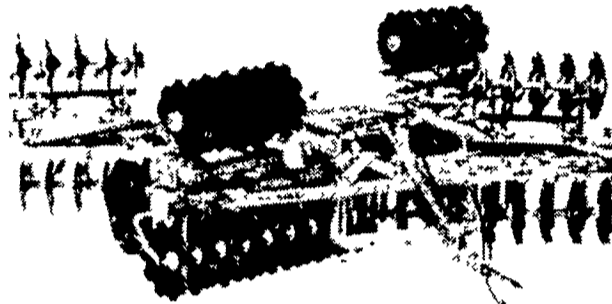


Features That Make The Difference...

- Ten Forward and Two Reverse Transmission Speeds.
- High Torque Engine at Low RPM.
- Bostrum Seat with Armrest, Backrest and Seatbelt.
- Prestressed Steel Main Frame (Model 262 and 272)
- Model 154D - 25 H.P.
- Modern Clean Design.

**LOOK AT LEYLAND THEN COMPARE . . . . IT'S WORTH IT!**

## Taylor-Way<sup>®</sup> HEAVY DUTY LEVELING OFFSET HARROWS



Fold over Wings for transporting or more weight per disc when plowing in tough soils.

### — FEATURES —

- Heavy Gang Frames constructed of 3/8" x 4" x 7" Rectangular Tubing
- Positive Angle Adjustment that stays put from 16° to 26°
- Eighteen Models available from 8'9" to 17'11" widths of cut
- Heavy-Duty Adjustable Scrapers are Standard Equipment
- Rugged Tongue adjusts laterally for various draft conditions and vertically for different drawbar heights
- Equipped with Shallow Concavity Discs on front for penetration and Deep Concavity Discs on rear for better leveling ability. Discs are tapered on both front and rear gangs, one disc tapered on front, three discs tapered on rear
- Regreaseable Ball Bearing
- Depth Gauge Bar holds constant cutting depth. Locks implement in transport position for easy transport
- Main Frame constructed of heavy wall tubing. Dual Main Frames are on 14' sizes and larger
- Split Gang Construction with more bearing eliminates axle stretch due to excessively long axles
- Flexible Bearing Hangers for rocky or rough ground
- 1 1/2" Square Axles

## SAME THE 4 WHEEL DRIVE



**OUR TRACTORS DON'T CLIMB WALLS . . . . . UNLESS THEY HAVE TO.**

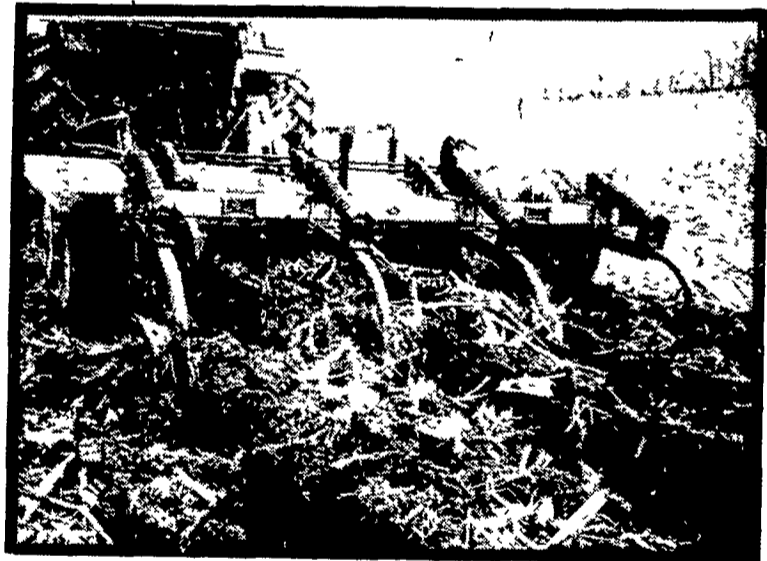
Your Profits Are Important To Us: We protect them with a 2 years or 3,000 hrs. guarantee.

### CHECK THESE ADVANTAGES:

- Air-cooled engines on all models. (Does not Freeze or Boil).
- Savings of up to .40% on fuel.
- Up to 40% less down time by eliminating water cooling.
- Four-wheel system is engineered in ... not an add-on. The heavy-duty transmission is designed for four-wheel drive.
- Long and low design for best weight distribution. More weight on front drive wheels where it can be used.
- SAME has constant 1% to 4% faster pull on front wheels.



## SOIL-MASTER<sup>®</sup>



**One trip through your field SAVES you TIME, MONEY and most important, your valuable SOIL!**

### CHECK THESE FEATURES:

- Unique 1 1/4" x 2" high clearance shanks. Choice of Torsion-Master or Spring-Master shanks. 15" spacing between shanks.
- Heavy-duty 93 1/2" frame depth. Combination yoke-block clevis and tongue jack. "Converta-Hitch" allows easy leveling adjustment.
- Hydraulic axles, 6 bolt hubs & rims for 11Lx15" floatation tires, transport safety-lock. 2 - 8" stroke cylinders with stroke control for precise depth setting.
- 20" dia. disc coulter blades slice stalks, leaves, stubble and root crowns into small bits, eliminates bunching and plugging.

# HEISEY FARM EQUIPMENT INC.

RD1, Jonestown, PA 17038

Phone: 717-865-4526

Located 1/2 mile south of Fredericksburg off Rt. 343

Business Hours: 7:00 A.M. - 5:00 P.M. Daily

Saturdays till Noon - Evenings by Appointment