

## Public Sales Register

WED. EVE APR. 18 - 7 P.M. Public Sale of Real Estate Located along Safe Harbor Road, RD 1 Millersville, Manor Twp, Lanc. Co., Pa (about 4 miles West of Millersville, take Letort Road to Safe Harbor Road; go past Masonville Mennonite Church; first lane past Brenneman Road on right). Sale by Eckert S. Erb Jr. Auctioneer - Howard Shaub.

WED. APR. 18 - 6 P.M. Public Sale of Groceries & Store merchandise. Held at Green Acre Dairy Farm Market, located 2 miles SW of Lititz, at Lititz take 772 W. to Green Acre Rd., 1 mile to Green Acre Dairy Store Terms by Luke Good Auctioneer Paul W Horst, Lamar Sensenig Apprentis

WED. APR 18 - 11 A.M. Milking Herd Dispersal selling 79 High Grade Holstein Cows on the Property of Richard F Price, Stockton Dairy Farm, Stockton Road, Phoenix, Maryland. Sale managed by The Merryman Company, Sparks, Md and A Doty Remsburg and Associates, Jefferson, MD

WED APR. 18 - 10:30 A.M. Public Sale of Tractors, Harvesting Equipment, Tillage and Planting Equipment, Trucks, Hogs, Hay and Corn located 10 miles east of Damascus, one mile east of Laytonsville, Rt 108 to Riggs Road Laytonsville, Montgomery Co., MD Sale by Austin L. Geisbert and Ruby M Geisbert, Owners, Dan Poole and Water Gordon, Auct

WED APR 18 - 9:30 A.M. Public Sale of Farm Machinery situated in Millcreek Twp., Leb

Co., Pa along Millbach Road, 1/2 mile North of Kleinfeltersville and Route 897. Sale by Louis K Ben-netch, Buffenmeyer and Bixler, Auctioneers

THURS. APR 19 - 12 P.M. Public Sale of Fine Dairy Cows, Melvin Kolb, Inc Monthly Holstein Cattle Auction. Located at the Maryland Farm 1/2 mile Northwest of Woodsboro, on Rt 550, Frederick Co. Sale Manager Melvin Kolb, Inc. Robert Mullendore, Auctioneer

THURS. APR 19 - 12 Noon Public Sale of Real Estate, Antiques, Household Goods, & Tools Located at 2674 Old Philadelphia Pike about 8 miles East of Lancaster along Rt 340, village of Bird-in-hand, East Lampeter Twp, Lancaster Co., Pa. Sale by Annie M Cooper Estate - American Bank & Trust Co., Executor Howard Shaub, Auctioneer & Roy C Probst

THURS & FRI APR. 19 & 20 - Horsts Machinery Sale at Marion, Pa Ralph Horst, Manager

THURS APR. 19 - 12 Noon Public Sale of Full line of Store and Warehouse equipment Held at Green Acre Dairy Farm Market, located 2 miles SW of Lititz, at Lititz take 772 W to Green Acre Rd., 1 mile to Green Acre Dairy Store, Terms by Luke Good. Auctioneer Paul W Horst, Lamar Sensenig Apprentis

THURS APR 19 - 12:30 P.M. 315th Special Guernsey Sale Located at the Guernsey Sales Pavilion, 6 miles East of Lancaster, Pa on Rt #30. Sale Managed by PA Guernsey

Breeders' Assn & The Merryman Company John B Merryman Auctioneer

THURS. APR 19 - 10 A.M. Auction of Farm Equipment Cattle, Household Goods and Antiques located in Lower Heidelberg Twps Berks Co., Pa Turn off Rt 422 in Wernersville at Balthaser Case Dealer onto N Church Road for 2 miles to farm on left Sale ordered by Ruth Conrad, Ralph W Zettlemoyer Auction Company, Auctioneers

THURS APR 19 - 1 P.M. Earl Smith Machinery Auction Located off Rt. 417 on County Rt. 21, 5 miles from Woodhull, NY; 5 miles from Jasper, 17 from Bath & 20 from Corning, NY. Watch for Auction arrows by the Woodhull Raceway sign Owners Earl & Grace Smith. Auctioneer Arlow Kiehl

THURS APR 19 - 1:00 & 7:00 Two Feeder Cattle Sales in One Day. 1:00 P.M. Culpeper Feeder Calf Assoc sells 1300 Feeder Calves and Yearlings at Culpeper Agricultural Enterprises, 3 miles South of Culpeper on Rt 29 7:00 P.M. Marshall Feeder Cattle Assoc sells 1200 Feeder Calves and Yearlings at Fauquier Livestock Exchange, 1 mile East of Marshall on Rt 55

FRI APR 20 - 6:30 P.M. Consignment Sale of Feeder Cattle & Feeder Pigs at Keister's Auction Sales, Inc Rt 522, 3 miles East of Middleburg, 5 miles West of Selinsgrove, Pa. Don & Walt Keister, Owners Larry Long, Auctioneer

FRI. & SAT APR. 20 & 21 - 9:30 A.M. Each Day Large 2 Day Public Sale Real Estate, Antiques, Woodworking Tools, Shop Tools, Car & Household Goods of the Late James H Hersey & Imo Edie Hersey now a resident of Seitz's Convalescent Home Located at 109 S Main St., Stewartstown, York

Co., Pa. Paul K Hersey, P O A Robert L Sechrist, Auctioneer

FRI. APR 20 - 10 A.M. Spring Feeder Calf and Yearling Sale, Held at the Farmers Livestock Exchange, Inc., Winchester, VA Northern VA Livestock, Inc

FRI APR 20 - 11:30 A.M. Complete Dispersal of Holstein Milking Herd located along Rt 272, 1/2 mile South of The Buck, 13 miles South of Lancaster Terms by Gerald and Linda Kreider; J Everett Kreider and Carl Diller, Auctioneers

FRI APR. 20 - 3 P.M. Public Auction of 8 Acre Farm, Farm Equipment, Butchering Equip and Household Goods located along Rt 863 between Fogelsville and Maxatawny, Lehigh Co. between Rt. 22 at Golden Key and Rt 222 Sale ordered by Frank Lutterschmidt Sale conducted by Ralph W Zettlemoyer Auction Co

FRI APR 20 - 7 P.M. Fifth Annual Maryland Simmental Association Free State Invitational Simmental Sale to be held at Frederick County Fairgrounds, Frederick, Md Merrill Anderson, Auctioneer

FRI APR 20 - 12 Noon Farm Machinery Auction. Located in Keiserville, Pa., Wyoming Co., 6 miles from Tunkhannock, 2 miles off Rt 6 below Fireplace Restaurant or 3 miles off Rt 29 at Lemon, Pa Watch for arrows Owner Mrs. Mary A Walters. Auctioneer Jerry Burke

**FEEDER SALE!**  
TUES., APRIL 17  
7:00 P.M.  
**CARLISLE**  
LIVESTOCK MARKET  
HAGERSTOWN, MD.

## PUBLIC AUCTION VALUABLE REAL ESTATE



**MONDAY, APRIL 30**  
1:30 P.M.

Located 1 1/2 miles So. East of Manheim, along Fruitville Pike in Penn Township, Lancaster Co., Pa.

Real Estate consists of 54 acre farm thereon erected a 5 bedroom stone & frame farm house with bath, kitchen, living room, dining room, and various storage areas. With-new oil fired hot water heat system. Also bank barn with barn cleaner, stalls for 46 cows, also various storage areas.

Note: Farm will be offered in two parcels. One parcel consists of 41 acres m/1 and all buildings. Second parcel consists of 13 acres m/1 farm land fronting on Lexington Road and Sego Sago Road. Also to be offered in the entirety.

Inspection any morning Monday through Friday til noon or by appointment 717-665-4808.

Sale by,  
**ELMER HESS**

**E M Murry, Assoc., Auct.**  
J. David Young, Atty.

*E.M. Murry Associates*  
BOX 383 Lititz RD6  
PA. 17543  
Elmer Murry 626-5244 - 626-2636  
Richard Murry 626-8175 - 949-2280  
Ken Miller 665-2073  
Professional Auctioneers,  
Appraisers, and Advisors  
Since 1953

## 29TH CENTRAL PENNA. SPRING CLASS SALE

**TUESDAY, APRIL 24**  
(12:00 Noon)

Reedsville, PA.

Sale held at the Reedsville Youth Park in Reedsville, in Mifflin Co. Pa. About 60 miles northwest of Harrisburg along Rte. 322. 6 miles northwest of Lewistown, Pa.

### 65 SELECTED HOLSTEINS SELLING !!!

(Young Cows - Bred Heifers - Open Heifers - Heifer Calves)  
All tested up to date - Ready for immediate interstate shipment

#### SOME OF THE EARLY ENTRIES!!

- A "VG" 4 yr. gr'dtr. of Astronaut with 854 F., 27,138 M. at 4 yrs. Dam a dtr. of Ivanhoe with 147,460 M. Lifetime. Due May 2 to Milu.
- VG-86" 3 yr. dtr. of Elevation with 19,403 M. 3.6% 702 Fat. Fresh again milking about 100-lbs. a day.
- "GP-82" VG Mammary 2 yr. dtr. of Elevation with 591 Fat, 13,826 M. 4.3% at 2y3. Dam with 935 fat., 4.8%. Just fresh.
- "EX" red young cow by Metcalfs Telstar Citation - Red with 17,830 M. 4.3% 758 fat, 3 yr.
- Elevation heifer due with first calf from dam with 23,346 M. 836 F. and "GP".
- "GP-83" Triune Needle with 18,702 M. 4.0% 741 Fat, 3y4. Due to astro Galaxy.
- Twin Elevation dauts. from a Kingpin dam with 14,619 M. 3.7% 548 F. at 3 yrs Due in July and Aug. to Commander.
- Kingstead Monty dtr due in June sells and out of "EX" dam with 18,289 M. 769 Fat
- 10 sell by Elevation - 5 by R. Maple - 4 by Astronaut - 2 by Gay Ideal - 2 by Milu Job, Needle, Ultimate, Transmitter, and others.

Sale starts Noon    Lunch Available    Catalogs    Under Cover

**CENTRAL PENNA. HOL. BREEDERS**  
Donald Q. Adams, Sale Chm.  
Port Royal, Pa. R.D. 2  
717-527-4608

R. Austin Backus Inc.  
Sale Mgrs. & Auctioneers  
Mexico, N.Y.

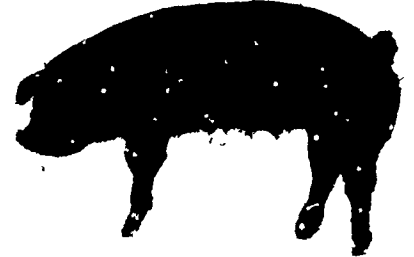
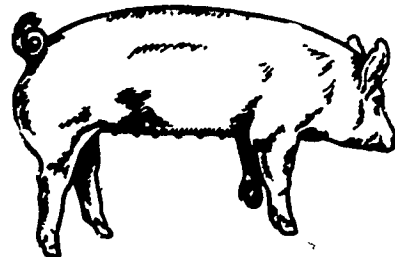
Lawrence, Leon and Thomas Arnold  
10th PRODUCTION

# SALE

OF

Yorkshires

Durocs



AUCTIONEER, Harry Bachman, Annville, Pa.

### 60 BRED GILTS 40 OPEN GILTS

Bred Gilts are hand mated. Select gilts with due dates to fill your farrowing schedule.

**35 BOARS**  
**20 Yorkshire**  
**15 Duroc**

Boars will be seven to eight months old. Very aggressive. Ready for heavy service.

**FRIDAY EVENING**  
**APRIL 27, 6:00 P.M.**

SALE TO BE HELD AT THE

**Lebanon Area Fairgrounds**  
(CORNWALL & EVERGREEN ROADS, 1 1/2 MILES SOUTH OF)

**Lebanon, Pa.**

FOR CATALOGUE WRITE TO  
LEON L. ARNOLD R.D.7, BOX 705, LEBANON, PA. 17402  
OR CALL 717-273-5880  
FREE LUNCH