

4-H club to form

MANHEIM — The Fruitville Pike, near Manheim. Any youth between the ages of eight and 19 in the area are invited to come to the meeting and select a project. Projects offered and their

leaders include: Jacob and Jane Fisher, rabbits; Jay and Kathy Fisher, pigs and indoor plants, Mervin Peifer, capons; Mary Lou Sauder, outdoor cooking and first year macrame; and David Miller, Jr., handyman. Other projects could be

offered if there is enough interest shown in them. For more information about the club, one can call David Miller, Jr at 717-665-6162

xxx
Of all farms, 39 per cent sold farm products worth more than \$10,000.

Lebanon County FFA

(Continued from Page 34)

in dairy project work. The State FFA Band award went to Patti Heilinger, while Irene Brown picked up a similar trophy for her achievements in the State FFA Chorus.

Scholarship pins were presented to Ronald Lehman, Troy Matthew, and Sue Ritchie. Officer pins were given to Ken Arnold, president; Sue Heilinger, vice president; Sue Ritchie, secretary; Brett Eberly, treasurer; Troy Matthew, reporter; Donald Arnold, sentinel; Dorothy Tice, parliamentarian; William Hoffman, chaplain; Ronald Lehman, historian; and John Kline student advisor.

The ELCO FFA Honorary Chapter Farmers for 1978-79 are Richard Levandusky and Jeff Schroyer, industrial arts teachers at ELCO High School; Mildred Schaeffer, ELCO School District cafeteria manager; and Lancaster Farming editor Dieter Krieg.

Toastmaster for the evening banquet, which was complete with flowers at every table, was ELCO FFA President Ken Arnold. Greetings from the State FFA Chapter were delivered by Sheryl Bollinger of Lititz who serves as secretary of the Pennsylvania FFA. Entertainment for the evening was provided by Mr. and Mrs. Carl Wenger who recently returned from a trip to communist China.

Farm Calendar

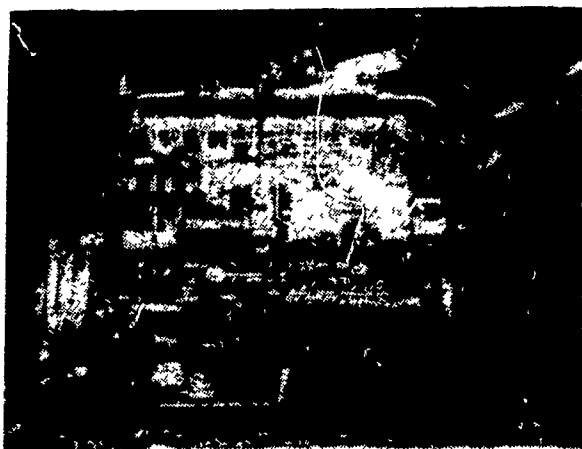
Today, April 7
Lehigh County FFA banquet, 6:30 p.m. at the Lehigh County Vo-Tech School, Schnecksville.

Tuesday, April 10
South Central Pennsylvania Cattlemen's Association annual meeting, 7 p.m. at East Berlin Fire Hall.

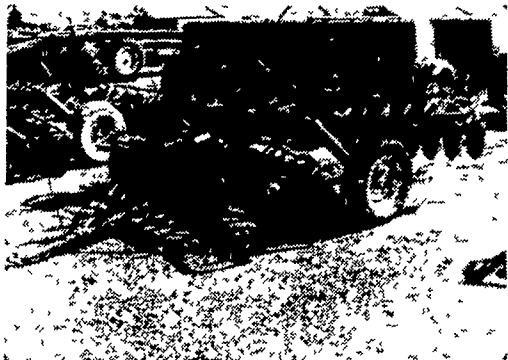
Ephrata Area Young Farmers Ladies Night, 6:30 p.m. at Cloister Restaurant.

Poultry Sales and Service Conference, today and tomorrow at the J.O. Keller Conference Center, Penn State University.

NOTICE



We have been selected to be a **John Deere Engine Distributor**. We will be stocking and distributing engines to be used as stationary power plants or as repower applications in John Deere tractors, combines, and self-propelled equipment. Please call us for your power requirements.



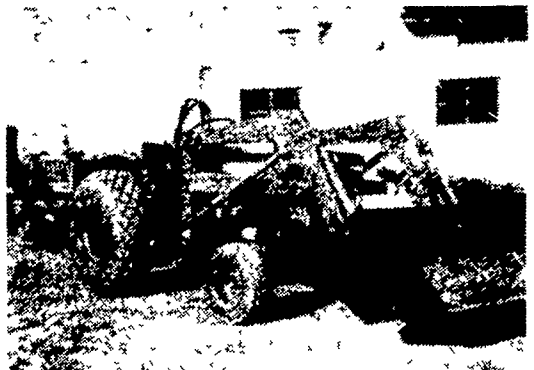
JD KBA 28x20 Disc. \$1,050.



JD 4400 Diesel Combine w/213 Flex Head & Auto. Header Height Control (500 Hrs. - Like NEW) \$29,750.



Brady 9 Tooth Chisel Plow \$1,050.



Used Kubota Tractor w/Loader Model L225, A-1 Condition \$4,375.

USED TRACTORS

JD 50 Tractor \$1,250.00
Int 3414 Tr (SOLD) Loader 3,750.00

USED HARVESTER SPECIALS

NH 880 2-row narrow row head \$3,650.00
NH 717 Single Row Head, 9 Knife Cutter Bar 1,795.00
NH 717 w/1-row head 2,195.00
NH 717 1,175.00
JD #12 w/single Row Head 150.00

USED BALER SPECIALS

New Holland 67 Baler \$775.00
John Deere 14T 750.00
John Deere 14T w/ejector 450.00
John Deere 24T 950.00
John Deere 24T w/thrower 1,750.00
New Holland 275 w/thrower 2,350.00

USED GRAIN DRILLS

Co-op 15x7 Fert Grain Drill w/grass seed attach \$750.00
MF 21x7 F(SOLD) Grain Drill 1,650.00

USED HAYBINES

(1)(2) New Holland 479 \$2,750.00

USED PLANTER SPECIALS

Tag 11650 John Deere 1250 6 Row Plateless \$2,350.00
1229 Ford 4 Row 775.00

USED TILLAGE SPECIALS

MF 620 12' Disc Harrow \$2,950.00
Oliver Disc 9' 1,050.00
John Deere KBA 28-18 Disk 850.00
John Deere KBA 28 18 Disk 650.00

USED COMBINE SPECIALS

AC - C w/4 Row Corn Head 14' Platform \$6,750.00
Cockshutt 427 w/Power Steering & 10' Platform 1,450.00
AC Model E w/10' platform, pickup reel, 2 row corn head, real clean 5,750.00
JD 55 Corn Soybean Special 12' head 9,700.00

MISCELLANEOUS

JD #18 1-row Corn Picker \$950.00
New Set 18 4x30 Snap on Duals w/New Goodyear 6 Ply Tires 1,050.00

SPECIAL
Suit-Case Weights
for John Deere Tractors
\$43.50 Each



Evergreen Tractor Co. Inc.

30 EVERGREEN RD., LEBANON, PA 17042, PHONE (717) 272-4641

SPECIAL of the WEEK

NEW WHITE 2-60 TRACTOR
\$9900.00 Straight Sale
SN #954673

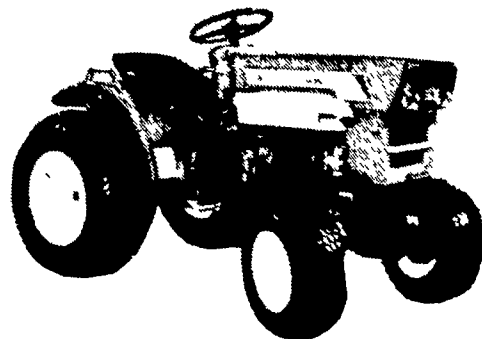
PAUL M. BYERS, INC.

1700 EDGAR AVE.
CHAMBERSBURG, PA.
717-263-8568

WHITE FARM & GARDEN
DEUTZ PAPEC
Wisconsin Engine Winco Generator

Here's the suburban-small farm tractor that does what you want it to do:

15 hp diesel SUZUE
(just call me Suzy!)



SUZUE 150
Diesel 4-wheel drive 1504WD
Diesel 2-wheel drive 1502WD

Reliable estate and farm power ... runs half a day on one tank of diesel fuel ... costs under \$2 a day to operate.

NORMAN H. ZIMMERMAN

Myerstown R.D. 2 Phone (717) 866-4695
1/2 mile west Myerstown - West Main St.

SHOP HOURS:

Mon & Fri 8 to 8 Sat - 8 to 12
Wed & Thurs 8 to 5 Tuesday Closed