

# Chester County DHIA

(Continued from Page 130)

J. Elmer Lapp B3	38.2	87.3	47.3	3.7	1.77
Harold J. Ranck 3	58.0	94.7	45.2	3.9	1.77

H. & R. Mason 3	115.6	92.5	45.4	3.9	1.76
Newton Evans, Jr. 3	82.8	89.0	47.5	3.7	1.76
Horace Prange B3	51.6	90.1	44.0	4.0	1.75
S. R. & M. J. Matthews B3	26.0	91.5	45.3	3.9	1.75
Wilmer L. Hostetter B3	41.9	79.1	40.3	4.3	1.74
Paul M. Snader B3	30.1	87.4	45.5	3.8	1.74
Harry Freese & Son B3	69.7	82.6	46.5	3.7	1.74
Merle J. King B3	75.4	79.5	45.4	3.8	1.74
J. Raymond Harnish B3	77.9	87.6	46.4	3.8	1.74
Quiet Valley Farm 8	47.8	94.8	43.7	4.0	1.73
H. R. & H. L. Brown B3	139.0	96.4	45.6	3.8	1.72
Ben S. Beiler B3	54.7	82.2	46.6	3.7	1.72
David K. Stoltzfus B3	40.1	86.9	49.5	3.5	1.72
Delphi Farms 3	99.4	83.2	45.3	3.8	1.71
Tom Halladay & Son B8	67.5	88.6	40.5	4.2	1.71
J. Kenneth Landis B3	53.5	84.0	42.1	4.0	1.70
Robert H. Herr B8	34.3	89.3	41.9	4.1	1.70
Walmore #3 B3	144.6	86.1	43.7	3.9	1.69
Earl Graybill B3	31.0	96.8	47.8	3.5	1.68
Kulp Bros. G3	83.0	84.3	42.7	3.9	1.68
Floyd Miller G3	52.5	84.8	42.7	3.9	1.68

## Lancaster Farming, Saturday, April 7, 1979-131

William E. Parry & Son G3	224.8	90.4	41.3	4.0	1.66
Simon Z. Zook B3	55.5	79.5	40.3	4.1	1.66
Richard Hostetter B3	83.7	91.5	43.5	3.8	1.66
Willowland Farm B3	59.1	84.9	43.3	3.8	1.65
Benjamin K. Kauffman 3	28.7	88.6	37.0	4.5	1.65
Landis S. Reid B3	60.7	85.9	44.0	3.7	1.64
Charles J. Moore B8	49.9	89.6	42.1	3.9	1.64
A. Richard Stauffer B3	28.9	90.5	43.7	3.7	1.63
Louis C. Neyman G8	35.7	85.4	38.5	4.2	1.63
Milton & Joyce Edwards G3	64.4	89.3	43.4	3.8	1.63
John E. Bruner B8	44.1	95.8	42.5	3.8	1.63
Edgar Miller B3	45.9	90.4	44.0	3.7	1.62
Wilkinson Farm #2 G3	61.7	92.9	42.1	3.8	1.62
Donald M. Horning G3	28.6	86.5	41.9	3.8	1.61
Charles H. Gable 1	51.1	91.2	37.1	4.3	1.61
Henry S. King B3	53.6	85.8	43.6	3.7	1.61
John R. Groff B3	49.9	86.4	39.7	4.1	1.61
Henry M. Hershey B8	59.1	92.1	38.7	4.1	1.60

(Turn to Page 132)

## TAX SHELTERED IRA PLANS AVAILABLE!



Call Us For Details!

Phone 215-267-3894

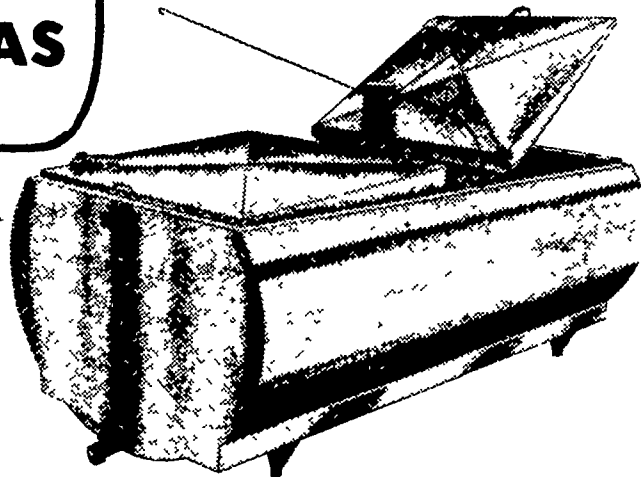
**BERNARD C. MORRISSEY**

Farm & Agri-Business  
Insurance Specialist

130 S. 4th St., Denver, PA 17517

AGWAY

**MAKE ME A  
BULK MILK  
COOLER THAT HAS  
EVERYTHING!**



## MUELLER Bulk Milk Coolers

THE MUELLER MODELS OH, MHL, AND  
MW WITH HIPERFORM MAKE ALL OTHER  
BULK MILK COOLERS OBSOLETE

SEE THE MUELLER NEW MODELS

★ 500 MW ★ 600 MW

The "MW" is one of the Lowest pouring Height Bulk tanks. Check with us all the new features of the "MW" bulk tank.

If you are in the market for a bulk milk cooler and you don't check all the advantages of the Mueller "OH", "MHL", and "MW" you may be buying an obsolete cooler.

### USED TANKS

375 gal. DeLaval  
2-500 gal. Milkcooper

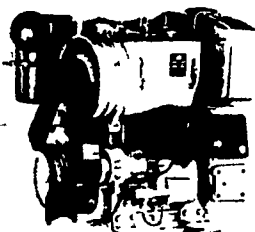
425 gal. Esco  
350 gal. Esco

300 gal. Girton  
400 gal. Dari-Kool

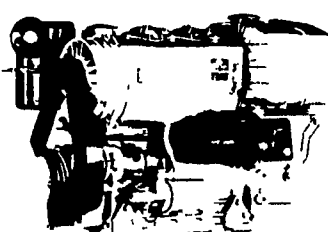
800 gal. Jamesway  
500 gal. Jamesway

2-400 gal. damaged tanks - cheap

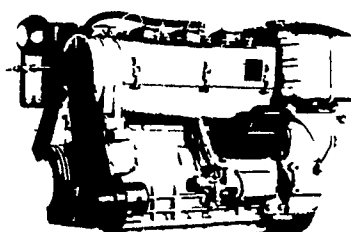
ASK US TO SEE A **MUELLER** **FRE HEATER** IN OPERATION, RIGHT ON THE FARM.



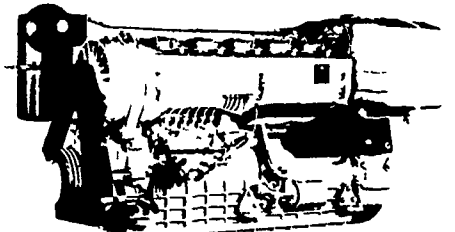
2800 R.P.M.  
44 SAE HP  
40 DIN HP



2800 R.P.M.  
66 SAE HP  
60 DIN HP



2800 R.P.M.  
88 SAE HP  
80 DIN HP

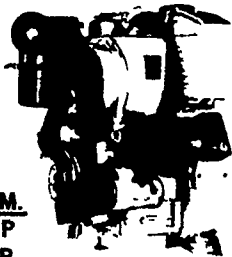


2800 R.P.M.  
132 SAE HP  
120 DIN HP



**1050 SU  
SERIES**

2800 R.P.M.  
22 SAE HP  
20 DIN HP



**FOR MORE  
INFORMATION  
ON HIGHER H.P.  
-- CALL US! --**

### USED DIESELS

- (4) SR2 Lister
- (4) DVA 1500 Sianzis
- 1 - ST2 Lister
- 1 - Cylinder Deutz

THE "RIGHT FROM THE START" DIESEL ENGINE LINE FOR FAULTLESS PERFORMANCE.

# QUEEN ROAD REFRIGERATION

Box 67, Intercourse, PA 17534

Phone: John D. Weaver - 717-768-9006 or 768-7111  
or Answering Service - 717-354-4374

**24 HOUR  
SERVICE**