

# Public Sales Register

SUN APR 29 - 9 A.M. - 4 P.M. Red Caboose Toy Train Railroadiana Show & Sale Located at Guernsey Sale Pavilion along Rt. 30 East of Lancaster. Buy - Sell - Trade or Browse. Dealer Tables For Sale. Gen. Admission \$2. Special antique toy train auction 1:30 p.m. Consignments welcome Ron Funk & Assoc. Auct & Manager 717-442-4279

MON. APR. 30 - 1:30 P.M. Public Auction of Valuable Real Estate located 1 1/2 miles East of Manheim, along Fruitville Pike in Penn Township, Lancaster Co., Pa. Sale by Elmer Hess, E. M. Murry Associates, Auctioneers, J. David Young, Atty

**MAY**

TUES MAY 1 - 7:00 P.M. Feeder Sale to be held at the Carlisle Livestock Market, P.O. Box 108, Hagerstown, MD 21740

TUES. EVE. MAY 1 - 7:00 Sharp Special Feeder Sales for your Cattle & Pigs To be held at Carlisle Livestock Market, Inc., P.O. Box 108 Hagerstown, MD

THURS MAY 3 - 12 Noon Monthly Cow Sale at the Melvin Kolb, Inc. Sales Barn, 2220 Dairy Road, Lancaster, Pa 17601 - Dennis Kolb, Sales Manager, Robert Mullendore, Auctioneer

FRI MAY 4 - 6 P.M. Heifer Sale at Keister's Middleburg Auction Sales, Inc Rt. 522, 3 miles East of Middleburg, 5 miles West of Selinsgrove, Pa Don & Walt Keister, Owners, Larry Long, Auctioneer

FRI MAY 4 - 7 P.M. Special Sale of Driving Horses, Draft Horses & Mules at New Holland Sales Stables, New Holland, Pa

FRI MAY 4 - 6:30 P.M. Special Heifer Sale to be held at the G & M Livestock Market, Duncansville, PA To consign call Sherman Glick, Lewistown (717) 248-0960 or Fred McCartney, Dry Run (717) 349-2393

FRI MAY 4 & SAT MAY 5 - 11 P.M. Nittany Antique Machinery Assn 2nd Annual Gas-Up Sale & Flea Market Consignments Welcome L.F. Harpster, Furnace, PA 16865 814-692-8738 or R. Dillion, Centre Hall, PA 814-364-9140

SAT MAY 5 - 10 A.M. Big Heifer Sale at Melvin Kolb, Inc Sales Barn, 2220 Dairy Road, Lancaster, Pa. 17601 Dennis Kolb, Sale Manager, Robert Mullendore, Auctioneer

SAT MAY 5 - Hubert Polled Charolais Ranch Production Sale - "The Best of Two Worlds" Located at the ranch, Richards, Missouri Managed by Buzz Garey, 100 Walnut Ln, Morrisville, Pa 19067

SAT MAY 5 - Show 3 P.M., Sale 7 P.M. PA Shorthorn Sale at Mercer 4-H Park, Mercer, PA Auctioneer Charles J. Behm

Petersheim Auctioneer, 215-869-2508

SAT. MAY 5 - 10 A.M. 8th Annual Mt. Zion Rd Church of the Brethern Consignment Sale

Located at Fredericksburg Firemens Park along Rt 343, 7 miles North of Lebanon, Pa Auctioneers Bachman, Meyers, Hoke, Rudy, Hoke & Reifine

## NI-CRETE FARMS MILKING HERD DISPERSAL

MONDAY, APRIL 9 1979

(11:00 A.M.)

CHAMBERSBURG, PA.

Ni-Crete Farm is located on the south edge of Chambersburg, Pa. Going south on Rte. 11, turn right on Industrial Drive, one mile to Hollywell Ave., turn left to farm. About 40 miles southwest of Harrisburg and 18 miles north of Hagerstown, Md.

### 160 REGISTERED HOLSTEINS

(135 Cows - 25 Bred Heifers - 5 Top-bred Youngsters)

All tested for immediate interstate shipment. Exam. for Preg.

JAN. 1979 DHIA — RHA 139.8 Cows 17,090 M. 3.7% 639 FAT!!  
FEB. 1979 HERD CLASSIFICATION — 7 "EX" - 41 "VG" - 81 "GP" - 10 "G"!!

### DAUGHTERS OF FAMOUS SIRES SELL!!

10 by Elevation - 12 by Complete - 12 by Astronaut - 9 by Ivanhoe Star - 6 by Apollo - 4 by Dividend Performer - 6 by Bootmaker - 7 by Capsule and others.

### TOP SERVICE SIRES USED!!

27 bred to Milestone - 14 bred to Pacemaker - 7 to Bootnik - 6 to Elevation - 5 to Milu - 5 to Glendell - 4 to Astronaut - 4 to Startrek - 3 to Bootmaker and others.

HERD HAS EVERYTHING — GOOD TYPE ★ PLENTY OF MILK ★ POPULAR SIRES!!

MAKE SURE YOU SEE THEM SELL ON APRIL 9 !!

R. AUSTIN BACKUS INC. Sale Managers & Auctioneers Mexico, N.Y

PENNA. HOL. ASSOC. 839 Benner Pike State College, Pa.

NI-CRETE FARMS T.K. Nitterhouse, Owner George W. Cashell, Mgr. Duane Comstock, Herdsman 717-364-2936 (Days) 264-8259 (Eve)

## Thank You — FOR MAKING OUR ANNUAL SPRING SALE A HUGE SUCCESS 40 TRACTORS SOLD AND 159 PIECES FARM EQUIPMENT

TRACTORS		NH Super 717		110 JD wagon	485
4330 JD	12,350	harvester	1500	Plow	480
MF 1105	9200	JD disc harrow	1480	468 cornplanter	480
MF 1100	7500	JD disc	1425	3 pt tank sprayer	480
MF 1100	5450	Manure spreader	1420	Oliver 4 bot plow	475
574 IH	5250	Sunflower chisel plow	1300	Oliver 2 bot plow	460
MF 1130	4350	IH 47 baler w/thrower	1300	Ford 3 bot plow	450
2020 JD	4350	AC haybine	1250	10 ft cultipacker	450
1550 Oliver	3975	Dunham cultmulcher	1250	4 B JD plow	440
MF 165 Diesel	3850	Gehl forage wagon	1200	NH 880 hay head	425
MF 165 Diesel	3475	JD 4-row planter	1200	11 ft cultipacker	410
2000 Ford loader	3400	Grain drill	1200	Gravity bin on gear	400
MF 165	3250	JD 24 T baler	1150	12 ft Brillion cult	400
1800 Oliver	3175	14' Bush Hog disc	1150	IH disc	400
138 Diesel	3025	NH spreader	1100	Fert drill	390
John Deere	3025	Oliver disc harrow	1075	JD 2 row corn head	380
MF 150	2750	Ni spreader	1060	Gable disc	370
165 MF	2075	JD disc harrow	1050	Disc	370
Farmall 130	1775	JD chopper	1050	AC haybine	360
JD 630	1625	268 NH bale thrower	1025	3 pt plow	360
Ferguson 40	1475	MF 5 bot plow	975	NH 3 row chisel plow	360
IH 300	1410	269 NH baler	960	MF 2 B roll-over plow	360
Cub Tractor	1225	Disc	950	Little Giant Ele	350
8 N Ford	1200	MF 5 bot plow	925	MF 6-row cornplanter	350
Farmall Super C	1200	Oliver disc harrow	900	IH baler	350
Case 500	950	44 corn head	900	Oliver mower 3 pt	350
Farmall M	875	Gehl 600 harvester	900	3 bot plow	350
Farmall H	800	10 tooth Brady chisel	890	NH spreader	350
200 Farmall w/cult.	775	IH chuck wagon	875	Disc	350
Farmall M	700	Staufer forage wagon	850	3 pt JD cornplanter	350
88 Oliver diesel	675	IH 6 row planter	850	2-row IH cornplanter	340
Farmall H	560	MF 12 baler	830	11 ft Dunham cult	340
Farmall H	550	Disc	825	JD disc	335
Minneapolis Moline	525	Swartz spreader	825	246 JD 2-row planter	330
77 Oliver	525	Ontario drill	825	Corn planter	325
Silver King	475	Oliver disc	820	AC 720 harvester	325
JD B Tractor	390	NH 27 blower	800	Ford 309 planter	320
88 Oliver	385	Liquid spreader	800	JD 3 bot plow	320
77 Oliver Gas	300	461 NH haybine	800	MF 3 bot plow	305
66 Oliver	300	JD 4 row planter	800	Rotary mower	300
Massey Ferguson	270	IH hay rake	775	Chuck wagon body	300
		JD 494A planter	750	Lilston cultivator	300
		Silage wagon	725	Disc harrow	300
		Hay tedder	720	Cultmulcher	300
		New Idea rake	700	Sauder loader hi lift	295
		Forage wagon	700	Ford 3 bot plow	290
		Implement trailer	650	IH 3 pt hay rake	285
		MH 92 combine	640	35 IH spreader	280
		MF cornplanter	640	NH spreader	280
		NH spreader	640	4-row cornplanter	250
		Chuck wagon	630	4-row JD cornplanter	250
		Oliver disc	625	2 bot plow	245
		JD haybine	625	Elevator	240
		NH 717 harvester	610	Stream Jenny	240
		NH spreader	600	MF 74 3 bot plow	240
		3 pt Oliver plow	600	JD 494 - 4 row planter	230
		MF 205 spreader	600	Hay rake	225
		694 JD cornplanter	590	Steel wheels	220
		JD blower	575	JD disc	220
		68 NH baler	540	Cultipacker	220
		JD 3 bot plow	530	Spring harrow	220
		MF grass mower	530	Lawn rake	210
		MF 6-row cultivator	520	Case 28 disc transport	210
		Field sprayer	510	Sauder loader hi lift	210
		241 Oliver disc	510	NH 510 spreader	210
		Ford haybine	500	MF baler	210
		Farmhand rake	500	Cultipacker	200
		Hay wagon	500	Ford cornplanter	200
		MF loader	500		

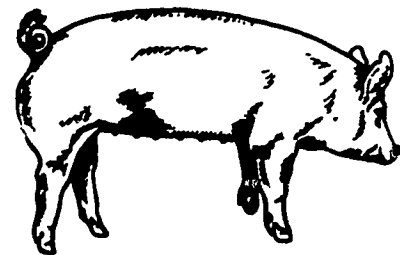
## M.M. WEAVER & SONS

North Groffdale Rd. Leola, PA  
Phone:(717) 656-2321

# BRED GILT SALE SATURDAY, APRIL 7, 1979

1:30 P.M.

Located 8 miles North of Myerstown on Rt. 501 & 1 mile South of U.S. 22 on Rt. 501 at Bethel, Pa. Turn West at Bethel School to second farm on left.



60 to 70 bred gilts, famous 3 way cross, Yorkshire, Hampshire & Duroc. Also 6 purebred duroc boars weighing from 300 to 400 lbs. out of Ricky Pfautz's herd. Gilts are bred to purebred Yorkshire out of Ivy Hill Farms, Smithburg, MD. Pigs were vaccinated for Erysipelas, wormed & treated for lice. No odd side hogs will be sold at this sale, they are all home raised.

Sale Conditioned by HENRY H. MARTIN 717-933-4279

Auctioneer Alvin Horning