

## J I Case Needs a Few New Dealers

We are looking for enterprising businessmen who understand agricultural equipment retailing. "We" being the J I Case Company. Founded in 1842, Case now has over 3,000 dealers world-wide and an unsurpassed reputation for product quality, reliability and current growth.

If you think that the farm equipment business requires involvement with many different product lines, you'll find Case an interesting exception. As a Case Tractor Specialist, you concentrate on *one major product line*, agricultural tractors and related tillage tools, because Case builds nothing but tractors for the farm market.

Case Dealers sell twelve basic tractors, 43 to 300 horsepower. Five models are under 90 horsepower, four are the exciting new 90 series - 108 to 180 horsepower, and our three big four-wheel drive tractors lead the booming 4WD market.

High potential marketing areas are available now. Profitable Case light construction and outdoor power equipment contracts may also be available. As a Case Tractor Specialist, you would benefit from liberal financing policies, attractive consumer terms and time-proven Case Rental Systems.

Case product and policy advantages, when combined with your own aggressive sales and management abilities, will afford you the opportunity to realize an excellent return on your investment.

Are you interested? Please contact **W.M. KIMBROUGH**, Dealer Development Manager, J I Case Company, P.O. Box 50128, Indianapolis, Indiana 46256, or call collect (317) 849-4770.

J I Case  
A Tenneco Company



## FISHER ENGINE SERVICE

3141 Old Phila. Pike 717-768-3729 Bird-in-Hand, PA 17505

### AUTHORIZED SERVICE CENTER

#### WISCONSIN

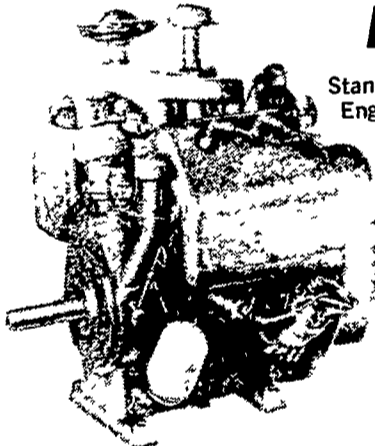


Industrial  
Gas & Diesel  
Engines



#### WISCONSIN HEAVY-DUTY ENGINES

### MODEL VH4D



Standard  
Engine

30 HP • 107.7 cu. in.  
V-Type • L-Head  
Rugged Dependable  
Wisconsin Power —  
Tops in Performance

SPECIAL DISCOUNT ON FACTORY SURPLUS ENGINES.

#### MODEL VH4D

Bore	3 3/4"
Stroke	3 3/4"
Piston Displacement - cu. in.	107.7
Horsepower - 1400 R P M	17.2
1600 R P M	20
1800 R P M	22.5
2000 R P M	24.7
2200 R P M	26.5
2400 R P M	28
2600 R P M	29.2
2800 R P M	30



#### AVAILABLE WITH:

- ★ 12 Volt, 37 amp., belt-driven alternator. (shown)
- ★ Engine-mounted live hydraulic pump.
- ★ Crank-start.
- ★ PTO Clutch-reduction.

**ENGINES IN STOCK  
TO FIT  
VARIOUS  
APPLICATIONS**

Haybines, balers, compressors and skid-steer loaders including Mustang, Case, Bobcat, N.H., IHC, Ford and others.

#### USED ENGINES

Wisconsin 1, 2 & 4 cylinder  
Allis Chalmers B125 & D14  
Ford 172 52 hp w/reduction

New - Kirloskar 3 cyl., 43 hp Diesel	\$2095
New - Avco 4 cyl., 40 hp Diesel w/clutch	\$1695
New - Hatz 8 hp. Diesel w/clutch	\$875
New - Hatz 36 hp Diesel w/clutch reduction	\$2350

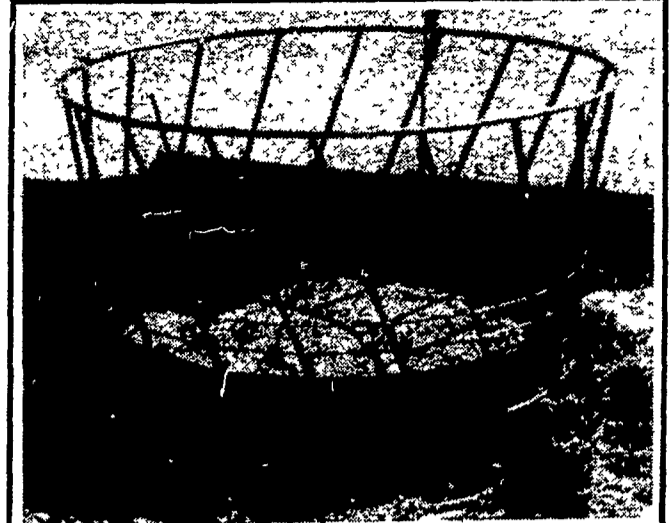
#### FARM EQUIPMENT

USED TRACTORS  
1974 Ford Diesels  
1974 w/loader  
JD 4320  
JD 4020 Dsl Power  
Shift  
JD 1520  
JD 1020 w/loader  
Ford 881 w/loader  
Case VAC  
Balarus 520 Diesel

USED EQUIPMENT  
4, 5, & 6 B semi-mtd.  
plows  
Cockshutt 30  
Chisel Plows in Stock

NEW FERTILIZER  
SPREADER  
List \$1795.00  
SPECIAL \$1350.00

SAYLER'S FARM  
SERVICE  
Garrett, PA 15542  
814-634-5034



**ROUND STEEL HAY RACKS**  
(For 18 Head)

**ELAM S. ZOOK**

RD #3, BOX 378, RTE. 896,  
QUARRYVILLE, PA. 17566  
1/2 Mile North of Nine Points.

## ZOOK'S FARM STORE

R.D. #2, HONEY BROOK

1 mile West of Honey Brook on Rt. 322 then North on Reservoir Rd.

**NEW AVAILABLE BY MARCH 31st -- GROUND DRIVE  
MANURE SPREADERS FOR ELEVATOR TYPE PIT MANURE**



NEW Tomato and Tobacco  
Planters \$496<sup>00</sup>

#### SPRING SPECIAL PRICES ON

GLENCOE, LANDOLL AND  
TAYLORWAY  
DISK HARROWS  
CHISEL PLOWS  
SOIL SAVERS  
FIELD CULTIVATORS

#### MCCHOPPERS

ROTARY SCYTHES

COLE CORN PLANTERS

HAY RAKES

WISCONSIN ENGINES

LINCOLN WELDERS

AIR COMPRESSORS

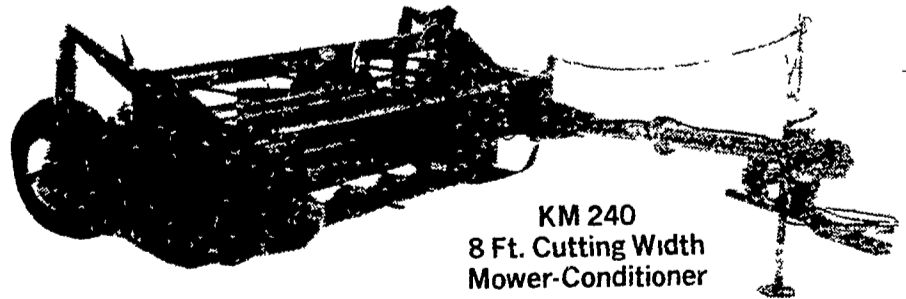


217 BU KASTEN MANURE SPREADER  
3 Speed Plus Cleanout  
Corrosion Resistant Corten Body

#### NEW McCONNEL SPRING TOOTH HARROWS

8 Ft. — \$416<sup>00</sup>  
10 Ft. — \$527<sup>00</sup>  
12 Ft. — \$569<sup>00</sup>

Replaceable Runners  
and Points



KM 240  
8 Ft. Cutting Width  
Mower-Conditioner

## COME ATTEND OUR VICON OPEN HOUSE TUESDAY APRIL 3

For Prices, Information and Service Instructions  
Our Indoor Display Will Show

KM240 Mower Conditioner  
CM240 Mowers  
PS500 & PS600 Fertilizer Spreaders  
H-1240 V-Rake-Tedder Combination  
HKX620 Acrobat Rake-Tedder Combination  
H820 Atleet Rake-Tedder Combination