

Congressman Walker backs farm preservation

Stauffer Homestead gets conservation award

By SALLY BAIR
Staff Correspondent

SMOKETOWN — The Stauffer Homestead at Goodville near the headwaters of the Conestoga River, was named the 1979 Outstanding Cooperator at the 28th annual meeting of the Lancaster County Conservation District held at Good and Plenty Restaurant last Friday.

The Homestead owned by Mr. and Mrs. John Miller, East Earl R2, has been in the Stauffer family since 1732 when it was deeded to Mathias Stauffer by Thomas and Richard Penn. Mrs. Miller is a direct descendant.

The Millers were awarded an aerial photograph of the 240-acre farm.

The Homestead became a cooperator with the District in 1963, when its first conservation practice was to

string electric fence to keep livestock from the Conestoga. Since then they have added 3,850 feet of sod waterways, 925 feet of diversion terraces and 24,000 feet of cropland terraces.

The farm has been managed by Earl and Bill Fisher since 1945. Beef breeding has been carried out on the farm since 1830, and since 1960 they have had purebred and percentage Charolais stock. They also have 120 sows and 39 Suffolk sheep.

In presenting the award, Conservation District Administrator Thomas Johnston, cited the farm for its cooperation with local 4-H and FFA groups who have been welcomed on field trips.

Miller thanked the Conservation District staff and

the staff of the Agricultural Stabilization and Conservation Service which cost-shared the program. He also thanked Titus Musser, the land contractor who was responsible for terraces and the sod waterways.

A storm water management award was presented to the developers, landscape architects and West Lampeter Township personnel for the Pioneer Woods development on Lampeter Road. Commissioner Raymond G. Herr who presented the award said the cluster development made possible more open space for water runoff and recreation.

The development is owned by Clabell Associates, with John Denlinger and Clyde Horst accepting the award on behalf of the five part-



Tom Johnson, left, Conservation District administrator, presents an aerial photograph of the Stauffer Homestead to Mr. and Mrs. John Miller and one of their two sons, Keith.

ners. McCloud, Scatchard, Derck and Edson was the architectural firm responsible for the development. Bob Derck and Will Burkhart accepted for the architects. Jere Schuler, supervisor, and Imo Sulyok, chairman of the planning commission, accepted the citation awarded to the Township.

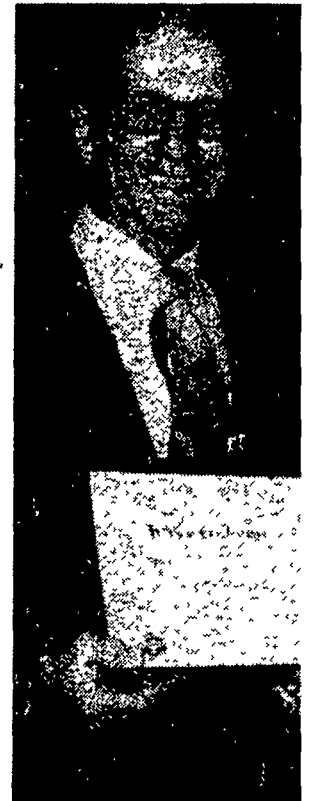
Service awards were presented to Mary Catherine Byrd, for completing 30

years of work at the ASCS office. Snavelly Garber received a certificate for serving 18 years as a committee person for ASCS. It was noted that Garber's uncle was awarded the first Master Farmer award in the state in 1927 and Garber received the award in 1955. Steve Huber was recognized for his 2½ years in the District's office. He is now with the Lancaster County Planning Commission.

Guest speaker Congressman Robert S. Walker told those attending the meeting that in the next 15 years the "number one problem in this country will be the contamination of drinking water. It is an emerging problem and is becoming more severe. We need to address it."

He said runoff, caused by paving over large areas of farmland for development,

Long
of service



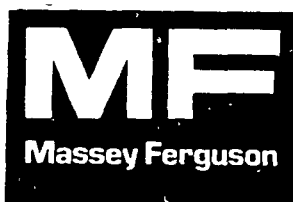
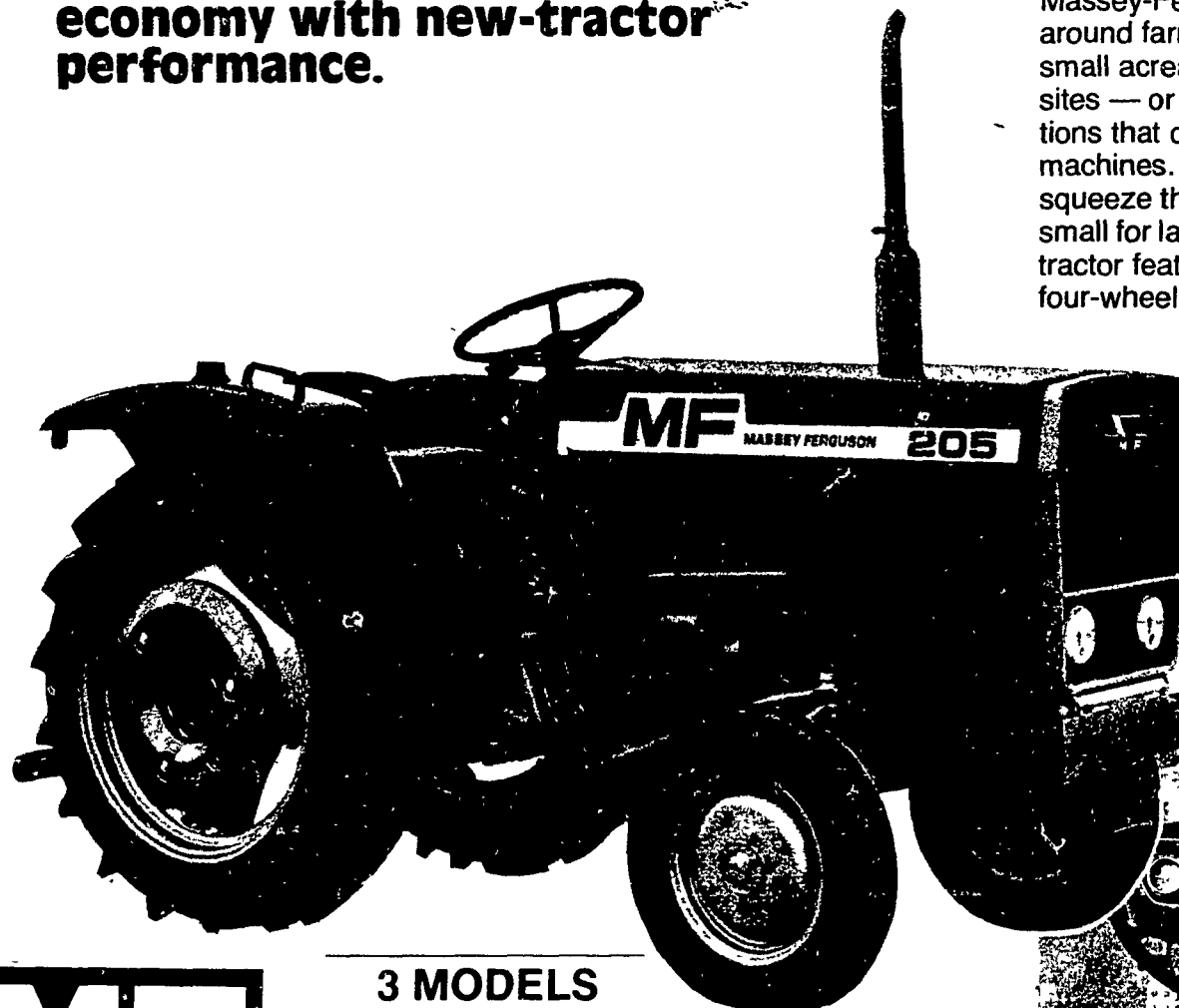
Snavelly Garber, left, was recognized by the Conservation District for

his work. Walker placed himself strongly behind farmland preservation, congratulating Lancaster County's effort in that area. He said we must stop paving over farmland, adding that there is serious concern in Washington about loss of farmland. "We know th

is a large part of the problem, causing loss of topsoil and picking up pollutants and carrying them into the streams.

New 2 and 4-wheel drive compacts with big-tractor performance

Six all-new models offer old-tractor economy with new-tractor performance.



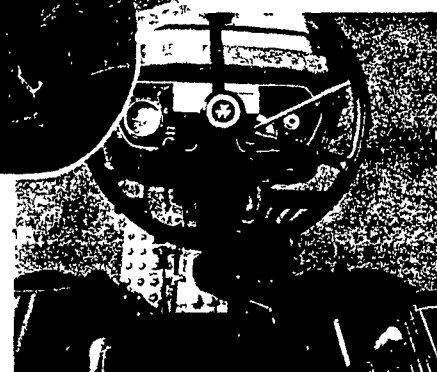
3 MODELS
2-wheel drive

MF205—16 pto hp*
MF 210—21 pto hp*
MF220—26 pto hp*

These lively compacts from Massey-Ferguson can scoot around farmyards, large and small acreages, construction sites — or numerous other locations that call for smaller machines. Their size lets them squeeze through spaces too small for larger tractors. New big tractor features like two- and four-wheel drive make them far more efficient and adaptable than older tractors in the same horsepower range.

Diesel power and economy.

The economical diesel-powered 16 PTO hp*



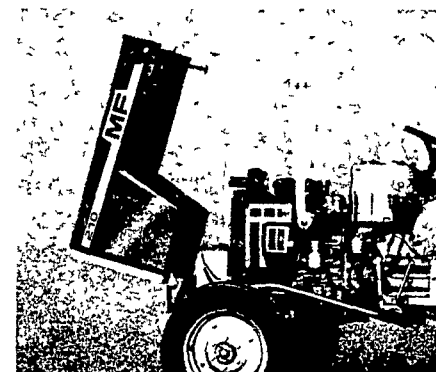
Hand and foot throttle and differential lock are standard. 210 and 220 have a water temp. gauge.

MF 205, 21 PTO hp* MF 210 and 26 PTO hp* MF 220 hold maintenance and fuel costs to an absolute minimum. Yet their high cubic inch displacement per horsepower provides the kind of lugging power you need.

A 12-speed transmission — four forward speeds in 3-speed ranges — is standard on the 210 and 220. A 6-speed transmission is standard on the MF 205 — three speeds forward in two speed ranges.

There's a 540 rpm rear PTO with overrunning clutch on all three tractors — giving you power to run a variety of attachments. A built-in safety start is standard.

Rear wheels are adjustable on all models, giving you variable tread settings for working in

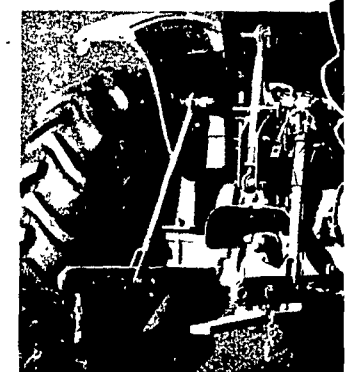


Engine hood tilts forward for easy access to engine and battery.

all crops — or especially spaces. You can add wheel weights for more balanced traction, and front weight for 25 lb. suitcase weight available.

3-Point linkage and position control

Category I 3-point linkage designed to handle a variety of implements with ease. Big capacity hydraulic pump provides excellent response. Position control is standard on all models. Draft control is also featured on MF 220 models.



Three-point hitch offers position control. Draft control (shown) standard on MF 220.

Personalized MF financing plans, and service

S. G. LEWIS AND SON
West Grove, PA
Ph: (215) 869-9440
869-2214

REX RUSSEL EQUIPMENT
Rome, PA
Ph: (717) 247-7858
2 mi. N. Rome off Rt. 187

PETERMAN FARM EQUIPMENT
225 York Road
Carlisle, PA
Ph: (717) 249-5338

PAUL J. EICHERT & SON
RD 1,
Orwigsburg, PA
Ph: (717) 943-2304

ARNETT'S GARAGE
Rt. 9 Box 125
Hagerstown, MD
Ph: (301) 733-0515

MARLIN W. SCHREFFLER
Pitman, PA
Ph: (717) 648-1121

N. H. FLICKER & SON
Maxatawny, PA
Ph: (215) 683-7211