

Machinery exposition

(Continued from Page 35)

for sales in our pockets," he said.

Brecht mentioned that he was surprised to have people come in from as far away as Canada.

"The people who came wanted to talk business," said Russell Darkes Jr. of Penn-Jersey Harvstore, New Holland. "We have a nice stack of registration cards ... good interest." Agreeing with him strongly was Charles Werner of Pennsylvania Harvstore Systems, Dillsburg. "It was almost perfect in every respect. We had a nice flow of people and the registrations were as good as at the Farm Show. I'd really like to see'em keep it going," he exclaimed. The fact that the exhibit hall wasn't crowded was beneficial, he added.

Some of the exhibitors had suggestions for improvements - such as combining a livestock or dairy show with it. Some thought the show could have been better organized. For example, there was nothing going on in some portions of the Farm Show Complex, and people who were at one end didn't know that activities were taking place elsewhere because of the

"nothingness" between the two areas.

Cliff Halloway, a Lancaster County dairyman and dealer for Vermeer Manufacturing Company, said he got a lot of leads at the Expo, despite the small attendance figures. "I would come back, I'd like to support it," he said. "Having it for just one year wouldn't be a fair trial," commented his son, Jim.

Over at the NAPA display, a spokesman was delighted at the new ground he was breaking with the farm population. Noting that NAPA has a vast variety of products for farmers, he said people were astounded to find this out. "Everybody just thinks NAPA is auto parts, but it's not," he said. On display were an assortment of goods ranging from electric fences to boots and shovels to tools.

"We feel we got our money's worth because of the exposure. Farmers didn't know we had agricultural parts and implements. We definitely plan on coming back," said Ray Buckno of the Timker Bearing Company, which participated in the NAPA display.

**GROW THE CORN THAT
WILL GIVE YOU PROFIT
MAKE YOU PROUD
STEWART SX 77**

ASK THE PEOPLE WHO DID,
Like JOHN PEOPLES, Rising Sun, MD.

**THE TOP YIELD
HEALTHY STALKS
GRAIN OR SILAGE
STEWART SX 77**

THE HYBRID YOU CAN COUNT ON

PROVEN BY TWO YEARS OF USE
BY CECIL COUNTY FARMERS.

Call PAUL ZACHARY, 658-5605
or WARREN KNUTSEN, 658-4283
Rising Sun, Md.

**We Won't
Bully You
Around...**



When You Have
Beef Butchered

**WE CUSTOM BUTCHER
BEEF, PORK,
VEAL & LAMB**

We just want to offer you the best
quality, friendliest service and most
convenient location possible, to have
your butchering done

Butchering done
by appointment only

Also available - Freezer Meats - Any quantity
Call 653-4087 or 653-1495

**STONEBRIDGE FARM
Butcher Shop and Retail Store**

1/4 mile south of Mount Joy on Pinkerton Road
off Marietta Ave.

NOTICE



We have been selected to be a John Deere Engine Distributor. We will be stocking and distributing engines to be used as stationary power plants or as repower applications in John Deere tractors, combines, and self-propelled equipment. Please call us for your power requirements.



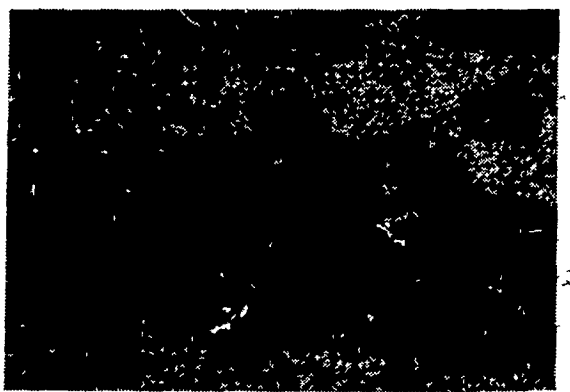
International 3414 Tractor &
Loader **\$3,750.**



JD 4400 Diesel Combine w/213 Flex Head
& Auto. Header Height
Control (500 Hrs. -
Like NEW) **\$29,750.**



Ford 4-18" Semi-Mount Spring
Reset Plow **\$2,450.**



Used Kubota Tractor w/Loader
Model L225, A-1
Condition **\$4,375.**

USED TRACTORS

MF 175 Die \$5,850.00

USED HARVESTER SPECIALS

NH 880 2-row narrow row head \$3,650.00
NH 717 Single Row Head,
9 Knife Cutter Bar 1,795.00
JD #12 w/single Row Head 150.00

USED BALER SPECIALS

New Holland 67 Baler \$775.00
John Deere 14T 750.00
John Deere 14T w/ejector 450.00
John Deere 24T 950.00
John Deere 24T w/thrower 1,750.00
New Holland 275 w/thrower 2,350.00

USED GRAIN DRILLS

John Deere 17 x 7 \$750.00
Co-op 15x7 Fert Grain Drill w/grass seed attach 750.00
MF 21x7 Plain 1,650.00

USED HAYBINES

(2) New Holland 479 ea. \$2,750.00

USED PLANTER SPECIALS

Tag 11650 John Deere 1250-
6 Row Plateless \$2,350.00
1229 Ford 4 Row 775.00

USED TILLAGE SPECIALS

Brady 9 tooth chisel plow \$1,050.00
Oliver Disc 9' 1,050.00
MF 720 Disc (28 Blade) 26" Blades
w/hydraulic cyl 3,950.00
John Deere KBA 12' Wheel Carrier Disk 650.00
John Deere KBA 28-18 Disk 850.00

USED COMBINE SPECIALS

AC - C,w/4 Row Corn Head 14' Platform \$6,750.00
Cockshutt 427 w/Power Steering & 10' Platform 1,450.00
MF 410 Diesel w/cab, 13' platform,
3 row N R corn head 8,250.00
AC Model E w/10' platform, pickup reel,
2 row corn head, real clean 5,750.00
JD 55 Corn Soybean Special 12' head 9,700.00

MISCELLANEOUS

JD #18 1-row Corn Picker \$950.00
New Set 18.4x30 Snap on Duals w/New
Goodyear 6 Ply Tires 1,050.00



Evergreen Tractor Co. Inc.

30 EVERGREEN RD., LEBANON, PA 17042, PHONE (717) 272-4641