

Livestock market and auction news

Thomasville Market

Thomasville, Pa.
Wednesday, March 14
Cattle, 164 head. Steers, high choice and prime 72.00-73.00; choice 67.00-79.00; good 64.00-66.00; Holstein steers 63.00-65.50; high choice and prime heifers 69.00-70.35; choice 65.00-67.50; good 60.00-64.00; cows, utility and commercial slaughter cows 54.00-55.50; cutters 49.00-52.00; canners and low cutters 46.00-48.00; yield grade 2 bulls 62.25-64.25; calves, 33 head; vealers, choice 120.00-129.00; good 100.00-110.00; standard and good 90 to 110 lbs. 90.00-105.00; 85 to 90 lbs. 85.00-90.00; Holstein bull calves, 95 to 110 lbs. 98.00-115.00; hogs, 277 head; US 1 to 3, 200 to 239 lbs., by private treaty 48.50; sows U.S. 1-3 43.00-45.00, few 50.00-53.00; feeder pigs US 1-3 20-35 lbs. 39.50-41.00.

Valley Livestock

Valley Stockyards
Athens, Pa.
Monday, March 12
Reported receipts of 597 calves, 135 cows, 73 hogs, 13 heifers, 13 sheep, 3 lambs, 14 bulls, and 3 steers. Cattle market strong and calf market high.
Holstein heifer calves to 170.00; veals 84.00-120.00; bobs, 90 to 110 lbs. 96.00-120.00; bobs, 80 lbs. and down 65.00-92.00; grassers

and feeders 71.00-84.00; lambs, 49.00-70.00; sheep 30.00-48.00; hogs, 200 to 250 lbs. 55.50-58.50; sows 44.50-46.00; boars 32.00-35.00; pigs 27.00-65.00; heifers 59.00-79.00; steers, good 63.00-77.00; bulls 57.00-68.50; cows, good 52.00-56.25, cows, medium 48.00-52.00; cows, poor or small 33.00-40.50; horses, ponies none; goats 9.00-45.00.

New Holland Dairy

New Holland Sales Stables
Wednesday, March 14
Reported receipts of 81 cows, 84 heifers, and 4 bulls. Market steady with last week's market.
Load of Pa. fresh 490-980, load of Pa. fresh 875-1485; load of N.Y., fresh 1125-1500; load of Butler Co., fresh 690-1375, springers 850-1470; Local Springing heifers, grades 750-1000 purebreds 900-1200; local cows 750-1625; bulls 485-530; Open Heifers 380-590; Small herd dispersal in all stages of lactation 470-1090.

Lancaster Feeder Cattle

Lancaster, Pa.
Fri., March 9, 1979
Feeder Cattle
Today 297
Last Friday 160
Last Year 241
TREND: Trend not fully tested, few lots mixed Good

and Choice feeder steers fully steady. Bulk of supply sold in lots of three or less in a clean-up trade.

FEEDER STEERS: Couple small lots Choice 440-580 lbs. 90.00-98.00; few lots mixed Good and Choice 840-950 lbs. 70.00-72.50; one lot Good 950 lbs. Holsteins 67.50. Market courtesy of USDA.

Indiana Livestock Auction

Homer City, Pa.
March 15, 1979
CATTLE 90. Compared with last week's market, SL cows 50 cents-1.00 higher. SL steers few Good 63.00-66.50. Choice sl. heifers 1 at 64.25, few Good 60.25-61.50, 1 Standard at 57.25, 1 Utility at 54.25. Utility & Commercial sl. cows 51.50-55.00, Cutters 49.50-52.50. Canner & L. Cutter 45.50-50.00. SL. bullocks Good 1 at 63.50. Yield Grade #1, 1 at 1600 lbs. 64.50.

FEEDER CATTLE: Few Good & Choice 350-525 lbs. steers 88.00-98.00, Good & Choice 350-610 lbs. heifers 65.00-88.00, few Med. 450-650 lbs. 54.00-60.00. Good & Choice 500-725 lbs. bulls 63.00-70.20.

CALVES 135. Vealers grading Good & Choice steady. Standard 1.00-2.00 higher. Vealers Choice 100.00-115.00, Good 90.00-105.00; Standard & Good 90-120 lbs. 88.00-103.00, 70-90 lbs. 70.00-85.00; few Utility 55-110 lbs. 55.00-67.50.
FARM CALVES: Hol.

Bulls 90-120 lbs. 91.00-116.00; Hol. Heifers 85-115 lbs. 92.00-130.00, few 160.00-170.00.

HOGS 83. Barrows and gilts mostly \$1.00 lower. US No. 1-2 barrows & gilts No. 1-3 200-245 lbs. 49.50-50.75; No. 2-3 200-265 lbs. 47.00-49.30, 1 lot No. 1-3 30 lbs. 49.00. SOWS US 1-3 350-550 lbs. sows 41.25-47.75. BOARS 34.75-40.00.

FEEDER PIGS 9. US No. 1-3 40-50 lbs. feeder pigs 35.00-45.00 per head.

SHEEP 9. Woolled sl. lambs Choice 55-65 lbs. 65.00-69.00, 1 Good 58 lbs. 55.00; Slaughter ewes a couple 36.00 & 38.00.

Western Maryland Market

Western Maryland Stockyards, Inc.
Westminster, Md.
March 13, 1979

BUTCHER CATTLE: Good run, mostly cows offered. Fat Steers - Good demand, mostly steady; Good-Choice 63.00-68.75; Standard 59.00-63.00; Heifers, Top good to \$65.25; Cows, good run, prices higher; Good Cows, to 57.75; Standard & Utility 53.00-54.50; Canners 51.00-53.00; Shelly 51.00 Down; Bulls strong demand; Top \$65.85.

BUTCHER HOGS: Medium run, \$2.00-3.00 lower! Top Hogs 47.85; Bulk 200-225 lbs. 47.00-47.85; 230-260 lbs. 46.00-47.25; 170-190 lbs. 43.00-46.00; Sows to 44.25, bulk 40.00-43.00.
VEAL CALVES: Medium

run, mostly steady. Tops, to 111.00; Good-Choice 100.00-111.00; Standard 90.00-100.00; Light calves 75.00-95.00; Weak & Rough 75.00 Down; Farm Heifers to \$125.00; Bulls to 100.00.

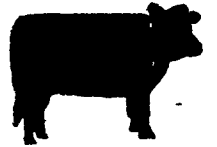
LAMBS: Few offered; Good & Choice to 60.00.

STOCK CATTLE: Good run, very active bidding. Stock Steers 70.00-97.00; Stock Heifers 50.00-85.00; lightweight holsteins to \$135.00; Stock Bulls 60.00-99.00.

PIGS AND SHOATS: Good run, \$3.00-5.00 higher! by the head 20.00-45.00; Shoats to

50.50; By the lb. 100-150 lbs. 45.00-56.50.

Results of Farm Bureau's Quality Meat Cow Sale for March 13. 66 Cows - Utility & Commercial 52.00-55.50; High Yielding 55.60-56.85; Few Heifers 58.00-62.00; Cutters 51.00-44.00; Canners & Low Cutters 47.00-51.00.



Please come to our OPEN HOUSE

MARCH 19-24 8:00-5:00 Mon.-Fri.
8:00-12:00 Sat.

and see our

DEUTZ FARM EQUIPMENT

AT PAUL M. BYERS, INC.

1700 Edgar Ave. Chambersburg, Pa. 717-264-5676



SPECIAL DEALS ON SELECT MACHINES!



Figure it for yourself.

You get top feed conversion & better daily gains with Bovotone 12-D.

Relying on homegrown grain and roughage this year? Make your cattle more feed-efficient by fortifying their rations with Bovotone 12-D.

Grain and grain silage, while high in energy, are low in minerals, vitamins, and other nutrients that promote top performance. Bovotone 12-D corrects these deficiencies and encourages maximum feed intake when high levels of silage are fed.

Keep your out-of-pocket costs low throughout growing and finishing periods by using the most economical source of additional protein available.

Bovotone 12-D makes a difference you can take to the bank. Your figures will prove it.

Use 10% less feed with Bovotone No. 76

If your feed supply is low, or you simply want better feed efficiency, fortify with Bovotone No. 76. This highly potent pre-mix contains Rumesin® plus all the vitamins and minerals needed to properly fortify feedlot rations. You can save over 10 percent on your feed supply, and that means more profit for you.

Now is the time to compare.

See your Vigortone dealer soon. He's ready to compare the performance of Vigortone's low-cost cattle feeding programs with any other you name.

® Rumesin is Elanco's trademark for monensin sodium

VIGORTONE

PRE-MIXES It's Time To Compare!

50 branch offices - 5000 dealers - 3 manufacturing plants

FOR FURTHER INFORMATION CONTACT YOUR LOCAL REPRESENTATIVES LISTED BELOW

LEON B. HERSHEY
Box 265 Paradise, PA
717-442-4807

B. RUSSELL SAUDER
R5, Box 322A Manheim, PA
717-665-4153

JASON E. MILLER
169 Strasburg Pike
Lancaster, PA
717-393-7244

WM. J. YODER
23 N. Bridge St
Christiana, PA
215-593-2101

PAUL BITTNER
Germansville, PA
215-767-7140

H. MELVIN CHARLES
R1 Washington Boro, PA
717-684-5783

PETE CALDWELL
R1 Windsor, PA
717-246-1046

RALPH E. BRUNGART
Loganton, PA
717-725-2355

ALVIN ESH
Box 72 Intercourse, PA
717-768-3128

WERTZ BROTHERS
R5 Danville, PA
717-275-4407

CHESTER SOLTYS, JR.
Spring City, PA
215-948-3647

JAMES STUTZMAN SONS
R3 Kutztown, PA
215-683-7198
215-682-2624

SHERWOOD A. WITMER
Box 138 Berrysburg, PA
717-362-8823

THOMAS R. WORTHINGTON
R3 Muncy, PA
717-546-2313

PAUL L. KREIDER
R2 Palmyra, PA
717-964-3791

WILMER J. WEAVER
R1 Fredericksburg, PA
717-865-6710

J. CLYDE BRUBAKER
2418 Harrisburg Pike
Lancaster, PA
717-898-8984

C. GEORGE BOOK
R2, Box 80 Mifflintown, PA
717-527-2228

AMOS HURSH
Litz RD#4, PA 17543
717-733-6776

ELAM G. HOOVER
R2, Box 531 Reading, PA
215-926-2908

ELWIN H. REAM
Hughesville, PA
717-584-4085

LEON BURKHOLDER
975 Spruce St
New Holland, PA 17557
717-354-5502

RON HERSHEY
RD#2 Gap, PA 17527
717-442-8573