

Public Sales Register

FRI MAR 16 - Farm Equipment Dispersal for Donald & Beryl Van Seyoc located 7 miles Northeast of Shipensburg, Pa along Rt 11 Ralph W Horst, Auctioneer

FRI MAR 16 Public Sale of Tools, Butcher Equipment, Etc To be held on the premises along Route 645 approx 1/2 mile North of Route 78-22 Conditions by Eva Brown, executrix Auctioneers Weik & Copenhaver

FRI EVE MAR 16 & SAT MAR 17 - Public Sale of Building Supplies & Hardware Location - Suburban Window and Door on Route 61 between Orwigsburg and Schuylkill Haven Terms by Suburban Window and Door Auctioneer - C L Butter Zimmerman

FRI MAR 16 - 6 30 P M Public Tool Auction to be held at the Sacramento Fire Co. 10 miles West of Hegins Exit 34 of I-81 on Route 25 Auctioneer Roy Stanton

FRI MAR 16 - 12 Noon Whitesell Dairy and Dairy Equipment, 32 Interstate Tested Mature Cows, Bulk Tank, etc Located 1 mile S of Resville, NY (Steuben Co) off Rt 248, Sale by Pirrung's, Wayland, NY or Ulysses, PA 814-848-7421 Bob Shaylor, Auctioneer

FRI MAR 16 - 11 A M Public Sale Complete Holstein Dispersal 118 Head, Milking Equipment, Hay & Ensilage Located on the farm on Old Annapolis Rd 4 miles North of New Market, one mile East of Langanore High School, in Frederick Co, MD Sale by Mr & Mrs Wayne Storm Sale Managers & Auctioneers Remsburg Sale Service

FRI MAR 16 - 11 A M Cattle, Machinery and Produce Located on Pleasant Valley Rd, 1/2 mile off Rt 20, 4 miles East of Madison and 3 miles West of Sangerfield Sale by John and Marcella Jiggins, Sangerfield, NY Jack Wood's Livestock and Auction Service

GAP FIRE CO. SALE SATURDAY, MARCH 24

9:30 A.M.

Located 15 miles East of Lancaster at Gap, Lancaster County, Pennsylvania, just off Route 30 & 41, Gap, Pa.

NEW & USED FURNITURE
New Heatalator - Zero Clearance Fireplace
NEW & USED GARDEN EQUIPMENT

Lumber and building material, seafood, canned goods, truck load of fresh fruit, potatoes, groceries, sugar, assorted Easter candies, household goods.

Socket sets, bench grinders, vises, hydraulic jacks, drill presses, drills & bits.

Air tools and hoses, metal cutting band saws, wood jointers, carpentry & masonry tools, load binders, tarps and much more.

Miller Matic 35S mig welder on wheels, good condition. Utility storage barns, chain saws, fire wood, hay, straw, corn.

Farm Machinery

New 32' Zimmerman elevator; horse drawn equipment; harness & collars; new feed bins; calf hutch; steel cattle gates plus many more items by day of sale.

Special quilt displaying various scenes in Gap.

Dry goods, clothes, jackets, boots, socks, shirts, etc. Items sold on commission, donations appreciated.

No Hucksters - No Chicken Equipment - No Pets

PLENTY OF GOOD HOME MADE FOOD & BAKED GOODS BY THE LADIES AUXILIARY.

For Sales & Consignment Information Please Call:

ELVIN BEILER 442-8126
CALVIN BEILER 442-4842

Terms by
GAP FIRE CO.

AUCTIONEERS:

Ira Stoltzfus & Sons & other local Auctioneers

Please bring your items March 22 or 23rd or before 8 A.M. on day of sale. Thank you.

PLEASE NOTE: Items left on the grounds after April 16, 1979 will become the property of the Fire Company.

PUBLIC SALE



OF VALUABLE REAL ESTATE THURSDAY EVENING, MARCH 29

At 7:00 P.M.

Located midway between Springville and Route 23, 3 miles South of New Holland, turn off Route 23 at Phillips 66 Gas Station 4 miles South on Peters Road, Earl Township, Lancaster County, Pa.

12' x 70' Holiday cottage with additional two bedrooms, living room and storage, new carpet and linoleum, patio, large cistern and well, oil fired hot water heat, 42 x 70 pole shed with aluminum siding, electric heat, and air conditioning combined, office space above, large overhead door, large walk-in cooler, building well insulated, black top drive, shade and shrubbery.

10% down day of sale; balance on or before April 28, 1979.

Open house March 9 from 6:00 to 8:00 p.m., and March 17 from 2:00 to 4:00 p.m. For an appointment call 215-267-3050.

Auctioneer's Note: If you are looking for a business location in the country see this one.

Terms by
SAMUEL B. STOLTZFUS

Auctioneers:

Robert E. Martin & Son, 656-7770

Frank L. Steller, 656-9185

Wentz & Wentz, Atty.

LATE MODEL GRAIN FARM EQUIPMENT

AUCTION

**4 TRACTORS - M.F. COMBINE
2 DUMP TRUCKS
PLUS FULL LINE!**

SATURDAY, MARCH 17

At 11 A.M.

For James A. Stull (Broadway Farms) Rt. 57 just east of Broadway, N.J. 5 miles west of Washington, N.J. 9 miles East of Easton, Pa. Discontinuing farming! Blizzard date Mon., March 19, 11 A.M.

11 A.M. - Some household items (not many). Some small tool house items!

12 Noon - Trucks - 1975 GMC 6500 16 ft. dump truck w/ETL grain body, V8 2 SPD rear, 10 x 20 rubber, air brakes, 5000 miles like new! 1965 Chevy #60 18 ft. dump grain body (36000 mi.).

Massey Ferguson 750 DL combine 4 row corn hd 36-40" and 14 ft. grain hd, cab w/air real sharp condition!

Tractors - J.D. 4230 DL post cab, Quad range, 850 hr. loaded (real sharp)! M.F. 1080 DL loaded, M.F. 175 DL tractor loaded, M.F. #32 hyd front end loader on the 175, Oliver 66 row crop.

John Deere Equipment - 1240 4 row corn planter, 1209 9 ft. haybine 1 yr. old, 8250 grain drill 18 hole 2 yr. old, F 950 10 ft. cultimulcher, 300 hyd 12 ft. disc.

Massey Ferguson Equip. - 5 btm auto reset 880 semi mtd. plow A-1, 3 PTH 4 row cultivator, 5 ft. rotary mower, 300 snow mobile.

Other Makes - Hawkbilt 4144 12 ft. stalk cutter like new, N.H. 55 hay rake, 3 well bilt kicker hay wagons on factory gear, Oliver 3 PTH 7 ft. mower, 3 PTH rear scraper, west coast plow harrows, 3 sec. springtooth harrow, flat wagon, windpower PTO alternator, Little Giant and favorite grain wagons, hay crusher, old grain cleaner, platform scale, Oliver 2 row cult, Dozer blade for tractor, 40 ft. portable pipe hay elevator, plus other items. All Equipment in very good condition!

Attention - Most of the above equipment has only been purchased new in the past 1 to 3 years. This sale offers a tremendous opportunity to any one engaged in the agricultural profession! Owner & auctioneer not responsible for accidents!

Terms - Cash or Good Check with Identification, Paid in Full Sale Day! Lunch available.

Owner
JAMES A. STULL,
Broadway, N.J.

Sales Conducted By
Col. Fred R. Daniel Auctioneers, Inc.
Neshanic Sta., N.J. 201 - 369-4784

AUCTION

**FARM EQUIP., POTATO EQUIP.,
PICK UP & VAN TRUCKS
ANTIQUES, HOUSEHOLD GOODS
SATURDAY, MARCH 17**

At 10 A.M.

(18 miles N. of Allentown), along Rt. 309 between New Tripoli & Pleasant Corner near Northwestern High School, Heidelberg Twp. Lehigh Co. Pa.

Ford 5000 gas trac. w/extras, 2165 hrs.; Ford 3000 trac. w/extras; Ford 3 pt. 3 btm 16" roll over pl.; Ford 3 pt. 3 btm 14" pl.; Ford 3 pt. 2 btm 14" pl.; 7" offset disc; MC 9' disc; 10' single roll cultipacker; 3 pt. 2 row field cult.; (2) 3 pt. 2 row cult.; Ford 3 pt. 2 row corn planter; 3 pt rear blade; (2) 3 pt. rear Carriers; 3 pt. 10' harrow; 3 pt. 4 row weeder; Ford 3 pt. semi mt. rake; 3 pt. 2 row rotary hoe; Ford front mt. snow pl.;

12' 4 whl. dump trailer; 3 Grove 12' 2 whl. dump trailers; Woods Cadet 72-3 pt. rotary cutter; NH 275 baler w/sweep pickup; Oliver 2 row potato digger; Oliver 2 row hy speed potato planter; Ideal 22' bin stacker; Bean 400 gal. potato sprayer w/large pump & 40' brush boom; Singer 22' rubber belt elev.; Trexler potato cutter; Detecto potato scale; 500 lb. platform scale; 2 Boggs potato graders w/picking table; Boggs 18" potato crusher; lot of picking crates; burlap potato bags; (3500) 50 lb. paper potato bags (new); dump rake; six hole hog self feeder; scalding trough; 10'-6'-4' cast iron cattle water troughs; ext. ladder; 18' coal chute; PTO grass seeder; Milwaukee 2500 Watt eng. driven generator; split oak potato baskets; 5/8 & peach baskets; 100 new 12"x24" roof slate; Simplicity 5HP roto-tiller; 1973 Chev. Deluxe 20-3/4 ton pickup, 56,000 miles; 1972 Chev. 30 Tradesman Van, 55,000 miles.

HOUSEHOLD ITEMS:

Early High cupboard w/turned feet; round ext. dropleaf table w/six broad boards; 2 sq. ext. tables; 2 pc. oak BRS; treadle sewing machine; Eureka elec. sweeper; port. 3 speed record player; Coolerator chest freezer; Frigidaire refrig.; 1 kettle butcher stove; lg. picnic table; Rem. mod. 29-12 ga. pump gun; Rem. mod. 760-30-06 w/4 p. scope; Win. mod. 62A 22 cal. repeater; plus other articles too numerous to mention.

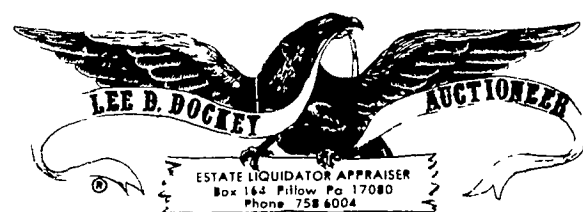
Terms: Cash or check, sale day.

Refreshments served

Auct. Note: Sale because of death in family, equip. & trucks in nice shape.

Order by
MRS. PAUL WESSNER

Ralph W. Zettlemoyer Auction Co.
R.D. 1 Breinigsville, Pa.
Tele: (215) 285-4616



PUBLIC SALE OF ANTIQUES & COLLECTIBLES WEDNESDAY, MARCH 21

10:00 A.M.

Located at Lykens Valley "SHOP AND PLAY" Hall, Route 209, Lykens, Pennsylvania. Will be selling an accumulation from three generations of the Prichard Family of Ashland, Pennsylvania. To be sold to the highest bidder without reserve.

FURNITURE

2-Pc. Walnut Marble Top Bedroom Suite; Walnut Marble Top Square Stand; Walnut Marble Top Sideboard with Orante Top; Walnut Marble Top Dresser; Walnut Top Washstand; Walnut East Lake-Style Bookcase, Triple Section with Drawers Below; Walnut Bookcase with Drawer in Base; Very Unusual Brass and Iron Hall Rack; 3-Pc. Victorian Living Room Suite; Bamboo Sewing Stand Plus Other Bamboo Stands; Soft Wood Combination Desk-Bookcase; Jelly Cupboard; Three and Four-Drawer Cottage Bureaus; Country Store Cupboard, 12 Pane Top, 4 Drawers in Base; Walnut Extension Table; Assortment of Blanket Chests; Assortment of Empire Chests of Drawers; Piano Stool; One-Drawer Soft Wood Stand; Selection of Wicker Items; Victorian Wardrobe; Two-Drawer Spool Cabinet; Kitchen Cabinet; 6-Legged Drop Leaf Table; Small Flour Bin; Plank Bottom Chairs; Assortment of Washstands; Many Oak Items such as Library Tables, Platform Rockers, High Chest of Drawers, Bachelor's Desk, Selection of Stacking Sectional Bookcases, Sewing Table, Medicine Cabinets, Sideboards, Chairs; Pedestal Stands, Extension Tables, Etc. NOTE: Some of the oak items have original Larkin labels on back.

DISHES

Covered Dish with Frosted Dove on Top of Lid; Flint Glass Cup Plates; Stiegel-Type Bottle with Floral Decoration; Selection of Depression Glass, Milk Glass, Souvenir Glass, Carnival Glass, German China, Pressed Glass, Opalescent Glass, Limoges China, Goofus Glass; 1911 Calendar Plate; Assortment of Salt Dips; Etc.

MISCELLANEOUS ITEMS

Lg. Selection of Larkin Items in Original Boxes; Larkin Books; Postcard Albums; Tiffany-Type Table Lamp; Lg. Selection of Early Advertisement Calendars such as Grand Union Tea Co., Larkin, Etc.; Hanging Hall Light; Metal Sewing Bird; Butter Print; Tin Wind-Up Toys such as Dog, Roosters, Etc.; Blue Decorated Crock; Selection of Advertisement Tins; Brass Bucket; Lg. Doll with Bisque Head Plus Other Dolls; Sulphide Marble; Box of Assorted Old Clothing; Old Reading Cone-Top Beer Cans; Planter's Peanut Jar; Confirmation Certificate Dated 1847 in Early Frame; Beaded Purses; Student Lamp Base; McHenry & Son Whiskey Jug; Redware Crocks; Spatter-Type Crockery; Hull Pottery; Iron String Holder; Unusual Kerosene Heater; Brass Candlesticks; Wallace Nutting Print; Butcher Ladle; Photo Album; Quadruple Plate Items; Assortment of Picture Frames and Early Books.

FOR COMPLETE CATALOG SEND NAME, ADDRESS AND STAMP TO AUCTIONEER.

TERMS: Cash, Travelers or Certified Check. Personal checks accepted only from persons having an established account with Auctioneer.

SADIE J. SCHAFFHOUSER

Owner

DOCKEY, AUCTIONEER