

Young Farmers

(Continued from Page 122)
pounds of milk and 861 pounds of butterfat in 305 days.

Corn Silage

1. Elmer Mast, with a per-acre population stand of 28,000; tonnage of 30.33 (green) and a TDN tonnage value of 8.49. 2. Ben Beiler, plant population 23,000, 29 green tons per acre, and a TDN value of 7.85. 3. Landis Reid, 23,000 population, 23.5 green tons, and 7.75 TDN. 4. Calvin Blank, 26,000 population, 25.66 green tons, and 6.929 TDN. 5. Richard Buckwalter, 25,333 population, 25.666 green tons, and 6.929 TDN.

Corn for Grain

1. Nathan King, 194.68 bushels per acre; 2. Earl Mast, 193.28; 3. Elmer Mast, 187.08; 4. Harold Bare, 174.60; 5. Leon Kurtz, 174.34; 6. Art Hershey, 173.47. All yields were standardized to 15.5 per cent moisture.

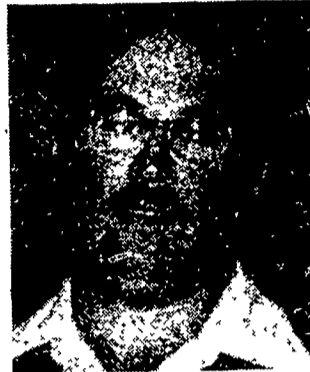
Hay Contest

1. Harold Bare, with a net energy rating of 44; 2. Ben Beiler, 43; and 3. Earl Mast, 42.

An election of officers was also held during the 2½-hour banquet. The new president



Earl Mast



Landis Reid

of the Octorara Young Farmers is Nate King of Cochranville. Vice president is Harold Bare; the secretarial post went to Leon Kurtz of Conranville, and

Virginville Grange meets

VIRGINVILLE — The Virginville Grange met on February 21 with Eugene

Schlegel substituting as Master.

Harold Reppert was received as a new Grange member.

It was reported that the Hamburg State School is looking for flea market items and cookie donations.

On March 5th, at 7:30 p.m., Olive Dietrich will show slides and demonstrate how to decorate eggs.

The winners of the cherry pie contest were Elanore Hill, Lila Newhard and Minnie Adam.

The next meeting will be on March 8th at 7:30 p.m.

The youth will be going to a hockey game on March 31st at 6 p.m. Their next meeting will be on March 6th at 7:30 p.m. The Youth will have a roller skating party on March 20th. On March 23rd and 24th the youth play will be held.

xxx

1903-John Gehl's brothers—Henry, Michael, Nick—join him to form Gehl Brothers Manufacturing Company.

MF LAWN & GARDEN TRACTORS

FANTASTIC SPRING SALE



	List	Sale	SPECIAL
MF 85, 8 HP, 36" mower, electric start, 6 speed trans	\$1275	\$999	
MF 1200, 12 HP, 42" mower	\$2427	\$1999	\$1850 - 1 only
MF 1450, 14 HP, 42" mower, 2-speed hydrostatic, hydraulic lift	\$2929	\$2595	\$2450 - 1 only
MF 1650, 16 HP, 48" mower, 2-speed hydrostatic, hydraulic lift	\$3172	\$2695	\$2575 - 2 only
MF 1655, 16 HP, twin cylinders, 2-speed hydrostatic, hydraulic lift, direct drive mower	\$3482	\$2795	\$2680 - 1 only

Most of above mower sizes are interchangeable.

BUY WITH CONFIDENCE FROM THE LARGEST M.F. LAWN & GARDEN DEALER

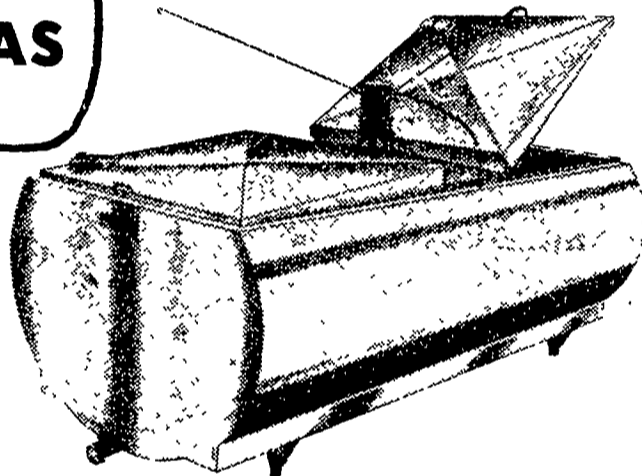
LAWN CARE OF PENNSYLVANIA

FULL PARTS & SERVICE AVAILABLE

Mon., Tues., Thurs., Fri. - 8 to 8
Wed. 8 to 5 - Sat. 8 to 2
1 Mile North of Martindale on Gristmill Rd.
Phone (215) 445-4541

A Little out of the way - but lots less to pay.

MAKE ME A BULK MILK COOLER THAT HAS EVERYTHING!



MUELLER Bulk Milk Coolers

THE MUELLER MODELS OH, MHL, AND MW WITH HIPERFORM MAKE ALL OTHER BULK MILK COOLERS OBSOLETE

SEE THE MUELLER NEW MODELS

★ 500 MW ★ 600 MW

The "MW" is one of the Lowest pouring Height Bulk tanks. Check with us all the new features of the "MW" bulk tank.

If you are in the market for a bulk milk cooler and you don't check all the advantages of the Mueller "OH", "MHL", and "MW" you may be buying an obsolete cooler.

USED TANKS

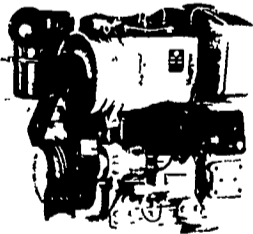
375 gal. DeLaval
2-500 gal. Milkeeper
350 gal. Esco

425 gal. Esco
500 gal. Mojoi **SOLD**
600 gal. Mojonnier

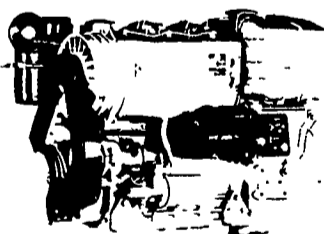
400 gal. Dari-Kool
D-2 600 gal. Gi **SOLD**
800 gal. Jamesway

2-400 gal. Jame **SOLD**
500 gal. Jamesway

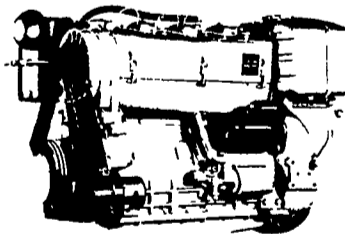
ASK US TO SEE A MUELLER PRE-HEATER IN OPERATION, RIGHT ON THE FARM.



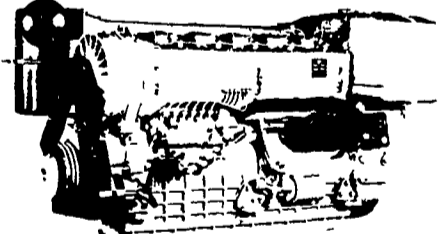
2800 R.P.M.
44 SAE HP
40 DIN HP



2800 R.P.M.
66 SAE HP
60 DIN HP



2800 R.P.M.
88 SAE HP
80 DIN HP

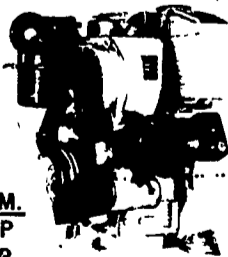


2800 R.P.M.
132 SAE HP
120 DIN HP



1050 SU SERIES

2800 R.P.M.
22 SAE HP
20 DIN HP



FOR MORE INFORMATION ON HIGHER H.P. — CALL US! —

USED DIESELS

- (4) SR2 Lister
- (4) DVA 1500 Slanzis
- 1 - ST2 Lister

THE "RIGHT FROM THE START" DIESEL ENGINE LINE FOR FAULTLESS PERFORMANCE.

QUEEN ROAD REFRIGERATION

Box 67, Intercourse, PA 17534
Phone: John D. Weaver - 717-768-9006 or 768-7111
or Answering Service - 717-354-4374

24 HOUR SERVICE