

REAL ESTATE

TEXAS FARMING FRONTIER - Dalhart, Texas, has prime irrigated farmland in the \$800 per acre range. 100 years of strong water. Grow 150-200 bushel corn, mild winters, 178 day growing season, and large local grain market. 50 cents - \$1.00 per acre property tax - no state income tax. Growing community with progressive school system. Free brochures available. Call collect day or night. (806) 249-5613, (806) 249-4000. Mike Justice & Associates, Box 501, Dalhart, Texas 79022.

For Sale - Modern egg farm, 30,000 layers, 2 cage units, automatic feeding, cable cleaners, process your own eggs & get top dollar with established markets. For details phone 412-459-9110.

Wanted to Rent - 50 to 150 tillable acres in Northumberland, Dauphin, Schuylkill and Cumberland counties. Short or long term lease. Write: P.O. Box 12, Dalmatia, PA 17017.

For Rent - 45 acre tillable in Hellam Township, York County (717) 845-1518 from 9 to 5.

SOUTHEAST MINNESOTA - Tama soil, the best. 524 acre grain, dairy & beef farm, approx. 470 tillable, 2 excellent homes. 560 acre grain, dairy, & hog farm, approx. 535 tillable, 3 homes, 1 very good. 265 acre grain farm, approx. 238 tillable, beautiful home. These farms are close together & are presently farmed as one unit. Jack DeYoung, Utc, Minnesota 507-932-3778.

CAMPGROUND - On 150 acres with 170 developed sites, 24'x60' facilities building, 40'x80' recreation building, 40'x56' pavillion, owners home with attached 40'x40' garage. Tennis courts and swimming pond. Fully equipped. Camping season just starting. ATKINSON REAL ESTATE, INC., 93 East Main Street, Gouverneur, New York 13642 315-287-1310.

85 acre farm near Shipensburg, PA, 54 tillable and mountain land, barn, hog pen, 2 story house, AUSHERMAN BROTHERS REALTORS, 229 N. 2nd St. Chambersburg, PA 717-264-6715.

70 acres land, 45 tillable, 24 ridge with timber, also stream. good hunting, (no home), 40 x 60 bank barn, A-1 condition, along hard top road. Located in Decanter Twp., Mifflin Co., PA. More information Call or write: 717-248-4630 Blaine C. Aumiller Jr. 7th Ave., Burnham, PA 17009.

BRADFORD CO. DAIRY BY OWNER

717-247-7425
254 acres, 95 tillable, balance woods and pasture, 34 stanchions, good buildings, black top road, good milk market, barn cleaner, bulk tank included.

PERRY CO.

220 acre farm with approx. 110 acres wooded, 5 bedroom house and 2 large new buildings, lots of hard road frontage, close to Loysville on Rt. 17
JOSEPH A. MYERS REAL ESTATE, INC.
401 York St. Gettysburg, PA. 717-334-9204

REAL ESTATE

LEASE QUALITY DAIRY CATTLE

Various plans available.
Call or Write:
Dairy Farm Leasing
1700 Dupont Ave. South
Minneapolis, Minn. 55403
612-377-1489

FOR SALE FARM NEAR COBURN, CENTRE CO.

88 acres with 8 acres pasture, 2 acres woodland, .70 acres tillable, limestone soil, large log barn, large 2 story milk house, silo, corn crib, chicken house, good spring, stream, trailer, no farm house.

PHONE 814-349-5871

FARMS

DAUPHIN CO. NORTHUMBERLAND CO.

60 Acres - \$85,000
Dalmatia Area
Nice well done home with adequate outbuildings, Pole-barn, good orchard
6 to 40 Acres
\$40's to \$60's
HALIFAX AREA
Depending on your choice of Acreage
Beautiful setting
SUSQUEHANNA VALLEY REAL ESTATE, INC.
Box 590, R.D.#2, Halifax, Pa.
(717) 896-3032

Your Resident Broker for Dauphin & Northumberland Counties



200 BUSHEL CORN TRADE MARK

Located in the Corn Belt. One of Nature's phenomenon. The world's largest farming area.
LAND IS OUR ONLY BUSINESS.
BILL SHARKEY
AFLM - Broker
#25 N W Second St
Faribault, Minn 55021
507-334-2081
Broker Participation Invited

STEER BUSINESS LOOK GOOD?

We have a Berks Co. operation for you. Two Harvestore silos, Harvestore liquid manure system, bunk feeders w/crimper & scale. Land in a high state of production. 150 acres w/road frontage along 2 hard surfaced roads. Shown by appointment only.

SPORTSMEN
Tired of coming home without game? We have 30 acres adjoining the Middlecreek Waterfowl Project. Has its own dam. Call for details.

ATTENTION HUNTERS!

Looking for a place to build your dream camp? We have 97 acres that adjoins State Gameland & is close to the Middlecreek Waterfowl Project. Call for details.

FISHER REAL ESTATE
717-273-3745 or
717-866-7219

REAL ESTATE

FARM SALE

Must sell 60 acre Christmas tree farm, Turbotville \$650 00 per acre, 50 acres farmland, Lairdsville \$700 00 per acre, 50 acres farm and mountain land, Jerseytown \$600 00 per acre, 370 acres (3 farms) Troxleville \$890 00 per acre Terms Call Dan Manetta 759-8562 or write 100 E Front St, Berwick, Pa 18603 Bonafide offers with cashier's check Down payment considered

BERKS CO.

30 acres - 80% good limestone farm land, approx. 900 ft. road frontage, zoned agri-business \$90,000. Terms possible.

ADAMS CO.

Tyrone Twp. - 1/2 mile west of Heidlersburg on Rt. 234, 2 adjacent parcels: 30.004 A \$33,500, 31.666 A \$38,700, 3rd adjacent parcel also available. Be in on this action. Owner really wants to sell!

HENRY GEHMAN REALTOR
215-445-6653

MOHAWK VALLEY

Dairy farms in and around the "Mohawk Valley." One of the largest selections of farms in this Mohawk Valley area. All sizes, all prices.

When farm hunting, contact:

JOHN L. SUBIK, Realtor

27 West State Street, Johnstown, NY 12095
or Call: 518-762-4942 or 518-762-4451.

FINGER LAKES AREA SENECA CO., NY

Farms - Dairy & Cash crop, 300 plus acres, 2 houses, several barns. Financing & low interest. Neighbored to other PA farmers.

175 acres, 3 or 4 bedroom house, good barns, several outbuildings. Ideal pig farm. Can be split up. Possible financing. Asking \$135,000.

PATCHEN REAL ESTATE

For Appointment Only
Call Norm Brewer
607-532-4949

HIGH HERD AVERAGE from about 130 milkers on 850 acre dairy, 400 tillable, some good river bottom land. Modern 136 tie pipeline barn, 4 concrete plus 2 new Harvestore silos, second barn for 50 head, concrete barn yard w/feeder. Exc. main home plus 4 tenant houses. Cattle, machinery. \$700,000

LOTS OF GOOD TIMBER on 300 acre farm, 160 tillable level and rolling terrain, long road frontage. 60 cow barn, 2 silos, many out buildings, 5 bedroom home. Asking \$110,000

14,000 FEET OF TILING on 265 acre dairy, nice big fields. 51 tie barn, dump station, cleaner, mow-elevator. 4 bedroom home, nice shape, 41 milkers, 40 young stock, 3 tractors, equipment. \$198,000

STARTER FARM, 100 acres, 60 tillable, 45 cow barn, wood silo, machine shed. 10 room home, oil heat, nice location. \$65,000 w/29% down.

CHEAPER YET is 110 acre Mohawk Valley farm in need of repairs, about 70 acres tillable. 40 cow barn. 10 room home. \$44,000

SHOULD BE SEEN, 330 acre free stall farm, 220 tillable, much new reseeding. Barn accomodates 88 head, double 3 parlor, 4 silos, new 60 head heifer barn. Exceptional 10 room Early American home.
FREE DAIRY LISTS.

WIMPLE REALTORS SLOANSVILLE, NY
518-875-6355

REAL ESTATE

LYCOMING COUNTY

Oval, 55 acres general farm, 50 acres tillable \$85,000.

NORTHUMBERLAND COUNTY

70 acre general farm, level sandy loam river bottom soil, exceptional 4 bedroom house, city water, road frontage.

UNION & LYCOMING COUNTIES

45 acres nice woodland with stream, excellent deer country.

DAUPHIN COUNTY

70 acre general farm, \$140,000.

UNION COUNTY WHITE DEER

140 acre Dairy, 52 stanchions, 3 silos, 126 tilled, 9 room brick house & stream.

CLINTON COUNTY

Between Nittany Valley & Sugar Valley. 180 acre general farm, real nice farm ground, large barn, nice house. We have many other farms.

DONALD R. WITWER REAL ESTATE

Ephrata, Pa. - Office
717-733-4138 or
215-267-7963

REAL ESTATE

No 146 Lake County farm. 240 acres, beautiful land, 2 family home, 74 cow barn, other buildings. Large mortgage available. For more information contact:

RICHARD POSSON REALTY

R3 Norwich, NY 13815
Ask For Our Farm List.
Ph: 607-334-9727

FOR SALE

315 Acre Grade A Dairy Farm
80 Acres in alfalfa - new silo
Adjacent land can be rented

\$500 per acre

814-848-9833

SOUTH GEORGIA

Relocate in excellent soil and climate, several developed and undeveloped farms available for sale or exchange.

For Information

Ralph Phillips, AFLM THE FARM HAND, INC.

Suite 502 Albany Towers
Albany, Ga 31701
912-883-1153

BRADFORD CO. DAIRY FARM

420 acres, 2 houses and 2 barns, complete facilities for 125 milking cows plus replacements. A ready to go operation.

From Owner 717-549-5618

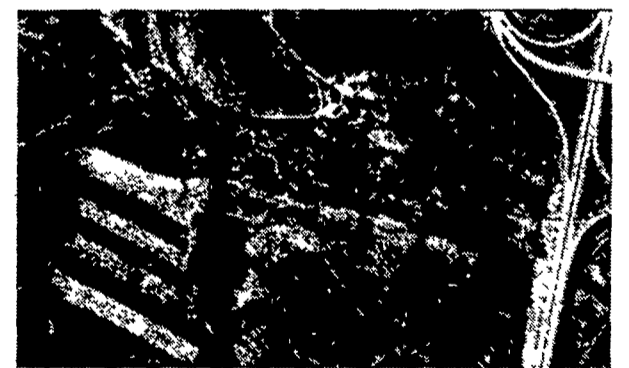
FARMS FOR SALE

(20T) 234 acre beef farm near Gettysburg, PA, 2 houses, barn, 2 silos, and supporting bldgs., stream and pond on property, approx. 25 acres in woods, long road frontage, seller will finance.

(68T) 59 acre gentleman's farm, south of Gettysburg, PA, large 4 bedroom, 2 bath, solid brick home, barn garage and supporting buildings, immaculate home, barn and buildings in excellent condition. Wooded, tillable and open acres with stream.

Call 717-642-5851

TOWN & COUNTRY REAL ESTATE
Fairfield, PA



LANCASTER CO.

East Cocalico & Brecknock Twp., 75 acre farm more or less, part of a larger tract., 2 1/2 story frame home, large barn, tobacco shed, 4 large concrete silos, large stream, ideal for modern hog or poultry operation. Terms: 10% down, 1 yr. + to settlement, immediate possession. Will negotiate terms.

BERKS CO.

30 acres - 80% good limestone farm land, approx. 900 ft. road frontage, zoned agri-business \$90,000. Terms possible.

ADAMS CO.

Tryone Twp. - 1/2 mile west of Heidlersburg on Rt. 234, 2 adjacent parcels: 30.004 A \$33,500; 31.666 A \$38,700, 3rd adjacent parcel also available. Be in on this action. Owner really wants to sell!!

HENRY GEHMAN REALTOR

215-445-6653