

FARMERSVILLE EQUIPMENT - YOUR SINGLE SOURCE FOR TRUCK BODIES AND CONVERSION HOISTS FROM OMAHA

ANOTHER FIRST FROM HARSH.



Steel Grain
Available in
and the ex
Rugged one-

Check our body c
15 gauge steel o
steel body sides
on our large cap
sizes are manufact
roll forming. The
side with maximu
strength. There
warping under str



The Oma
Heavy Duty

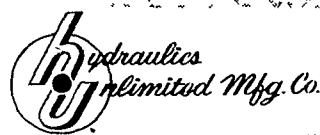


FARMERSVILLE INC.
RD4, EPHRATA,
OPEN HOUSE HOURS:
MARCH 5 - 10

don't
let
this
happen
to you



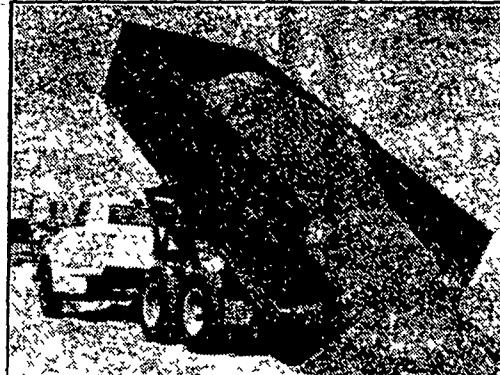
The above photo shows an actual truck body wrecked by a tipover which was caused by uneven lifting of an off-center load. Although HARSH HOISTS® cannot guarantee that a truck equipped with a HARSH® RL-112 will never tip over, the engineered lifting stability of the RL-112 will greatly reduce this possibility.



more
than
a
hoist



IN AN ACTUAL TEST OF THE NEW HARSH RL-112 18,000lbs. of sand was loaded to one side of the truck. The picture on the left shows the actual load used. The picture on the right shows the sand unloading. Note there is very little bending or twisting of the truck body.



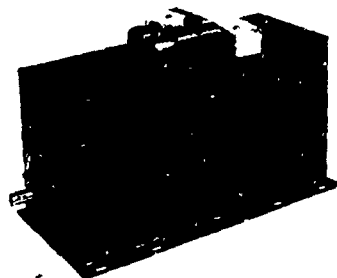
HARSH® RIGID-LIFT 112 SPECIFICATIONS

Cab to Trunnion	Box Length	Overhang (Inches)*	Capacity at 45°
120"	18"	45"	32.9
138"	18"	27"	25.6
138"	20"	51"	27.7
162"	20"	27"	22.3
162"	22"	51"	23.8
186"	22"	27"	19.7
186"	24"	51"	23.1
190"	24"	47"	21.4
Mounting Length			132"

Omaha Standard Hoists Include These Quality Features



Body Prop



Pump, Reservoir, Control Valve and Guard



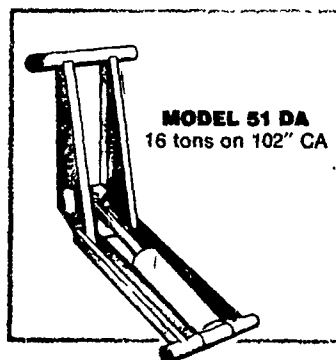
Inside Cab Control



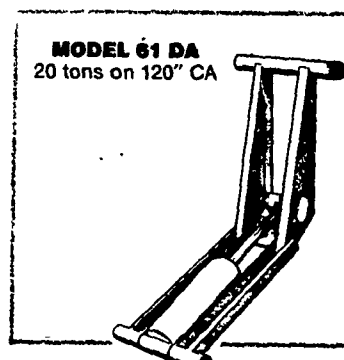
Stainless Steel Cylinders

Omaha Standard

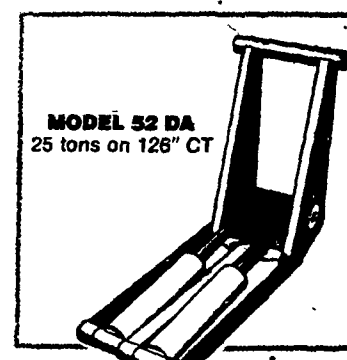
Introduces Three NEW "Stretched" Hoists



MODEL 51 DA
16 tons on 102" CA



MODEL 61 DA
20 tons on 120" CA



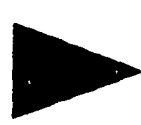
MODEL 52 DA
25 tons on 128" CT

- MODEL 51 DA SPECIFICATIONS**
- Longer reach*
 - 5" cylinder, 22" stroke
 - 2" chrome plated rod
 - 12" mounting height
 - Double-acting
 - Standard 4-piston pump
 - Optional electric pump
 - 12' to 16' bodies
 - 84" to 120" CA trucks
 - Approx. weight=550 lbs.
 - 10 to 25 ton capacity
 - TBEA Class "D"

- MODEL 61 DA SPECIFICATIONS**
- Longer reach*
 - 6" cylinder, 22" stroke
 - 2 1/2" chrome plated rod
 - 12" mounting height
 - Double-acting
 - 8-piston pump
 - 13 1/2" to 18" bodies
 - 102" to 138" CA trucks
 - Approx. weight=615 lbs.
 - 12 to 26 ton capacity
 - TBEA Class "E"

- MODEL 52 DA SPECIFICATIONS**
- Longer reach*
 - Twin 5" cylinders, 22" stroke
 - 2" chrome plated rods
 - 12 1/2" mounting height
 - Double-acting
 - 8-piston pump
 - 14' to 20' bodies
 - 114" to 162" CA trucks
 - 102" to 150" CT trucks
 - Approx. weight=740 lbs.
 - 14 to 31 ton capacity
 - TBEA Class "G"

SEE ON DISPLAY:



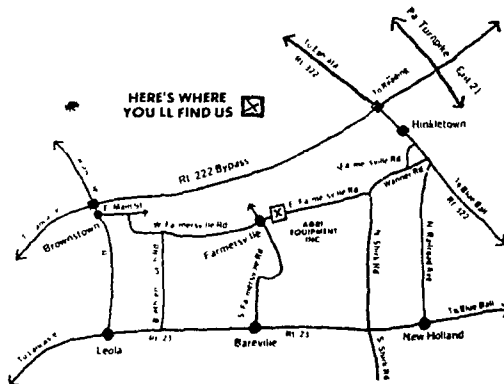
1979 GMC 7000 TRUCK
w/16 Ft. Grain Body & Hoist

1979 FORD F800 TRUCK
w/16 Ft. Grain Body & Hoist

1979 GMC 3500 TRUCK
w/12 Ft. Grain Body & Hoist

FREE INSTALLATION
With The Purchase of Truck Body or Hoist! Offer Good During Open House Week Only - March 5-10. (25% Down Required)

COMPLETE LINE OF
CHELSEA
POWER TAKE-OFFS
IN STOCK



FARMERSVILLE INC.

RD4, EPHRATA, PA

OPEN HOUSE HOURS:
MARCH 5 - 10

MC