

Lebanon County DHIA

(Continued from Page 164)

Luke I. Patches				
Pennie	9-3	21,868	3.8	835
White 12	7-5	17,912	3.4	608
San Bo Holsteins				
12	4-0	17,490	4.2	738
Sonnen Acres				
Val	9-2	18,660	3.7	620
Barbe	8-11	22,352	3.4	757
Dori	4-10	19,010	4.0	769
Olga	3-5	22,050	3.4	739
Cameo	3-5	18,352	3.8	706
Jesse L. Weaver				
564	7-10	18,000	3.5	637
11	7-9	18,143	3.5	630
16	3-11	18,110	4.3	783
13	8-7	16,499	4.3	715
55	3-1	17,192	4.0	689
Mark Copenhaver				
63	6-7	18,342	3.7	687
61	6-4	18,812	4.8	803
Fort Zeller Farm				
Rachel	5-9	15,471	4.9	753
Lentzdale Farms				
43	4-1	17,225	3.6	616
Edwin E. Funck				
Lynn	5-1	19,855	3.3	653
Fay	4-9	21,764	3.6	778
Ray R. Sattazahn				
119	6-3	17,448	4.5	783
76	6-4	19,900	3.2	640
121	5-6	18,638	3.7	682
30	4-6	18,789	3.4	646
Abram T. Lefever				
Jean	8-8	18,121	3.7	665
Janet	5-8	18,353	4.2	764
Irvin Horst				
Wendy	4-4	18,554	3.9	724
Toot	3-6	18,885	3.5	666

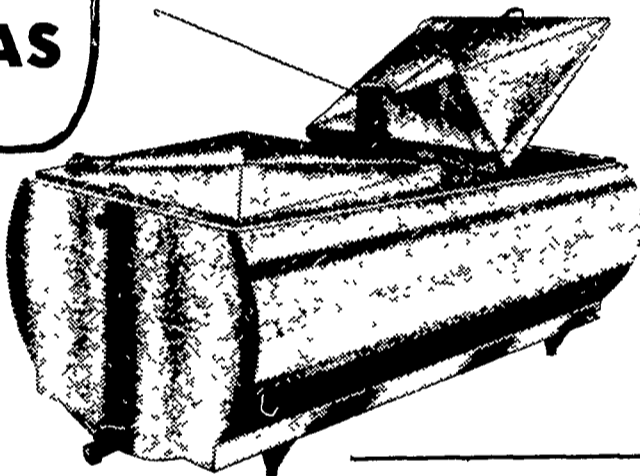
Mark H. Bomberger & Son				
36	8-4	19,742	3.2	632
Warren Hetrick				
Teddy	9-0	16,110	3.8	619
Clyde E. Deck				
Y 22	6-4	18,269	3.3	607
R 76	4-5	18,737	3.8	703
Mark C. Patches				
52	6-4	22,049	3.5	771
12	6-2	19,849	3.9	768
142	4-6	17,539	4.2	741
Clifford Groff				
39	4-6	17,548	3.5	622
Daniel B. Shirk				
Sunrise	5-1	23,316	3.2	755
Ellen	4-5	17,284	3.6	622
Verna	1-11	20,025	3.8	761
John D. Bomgardner				
Tar Lady	4-0	20,088	3.2	649
Isaac E. Zimmerman				
Arby	3-3	13,514	4.7	637
Jane	2-1	14,314	4.3	622
Norman Kline				
Uita	6-0	16,471	3.8	629
Piney	5-1	21,563	3.9	848
Fobes	4-4	18,094	3.5	640
Rabbit	4-0	18,227	3.6	652
Gail	3-0	20,778	3.4	703
Arthur R. Krall				
Star	4-11	18,814	3.5	653
Kim	3-5	18,501	3.8	711
Hershey Bare				
48	7-3	17,031	4.1	704
65	5-10	17,153	4.2	715
2	7-6	19,197	3.6	700
Reuben O. Martin				
Nellie	4-1	17,460	4.0	699
Gail	2-6	17,384	3.6	631
Enos N. Zimmerman				
13	3-1	15,682	4.1	636

Lancaster Farming, Saturday, March 3, 1979-165

Arnold Acres				
Priscilla	5-1	18,610	3.8	715
Elsie	3-7	19,258	3.8	731
Patches	3-5	18,683	3.5	650
George & Vincent Arnold				
91	5-4	14,902	4.2	629
40	0-0	16,962	3.7	627
46	5-3	18,174	4.1	741
2	3-4	18,443	3.6	657
53	4-6	17,313	4.1	702
90	8-3	16,084	4.1	667
Ivan M. Weiler				
Gertie	7-9	18,421	4.1	762
Wilma	7-7	18,547	3.3	605
Sarah	6-10	16,186	4.0	654
Nistina	6-9	21,006	3.5	733
Suann	3-7	18,316	3.7	678
Donald G. Hoffer				
19	5-5	20,314	3.1	635
48	4-6	19,202	4.0	775
23	3-8	18,891	3.5	659
P 43	3-3	19,162	3.4	647
R 3	4-7	20,529	3.6	744
Raymond H. Zimmerman				
Annabel	4-2	19,789	3.3	656
Elmer M. Martin, Jr.				
Ruth	8-3	19,413	3.5	672
Mary	6-0	15,232	4.2	647
Helen	4-2	21,648	3.9	850
Beauty	3-2	15,160	4.0	607
Gideon A. Fisher, Jr.				
75	2-2	17,195	3.5	609
Christian High, Jr.				
10	6-7	19,419	3.2	619
Walter M. Martin				
12	0-0	20,868	3.0	629
Jeffrey D. Rymoff				
33	5-6	16,987	4.1	688

(Turn to Page 166)

**MAKE ME A
BULK MILK
COOLER THAT HAS
EVERYTHING!**



MUELLER Bulk Milk Coolers

THE MUELLER MODELS OH, MHL, AND MW WITH HIPERFORM MAKE ALL OTHER BULK MILK COOLERS OBSOLETE
SEE THE MUELLER NEW MODELS
★ 500 MW ★ 600 MW

The "MW" is one of the Lowest pouring Height Bulk tanks. Check with us all the new features of the "MW" bulk tank.

If you are in the market for a bulk milk cooler and you don't check all the advantages of the Mueller "OH", "MHL", and "MW" you may be buying an obsolete cooler.

USED TANKS

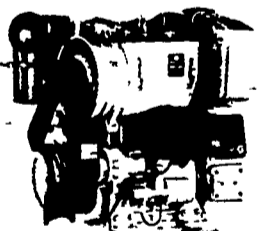
375 gal. DeLaval
500 gal. Milkeeper
350 gal. Esco
425 gal. Esco

500 gal. Mojonnier
600 gal. Mojonnier
400 gal. Dari-Kool

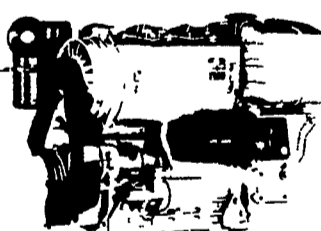
D-2 600 gal. Girton
D-2 400 gal. Gi **SOLD**
500 gal. Wilson **SOLD**

800 gal. Jamesway
2-400 gal. Jamesway
500 gal. Jamesway

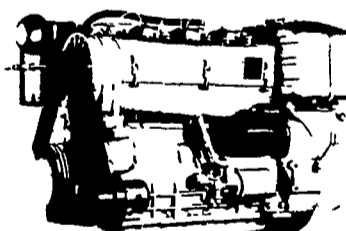
ASK US TO SEE A **MUELLER** PRE-HEATER IN OPERATION, RIGHT ON THE FARM.



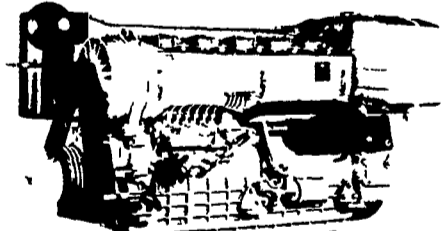
2800 R.P.M.
44 SAE HP
40 DIN HP



2800 R.P.M.
66 SAE HP
60 DIN HP



2800 R.P.M.
88 SAE HP
80 DIN HP

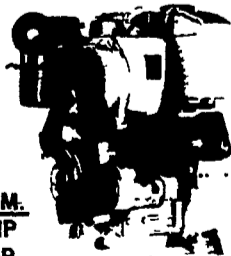


2800 R.P.M.
132 SAE HP
120 DIN HP



**1050 SU
SERIES**

2800 R.P.M.
22 SAE HP
20 DIN HP



**FOR MORE
INFORMATION
ON HIGHER H.P.
— CALL US! —**

USED DIESELS

- (4) SR2 Lister
- (4) DVA 1500 Slanzis
- 1 - ST2 Lister

THE "RIGHT FROM THE START" DIESEL ENGINE LINE FOR FAULTLESS PERFORMANCE.

QUEEN ROAD REFRIGERATION

Box 67, Intercourse, PA 17534
Phone: John D. Weaver - 717-768-9006 or 768-7111
or Answering Service - 717-354-4374

**24 HOUR
SERVICE**