

# Livestock market and auction news

## Leesport Auction

Leesport, Pa.  
February 28, 1979

**CATTLE** 242. Supply included 39 head feeder cattle. Compared with last Wednesday's market, slaughter steers grading Good and Choice uneven, about steady. Slaughter cows \$1.25-\$2.50 lower. Choice 1000-1300 lbs. (2-4) slaughter steers 66.35-68.75, one at 69.25, Good 64.35-67.00, few Standard 60.75-63.50. Few Good and Choice slaughter steers 63.75-85.00. Utility and Commercial slaughter cows 51.25-54.50, couple to 55.10, Cutters 50.85-54.00, Canner and Low Cutters 47.50-50.50, Shells down to 45.00. Few Good slaughter bullocks 65.00-66.00, few Standard 61.25-64.25. Few Yield Grade No. 1, 1150-1685 lbs. slaughter bulls 60.00-66.00. Few Good and Choice 500-975 lbs. feeder steers and bulls 68.00-85.00, couple 440 lbs. at 100.00; One lot Good 850 lbs. holstein heifers at 60.00.

**CALVES** 170. Vealers grading Choice \$3-\$10 lower, Standard and Low Good steady to \$2 lower. Individual Prime vealer at 115.00, Choice 97.00-106.00, Good 85.00-96.00, Standard and Good 90-110 lbs. 87.00-94.00, 70-85 lbs. 75.00-85.00. Farm Calves: Holstein bulls 90-120 lbs. 93.00-140.00; Holstein heifers 85-150 lbs. 90.00-135.00.

**HOGS** 456. Barrows and gilts \$3.50-\$4 lower. US No. 1-2 200-240 lbs. barrows and gilts 53.75-54.00, few to 55.75, No. 1-3 195-255 lbs. 53.00-54.00, No. 2-3 250-280 lbs. 50.75-52.00. US No. 1-3 300-650 lbs. sows 46.50-49.25. Boars 42.00-44.50.

**FEEDER PIGS** 126. US No. 1-3 35-55 lbs. feeder pigs 96.00-129.00 per hundredweight, few Utility 75-100 lbs. 56.50-58.00 cwt.

**SHEEP** 5. One Choice 85 lbs. woolled slaughter lambs at 75.00.

## St. Louis Cattle

National Stockyards  
March 1, 1979

Receipts this week 4,800; week ago 5,300; year ago 7,800. Compared to the previous weeks close, slaughter steers and heifers 1.00 to mostly 1.50, instances 2.00 higher. Cows mostly 1.00 higher. Bulls 1.00-2.00 higher. Supply mainly Choice and Mixed Choice and Prime 2-4 1025-1200 lb. steers, 40 per cent heifers and 15 per cent cows.

**SLAUGHTER STEERS:** Mixed Choice and Prime 2-4 1050-1250 lbs. 66.50-67.75, most closing sales 67.50. Choice 2-4 950-1275 lbs. 65.00-67.00, closing 65.50-67.00. Mixed Good and Choice 2-4 900-1200 lbs. 64.00-66.00. Several 64.00-65.00 good 2-3

900-1175 lbs. 62.00-64.00. Standard to good 2-3 1050-1325 lb. hosteins 59.00-61.75.

**SLAUGHTER HEIFERS:** Mixed Choice and Prime 2-4 875-1050 lbs. 65.50-66.00, most closing sales 66.00, part load early at 66.50. Choice 2-4 800-1050 lbs. 64.00-66.00, mostly 64.00-65.50. Mixed Good and Choice 2-3 700-975 lbs. 62.50-64.00. Good 2-3 700-950 lbs. 60.00-62.50.

**COWS:** Utility and commercial 2-4 48.00-52.50, few commercial 5's at 45.00. Boning utility 1-2 52.50-54.50, couple lots high-yielding 55.00, closing sales 53.00-54.50. Cutter 1-2 46.00-51.50. Canner and low cutter 1-2 42.50-46.50.

**BULLS:** Yield grade 1-2 1050-1800 lbs. 60.00-65.00. Yield grade 1 1400-1900 lbs. 66.00, individual 66.50.

**FEEDERS:** (Including around 1,700 at the regular Thursday auction.) Feeder steers and heifers unevenly 2.00-5.00 higher. Demand good for bulk of represented grades and weights. Supply mainly choice and mixed good and choice 400-900 lb. steers and 300-600 lb. heifers.

**FEEDER STEERS:** Lot choice 380 lbs. 110.50. Bulk choice 300-500 lbs. 95.50-108.00; 500-600 lbs. 84.50-96.00; few lots 625-775 lbs. 77.50-88.25; 800-925 lbs. 70.00-75.75; few lots fleshy 800-1000 lbs. 66.50-71.00. Mixed good and choice 425-475 lbs. 85.00-95.00; 500-575 lbs. 81.00-86.50. Few lots good 400-500 lb. holsteins 80.00-82.00, few lot good 700-725 lbs. 70.00-73.50.

**FEEDER HEIFERS:** Choice 300-425 lbs. 79.00-90.25; 500-600 lbs. 76.00-82.50; several lots fleshy 700-875 lbs. 63.25-68.25. Mixed good and choice 400-575 lbs., 72.50-80.50.

## Omaha Cattle

March 1, 1979

**CATTLE** - Compared previous week's close closing prices on slaughter steers were 50-1.00 higher. Heifers were mostly 50 cents higher and cows firm to 50 cents higher. Bulls were mostly 1.00 higher.

Fed cattle prices advanced even in the face of a generally unresponsive trade on carcass beef at the wholesale level through mid-week, with the main stimulation supplied by moderate marketings. However, late trading was selective with demand usually confined to immediate requirements. The available steer supply was further reduced by an aggressive feeder demand which returned nearly 2000 head to the feedlot for further finish as future prices made hedging advantageous. The overall finish of the steer and heifer supply was particularly attractive with a large

percentage good to average-choice, and many cattle carried a considerable coating of mud. Slaughter steers made up approximately 33 pct. of the week's total and heifers 32 pct. cows comprised 11 pct and feeders 22 pct, most of these fleshy two-way steers.

**STEERS:** Several loads Choice and Prime 3-4 1122-1253 lbs. 67.50-68.00 during week. Choice 2-4 1000-1275 lbs. ranged 65.75-67.50, many sales 66.00-67.00, some mostly Choice very muddy 65.00-65.50. Mixed Good and Choice 2-3 1000-1250 lbs. 64.50-66.00. Good 2-3 60.50-64.50.

Average of LS-214, detailed quotations for Choice 900-1100 lbs. steers this week 66.38; Choice 1100-1300 lbs. 66.52. Average weight steers for three days 1150 lbs. as compared 1134 lbs. previous week. Average weight heifers for three days 988 lbs. as compared 974 lbs. previous week.

**HEIFERS:** Five loads and part loads Choice and Prime 3-4 898-1053 65.25-65.50. Choice 2-4 900-1075 lbs. 63.75-65.00, some mostly Choice very muddy 63.00-63.50. Mixed Good and Choice 2-3

850-1050 lbs. 62.50-63.75. Good 2-3 59.00-62.50.

**COWS:** Utility and Commercial 2-4 51.50-53.50, few 54.00. Cutter 50.00-52.00. Canner and Low-Cutter 46.50-50.50.

**BULLS:** 1-2 1400-2100 lbs. 60.00-68.00, few individual 1 69.00-70.00.

**FEEDERS:** Fleshy two-way steers 50-1.25 higher. Few lots Choice 956-1063 lbs. 66.75-67.25. Large volume 920-1120 lbs. 65.35-66.50, some Good and Choice 64.00-65.00.

## New Holland Horse

New Holland Sales Stables

Monday, February 26

Reported receipts of 354 horses, mules and ponies. Market stronger than two weeks ago.

Local work horses, singles 950-1115, pairs 1800-2250; driving horses 325-950; riding horses 275-400; better horses 425-775; lightweight killers 275-475; heavyweight 500-660; mares 20-60; colts 5-20; geldings 20-55; larger ponies 100-250.

THE

# ALASKA WOOD BURNING STOVE AND FIREPLACE

(A Modern American Version of a Canadian Step Stove)

- \* Heating One Room Or Entire Home.
- \* 9 Handsome Models Sand Blasted Finish.
- \* Chrome Trimmed.
- \* Hot Air Unit Available.
- \* Lifetime Guarantee.

- \* Construction - 1/4" & 3/16" steel boiler plate, firebrick lined-extra cast iron door greater efficiency. Baffle plate-lower stack temperature.

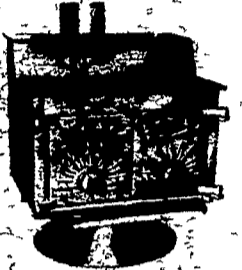
Cost Less Built Better

Don't let anyone tell you a baffle system isn't important!

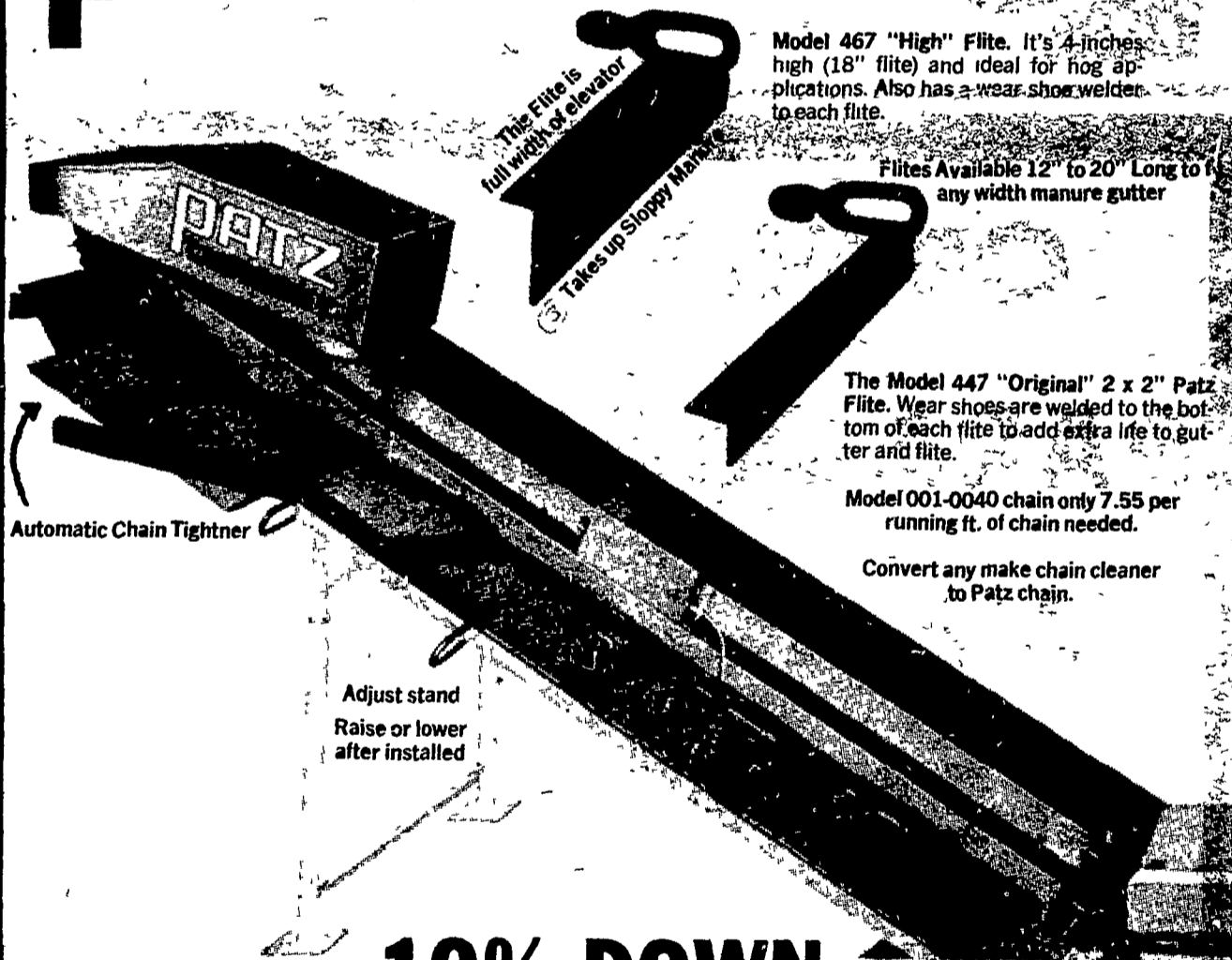
Showroom at Home Closed Week of March 12-17 Will be at Lancaster Builders Show in Gimbel's Mall Park City Lanc.

STORE HOURS:  
Closed Mon. and Tues.  
Wed. thru Fri. 10 to 8  
Sat. 10 to 4  
Other hours by appointment

CHESTER B. NOLT (Dist.)  
24 S. Hershey Ave.  
Bareville  
Leola, Pa. 17540  
Phone (717) 656-6898



# PATZ BARN CLEANER



ALL PATZ EQUIPMENT

ONLY **10% DOWN** ORDERED BEFORE MARCH 15th, 1979. (Date of Price Increase) WILL HOLD YOUR ORDER. MUST BE SHIPPED BY JUNE 5th, THEN YOU HAVE 6 MONTHS AFTER SHIPMENT TO PAY BALANCE OR WHEN INSTALLED, IF SOONER.

Why put up any longer with that old barn cleaner when only 10% Down and only \$90.00 per month for 3 years, on approved credit, buys a new Patz complete with new unit, 20 ft. elevator and 235 ft. of chain for average 40 cow barn.

Above Deal Only At

## MARVIN J. HORST

1950 S. 5th Ave. (Iona on 897) Lebanon, PA Phone 717-272-0871

SERVING THE FARMERS FOR 105 YEARS



HAMBURG SAVINGS and TRUST COMPANY

Hamburg, PA — Phone: 215-562-3811  
A FULL SERVICE BANK