

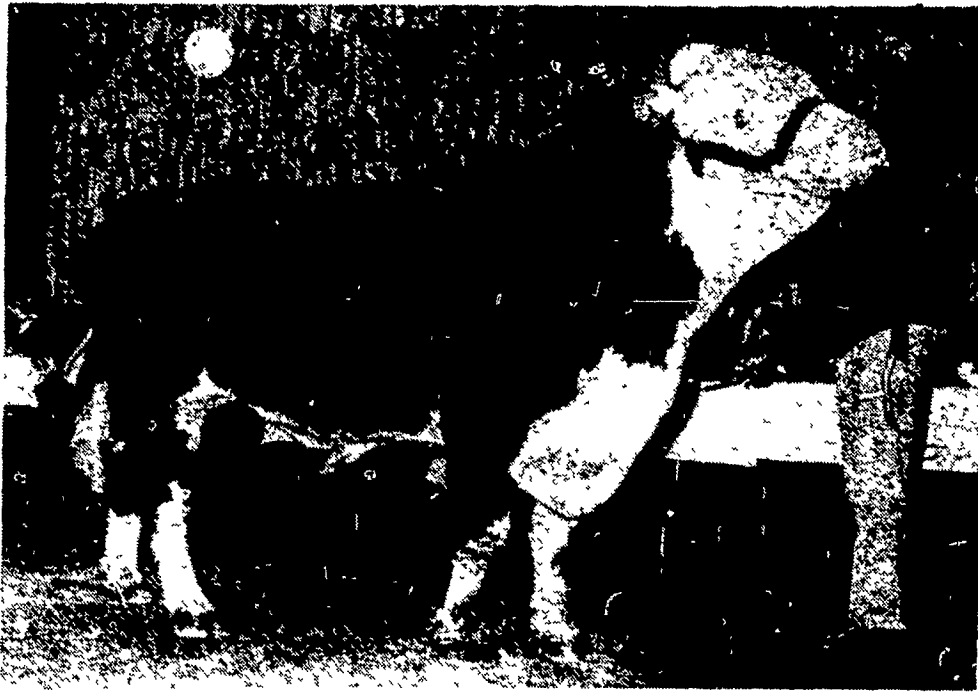
# Festivities highlight Adams Co. Beef Ball

By KENDACE BORRY  
GETTYSBURG — Cindy Leonard and the parade of bulls shared the spotlight last Saturday night at the third annual Adams County Beef Ball. The event was sponsored by the Adams County Beef Producers Association, Inc.

As part of the festivities, the sixteen-year-old Gettysburg miss, the daughter of Mr. and Mrs. B. C. Leonard, Black Horse Tavern Farm, was crowned queen by president of the organization, Leo Spenla.

The dark-haired young lady told her audience that she hopes to promote the beef industry in Adams County, with one of her big responsibilities to be attending farm-city week, to be held at Carroll Valley.

She stated that she had raised and fed cattle on her parents farm, who raise Registered Angus beef. She



Master Future One, owned jointly by Calumar Farms, JDH Polled Herefords, and Spring Bottom Farms, graced the Adams County Beef Ball with his presence, representing the Polled Herefords.

Next came a Polled Hereford bull, Master Future One, owned jointly by Calumar Farms, C. J. Furlong, Portage; JDH Polled Herefords, John Hausner, Dover; and Spring Bottom Farms, Frank Darcey, Jr., Fairfield.

The final entry into the limelight was a Limousin bull, Keystone Boy, shown

by Paul Heffner, of Biglerville.

Leo Spenla commented on those bulls presented and the other breeds, the Angus, Charolais, Santa Gertrudis, and Simmental, that are used in the Adams County area.

"These bulls represent men's hopes and dreams as

(Turn to Page 27)



Named the Adams County beef queen was Cindy Leonard, Gettysburg. Presenting her with her crown at the recent beef ball is Leo Spenla, president of the Adams County organization.

hopes to go to college and study social work, upon her graduation from Gettysburg Senior High School. She added that her older brother Lee, who is 17, had been active in showing sterris in 4-H work.

One of her first responsibilities was to announce the parade of bulls. While the

200 plus people watched, the restaurant doors opened, and in came the real stars of the evening's activities.

The first animal to be seen was a horned Hereford bull, the champion at the 1979 Farm Show, known as C.O.D.; exhibited by Pigeon Hill Farms, Terry Shearer, Abbottstown.

## CREUTZBURG, INC.

### QUALITY LIVESTOCK SUPPLIES

★ OPEN DAILY - 8:00 TO 5:00  
SATURDAY - 8:00 TO 12:00  
OWNER: HARRY E. LANDIS

ALL PRODUCTS AVAILABLE BY MAIL

Send For FREE Catalog

## CREUTZBURG, INC.

Lincoln Highway East, Box 7, Paradise, Pa. 17562  
(717) 768-7181

NAME \_\_\_\_\_

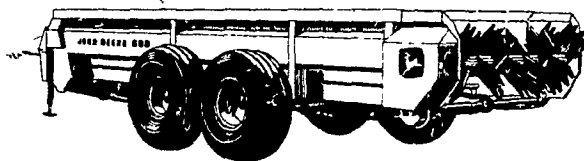
STREET \_\_\_\_\_

CITY \_\_\_\_\_

STATE \_\_\_\_\_

ZIP \_\_\_\_\_

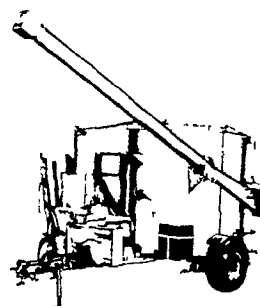
## 400-bushel capacity



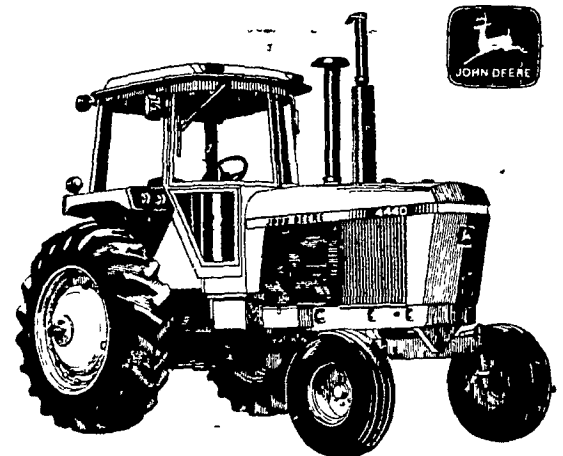
Introducing the John Deere 680 Spreader. Its 400-bushel capacity makes it the biggest spreader we have ever engineered. And most likely one of the largest you'll find anywhere. You'll like the hydraulic shift control and lifetime-warranted all-steel sides. You'll also appreciate the fully hinged shielding and tandem walking-beam wheels, too. Stop in to visit with us about the 680 Spreader.

## Grind rations fast, blend 'em uniformly with grinder/mixers built for tractors over 100 hp

100 hp? Try 155 hp—that's the kind of capacity you'll find in the John Deere 700 and 750 Grinder/Mixers. It reflects the truly big-job machines in the field. Uniform mixing, capacity to spare, long life - in grinder/mixers that's John Deere.



## 130-hp 4440



## A powerful response to your working needs

The 4440 packs a real wallop with its 130 horsepower. Maybe more than you expect. Because as impressive as 130 horsepower is, that amount of power has never been delivered more effectively than it is by the 4440. It has a terrific torque response from its 466-cu.-in. turbocharged engine. And the whole chassis is designed to magnify power at every point, including the drawbar, PTO, 3-point hitch, and hydraulic system. Stop by the store for more information on the powerful 4440.

### WHY?

SHOULD I CONSIDER A FARM DRAINAGE INVESTMENT FROM COCALICO EQUIPMENT CO. **BECAUSE**

THEY ARE LAND IMPROVEMENT SPECIALISTS USING ALL S.C.S. APPROVED MATERIALS

Call 215-267-3808

ASK ABOUT THEIR LASER BEAM GRADE CONTROL DRAINAGE MACHINE



## Drainage Pays High Returns

| Investment     | Typical Annual Return |
|----------------|-----------------------|
| Land Drainage  | 21-46% (d)            |
| Farm Buildings | 3-23% (d)             |
| Farm Land      | 11% (e)               |
| Stocks         | 7.4% (e)              |
| Bonds          | 6.1% (e)              |

### COMPARE

Even with the conservative figures shown above, it's obvious that land drainage should top farmers' lists of investment priorities.

## COCALICO EQUIPMENT CO.



DRAINAGE & EXCAVATING  
RD #3, DENVER, PA. 17517  
(215) 267-3808

### LANDIS BROS. INC.

Lancaster, PA  
717-291-1046

### ADAMSTOWN EQUIPMENT INC.

Mohnton RD2, FA 19540  
(near Adamstown)  
215-484-4391

### PIKEVILLE EQUIPMENT INC.

Oyster Dale Road  
Oley RD2, PA  
215-987-6277

### NEUHAUS'ES INC.

RD2, York, PA  
I-83 Loganville Ext. 3  
717-428-1953 cr  
235-1306

### SHOTZBERGER'S EQUIPMENT

Elm, PA  
717-665-2141

### A.B.C. GROFF INC.

New Holland, PA  
717-354-4191

### ROBERT E. LITTLE INC.

Zieglerville, PA  
215-287-9643

### STANLEY A. KLOPP INC.

Berrville, PA  
215-488-1510

### KERMIT K. KISTLER INC.

Lynnport, PA  
215-298-3270

### M.S. YEARSLEY & SONS

West Chester, PA  
215-696-2990

### AGWAY INC.

Chapman Equipment Center  
Chapman, PA  
215-398-2553

### I.G.'s AG SALES

Silverdale, PA 18962  
215-257-5136