

Holstein Assn. has new sire evaluation method

BRATTLEBORO, Vt. — A new procedure for summarizing type data in bull proofs will be implemented by the Holstein Association according to Zane Akins, executive secretary of the Association.

Beginning with volume II of the Registered Holstein Sire Summaries, the Association will introduce its new, improved sire evaluation procedures, Akins, announced.

A method known as Best Linear Unbiased Prediction (BLUP) has been selected as a superior measurement for a bull's transmitting ability for overall type (PDT). BLUP was tested and compared by researchers from Virginia Polytechnic Institute and the U.S. Department of Agriculture.

Akins said that researchers who have been testing Holstein type evaluation procedures have found the primary advantages of BLUP to be these:

BLUP procedures reduce the rate of error due to herd differences far more than other methods tested.

BLUP gives a wider range of PDT values than present procedures. The present method has a range of about -2.00 to +2.00, or four points,

BLUP allows a six point spread from approximately -3.00 to +3.00.

BLUP favors better sires. Many great sires have been underestimated because they were used in genetically superior herds.

BLUP procedures also stabilize PDT values from one sire summary to the next.

BLUP procedures substantially improve pedigree prediction.

BLUP procedures will also take into account the genetic level of herd mates, the competition level of sires being evaluated.

BLUP is ideally suited to analyses of linearized traits, type evaluation advancement currently being researched in a joint project by the Holstein Association and the National Association of Animal Breeders (NAAB). Linearized trait is a scientific term for putting values on the descriptive codes so that they can be measured and analyzed more like milk production and final score.

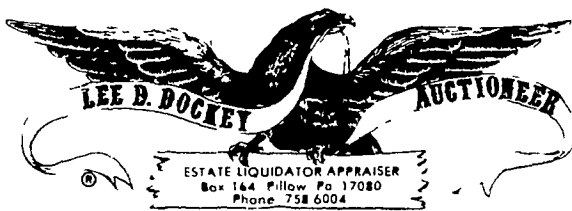
"The ability of BLUP procedures to account for systematic differences among sires which are known to bias sire evaluations, makes it an

extremely accurate evaluation method," Executive Secretary Akins said.

In making the announcement, Akins said the Holstein type data will be summarized twice each year, rather than the previous four times per year. Holstein sire sum-

maries and individual sire summaries will be published to correspond with USDA production summaries.

The Holstein Association board of directors, last November, authorized the use of BLUP procedures for calculation of PDT values in 1979.



PUBLIC SALE OF ANTIQUES & COLLECTIBLES WEDNESDAY, MARCH 21

10:00 A.M.

Located at Lykens Valley "SHOP AND PLAY" Hall, Route 209, Lykens, Pennsylvania. Will be selling an accumulation from three generations of the Prichard Family of Ashland, Pennsylvania. To be sold to the highest bidder without reserve.

FURNITURE

2-Pc. Walnut Marble Top Bedroom Suite; Walnut Marble Top Square Stand; Walnut Marble Top Sideboard with Orante Top; Walnut Marble Top Dresser; Walnut Top Washstand; Walnut East Lake-Style Bookcase, Triple Section with Drawers Below; Walnut Bookcase with Drawer in Base; Very Unusual Brass and Iron Hall Rack; 3-Pc. Victorian Living Room Suite; Bamboo Sewing Stand Plus Other Bamboo Stands; Soft Wood Combination Desk-Bookcase; Jelly Cupboard; Three and Four-Drawer Cottage Bureaus; Country Store Cupboard, 12 Pane Top, 4 Drawers in Base; Walnut Extension Table; Assortment of Blanket Chests; Assortment of Empire Chests of Drawers; Piano Stool; One-Drawer Soft Wood Stand; Selection of Wicker Items; Victorian Wardrobe; Two-Drawer Spool Cabinet; Kitchen Cabinet; 6-Legged Drop Leaf Table; Small Flour Bin; Plank Bottom Chairs; Assortment of Washstands; Many Oak Items such as Library Tables, Platform Rockers, High Chest of Drawers, Bachelor's Desk, Selection of Stacking Sectional Bookcases, Sewing Table, Medicine Cabinets, Sideboards, Chairs; Pedestal Stands, Extension Tables, Etc. NOTE: Some of the oak items have original Larkin labels on back.

DISHES

Covered Dish with Frosted Dove on Top of Lid; Flint Glass Cup Plates; Stiegel-Type Bottle with Floral Decoration; Selection of Depression Glass, Milk Glass, Souvenir Glass; Carnival Glass, German China, Pressed Glass, Opalescent Glass, Limoges China, Goofus Glass; 1911 Calendar Plate; Assortment of Salt Dips; Etc.

MISCELLANEOUS ITEMS

Lg. Selection of Larkin Items in Original Boxes; Larkin Books; Postcard Albums; Tiffany-Type Table Lamp; Lg. Selection of Early Advertisement Calendars such as Grand Union Tea Co., Larkin, Etc.; Hanging Hall Light; Metal Sewing Bird; Butter Print; Tin Wind-Up Toys such as Dog, Roosters, Etc.; Blue Decorated Crock; Selection of Advertisement Tins; Brass Bucket; Lg. Doll with Bisque Head Plus Other Dolls; Sulphide Marble; Box of Assorted Old Clothing; Old Reading Cone-Top Beer Cans; Planter's Peanut Jar; Confirmation Certificate Dated 1847 in Early Frame; Beaded Purses; Student Lamp Base; McHenry & Son Whiskey Jug; Redware Crocks; Spatter-Type Crockery; Hull Pottery, Iron String Holder; Unusual Kerosene Heater, Brass Candlesticks, Wallace Nutting Print, Butcher Ladle; Photo Album; Quadruple Plate Items; Assortment of Picture Frames and Early Books

FOR COMPLETE CATALOG SEND NAME, ADDRESS AND STAMP TO AUCTIONEER. TERMS: Cash, Travelers or Certified Check. Personal checks accepted only from persons having an established account with Auctioneer.

SADIE J. SCHAFFHOUSER

Owner

DOCKEY AUCTIONEER

FARM MACHINERY & HOUSEHOLD AUCTION

6 TRACTORS & HAY EQUIPMENT SATURDAY, MARCH 3

At 9:00 A.M. Sharp

For Rudy Hoernlen, Rt. 206 1 miles South of Chester, N.J. Blizzard date Mon., Mar. 5, 1979 at 9 A.M.!

9 A.M. - Household

12:00 Noon - Tool house and construction related items. Homelite jack hammer, chain saw, 1 1/2" water pump, 36" concrete finishing machine, American hyd. self controlled wood splitter new, truck and tractor chains, shovels, wheel barrows, used tin roofing, space heater, ext. ladders, hanging meat scale. Attention - 1965 Lincoln Continental 4 Door A-1.

Farm Machinery - 6 Tractors - IHC 706 gas, IHC 560 gas, IHC 2444 w/#2000 hyd. loader (900 hrs. reverser 3 PTH loaded A-1), Farmall H. J.D.A., late model Crawler Dozer IHC T 4 top condition 3 PTM and PTO! Following is all International equip. - #435 hay baler w/kicker 8 mo. old, #430 baler w/kicker, Beacon sprayer for baler, Attention 9 ft. 990 haybine (new), used 990 haybine, #14 hay rake, silage blower, 2 PTH 3 btm. plow, 2-7 ft. balanced head hyd. mower, 2 PTH 7 ft. mower, 2 PTM scarifier. Other makes - JD 5 ft. flail chopper, JD PTO hopper blower, 40 ft. elevator w/corn drag. Attention - 2 Danco kicker hay wagons 8 mos. old, metal sides on H.D. gear 4 - A1 wooden sides on Grove gear kicker wagon. All Equipment has been owner used only and is in top condition! Plan to attend this Auction! Owner & Auctioneer not responsible for accidents.

Terms - Cash or Good Check with Identification Paid in full Sale Day!

Owner
RUDY HOERNLEN
Chester, N.J.
201-879-5032

Sale by:

Col. Fred R. Daniel Auctioneers, Inc.
Neshanic Sta., N.J. 201-369-4784
Lunch Available!

PUBLIC SALE SATURDAY, MARCH 3

10:00 A.M.

Located 5 miles east of Mifflintown, Juniata County. Sale sign along old route 22 at Legion Bldg. in Mifflintown.

HOUSEHOLD ITEMS & TOOLS SELLING 10:00 A.M. MACHINERY 12:00 NOON

McCormick F 30 tractor on steel; JD 14 T. baler w/motor; Frick 22" threshing machine; 6 ft. #9 McCormick mower, wide traction; McCormick 7 ft. gram binder; #10 A manure spreader, A1; McCormick corn binder; baler cart w/hill hitch; hyd. unit; 7 1/2 hp. Deutz w/hand clutch; Lehigh compressor 2 open buggys; 1 top buggy; 1 spring wagon; Stauffer stainless steel 10 can cooler; other farm machinery & farm related items.

5 DRAFT HORSES - 1:30 P.M.

Team gray Percheron geldings, (5 yrs. old), w/size & quality, don't miss team; gray Percheron Filly, (2 yr. old); sorrel Belgian mare, 8 yrs. old (eligible); sorrel gelding, 9 yrs. old.

40 REGISTERED HOLSTEINS 2:00 P.M.

Vacc.-30 day health tests, consisting of 27 bred heifers, 3 due Mar. 1, May 13, July & Aug. 10, Sept. & Oct.; 11 open heifers from yearlings down to 6 mo. Sired by some of the top A.1. bulls, including Elevation, Astronaut, Jet Stream, Job, Tippy, Fury Ivan, Bronson, etc. Most of the dams have good records. 1 Service age bull & service sire for a good number of the bred heifers, sired by Elevation from an 800 Kingpin dam. 1 bull 6 mo. old by Kingpin from an Elevation with 16,359M as a 2 yr. old A very outstanding group.

WRITE OR CALL FOR CATALOG.

CATTLE SALE IN TENT

TERMS: CASH OR GOOD CHECK.

LUNCH & BAKE SALE

LEROY S. YODER, JR.
R.D. 2, Box 309
Mifflintown, Pa. 17059

Lyter & Son, Clerks
Naugle Pedigrees.
Long Bros. Aucts.
Port Royal, Pa.
R.D. 1, 17082
PH 717-527-4458

LARGE PUBLIC SALE

FARM EQUIPMENT, SHOP TOOLS, 50 HEAD, FEEDER STEERS, FEED SATURDAY, MARCH 10

9:00 A.M.

Located in Cumberland County, Pa. 3 miles south of Carlisle, and 5 miles north of Dillsburg, Pa. along Route 74 the following:

TWO TRACTORS

I-806 diesel, wide front, 3 pt., fully eqmpt. with excel. cab M.F. 65 gas with 200 industrial loader and heat houser, White 5-16" bottom plow w/automatic reset.

HAY EQUIPMENT

Oliver 720 baler w/thrower, N.H. 451-7 mower. Oliver roll bar rake, Case side rake, Hesston #10 stacker, Hesston mower, three bale wagons, Gehl, Huskee & Zimmerman, Huskee 6 ton wagon w/flat, two elevator N.H. 32 Ft., utility 20 ft. both w/motors.

FORAGE WAGONS

Gehl and Kaston, Rufeeder 20 ft. wagon w/metal box & auger, 8 ton elec. wheel wagon, Gehl blower & pipe, Int. #16 harvester.

PLANTING EQUIPMENT

AC 6 row no till corn planter w/fertilizer auger, Monitor and GAndy herbicide applicator in ex. cond. and AC planter trailer, Oliver 13-7 disc drill on rubber, Century 300 gal. fiber glass trail sprayer, Starline tank spreader, Badger single beat spreader P.T.O.

50 HEAD FEEDER STEERS & FEED ANGUS, CHAROLAIS, HEREFORD, 500 LB. to 700 LB.

PORTABLE LOADING CHUTE SOME HAY, STRAW & ENSILAGE MISCELLANEOUS

Speedaire portable air compressor, Lincoln 2 1/2 welder wood saw mangle w/blade, stock water, 5' 11 on water trough, 3-12' farm gates, twin iron frame kettle furnace apart, shovel plow, baler twine, new and used car and equipment tire, slab stove wood, 50 & 85 lb milk cans, fireplace and iron, 13-22 ft. telephone poles, lumber Shop w/many assorted tools, etc. Note a real lot of equipment and very nice feeder cattle.

NOT RESPONSIBLE FOR ACCIDENTS TIME OF SALE

LUNCH STAND RESERVED

TERMS: CASH OR APPROVED CHECK BY OWNER

GALEN C. BYERS,

Owner

R D. Carlisle, Pa.

Phone 243-5768

Clair R. Slaybaugh, Auctioneer
Phone 677-7479

C. L. Jacobs, Clerk