

# WHAT'S NEW



### STACK MOVER

Sterling Mfg. & Supply Company, of Sterling, Kansas, announces the production of the Sterling Stack Mover.

Designed for use on any size hay operation, the stack mover is available in 28 and 40 foot models, carrying from one to three average size stacks.

A unique feature of the stack mover is the all electric control unit, operated from the truck cab. The unit is easily removable for service and safekeeping, says the manufacturer.

Other standard features include brakes, lights, turn signals, tiedown eyes, and four 12 by 16.5 10-ply tires.

The powerful 20 horsepower Onan engine is housed in a high strength steel safety enclosure. Five steel loading chains provide uniform movement and speed of the stack during loading and unloading, aided by two 2½ by 16 hydraulic cylinders to lift the frame. Two rear tracks

hydraulically move the stack mover back, as the loading chains pull the hay stack forward.

For more information contact: Sterling Mfg. & Supply Co., Sterling, Kansas 67579, (316) 278-2579.

### COMPACT TRACTORS

Massey-Ferguson is developing a new dimension in versatile, compact tractors with the introduction of six additional machines.

All six are designed to meet two distinct and increasingly important uses for tractors in the smaller size range. One is in farming applications, particularly by fruit, vegetable and poultry operators — as well as by the growing numbers of weekend and sundown farmers.

These six compact tractors equally meet the needs of most industrial, landscaping, nursery and grounds maintenance users, says the manufacturer.

The new line features high cubic-inch-displacement diesel engines ranging from 20 to 31 engine horsepower (16 to 26 pto hp). Three of the six are among the few four-wheel-drive machines available in North America in this power range.

The six tractors are the 20-hp MF 205, the 25-hp MF 210 and the 31-hp MF 220 plus their four-wheel-drive counterparts, the MF 205-4, the MF 210-4 and the MF 220-4.

The MF 210 and MF 220

two-wheel-drive tractors feature adjustable, swept-back front axles as standard equipment. The other four models have standard axles. Differential locks and both hand and foot throttles are standard.

All models are equipped with a 540-rpm, transmission-driven rear PTO with overrunning clutch. Front PTO capability will be available on all models.

The new small tractors feature large-capacity hydraulic pumps. These provide position control for the hydraulic linkage on the MF 205 and MF 210.

cess for engine maintenance. Overall engine access is provided by the forward-tilting hood which completely clears the engine area.

reverse and four forward speeds with a three-speed unit — for a total of 12 forward and three reverse speeds. The MF 205 has three forward and one reverse in two-speed ranges for a total of six forward and two reverse speeds.

The MF 210 and MF 220 transmission has one

The MF 220 comes with both position and draft control as standard equipment assuring positive weight transfer control for all mounted equipment. A full line of such equipment will be available from MF dealers.

A large 7.1-gallon (U.S.) fuel tank, mounted behind the engine, provides easy ac-

## HIGH PRESSURE WASHING

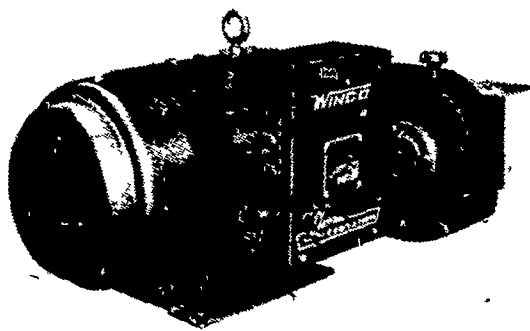
OF POULTRY HOUSES AND VEAL PENS

**BARRY L. HERR**

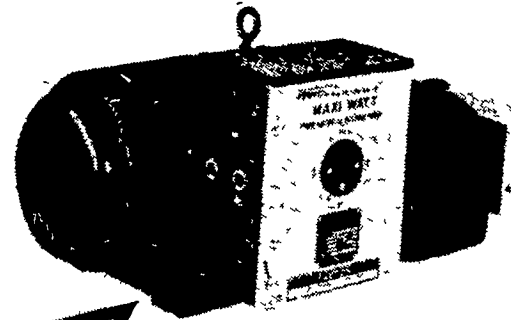
1744 Pioneer Road, Lancaster, Pa.  
Phone: 717-464-2044

## INTRODUCTION SALE, 1979 MODELS OVER 50 IN STOCK

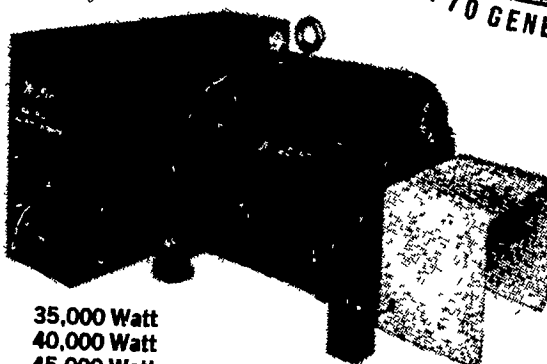
# WINCO



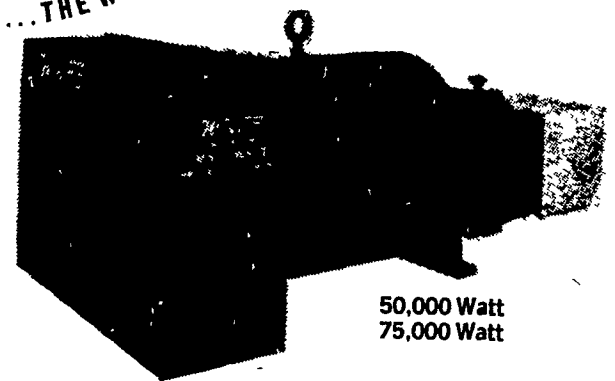
15,000 Watt



25,000 Watt

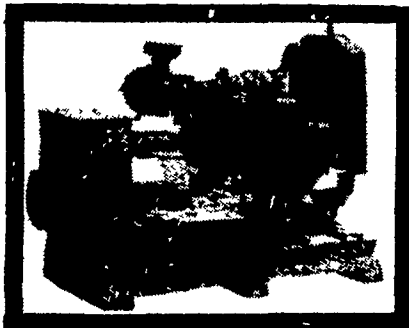


35,000 Watt  
40,000 Watt  
45,000 Watt



50,000 Watt  
75,000 Watt

Over 40 Automatics In Stock 15-500 KW  
Over 100 Portables In Stock 1.5-12.5 KW



## MAXI



## POWER

### USED PTO UNITS

1 Winco 12 KW	25 KW Fidelity w/shaft & trailer (like new)
1 Winpower 12/20 KW w/shaft	12 KW Int. 2 bearing
1 Katolight 15 KW w/trailer	Winco 5300 watt 2 bearing
1 Marpac 16 KW w/shaft & trailer	
12 KW Int. w/trailer and shaft	

# LEONARD MARTIN CO.

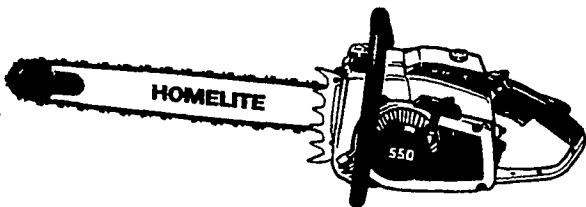
330 FONDERWHITE RD., LEBANON, PA 17042

717-274-1483

## 'WE HAVE MADE'

A  
**SPECIAL PURCHASE**  
OF

**The 550  
Homelite's Newest  
Pro Saw**



Introducing one of the best all-around pro saws ever designed Homelite's 550 is loaded with high-performance features to handle most production-cutting jobs

- Super CD Ignition for fast starts in any weather
- 5 vibration isolators reduce operator fatigue
- Automatic chain lubrication with manual override reduces chain and bar wear
- Exclusive Softone™ muffler uses dual chambers to soften noise and cool exhaust gases
- Hemi-head combustion chamber provides more horsepower with better fuel economy
- Replaceable fuel filter for easy on-site maintenance
- Diaphragm carburetor provides full power in any cutting position
- Large fuel and oil tanks allow operator to work up to 45 minutes without refueling
- Guidebar lengths from 16" to 36" provide versatility for every cutting job

Homelite the name you know for the power you need

Reg. - \$481.00 with 24" SP Bar & Chain.  
Sale - \$381.00 with 24" SP Bar & Chain.  
Save - \$100.00 While Supply Lasts.

ONLY AT:

**A&B Sales & Service**

Rt. 772 E. of Rt. 23  
Ronks, PA. 17572  
717-656-9048