

WHAT'S NEW

80,000-Watt PTO Alternators

Winpower Corporation has introduced two new 80,000-watt tractor driven alternators designed to provide emergency standby electrical power for a variety of

farm and remotely located electrical systems and equipment. The Model 80/50 PTO units will deliver 80,000 watts for the first five minutes and 50,000 watts of continuous power, enough to start and run a 50 hp combination motor. A self regulating feature automatically adjusts voltage to match the load. A laminated silicon steel armature is designed to provide lasting, troublefree performance.

The new Winpower models, powered via 540 or 1000 rpm tractor PTO, feature an easy to connect PTO drive mechanism. Each unit has a drip proof control box with four circuit-breaker-protected receptacles on each model to provide 240-, 240/120-, and 120-volts, respectively.

The 80,000-watt models feature a "Safe Range" voltage indicator readable from the tractor seat. The models, available with an optional two-wheel trailer for remote location use, are designed to power farm feed and water systems, milking machines and cooling equipment, heating and ventilating systems for confinement buildings, household equipment and other electrical systems.

In addition to its line of 12,000 to 150,000-watt tractor driven alternators, Winpower also manufactures 1.5 to 500 KW air and liquid cooled engine driven generators. Winpower is headquartered in Newton, Iowa, U.S.A.

30,000-WATT PTO ALTERNATORS

Winpower Corporation has introduced a new four unit line of 30,000-watt tractor driven alternators designed to provide emergency standby electrical power for a variety of farm and remotely located electrical systems and equipment. The Model 30/20 PTO units will deliver 30,000 watts for the first five minutes, and 20,000 watts of continuous power, enough to start and run a 20 hp combination motor. A self regulating feature automatically adjusts voltage to match the load. A laminated silicon steel armature is designed to provide lasting, trouble-free performance.

The new Winpower models, powered via 540 or 1000 rpm tractor PTO, feature an easy to connect PTO drive mechanism. Each unit has a drip proof control box with four circuit-breaker-protected receptacles on each model to provide 240-, 240/120-, and 120-volts, respectively.

The 30,000-watt models feature a "Safe Range" voltage indicator readable from the tractor seat. The models, available with an optional two-wheel trailer for remote location use, are designed to power farm feed and water systems, milking machines and cooling equipment, heating and ventilating systems for confinement buildings, household equipment and other electrical systems.

In addition to its line of 12,000 to 15,000-watt tractor driven alternators, Winpower also manufactures 1.5 to 500 KW air and liquid cooled engine driven generators. Winpower is headquartered in Newton, Iowa, U.S.A.

SKID STEER LOADER

A new compact skid steer loader from Gehl, the diesel-powered 2800, now offers an

alternative to the 2600 gasoline engine model.

According to product manager Jack Lathers, "The 2800 and 2600 compact models are identical except for the engines."

Like the 2600, the 2800 model features full hydrostatic drive for fast and smooth loading. Specifically designed for small farm applications, this compact loader (50 inches wide with standard tires) fits through narrow doorways and saves storage space. T-bar controls allow total hand operation - no foot pedals or levers. This facilitates maneuverability, especially in tight places.

The 24.5 horsepower diesel engine and 800 pound SAE operating capacity gives this compact model the power for most loading and moving jobs, says the manufacturer.

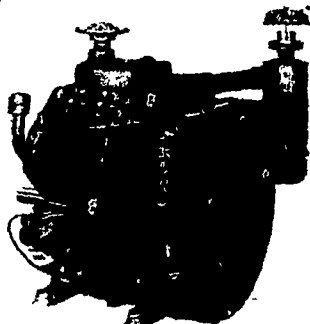
Capacity matched attachments include a variety of buckets, manure and pallet forks. And the quick-switch attachment system allows changeover in minutes.

For more information on the new Gehl 2800 skid steer loader, contact Jack Lathers, product manager, Gehl Company, West Bend, Wisconsin 53095.

HAVE YOUR ENGINE REPAIRED NOW, DON'T WAIT TILL SPRING!!



WISCONSIN ENGINES

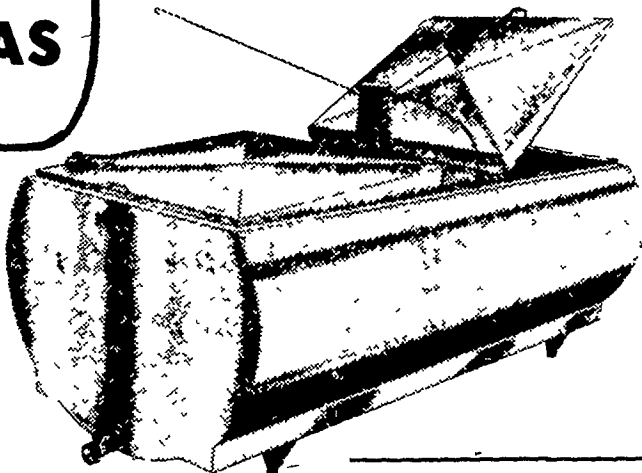


NEW & USED SALES AND SERVICE

SALES & SERVICE MILLER'S REPAIR

1 Mile North of Bird-in-Hand
8 miles East of Lancaster
RD1, Bird-in-Hand, PA Phone 717-656-9013

MAKE ME A BULK MILK COOLER THAT HAS EVERYTHING!



MUELLER Bulk Milk Coolers

THE MUELLER MODELS OH, MHL, AND MW WITH HIPERFORM MAKE ALL OTHER BULK MILK COOLERS OBSOLETE

SEE THE MUELLER NEW MODELS

★ 500 MW ★ 600 MW

The "MW" is one of the Lowest pouring Height Bulk tanks. Check with us all the new features of the "MW" bulk tank.

If you are in the market for a bulk milk cooler and you don't check all the advantages of the Mueller "OH" "MHL", and "MW" you may be buying an obsolete cooler.

USED TANKS

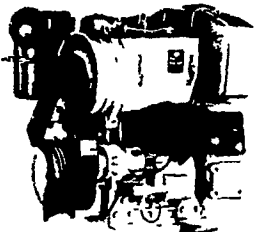
600 gal. M ~~SOLD~~
300 gal. Muell ~~SOLD~~
375 gal. DeLaval
500 gal. Milkeeper

350 gal. Esco
425 gal. Esco
500 gal. Mojonnier
600 gal. Mojonnier

400 gal. Dari-Kool
D-2 600 gal. Girton
D-2 400 gal. Girton
500 gal. Wilson

800 gal. Jamesway
2-400 gal. Jamesway
500 gal. Jamesway

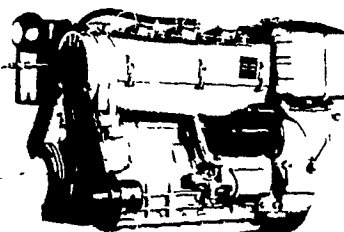
ASK US TO SEE A **MUELLER PRE HEATER** IN OPERATION, RIGHT ON THE FARM.



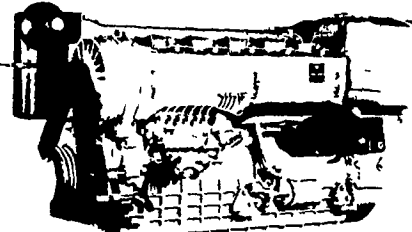
2800 R.P.M.
44 SAE HP
40 DIN HP



2800 R.P.M.
66 SAE HP
60 DIN HP



2800 R.P.M.
88 SAE HP
80 DIN HP

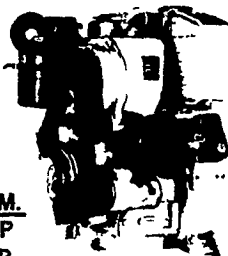


2800 R.P.M.
132 SAE HP
120 DIN HP



1050 SU SERIES

2800 R.P.M.
22 SAE HP
20 DIN HP



FOR MORE INFORMATION ON HIGHER H.P. - CALL US! -

USED DIESELS

- (4) SR2 Lister
- (4) DVA 1500 Slanzis
- 1 - ST2 Lister

THE "RIGHT FROM THE START" DIESEL ENGINE LINE FOR FAULTLESS PERFORMANCE.

QUEEN ROAD REFRIGERATION

Box 67, Intercourse, PA 17534
Phone: John D. Weaver - 717-768-9006 or 768-7111
or Answering Service - 717-354-4374

24 HOUR SERVICE