

## Estate meetings scheduled

LANCASTER — In an effort to help farmers better understand the laws dealing with estates and the steps taken in farm transfers, two meetings have been scheduled by the Lancaster County Extension Service.

On February 22, at 7:30 p.m., Fred Hughes, head of the farm management, Penn State, will cover the topic of Estate Planning, Wills, and Taxes, giving an update and review of laws governing estates for farm families.

On March 8, again at 7:30 p.m., Jesse Cooper, farm management specialist, Penn State, will speak on Farm Transfer Arrangements, reviewing father and son agreements, partnerships, contracts, corporation, installment sales and tax advantages obtained by a well planned program.



## Trees pruned now have minimum sap loss

FLEMINGTON, N.J. - Maple and dogwood trees are profuse "bleeders" when cut.

If you have any low-hanging branches to be removed or any other pruning that needs to be done on such trees, late January or early February is the time to do it with a minimum of sap flow, says New Jersey agricultural agent Robert E. Schutzki.

It is possible that no sap will flow at all if pruning is

done in severely cold weather. If this is the case, immediately apply a tree wound dressing that contains a fungicide or apply orange shellac. However, if the trees does "bleed", wait until the sap stops flowing before painting the wound.

There is some question among the experts of the merits of using tree wound dressing. If you decide to paint the wound, only those one inch in diameter or larger need to be painted.

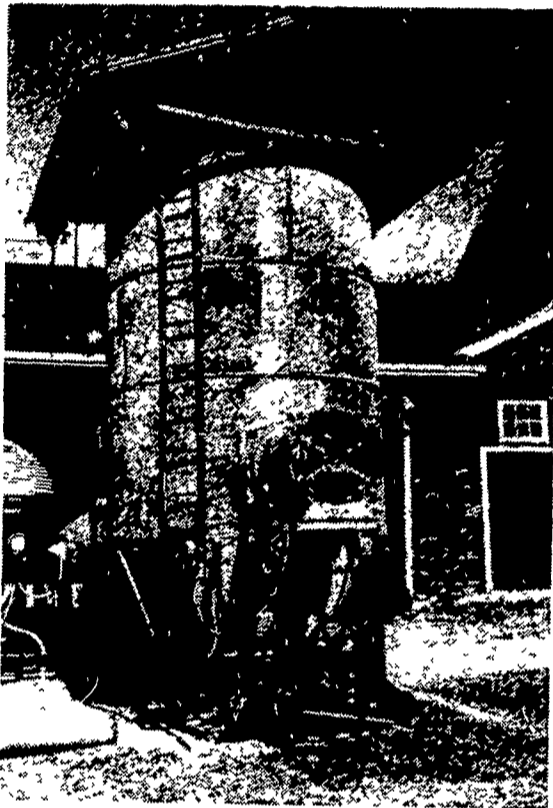
### Agencies named for grain inspection

NEW YORK - Nine state departments of agriculture - including those in Connecticut and Maine - have been named to perform official grain inspection services at inland locations, according to a U.S. Department of Agriculture official.

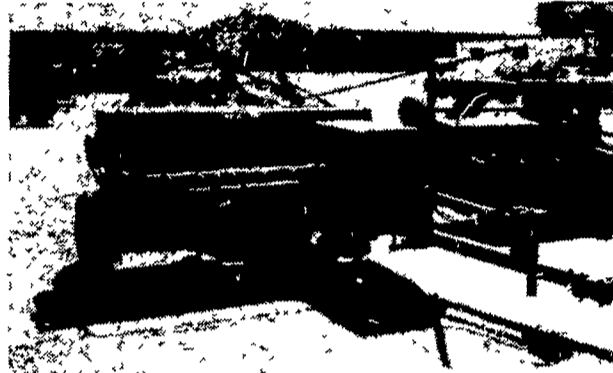
Persons wishing to comment on, or to obtain a map of the proposed areas of responsibility for a particular state should contact the FGIS Compliance Division, Room 2405 Auditors Bldg., USDA, Washington, D.C. 20250. Comments must be received by Mar. 29.

Leland E. Bartelt, administrator of the department's Federal Grain Inspection Service, said geographic areas also have been proposed for each of the states. He said each state

*Were Clearing 'Em Out -  
Come 'Em - Save!*

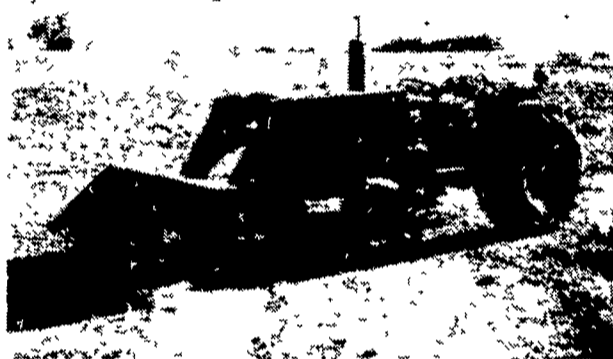


Meyer Morton 3 PTO Batch L **SOLD** \$2,500.



#### USED BALER

(2) JD 336 Baler w/#30 Thrower ..... ea. \$3,950.



#### USED TRACTOR

John Deere 1520 Gas w/New 143 Loader ..... \$6,250.

#### USED TILLAGE SPECIALS

Ford 4-18" Semi-Mount Spring Reset MF 720 Disk Harrow, 28 Blade, 26" Blades w/hyd cylinder 2,450.00  
Brady 9 tooth chisel plow 1,050.00  
JD KBA Disc 325.00  
Oliver Disc 9' 1050.00

#### USED GRAIN DRILLS

John Deere 17 x 7 \$750.00  
Co-op 15x7 Fert Grain Drill w/grass seed attach 750.00  
MF 21x7 Plain 1,650.00

#### USED HAYBINES

New Holland 479 \$2,750.00

#### USED PLANTER SPECIALS

Tag 11650 John Deere 1250- 6 Row Plateless \$2,350.00  
11941 John Deere 494A - 4 Row 650.00  
11934 John Deere 494A - 4 Row 950.00  
1229 Ford 4 Row 775.00

#### USED COMBINE SPECIALS

AC - C w/4 Row Corn Head 14' Platform \$6,750.00  
Cockshutt 427 w/Power Steering & 10' Platform 1,450.00  
MF 410 Diesel w/cab, 13' platform, 3 row N R corn head 8,250.00  
AC Model E w/10' platform, pickup reel, 2 row corn head, real clean 5,750.00  
JD 55 Corn Soybean Special 12' head 9,700.00

#### USED BALER SPECIALS

New Holland 67 Baler \$775.00  
John Deere 14T 750.00  
John Deere 14T w/ejector 450.00  
John Deere 24T 950.00  
John Deere 24T w/thrower 1,750.00  
New Holland 275 w/thrower 2,350.00

#### USED TRACTORS

MF 175 Diesel \$5,850.00  
JD 730 Diesel A **SOLD** 3,950.00  
Farmall H w/loader 1,150.00

#### USED HARVESTER SPECIALS

NH 880 2-row narrow row head 3,650.00  
NH 717 Single Row Head, 9 Knife Cutter Bar 1,795.00  
JD #12 w/single Row Head 150.00

#### MISCELLANEOUS

New Set 18 4x30 Snap on Duals w/New Goodyear 6 Ply Tires \$1,050.00

### SPECIAL SAVINGS FOR YOU

Planter and Tillage Tool Replacement Parts

February OVER-THE-COUNTER Sales

5% Cash Discount --- \$50.00 to \$100.00  
10% Cash Discount --- \$100.00 or More

### SPECIAL

Suit-Case Weights for John Deere Tractors \$39.50 Each



**Evergreen Tractor Co. Inc.**

30 EVERGREEN RD., LEBANON, PA 17042, PHONE (717) 272-4641

### STOLTZFUS MEAT MARKET RETAIL MEAT MARKET RIGHT ON THE FARM.

- FRESH CUT BEEF & PORK
  - FRESH EGGS RIGHT FROM THE FARM
  - ★ OUR OWN COUNTRY CURED HAMS, BACON and SWEET BOLOGNA
- Orders Taken For Beef Sides; Wrapped And Ready For Your Freezer.

OUR OWN BEEF RIGHT FROM THE FARM

**Attention Farmers:**  
We Do Custom Slaughtering For Your Freezer.

PH: 768-7166

Directions: 1 block east of Intercourse on Rt. 772

Reg. Hours: Thurs. 9-5; Fri. 9-8; Sat. 8-5

### GROW THE CORN THAT WILL GIVE YOU PROFIT MAKE YOU PROUD STEWART SX 77

ASK THE PEOPLE WHO DID,  
Like JOHN PEOPLES, Rising Sun, MD.

**THE TOP YIELD  
HEALTHY STALKS  
GRAIN OR SILAGE**

**STEWART SX 77**

THE HYBRID YOU CAN COUNT ON

PROVEN BY TWO YEARS OF USE  
BY CECIL COUNTY FARMERS.

Call PAUL ZACHARY, 658-5605  
or WARREN KNUTSEN, 658-4283  
Rising Sun, Md.