

# Tomato growers

(Continued from Page 15)  
for your crops can be banded."

He recommended banding fertilizer whenever possible. Sweet corn and snap bean suggestions were two inches to the side and two inches below the seed. Recommendations for tomatoes were to use double bands, four to six inches out on seeder plants.

Dr. Earl Meiser,

hydrogeologist, reported that Pennsylvania has recently developed a method of spray irrigation for high organic wastes with a minimum of pretreatment. "At first, 85 per cent of the biochemical oxygen demand (organic waste) needed to be removed. The same can now be achieved by spraying the organic waste on a field of cover crop.

Meiser said there were two

objectives when field spraying. You can not spray more than a field can take, and the waste should be treatable. The purpose of the cover crop, as an example, grasses, is to decrease the surface run off. With seasonal application the fields can be harvested. In Pennsylvania, DER has certain criteria that must be followed in order to spray. There is a limit to a four per cent slope, with permanent sod cover the limit is a eight percent slope. In a forest area, a 14 per cent slope is allowed. It also depends on the drainage and thickness of the soil. The usual maximum on spraying is two inches of liquid per week.

In loamy soils, with three to four feet of top soil, and no drainage problems, the permeability of the soil will

be rapid to moderately rapid.

When dealing with thinner soils, two to three feet deep, the spray rate has to be lowered because of the seasonal increase in water supply.

Meiser said the ideal soil for spraying is deep weathered bedrock with the fractures closed and thick soil, or, bedrock buried under thick deposits of soil. Limestone terrain was described as among the most sensitive soils. It is very sensitive due to the nature of the soil with sink holes and lime. It is very easy to contaminate the ground water in a limestone terrain.

When "waste eventually reaches the water table, it tends to move sideways until it reaches points of natural discharge. It would be ideal to have the water table 10 feet from the land surface. Consequently, heavy spray loading at Spring and the rising of the water table

from the Spring thawing of snow will saturate the land and water table causing a swampy situation." Meiser said that the direct ground water flow must be identified and it must be determined where the water is moving. He suggested the

layout of the field to be sprayed be set up on a rotating basis, dividing the land into seven sections and spraying one section per day per week. The rate of application should not exceed one-quarter inch per hour.

## Feb. 27 is Swine Producer's Day

LANCASTER — The Lancaster County Swine Producer's Day will be held February 27 in the auditorium of the Farm and Home Center, Lancaster, starting at 8:30 a.m.

Topics throughout the day will include: Hog and feed outlook by Louis Moore, Penn State Extension economist; managing swine waste, by Roger Grout, Extension engineer; feeder

pig health, by Larry Hutchinson, Extension veterinarian; large-scale swine management, by Melvin Huber, manager of Habegger's Mountain View Farm, Myerstown RI; and swine reproduction, by Dr. Daniel Hagen, Penn State.

A number of local swine business concerns will be displaying their products and equipment.

## Dairy meeting

ELKTON, Md. — A series of special dairy meeting will be held at Frock's Sunnyside Farm Restaurant, in Westminster, Md. on February 27, March 6, and 13, from 10 a.m. until 3 p.m.

On February 27, the meeting will deal with nutrition with Dr. Hemken, University of Kentucky, and Dr. Murley of VPI, as speakers. On March 6, Dr. Hansel of Cornell, and Dr. White of VPI will talk on reproduction and selection. Management will be covered on March 13.

Lunch will cost \$3.50 per day and there is a \$5 fee for registration. Those interested should call immediately to Janet L. Shank, Ext. Agent, Cecil Co., Md.

FRESH COWS EVERY WEDNESDAY IS SPRINGERS



DAIRY DAY

AT NEW HOLLAND SALES STABLES, INC.  
New Holland, PA

Consignments for Wednesday, February 21 Sale  
Herd of 50 Holstein Cows from Butler County, fresh and springers. Some cows due July, Aug., Sept. and Oct. These cows are averaging 50 lbs. milk per day.  
Also 8 head heifer calves, some purebreds. This is a top herd of cows consigned by Kelly Bowser.

SALE STARTS - 12:00 SHARP

Also Every Wednesday,  
Hay, Straw & Ear Corn Sale - 12:00 Noon.

All Dairy & Heifers must be eligible for Pennsylvania Health Charts.

For arrangements for special sales or herd dispersals at our barn or on your farm, contact:  
Abram Diefenbach, Mgr.  
717-354-4341

OR

Norman Kolb

717-397-5538

HEIFERS

BULLS

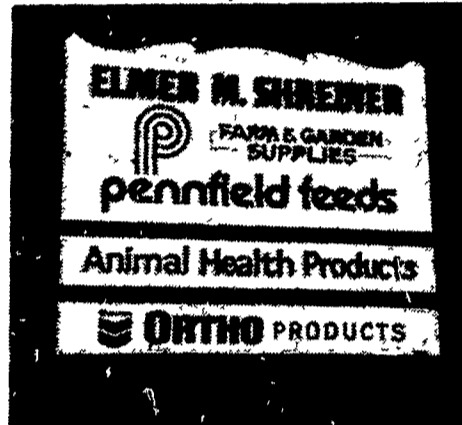
FOLLOW THE SIGN OF QUALITY

Your Full Service Dealer:  
**ELMER M. SHREINER**  
RD 1 New Providence, Pa.  
717-786-2500

SEE US FOR:

- ★ ROHRER'S GARDEN & FLOWER SEEDS
- ★ ORTHO LAWN & GARDEN PRODUCTS

ROUTE SERVICE AVAILABLE - SALESMAN, JOHN BRECKBILL



## FEBRUARY TRACTOR SPECIALS

CASE 990, 53 h.p., 12 speed - **\$8800**

CASE 995, 58 h.p., 12 speed - **\$9400**

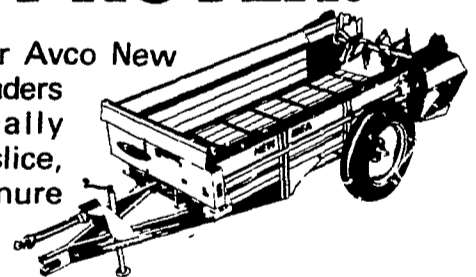
COMPARE, YOU'LL GO **CASE!**



case

SCIENTIFICALLY DESIGNED, FARM PROVEN.

The great all-weather Avco New Idea single-beater spreaders with the scientifically shaped paddles that slice, shred and spread manure as only a New Idea can. The heavy beater shafts are fitted with heavy steel notched paddles that rip chunks apart. Add an optional upper cylinder to level out heaped loads. They're the most spreader for your money!



where the whole idea means better performance



# OPEN HOUSE

— NEW EQUIPMENT INTRODUCTION AT 10 A.M. AND 1 P.M. FEATURING THE CASE 90 SERIES TRACTORS —  
— LUNCH SERVED FROM 11 A.M. TO 1 P.M. —

FRIDAY, FEBRUARY 23  
SOLANCO FAIR BUILDING

**10%** CASH DISCOUNT ON PARTS DURING WEEK OF FEBRUARY 19  
★ CASE ★ GEHL ★ NEW IDEA

**A. L. HERR & BRO.** Quarryville, Pa. Ph: 717-786-3521



We'll Be Looking For You!