

Public Sales Register

FRI MAR 2 - 9:30 A.M. Annual Spring Machinery Sale. All kinds of Machinery. Located at the Belleville Livestock Market, Belleville, Pa. Consignments must be in prior to sale day Belleville Livestock Market Manager. Glick & Gibboney Auctioneers.

FRI MAR 2 - Ray Hostetter, & Karl Kough Dispersal of Farm Equipment along Rt. 641 3 miles Southwest of Newville, Pa Ralph Horst Auctioneer

SAT MAR 3 - 9 A.M. 15th Annual All Day Sale at Bart Township Fire Company, Bart, Pa Located 6 miles Southeast

of Strasburg along Rt. 896 in Georgetown, Pa., Lanc Co

SAT MAR 3 - Public Auction of Farm Equipment, Household Goods and Antiques for Moses S. and Edna M. Garman located at Rt 501, just North of Schaefferstown, Pa. John E. and Paul E. Martin, Auctioneers.

SAT. MAR. 3 - Galen Pugh Dispersal of Farm Machinery. Located 3 miles Northwest of Shippensburg at Middle Spring. Ralph W. Horst Auctioneer

SAT. MAR 3 - 1 P.M. Pork Producers, Berks-Lehigh Co Sale located Kutztown Fair Grounds, Kutztown, PA. Ralph

W Zettlemoyer Auct Co., Auctioneer

SAT. MAR 3 - Public Sale Reg Dairy Heifers, Horses & Farm Machinery. Located 1 mile South of Van Wert, 4 miles East of Mifflintown Owner Leroy S Yoder, Jr Long Bros Aucts.

SAT. MAR 3 - 11 A.M. Eastern Shore Showcase Heifer Sale, 50 Registered Holstein Calves & Heifers Hunters Sale Barn, Rising Sun, MD For more information or catalogs write Robert Knutsen, R D 1, Rising Sun, MD 21911, 301-658-6325.

SAT MAR 3 - 12:30 P.M. Public Sale of Household

Goods and Personal Property Located along Panarama Drive, approx 2 miles NW of the Village of Bowmansville, on premises of Stauffer's Fruit Farm in Brecknock Twp., Lancaster Co., PA Sale by Ther-man K Burkhardt LeRoy S Horst and Paul W Horst Auctioneers

SAT. MAR 3 - 10 A.M. Public Sale of 17 Acre Farmette, Farm Implements, Household Goods & Some Antiques. Located along Wernersville Rd just outside Fritztown, Berks Co., Pa Terms by Clarence & Margaret Bennetch. Auctioneer H. H. Leid Auction Service

SAT MAR. 3 - Farm

Machinery Sale - Located in Tulpehocken Twp., Berks Co., Pa, along Wintersville Rd., 3 mile North of Millardsville & Rt 422 Owner Stuart G Moyer Auctioneer Earl S. Buffenmeyer

SAT MAR 3 - 9 A.M. Public Sale of Farm Equipment and Household Goods Lots of Hay Equipment Sale for Rudy Hoernen, Rt 206, Chester, NJ Auctioneer Col Fred R Daniel.

SAT MAR 3 - 10 A.M. Public Auction of Farm Equipment, Household Goods & Antiques Jay Tyson Schaeffers Mill Rd., Mt. Airy, MD. Ridgely & Streaker, Auctioneers. 301-489-4637, 301-829-2403

SAT MAR 3 - Public Sale of full line of Farm Equipment located South of Sporting Hill along Colebrook Road, Lancaster Co. Terms by Mrs. Amos Sauders. Rufus Geib and Raymond Miller, Auctioneers.

SAT. MAR. 3 - Public Sale of Dairy Cows, Farm Machinery, Straw & Corn. Located 5 miles South of Phoenixville along Rt 113, East Pikeland Twp., Chester Co., Pa. Sale for Millard & Mildred Twaddell Elton & Alvin Horning, Horning Farm Agency, Inc.

SAT. MAR. 3 - 11 A.M. Public Sale of Modern Farm Machinery, Livestock, Hay, Straw, Corn Located on the premises at R.D. 1 Middletown, Lower Swatara Twp., Dauphin Co., Pa. Take Fiddlers Elbow Rd off Main Street at west end of Hummelstown & go South to Hoffer Farm on left or take Rt 283 West to Middletown at Union St. exit & then continue North on Union St. or if coming from West on 283, exit at Vine St., cross over & return to 283 West & exit at Union St exit & go North to Hoffer Farm Turn right between house & barn at road & go back lane to next farm. Conditions by Mr. & Mrs. Kenneth R Umbrell. Harry H. Bachman, Auctioneer

SAT MAR 3 - 10 A.M. Public Sale of Carousal Horse, Antique Pistols, Horsedrawn Vehicles, Gasoline Engines, Farmall Tractor, Country Store Items, Tools, Antiques, Primitives & Collectibles. Located at Smokey Glen Farm, 16407 Riffleford Rd., Gaithersburg, MD. From Frederick, take I-270 South to Rt. 118, West approx 3 miles to Riffleford. From Washington, take I-270 North to Rt. 28 West approx. 5 1/2 miles to Riffleford. Sale by Farm & Home Antiques Auctioneers Austin Bohn & Charles Funkhouser.

SAT. MAR. 3 - 10 A.M. Auction Sale of Cars and Late Model Farm Equipment. To be held at the Norman Bunting & Sons, Inc. From Selbyville, DE take Rt. 54 East toward Fenwick, go approximately 4 miles to Norman Bunting Residence on Left. Sign will be posted on Rt 54. Pete Richardson, Auctioneer and Sales Manager.

ANNUAL CONSIGNMENT SALE SHARTLESVILLE FARM SERVICE FEBRUARY, 24, 1979

STARTING TIME: 9:30 A.M.

Location: Two miles East of Shartlesville on Old Rt. 22 - five miles West of Hamburg, Berks Co., PA.

QUALITY FARM EQUIPMENT HOUSEHOLD ITEMS AND ANTIQUES LARGE EQUIPMENT SALE - APPROX. 11:00 A.M.

Close-OUT Sale of Robert Spatz

- 1 Farmall 404 Gas Cultivator for 404
- 1 MC-Cormick #4 E. hammermill
- 1 Kosh Belly Mount 7 ft. Mower for H or M Farmall
- 1 Baler #47
- 1 160 Massey Spreader
- 1 5-Section Harrow
- 1 M-C Chopper (like new)
- 1 M Diesel Tractor
- 1 Rubber tire wagon w/side
- 1 Model 60 McDade Crimper
- 1 M.M. Side Rake
- 1 New Holland 616 Harvester Corn Cutter & Pick up Head
- 1 J.D. Model R Spreader
- 1 New Webb for R-Spreader
- 1 Disc 7 ft.
- 1 Cultipacker
- 1 Badger Blower
- 1 International 51 Chuck Wagon
- 1 Lamco Chuck Wagon
- 1 Harvey Racine 24 Elevator w/1 H.P. Motor
- 1 Farmer Grass Seeder
- 1 Pair Tractor Chains for 13-38 tire
- 1 Graham Home Plow 7 Tooth
- 1 Corn Harvester
- 1 Three Bottom Plow

- 4 Bottom fast hitch
- 90 Electric J.D. Lawn Mower
- 1967 Chev. Truck Chassis w/dual wheels
- New Holland No. 6 forage wagon w/roof w/3 beater, 10 ton running gear, front & rear loading
- J.D. 1240 4-row plateless planter with insecticide and herbicide
- Self feeding wagon
- New hay wagon McCreary 8 ton running gear
- Int. 46 baler w/thrower
- Bale wagon
- Ford plow 3 pt.
- Ford Cult. 3 pt.
- Oliver 2 row corn planter 3 pt.
- Snow Plow for utility tractor
- J.D. Manure spreader
- Cult. for J.D. #MT tractor
- 6 Ft. Disc
- A.C. belt blower
- Weed sprayer I & H working order
- 7 Ft. disc
- 10 Ft. dump hay rake - good condition
- #36 N.H. flail chopper
- 12 Ft. post hole digger fits H or M Farmall
- 2 row potato planter
- 3 pt. Dearborn 2 bot. plow
- IH 52 R combine, pull type side rake
- Dearborn cultivator
- IH Grass mower
- 3 pt. corn planter
- IH 13 disc grain drill
- Rubber tire wagon
- 5 tier incubator
- 3 cone shape brooder
- 2 feed carts
- 4 DeLaval milker pails
- 3 milk strainers
- Oliver single row corn picker
- Can & jars
- Iron kettle
- 7 1/2 h.p. vacuum pump, moves 130 CFM's
- Feed cart
- Hydraulic cylinder
- Cow clipper
- Neck chains
- Complete Kesco milk mover
- BB4 vac. pump
- 76 DeLaval
- Brady field cult.
- 2 lawn chairs
- 2 milk cans
- Color hanging lamp
- 2 wooden cloth trees
- Old wash board
- Iron skillet
- Old iron grill
- Auto horn
- Gas heater for k937 Ford
- Steel traps
- Coal bucket
- Doll crib
- Doll cradle
- Small tools
- Hand cult.
- Baby crib
- Oak porch rocker
- China and glass ware
- Numerous items to come

ALTERNATORS:

- 1 15 KW New
- 1 40 KW 3 Phase
- 1 15 KW Used

COMBINES:

- 101 Int. w/10 Head No. 222 Row Corn Head
- 26 Massey Harris
- F-Gleaner w/13 Ft. Grain Head, 330 Corn Head, Excellent Condition
- 1974 300 M.F. w/10 Grain Head, 33.0A Corn Head, Excellent Condition
- G-Gleaner w/13 Ft. Grain Head, 440 Corn Head, Excellent Condition

TRACTORS:

- A.C. D-14 Tricycle
- J.D. MT
- A.C. D-14 Wide Front End, Front Loader
- A.C. 160 Diesel
- A.C. New 5040 Diesel
- A.C. New 5050 Diesel
- A.C. 190 Diesel
- A-Farmall
- H-Farmall
- Farmall C
- J.D. 38 Harvester 2 row head
- M.F. No. 16 Grinder Mixer (94 Bu.)
- Steno Mat 4-16 Plow Fully Mounted.
- Dunham 10 Ft. Transport Disc Harrow
- N.I. 41 Ft. Elevator w/8 H.P. Gas Engine Like New
- Int. 175 Manure Spreader
- Badger Forage Blower
- 8 Ft. Disc Harrow
- N.H. 365 tank spreader
- J.D. grain drill
- N.I. 272 cutditioner 2 yrs.
- M.F. 15 Grinder Mixer 6 mo.
- Little Giant 38 ft. elevator 1 yr.
- 3 Bottom plow fast hitch for International

FOR INFORMATION CALL (215) 488-1025

AUCT. - DENNIS F. WAGNER

Food Being Served By The Appalachian Snowmobile Club.

AUCTION FRIDAY, MARCH 23 10:00 A.M. TRUCKS - TRAILERS - TRUCK TRACTORS - PICK-UPS VANS...

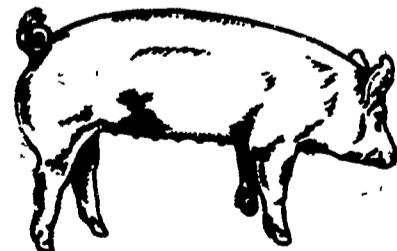
CONSIGNMENTS CONSIDERED UNTIL MARCH 10, 1979 Bethel, Pennsylvania

Auctioneers: **NELSON L. EBERSOLE & IRA SHOOP** (717) 867-2771 (717) 273-5408

BRED GILT SALE SATURDAY, APRIL 7, 1979

1:30 P.M.

Located 8 miles North of Myerstown on Rt. 501 & 1 mile South of U.S. 22 on Rt. 501 at Bethel, Pa. Turn West at Bethel School to second farm on left.



60 to 70 bred gilts, famous 3 way cross, Yorkshire, Hampshire & Duroc. Also 6 purebred duroc boars weighing from 300 to 400 lbs. out of Ricky Pfautz's herd. Gilts are bred to purebred Yorkshire out of Ivy Hill Farms, Smithburg, MD. Pigs were vaccinated for Erysipelas, wormed & treated for lice. No odd side hogs will be sold at this sale, they are all home raised.

Sale Conditioned by **HENRY H. MARTIN** 717-933-4279

Auctioneer Alvin Horning