

Goat organization to form soybean fields

SUNBURY — In response to the need for an organization which will responsibly represent the region's growing numbers of dairy goat breeders, a small group of individuals has drawn up plans for the Heart of Penn dairy goat breeders co-op, a group to operate on a modified co-operative fashion, with varied benefits accruing to members. Already, members can count on discounts on breeding fees, literature, magazine subscriptions and goat supplies as well as reduced rates on some livestock and household items. to name but a few.

Educational programs are being planned for future meetings to assist dairy goat breeders with herds of one or more does in their never-ending search for better

ways to breed better animals with increased production.

A gala goat show is planned for the Summer, where breeders can have their animals evaluated by an experienced judge, licensed by the American Dairy Goat Association, while dairy month activities are in the works for June as well as other events to publicize dairy goats and their products.

Bhagat named to post

NEW HOLLAND - Minu Bhagat, Leola, has been named to the position of food technologist in the Product Development Department of Victor F. Weaver, Inc., a New Holland food processor.

In his new position as food

For more information about H.O.P. activities and plans, one can contact: D. & R. Molare, R1 Bx25 Dornstife, Pa., 17823, 717-758-8359; T&D Peifer, R1 Herndon, Pa. 17830 717-759-3289.

Meetings will be held in the Sunbury Area and will be publicized in this paper as well as several goat related publications. Visitors are always welcome and membership is invited.

technologist, Bhagat will be responsible for research and development of new Weaver products.

cultmulcher ahead of the drill. This also removes the wheel tracks and conserves moisture by delaying the usual tillage operation until immediately before planting.

Plant at the proper depth. Soybeans require more moisture to germinate than corn, so they should be planted at a depth that assures adequate moisture contact with the seed. If the beans are planted early, while the soil is still cool, they should be planted as shallow as possible to take advantage of the sun's

(Continued from Page 159) warming effect on the soil surface.

Inoculate if necessary. Growers in the Midwest who have had their ground in soybeans during the last three years may not need to inoculate. However, many growers still use inoculation for added insurance.

Fertilize properly. Soybeans deserve proper fertility management, and that means running a soil test at least every other year. Otherwise, the soybeans could easily be short the nutrients they need in a year that otherwise

would be a year for big yields.

If soybeans are grown in a micronutrient - deficient area, the soil should probably be tested each year.

Check the germination rate. Certified seed must have a germination rating on the tag of each bag. This should be noted and the seeding rate adjusted accordingly. If bin-run beans are planted, the germination rate should be determined by sending a representative sample of the seed to a qualified seed laboratory.

Precheck planting equipment. A grower shouldn't wait until planting time to check his planter or drill. The earlier soybeans are planted, the higher the yields may be.

PUBLIC SALE

OF DAIRY HERD, FARM EQUIP, & TOOLS

Saturday, March 3

At 9:30 A.M.

Located approx. 5 miles south of Phoenixville along Rt. 113, East Pikeland Twp., Chester Co., Pa.

DAIRY

35 good Holstein milk cows in various stages of production. All information furnished day of sale. Also 2 yearling Holstein bulls & 3 calves 4 month old.

MILKING EQUIP.

DeLaval Compressor Pump No. 76 4 yrs. old, Wilson 330 gal. bulk tank, 2 DeLaval milkers, pails & strainers, stainless steel sink, Jamesway Cow Jacks, Stewart Clippers.

FARM EQUIP.

I.H. 560 Diesel, I.H. 350 Diesel, I.H. 400 Diesel, 2 Farmall M tractors - one with front end loader & blade, 3 N.H. wagons w/hay racks, 2 gravity flow grain wagons, Int. No. 60 Chuck Wagon (self feed wagon), I.H. stem crusher, N.I. Cond., N.H. No.56 side rake, 2-3 section harrows, Gobel disc harrow, A.C. forage harvester, A.C. ensilage blower P.T.O., N.H. 818 harvester, J.D. 495 4 row corn planter, J.D. 24T baler w/thrower, N.I. No. 7 - 1 row corn picker, I.H. 7' mower, N.H. 6' No. 72 rotary mower, Mayrath corn & hay elevator, Van Brundt 13 disc. drill, I.H. 2 row corn planter, 20' Harvest Handler alum. elevator, M.F. No. 50 clipper combine, 4 row and 2 row Int. cultivator for H. or M., I.H. No. 60 4 bottom plow, Hawk Bilt manure spreader, portable cement mixer, J.D. Hammermill Fairless Feed Grinder, chicken scalding & plucker, 290 gal. gas tank, P.T.O. post hole digger, bag wagon, snow fence, chicken crates, 6 row weed sprayer, 4 - way Hyd. cylinders, 2 hole corn sheller, used aluminum, roofing, 1 Lombard & 1 Homelite Chain Saws, air comp., wire cable, 2 ext. ladders 28' & 30', tractor mounted circular saw, Gravelly tractor w/mower, wooden fence posts & saddle.

CROPS

Approx. 5 ton wheat & barley straw, 35 ton good mixed clover & timothy hay, 500 bu. ear corn, also one field of fall seeded barley to be sold in the field, approx. 75 ton silage.

HOUSEHOLD GOODS, TOOLS & ANTIQUES

30 gal. farmers boiler complete with ornated cows & corn design on jacket, copper kettle, butter churn, old United 8 H.P. gasoline engine on wheels, 2 horse sleigh, cider press wooden buckets, lanterns, seeders, weather vane, milk stools, old wagon jack, sleds, scyths, forks, shovels, augers, saws and other tools - some old, 2 sets single harness, milk cans, old high chair, high back rocker, child's rocker, bench table, toys, books, chairs, odds & ends of dishes, picture frames, bottles, 2 iron beds brass knobs, glass butter churn plus many articles not mentioned.

Order of Sale - 9:30 A.M. Household Goods & small items followed by tools, milking equip, crops, farm equip. & dairy cows.

Terms by **MILLARD & MILDRED TWADDELL**
R.D. #2
Phoenixville, Pa. 19460
933-6624

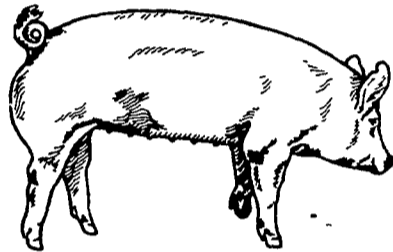
Elton & Alvin Horning Auctioneers
Horning Farm Agency, Inc.
Main Street
Morgantown, Pa. 19543
215-286-5183

Lunch Available

BERKS - LEHIGH PORK PRODUCERS SPRING SALE

50 HEAD

Bred Gilts, Open Gilts, Service Boars



Sale held at the Kutztown Fairgrounds

SATURDAY, MARCH 3

1:00 P.M.

For Catalog Contact:

TERRY BENNECOFF

RD 2, Kutztown, PA 19530

Auctioneer: Ralph Zettlemoyer

PUBLIC SALE

Discontinuing farming, the undersigned will sell located west of Frederick, Md. on Route 340 to Petersville Exit Route 180, left on 180 approx. 3 miles to Catholic Church Road, right 1 mile to farm.

THURSDAY, FEBRUARY 22

At 10:30 A.M.

FIVE TRACTORS & MODERN FARM MACHINERY

Int. 856 diesel tractor w/W.F., 3 pt., P.S.; John Deere 4010 diesel tractor; Int. 666 diesel tractor w/W.F., 1100 hrs.; Int. 2250 loader w/8 ft. bucket; Farmall M tractor w/mounted New Idea 2 row corn picker; Farmall C tractor w/cultivators; saw mangle; Int. 411 4-16 plow; Int. 55 chisel plow, 7 ft. 2 yrs. old; Int. 500 transport 12 ft. disc; Int. light disc; J. Deere 740 hydrolic 14 ft. 32 tooth transport fold-over harrow w/new teeth; cultipacker; Int. 633 fast hitch 4 row cultivator; Int. 990 mower-conditioner; Int. 46 baler w/1 yr. old bale thrower; Int. 35 side rake, new; N. Idea side rake; 3 bale wagons, 1 yr. old; Mayrath 33 ft elevator w/corn attachment; N. Holland 16 ft elevator; 16 ft. alum. grain and feed elevator; Int. 455 four row corn planter; Int. 8 flail chopper; Wood Bros. 9 1/2 ft. rotary shredder, new; J. Deere 114 silage wagon w/10 ton chassis and high floatation tires; Int. 51 silage wagon w/10 ton chassis; 16 ft. feeder wagon on new 6 ton chassis; N. Idea wagon w/corn bed and hoist, Mayrath field sprayer w/200 gal fiber glass tank; 2 wheel farm trailer; Danhauser 3 pt post hole digger w/14 in. auger; Winpower portable alternator, 120/240 volts; 275 gal fuel tank w/elec pump, 110 gal fuel tank w/battery operated pump; Seed Easy tractor seeder; some machinery for parts and junk; 100 locust posts; good 8 ft. 2 x 4 lumber.

1964 Int. 1800 truck w/new 14 ft. Winnebago grain body w/hoist, motor recently overhauled.

Approx 500 bales of top Timothy hay - by bale
Approx 500 bales of Straw - by bale

GLENN E. & BESSIE F. PEARL

Phone: 473-5619

Terms: Cash - Not Responsible for Accidents.

Auctioneer: Robert C Mullendore

Clerk: C L Metz

Lunch Rights Reserved

PUBLIC AUCTION

\$1,000,000 INVENTORY SALE OF FARM AND INDUSTRIAL TRACTORS AND MACHINERY SATURDAY, MARCH 24

At BATAVIA FARM EQUIPMENT, INC.

1/2 mile North of exit 48 off the New York State Thru-way on Rt. 98.

100 TRACTORS

Including:

10 4 WD Steiger's and International's
100 plows and discs
30 balers, 40 choppers, 35 self propelled combines: Internationals, John Deere's, NI uni systems, corn & grain heads

New Equipment - Int. 1086, 990 haybine, 475, 485, 490 & 770 discs Int. & NH spreaders, balers and choppers.

This is a spring inventory clearance auction, some items will be added and others deleted due to daily business.

All Machinery Owned by:

BATAVIA FARM EQUIPMENT, INC.

7941 Oak Orchard Rd. (Rt. 98)

Batavia, NY 14020

Sale Managed by

GOODRICH AUCTION SERVICE

Corner of 38 & 383

Newark Valley, NY 13811

607-642-8688 or 607-729-2866

Watch future issues of

LANCASTER FARMING for an itemized sale listing

PUBLIC SALE

Having sold my dairy herd and renting my farm will sell on farm located 10 miles south of Hagerstown, Md. and 8 miles south of I-70 on Route 65 or 3 miles north of Sharpsburg, Md. on Rt. 65.

FRIDAY, FEBRUARY 23

At 10:30 A.M.

THREE JOHN DEERE DIESEL TRACTORS

1977 John Deere 2040 diesel tractor, W.F. 300 hrs. 1975 John Deere 830 diesel tractor, W.F., 800 hrs. and No. 143 loader. 1972 John Deere 2520 diesel tractor, dual side hydraulic controls, roll guard, 1900 hrs.

LATE MODEL FARM MACHINERY

John Deere 327 mounted 2 row corn picker; New Holland 273 baler with thrower; Fox 2100 forage harvester, low profile belted corn head and knife sharpener; J.D. 64 hopper blower; J.D. 214 self unloading wagon on 1065 chassis; Int. 105 self unloading wagon on 8 ton chassis; J. D. 34 manure spreader w/hydraulic ingate; 2 bale throw wagons; J.D. 1240 four row corn planter; 2 J.D. K.B.A. 32 disc harrows; J.D. 3 pt. 4-14 trip bottom plow; Oliver 3 pt. 3-14 trip bottom plow; J.D. model FB 13 disc grain drill; N.H. 450 3 pt. 7 ft. mower; Int. 14 side rake; J.D. 300 elevator; Leily ground driven fertilizer spreader; J.D. 15A flail chopper; 16 ft. flat bed wagon; 3 pt. 7 ft. scraper blade; 16 ft. portable elevator; seed sower; only small amount off wagon

Note: This will be some of the nicer machinery sold this year, most of which is less than 3 years old.

Terms: Cash Not Responsible for Accidents

JAMES G. SHAULL

R. 1, Boonsboro, Md.

Phone: (301) 791-1476

Auctioneer: Robert C. Mullendore

Clerk: C.L. Metz

Lunch Rights Reserved