

# Dauphin Co.

(Continued from Page 149)

Judy Fair, Harrisburg R3, of the Upper Dauphin club.

Recognition for the high project score in each club went to Brenda Fisher and Darryl Rode, Halifax R4. Darryl is president of the Upper Dauphin club.

Named champion junior showman was Dwayne Messick, Elizabethtown R2. The champion intermediate was Judy Fair, and Brenda Fisher was named the champion senior competing in that competition.

Monique Sweigard, Halifax R3, was given a special award for having the champion heifer competing at the county roundup.

In the steer competition, Brenda Fisher was named for having the lightweight champion, Tim Foreman, Hershey R1; had the

mediumweight champion, Doug Deppen, Halifax R3; with his brother Dave accepting his award, had the champion lightheavyweight, and Grayson Fair, Harrisburg R3, claimed the champion heavyweight honors. All received trophies for their efforts.

The meat for the banquet was from the steer raised by Doug Deppen for his 4-h project.

Speaker for the banquet was the Rev. Robert Kettering, pastor of the Florin Church of the Brethren, whose talk dealt with "the more you put into life, the more you will get out."

Those attending were also entertained with a slide show, showing various scenes of the 4-H's throughout their busy 1978 year.

## Holsteins classified

CHAMBERSBURG - T.K. Nitterhouse of Chambersburg, Pa. reports that his Registered Holsteins were classified for body conformation on February 7. The scoring was done by an official classifier of Holstein-Friesian Association of America, Brattleboro, Vermont.

Dairymen enrolled in this herd improvement program receive a numerical score for each animal evaluated. The True-Type Holstein represents theoretical perfection and has a value of 100 points on the classification score card.

Including animals previously scored, the Ni-Crete Farm herd has 7 Excellents, 47 Very Goods and 81 Good Pluses.

The information from the classification of the herd will be summarized by the Holstein Association on its high speed computer. Returned to the breeder, these reports provide useful information for selection in

the herd. The data is also published and available as reference for the herd improvement programs of Holstein dairymen everywhere.

xxx

Most chicken soups freeze well, according to the National Broiler Council. If you are cooking up a quantity for later use, cool it quickly to room temperature by setting the pot in a sink of cold water or pour it into a freezer container, cover tightly and place directly in the freezer. Reheat the soup carefully and just to serving temperature to preserve its fresh flavor.



## 4-H sponsors dinner

NORRISTOWN - A ham and chicken supper, sponsored by the Montgomery County 4-H Equine Council, will be served homestyle February 24 at 6:30 p.m. in the Skippack Fire Hall on Route 113 in Skippack. Donation is \$6, children under 10, \$4.

There will be free door prizes and entertainment following the dinner. Mrs. Chris Jones, Schwenksville and Mrs. Dolores Shenkle, Colledgeville, are co-chairpersons.

The public is invited. There is only 'one sitting' so one should get tickets as

soon as possible to the County Extension office, 400 Markley Street, Norristown 215-277-0574 (or by calling 215-489-4266).

The dinner is being given by the Council, which is composed of leaders and advisors of the Montgomery County 4-H Horse clubs, to benefit Sebastian Riding Associates, Inc., an independent, non profit, therapeutic riding program for the physically, mentally, and emotionally disabled. Sebastian is one of the few therapeutic riding programs which has a residential riding director, works ex-

clusively with the hand-dicapped and owns and trains its ponies. It is also one of the few that is willing and able, with medical supervision, to deal with all handicaps. Sebastian is located on Water Street Road in Colledgeville.

## PUBLIC SALE OF FARM IMPLEMENTS AND DAIRY HERD SATURDAY, FEBRUARY 24

At 11:00 A.M.

Located midway between Bowmansville and Fivepointville along Pleasant Valley Road approx. 2 miles off Rt. 625 in Brecknock Twp., Lancaster County, Pa.

**21 HEAD HOLSTEIN DAIRY CATTLE including 19 Head Cows and 2 Bred Heifers, health charts 2 Work Horses**

Farmall 400 Tractor on steel; Grove Silage Wagon; New Idea Trailer Hay Mower; New Idea P.T.O. Manure Spreader; Owatona Haybine; Corn Binder Parts & Loader; John Deere KBA Disc; New Idea Horse Drawn Side Delivery Rake; Horse Drawn Cultivator and Fore Cart Trailer Wagon; 3 pt. Scraper; David Bradley Horse Drawn 2 Row Corn Planter; Belt Powered Corn Sheller; Trailer Field Sprayer; Tobacco Hoer; Walking Plow and Shovel Harrow; Roto Sprayer Pump; 1000 Gallon Water Tank on wheels; Winpower Generator.

Alfalfa Seeder; Bale Box; Myers Water Pump with 3 H.P. Motor; Dust Collector; 350 5/8 Bu. Baskets; Stove; 48 ft. Silo Pipe; Electric Power Saw; Plastic for Tobacco Beds; Electric Cord; Chain Saw; Belts; Implement Wheels; Tobacco Shears; Straw Hooks; Water pipes; Grain Binder; Canvas; Nuts & Bolts; Scrap Iron; 2 Man Hand Saw; Power Lawn Mower; Fuel Tank; Range Shelters; Milk Cans.

### HOUSEHOLD GOODS

Kerosene Range; Kitchen Cabinet; 1 Bedroom Set; Treadle Sewing Machine; Small Wardrobe with Drawers; Metal Cabinets; Cribs; Play Pen; Mantel Kerosene Lamp; Baby Walker; Chairs; Trunk; Pint Jars; Gal. Jugs; Rocker; Galvanized Bath Tub; Kerosene Lantern; Gas Lantern; 2-5 Gal. Cream Cans; plus many other items to numerous to mention.

Terms by:

**ENOS SAUDER**

Auctioneers

Leroy S. Horst & Sauder

Refreshments will be served

Not responsible for accidents if any should occur



AT NEW HOLLAND SALES STABLES, INC.

New Holland, PA

If you need 1 cow or a truck load, we have from 100 to 200 cows to sell every week at your price. Mostly fresh and close springing Holsteins.

Cows from local farmers and our regular shippers including Marvin Eshleman, Glenn Fite, Kelly Bowser, Bill Lang, Blaine Hoffer, Dale Hostetter, H.D. Matz, and Jerry Miller.

**SALE STARTS - 12:00 SHARP**

Also Every Wednesday,

Hay, Straw & Ear Corn Sale - 12:00 Noon.

All Dairy & Heifers must be eligible for Pennsylvania Health Charts.

For arrangements for special sales or herd dispersals at our barn or on your farm, contact:

Abram Diffenbach, Mgr.

717-354-4341

OR

Norman Kolb

717-397-5538

HEIFERS

BULLS

## THE McCURDY AUGER



If you're currently using shovels, buckets or bags to transfer bulk materials to application equipment, you need the economical advantages of Unverferth McCurdy's Hydraulic auger. You can realize fertilizer savings of eight to ten dollars per ton by purchasing in bulk. One man can easily fill a six-row planter in five minutes, the end of back breaking hand loading.

Would you like to SAVE \$8 to \$20 per ton on your fertilizer costs in 1979? The McCurdy Auger is the answer.

Nothing extra to buy, comes complete with all hoses, brackets and couplings - even a winch is included for easy one-man operation. Powered by a 12 h.p. Charlynn motor. Color-coded nylon rope pulls, provide safe, easy on-off control of auger. Open hopper design permits flushing of entire tube and hopper with a garden hose. Tube measures 6" x 12" and can handle up to 1500 lbs. of fertilizer per minute. Minimum volume from tractor 8 G.P.M. Fits any makers gravity flow box.



**UNVERFERTH McCURDY**  
Kalida, Ohio 45853

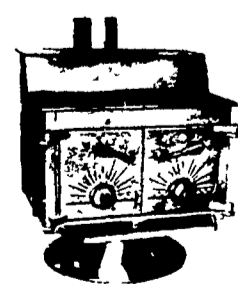
## THE ALASKA WOOD BURNING STOVE AND FIREPLACE

(A Modern American Version of a Canadian Step Stove)

- \* Heating One Room Or Entire Home.
- \* 9 Handsome Models Sand Blasted Finish.
- \* Chrome Trimmed.
- \* Hot Air Unit Available.
- \* Lifetime Guarantee.
- \* Construction - 1/4" & 5/16" steel boiler plate, firebrick lined-extra cast iron door-greater efficiency, Baffle plate-lower stack temperature.

Cost Less Built Better

Don't let anyone tell you a baffle system isn't important!



Special Prices on all models in stock to make room for New Models.

STORE HOURS:  
Closed Mon. and Tues.  
Wed. thru Fri. 10 to 6  
Sat. 10 to 4  
Other hours by appointment

CHESTER B. NOLT (Dist.)  
24 S. Hershey Ave.  
Bareville  
Leola, Pa. 17540  
Phone (717) 656-6336

## FARM EQUIPMENT DISPERSAL

FRIDAY, FEBRUARY 23

Sale at 11:00 A.M.

The undersigned quitting farming will sell on their land located about 8 miles East of Chambersburg, Pa., from Rte. 81 use Wayne Ave. Exit, go South on Rte. 316 to Duffield Road, turn East to Fetterhoff Chapel, farm just South of Chapel or turn South off Duffield to Mont Alto Rd. watch for signs.

**TRACTORS - PICKUP - FARM MACHINERY - ETC.**

Case 2470 Diesel four wheel drive, 504 Turbo-Charged tractor, Cab, air and heater, 176 H.P., 1560 hrs., excellent cond.; Oliver 1800 Diesel with narrow front; Farmall H and loader; 1962 Studebaker pickup; Int. No. 710, 6-18 inch auto-reset plow; Oliver transport disc; 28 blade; Case 655 S. P. windrower; Morrill wheel rake; Fox 3000 harv., 2 row head and pickup attach.; Kools blower and pipe; 2 - J.D. 115 chuck wagons; Oliver 73 H two row picker; 2 J.D. 1064 wagons with Kil-Bros. 350 bins; 42 ft. Mulkey elev.; Kingwyse roll-way elevator; Dunham 10 ft. cultivator; Oliver 4 row 3 pt. cults.; N.I. No. 212 flail spreader; home rigged mounted sprayer; Int. 16 x 7 drill on low rubber; Int. 4 row planter, needs boxes; 2 V type snow plows; blade; new steel corn crib not assembled; 4 and 16 hole hog feeders; 2 sets tractor chains; log and other chains; hyd. cylinders, lot of hyd. hose, 18 x 34 tire, other wagon tires and wheels, air compressor, elec. motors of various size, bolts of all description, parts bin, tools, platform scales, pipe threader, bench grinder, block and tackles, lot of misc. items, iron etc. 3,600 Bales of mixed Hay, 725 bales of Straw, 24 ft. corn silage in 20 ft. silo.

Auctioneer's Note—Most of equip. in excellent cond., some like new. Don't miss it.

Terms: Cash; Lunch at Sale.  
**PAUL J. & PEARL E. HOSTETTER**  
Phone (717) 264-5860,  
R.D. 5, Chambersburg, Pa.

Ralph W. Horst, Auctioneer  
Gossert and Harsham, Clerks