

Dauphin County DHIA

(Continued from Page 138)

Conewago Farms				
Wanda	5-3	16,138	4.1	660
Sis	4-7	17,813	4.2	744
Margo	4-1	15,684	3.7	574
Belle	3-2	15,191	3.5	533
Ila	2-2	12,957	4.3	560
Earl E. Keefer				
Harriet	10-4	16,295	4.0	645
Etta	8-9	15,031	3.5	523
Brenda	4-8	14,064	4.1	577
Bette	4-5	11,086	4.4	582

Magda	4-8		4.3	603
Shelly	5-9	13,575	4.2	574
Robert Oellig				
Brownie	5-3	13,607	5.2	706
Eve	3-4	12,138	4.4	529
Proud	2-3	12,809	4.0	506
Calvin B. Mauser				
Sadie	7-10	12,394	4.4	545
Libby	5-4	12,287	4.5	559
Gayle	5-0	11,751	5.2	607
Roxie	5-0	11,907	4.4	519
Reba	5-0	15,117	5.2	790
E Pansy	4-2	10,996	4.9	535
Dora	3-11	10,693	4.9	524
Saphire	1-10	11,408	4.6	525
Robert J. Schaffer				
Rita	6-3	18,443	4.2	779
Goldie	5-5	21,593	4.3	928
John Roy Book				
Mable	4-2	17,075	3.5	598
Joy	2-11	16,148	3.9	629
Shegirl	3-1	13,896	3.8	532
Horny	3-1	20,440	3.5	721
Anna	2-11	17,704	3.5	617
Lee R. Sweigard				
Black	5-1	12,585	4.2	530
Sadie	0-0	15,315	3.8	579
448	5-2	14,242	4.1	579
Stoney Lawn Farms				
Lone	10-0	14,403	4.5	643
Cindy	3-8	17,914	3.3	599
Julie	3-3	19,300	3.5	685
Carrot	2-3	13,302	4.2	559
Autumn	2-4	14,006	3.6	511
Candy	2-4	15,952	4.1	652
Besta	2-1	16,661	3.6	606
Lytle Farms Inc.				
Audrey	9-11	17,821	3.5	626
Leona	7-3	20,507	3.6	731
Carrie	5-2	20,157	3.7	737
Pansy	5-2	20,574	3.2	668
Andi	4-1	17,237	3.6	619
Dolly	3-5	17,330	3.4	597

Lancaster Farming, Saturday, February 17, 1979-139

Paul L. Crissinger				
Evang	10-3	15,889	3.7	595
Rosie	7-6	17,628	3.4	604
Elaine	6-6	21,216	3.6	754
Tammy	7-0	21,903	3.7	802
Stacy	4-5	17,925	3.2	568
Crystal	4-2	17,931	4.2	749
Amiga	3-5	14,726	3.8	555
Walter Schaffer				
G 11	4-10	13,685	4.0	549
J. Melvin Brandt				
Cindy	6-3	21,077	3.9	824
Wilmer Campbell				
Trixie	6-6	12,099	5.0	604
Bubbles	4-1	12,217	5.2	637
Beth	2-0	10,784	4.9	526
Roy C. Wilbert				
Bess	7-0	15,835	3.3	526
R Own Dairy Inc.				
60	5-2	13,757	4.3	585
53	1-11	14,116	3.7	529
Molly32	3-6	15,815	3.2	508
Homer Campbell				
63	4-4	17,614	3.6	630
41	4-0	16,990	3.2	549
129	3-0	13,107	3.9	510
126	3-1	14,970	3.4	513
Catalpa Farms				
Naomi	6-3	19,934	4.2	832
Darlene	3-2	17,171	3.9	662
Stanley R. Long				
Bess	14-3	12,135	4.1	503
Babs	6-9	13,658	4.3	591
Shaker	4-3	19,492	4.0	776
Ginnie	3-5	15,411	3.8	586
Rinnie	3-3	13,095	4.2	547
Restful Acres				
Nellie	8-5	20,137	3.5	701
Burke	6-2	22,026	3.7	814

(Turn to Page 140)



If you have fat
cattle or
need feeders ...

**THINK
NEW HOLLAND**

BEEF SALES

MONDAY - 1:30 P.M.
THURSDAY - 11:00 A.M.

Sale Order - Fat Bulls, Steers, Stockers and
Beef Cows
Veal Calves - 4:30 Thurs.

NEW HOLLAND SALES STABLES, INC.

Phone: 717-354-4341

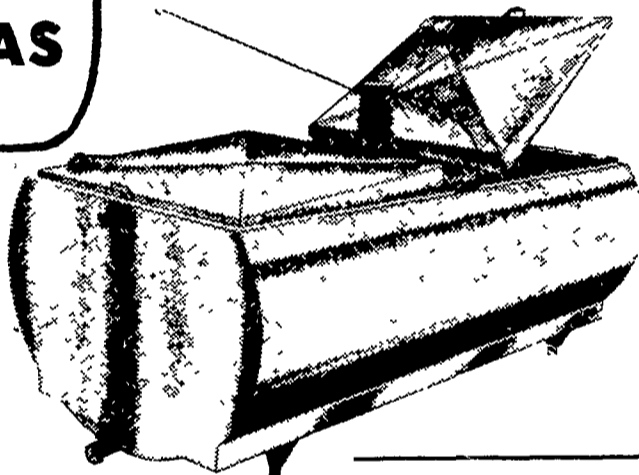
Daily Market Report - Phone: 717-354-7288

Abe Diffenbach, Manager

Field Representatives - Alan Diffenbach 717-656-9806

Luke Eberly 215-267-6608

**MAKE ME A
BULK MILK
COOLER THAT HAS
EVERYTHING!**



MUELLER Bulk Milk Coolers

THE MUELLER MODELS OH, MHL, AND
MW WITH HIPERFORM MAKE ALL OTHER
BULK MILK COOLERS OBSOLETE
SEE THE MUELLER NEW MODELS

★ 500 MW ★ 600 MW

The "MW" is one of the Lowest pouring Height Bulk
tanks. Check with us all the new features of the "MW" bulk
tank.

If you are in the market for a bulk milk cooler and you
don't check all the advantages of the Mueller "OH"
"MHL", and "MW" you may be buying an obsolete cooler.

USED TANKS

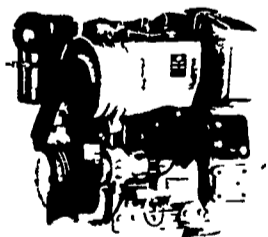
600 gal. M Mueller
300 gal. Mueller
375 gal. DeLaval
500 gal. Milkeeper

350 gal. Esco
425 gal. Esco
500 gal. Mojonier
600 gal. Mojonier

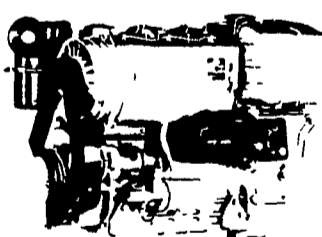
400 gal. Dari-Kool
D-2 600 gal. Girton
D-2 400 gal. Girton
500 gal. Wilson

800 gal. Jamesway
2-400 gal. Jamesway
500 gal. Jamesway

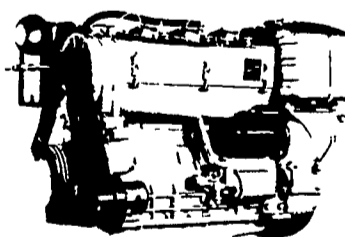
ASK US TO SEE A **MUELLER** **FRE HEATER** IN OPERATION, RIGHT ON THE FARM.



2800 R.P.M.
44 SAE HP
40 DIN HP



2800 R.P.M.
66 SAE HP
60 DIN HP



2800 R.P.M.
88 SAE HP
80 DIN HP



2800 R.P.M.
132 SAE HP
120 DIN HP



**1050 SU
SERIES**

2800 R.P.M.
22 SAE HP
20 DIN HP



**FOR MORE
INFORMATION
ON HIGHER H.P.
- CALL US! -**

USED DIESELS

- 1-Cyl. Deu. (SOLD)
- (4) SR2 Lister
- (4) DVA 1500 Slanzis
- 1 - ST2 Lister

THE "RIGHT FROM THE START" DIESEL ENGINE LINE FOR FAULTLESS PERFORMANCE.

QUEEN ROAD REFRIGERATION

Box 67, Intercourse, PA 17534

Phone: John D. Weaver - 717-768-9006 or 768-7111
or Answering Service - 717-354-4374

**24 HOUR
SERVICE**