

Lancaster Co. DHIA

(Continued from Page 121)

David K. Stoltzfus R&GrH	32	30.5	96.0	54.1	3.6	1.96
Jacob S. Stoltzfus R&GrH	27	42.6	86.8	53.2	3.7	1.95
Gerald Martin RH	30	43.0	95.9	52.3	3.7	1.94
Ru Be Mar Farms RH	36	25.5	83.1	51.6	3.8	1.94
Donald R. Bare RH	30	59.6	91.2	49.4	3.9	1.94
Ray P. Bollinger R&GrH	34	49.2	94.1	49.4	3.9	1.93
W. Eugene Witwer RH	34	23.7	83.4	51.6	3.7	1.93
Maurice F. Welk R&GrH	30	37.0	85.4	49.5	3.9	1.93
David L. Landis R&GrH	32	64.0	92.5	48.5	4.0	1.92
J. Wade Groff R&GrH	28	45.0	92.9	45.8	4.1	1.90
J. Wilmer Eby R&GrH	35	63.7	88.8	51.8	3.7	1.90
John K. Peters R&GrH	31	46.0	89.6	47.1	4.0	1.90
John U. Glick R&GrH	38	47.9	91.5	48.5	3.9	1.88
Steve M. Stoltzfus R&GrH	28	25.0	90.6	50.3	3.7	1.88
James G. Kreider R&GrH	28	153.9	92.3	47.2	4.0	1.87
Nelson H. Hershey RH	32	37.5	89.7	45.7	4.1	1.87
Earl Smoker R&GrH	29	39.3	96.8	49.8	3.8	1.87
J. Clayton Charles R&GrH	34	41.8	86.2	46.1	4.1	1.87
Samuel E. Long Mix	31	52.2	89.7	47.8	3.9	1.87
Ben K. Stoltzfus R&GrH	29	33.0	81.4	49.0	3.8	1.87
Nelson H. Wenger RH	30	42.0	92.2	47.9	3.9	1.87
Stephen J. Stoltzfus R&GrH	39	41.3	95.9	49.1	3.8	1.87
C. Dale Bollinger R&GrH	30	48.9	94.8	52.9	3.5	1.86
M. Irvin Eberly R&GrH	33	31.0	90.3	47.1	3.9	1.86
Luke Ray Zimmerman Mix	34	43.0	95.0	48.9	3.8	1.86
Robert L. Shelly R&GrH	32	36.0	85.2	48.7	3.8	1.86
Samuel E. Beiler RH	28	48.1	80.2	52.6	3.5	1.86
Melvin M. Groff R&GrH	30	28.0	89.3	47.6	3.9	1.85
Abraham Shelly Jr. R&GrH	29	38.2	89.2	50.7	3.6	1.85
Leon S. Lapp R&GrH	32	33.3	97.9	50.7	3.6	1.85
Nelson S. Martin RH	26	45.8	89.8	49.0	3.8	1.84
Paul H. Hursh R&GrH	37	87.4	91.3	46.0	4.0	1.84
Samuel I. Esh RH	27	41.9	80.1	50.4	3.7	1.84
Lester J. Wiker Mix	33	59.5	96.1	54.2	3.4	1.84
Ivan M. Hursh R&GrH	24	43.5	81.6	47.5	3.9	1.83
Fred Crider R&GrG	28	54.4	85.5	39.0	4.7	1.83

John F. Stoltzfus R&GrH	34	38.3	85.5	48.2	3.8	1.83
J. Ray Ranck R&GrH	34	45.7	89.3	47.0	3.9	1.83
Ivan Zook Mix	25	62.0	84.8	47.0	3.9	1.82
Amos M. Stoltzfus RH	29	35.9	98.2	49.7	3.7	1.82
Rohrer Brothers R&GrH	31	44.9	91.1	45.4	4.0	1.82
R. Edwin Harnish R&GrH	35	41.7	89.7	45.6	4.0	1.82
Allen Lee Stoltzfus RH	26	33.0	88.1	50.7	3.6	1.82

J. Robert Kindig R&GrH	28	57.0	90.4	44.7	4.1	1.82
John K. Stoltzfus R&GrH	33	32.1	93.5	47.4	3.8	1.81
Noah K. Beiler R&GrH	31	41.0	86.5	53.4	3.4	1.81
John P. Lapp R&GrH	27	40.1	87.7	47.9	3.8	1.81
Harry S. Aungst RH	28	62.9	92.9	48.3	3.7	1.80
George M. Hurst R&GrH	33	55.0	89.1	49.0	3.7	1.80

(Turn to Page 125)

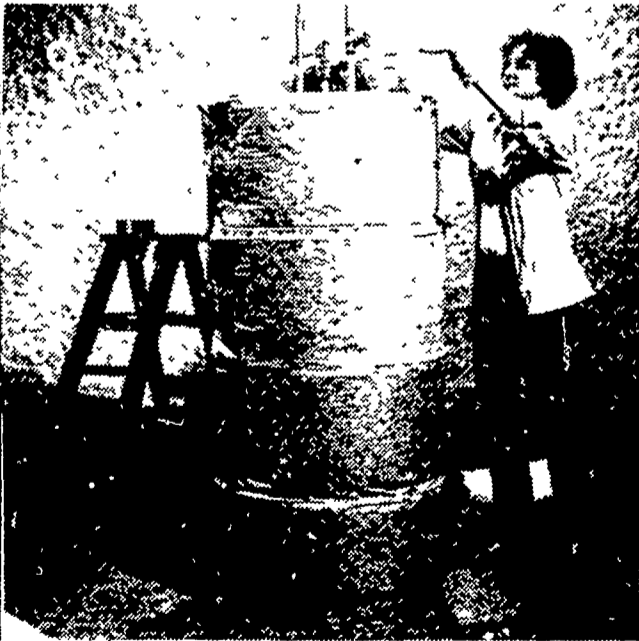
Insulate Your Electric Water Heater and Save!



Adding a blanket of insulation to your electric water heater is quick and easy. Inexpensive, too. About 30 minutes of your time and about \$10 worth of materials should do it.



Cut strips of insulation to wrap around your tank . . . two half-circle pieces to cover the top (do not cover temperature-pressure relief valve). Mark thermostat locations and apply duct tape to all seams.



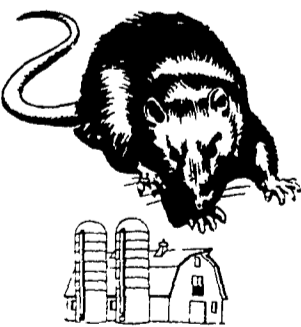
Because insulation helps contain heat in the tank, it saves energy and money. In less than six months your extra insulation can pay for itself. After that, savings continue for years!



Granted . . . electric water heaters are factory insulated. But, when you can make yours a little more efficient simply by wrapping it in 3½ inches of ordinary household insulation . . . why not?

NOTE: These suggestions are for **electric** water heaters. If you have a gas or oil water heater, check with your fuel supplier about insulating it.

ATTENTION FARMERS... FREE ESTIMATES ON RODENT CONTROL



RODENTS carry diseases which can endanger the health of your flocks. Your business is raising the flocks. Ours is protecting them.



1278 Loop Rd.
Lancaster, Pa. 17604
717-397-3721

Since 1928
Pest control is too important to trust to anyone else

"Saving energy saves for all of us"

PP&L