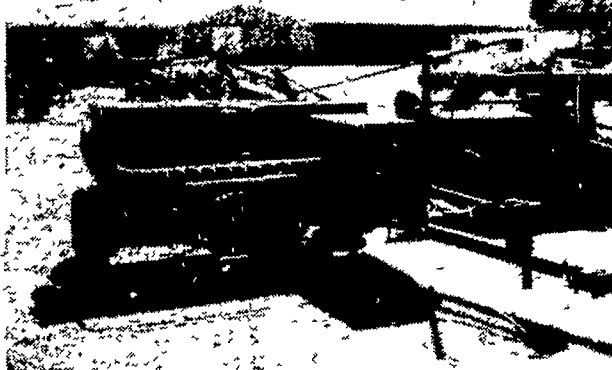


*Were Clearing 'Em Out -
Come 'n' Save!*



USED DRYER

Meyer Morton 350 Bushel
PTO Batch Dryer **\$2,500.**



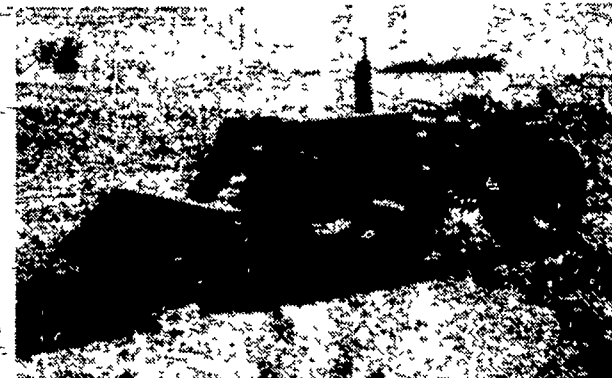
USED BALER

(2) JD 336 Baler
w/#30 Thrower ea. **\$3,950.**



USED TRACTOR

John Deere 730 Diesel,
A-1 Condition **\$3,950.**



USED TRACTOR

John Deere 1520 Gas w/New
143 Loader **\$6,250.**

USED BALER SPECIALS

New Holland 67 Baler	\$775.00
John Deere 14T	750.00
John Deere 14T w/ejector	450.00
John Deere 24T	950.00
John Deere 24T w/thrower	1,750.00
New Holland 275 w/thrower	2,350.00

USED TRACTORS

MF 175 Diesel	\$5,850.00
JD 730 Diesel A-1	3,950.00
Farmall H w/loader	950.00

USED HARVESTER SPECIALS

NH 880 2-row narrow row head	3,650.00
NH 717 Single Row Head, 9 Knife Cutter Bar	1,795.00
JD #12 w/single Row Head	150.00

USED TILLAGE SPECIALS

Ford 4-18" Semi-Mount Spring Reset	2,450.00
MF 720 Disk Harrow, 28 Blade, 26" Blades w/hyd cylinder	3,950.00
Brady 9 tooth chisel plow	1,050.00
JD KBA Disc	325.00
Oliver Disc 9'	1050.00

USED GRAIN DRILLS

John Deere 17 x 7	\$750.00
Co-op 15x7 Fert. Grain Drill w/grass seed attach.	750.00
MF 21x7 Plain	1,650.00

MISCELLANEOUS

New Set 18.4x30 Snap on Duals w/New Goodyear 6 Ply Tires	\$1,050.00
---	------------

USED HAYBINES

New Holland 479	\$2,750.00
-----------------	------------

USED PLANTER SPECIALS

Tag 11650 John Deere 1250 - 6 Row Plateless	\$2,350.00
11941 John Deere 494A - 4 Row	650.00
11934 John Deere 494A - 4 Row	950.00
1229 Ford 4 Row	775.00

USED COMBINE SPECIALS

AC - C w/4 Row Corn Head 14' Platform	\$6,750.00
Cockshutt 427 w/Power Steering & 10' Platform	1,450.00
MF 410 Diesel w/cab, 13' platform, 3 row N.R. corn head	8,250.00
AC Model E w/10' platform, pickup reel, 2 row corn head, real clean	5,750.00
JD 55 Corn Soybean Special 12' head	9,700.00

**SPECIAL SAVINGS
FOR YOU**

Planter and Tillage Tool
Replacement Parts

February
OVER-THE-COUNTER Sales

5% Cash Discount --- \$50.00 to \$100.00
10% Cash Discount --- \$100.00 or More

SPECIAL

Suit-Case Weights
for John Deere Tractors
\$39.50 Each



Evergreen Tractor Co. Inc.

30 EVERGREEN RD., LEBANON, PA 17042, PHONE (717) 272-4641

Valentine table

(Continued from Page 98)

can about 10 to 12 inches from the surface. When dry, lift stencil and move on to the next area.

You could spray-stencil an all-over pattern, or just a border. It might be best to experiment first on newspaper. And while you're spraying, do paper napkins and plates as well.

Valentine lace as baskets for sweets? It's a cinch to do with paper doilies. The secret: two doilies are layered with glue, then molded while still moist. Here's how. Place a doily on a piece of plastic wrap and spread with glue. Top with a second doily, and over that place another piece of plastic. Then lift the whole works and mold around a small bowl or the lid of a can. Secure with a rubber band, and flare out doily edges. When glue has dried, remove mold. Finish basket with stiff paper handle and ribbon. Glue bowl to base made from a gift-ribbon spool.

The glory of your table is a centerpiece that looks like a candy cottage, but is really made from cardboard, paint and glue.

Take a small box (maybe 5 to 6 inches square) and spray with pink spray paint. The roof is built on the box lid: score a piece of corrugated paper for the roof, and cut triangles of cardboard to fit under it as "eaves." Glue them to two ends of lids, glue the roof in place, and spray everything white. Now comes the fun of adding the "icing" trim: take your trusty bottle of glue and draw with it - make squiggles, dots, hearts, even frames for windows and doors. (Don't forget to "frost" the edges of the corrugated roof) When dry, paint with acrylic or tempera paints. Complete the cottage by gluing on foil windows, paper shutters, and pink paper hearts for roof tiles. Then glue the cottage on heart-shaped cardboard base that's been sprayed cherry red and decorated with a paper heart "path."

You could store little gifts under the roof of the cottage, or - another gift idea - why not make mini-aprons, with spray-stenciled hearts? Whatever you do, it will come out right - if you do it with love!

Northern Berks Co.

4-H elects officers

MOHRSVILLE - Election of officers was held at the January 25 meeting of the Northern Berks County 4-H Dairy and Swine Club.

Connie Ohlinger was named president while Patty Driesbach was selected as vice president. Other officers selected were; Carol Driesbach, secretary; Harold Dietrich, treasurer; Wendy Yoder, historian; Tammy Schlappich, news reporter; Michelle Christman, game leader; and Chris Dietrich, song leader. Tammy and Lee Schappich hosted the meeting. Susan Hollenbach joined as a new member.

The topic for the March meeting will be Hoards Dairymen Judging. Any one interested in joining the club should contact leader Elwood Ohlinger, 215-926-2904.

xxx

Good stock can be made from cooked as well as from raw chicken bones and carcasses, according to the National Broiler Council. If the stock from cooked chicken is somewhat weak, mix it with canned chicken broth or add chicken bouillon cubes or a dried chicken soup mix to enhance the flavor.

POWER KING
sets a fast pace
on tough jobs



Big acreage... heavy loads rough going - Power King carries through without missing a beat. The reason? 12, 14 and 18 hp engines applied through Power King's all-gear drive deliver almost 100% power to the big drive wheels. That's why you move right along with a 60" mower, load fast with a 1/2 ton bucket, bulldoze, clear a 48" path of snow in a hurry.

American-built Power King is a machine, not a toy! Automotive clutch, transmission, differential, 1 1/2" axles, for example.

SALES & SERVICE

NORMAN H. ZIMMERMAN
Myerstown, R.D. 2 Phone (717) 866-4695
1/2 mile west Myerstown - West Main St.
SHOP HOURS:
Mon. & Fri. - 8 to 8 Sat. - 8 to 12
Wed. & Thurs. - 8 to 5 Tues. Closed