

OPEN HOUSE

NEW BOLTON CENTER

UNIVERSITY OF PENNSYLVANIA

SATURDAY, FEBRUARY 17, 1979

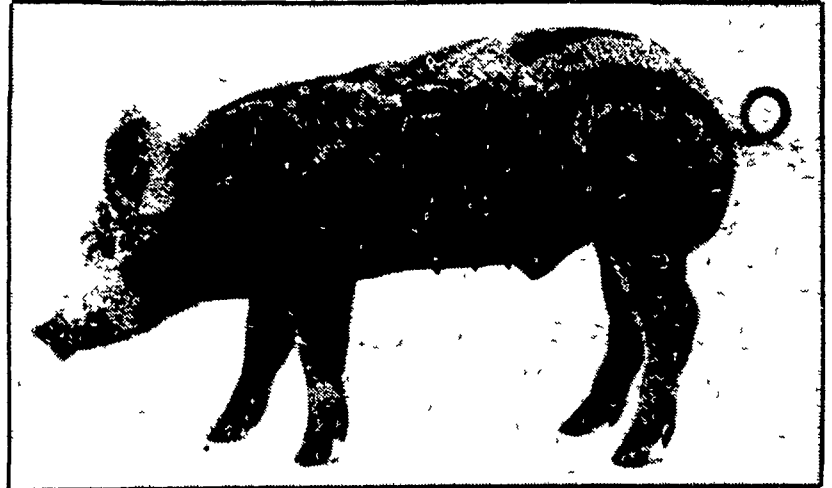
10 A.M. to 3 P.M.

SNOW DATE — SATURDAY, FEBRUARY 24

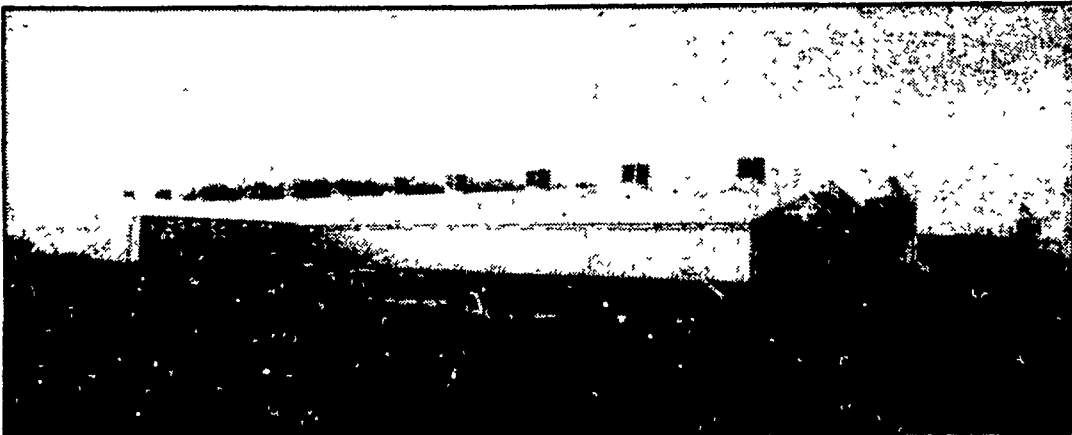
— FEATURING —

★ NEW FACILITIES - OFFICES, BREEDING AND GESTATION BUILDING, FARROWING AND NURSERY PRACTICALLY COMPLETED.

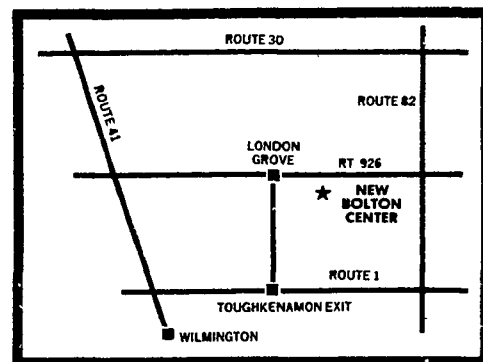
★ FLUSH MANURE SYSTEMS WITH RECYCLING PLANTS & ABOVE GROUND STORAGE OF LIQUID SLURRY.



★ NEW FEEDER PIG PRODUCTION UNIT BY P.P.A.B. Ltd.



BREEDING & GESTATION BUILDING



Route 1 to Toughkenamon Exit (2 miles West of Kennett Square). Follow signs.



THIS INSTALLATION IS BUILT TO PRODUCE AN INDEPENDENT SUPPLY OF FEEDER PIGS FOR FARM PARTNERS IN THE CORPORATION.