

Atlantic membership meetings announced

LANCASTER — Atlantic Beeders Cooperative, headquartered here, will begin holding District membership meetings next week. Programs will include reports by district directors and management personnel, and election of membership representatives. Tickets will be sold for meals which are included with all meetings.

Following is a list of scheduled meetings. (DD) indicates that Atlantic's meeting will follow the County Extension's Dairy Day program.

District 1
Bucks-Montgomery-Easter Berks-
Feb. 15, 12 noon

District 2
Chester-Delaware - Feb. 14, 10:30 a.m. (DD)
Delaware State - Feb. 14, 7:30 p.m.

District 3
Lebanon-Southern Dauphin-Western Berks-
Feb. 13, 10 a.m. (DD)

Northern Dauphin-Northumberland-
Feb. 13, 7:30 p.m.

District 4
Northern Lancaster - Feb. 15, 7 p.m.

District 5
Southern Lancaster - Feb. 22, 7 p.m.

District 6
York - Feb. 22, 10 a.m. (DD)

District 7
Cumberland - Feb. 21, 10 a.m. (DD)

District 8
Adams - Feb. 23, 10 a.m. (DD)

District 9
Franklin - Feb. 20, 10 a.m. (DD)

District 10
Fulton - Feb. 13, 10 a.m. (DD)

District 11
Bedford - Feb. 14, 11 a.m. (DD)

District 12
Southern Blair-Southern Huntingdon-
Feb. 13, 7 p.m.

District 13
Northern Blair-Northern Huntingdon-Centre-
Feb. 14, 7 p.m.

District 14
Somerset - Feb. 15, 7 p.m.

District 15
Fayette - Feb. 14, 7 p.m.

District 16
Greene - Feb. 14, 11 a.m. (DD)

District 17
Washington - Feb. 13, 7:30 p.m.

District 18
Westmoreland - Feb. 15, 12 noon

District 19
Indiana - Feb. 22, 10 a.m. (DD)

District 20
Cambria - Feb. 22, 7:30 p.m.

District 21
Clearfield - Feb. 15, 10:30 a.m.

District 22
Jefferson - Feb. 15, 1 p.m.

District 23
Clarion - Feb. 20, 7:30 p.m.

District 24
Venango - Feb. 23, 10:30 a.m. (DD)

District 25
Armstrong - Feb. 26, 10:30 a.m. (DD)

District 26
Butler - Feb. 21, 10 a.m. (DD)

District 27
Beaver-Lawrence - Feb. 13, 10:30 a.m. (DD)

District 28
Mercer - Feb. 20, 10:30 a.m. (DD)

District 29
Western Crawford - Feb. 22, 12 noon

District 30
Erie - Feb. 21, 12 noon

District 31
Warren - Feb. 21, 8 p.m.

District 32
Eastern Crawford - Feb. 23, 7:30 p.m.

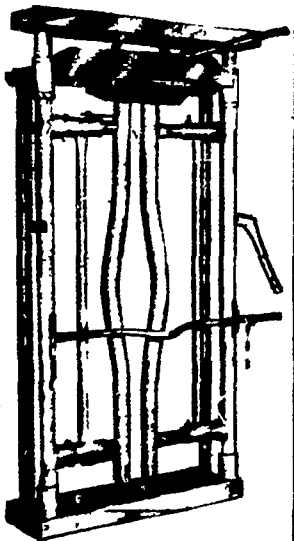
Goodling speaks

YORK - "We must take a second look at the accelerated cost of energy and Social Security payments" was a statement made by Representative William Goodling, 19th Congressional District at a meeting in York of Adams, Cumberland and York County National Legislative Committees of the Pennsylvania Farmers' Association, held recently.

Goodling discussed with the farmers the rapid exit of small businesses and small farmers. The reason seems to be increased government regulations, more paper work, increases in Social Security tax payments and increased workman's compensation costs. Workers are receiving about \$4,000 per year tax free benefits while the farmer has to pay his own Social Security, life insurance, hospitalization insurance etc.

Goodling is concerned about the way Taiwan was dropped cold by the United States in favor of Red China. He said that there was no need to give any concessions to China to get rid of Taiwan.

AUTOMATIC HEAD GATE FOR CATTLE



"Give Us A Try Before You Buy"

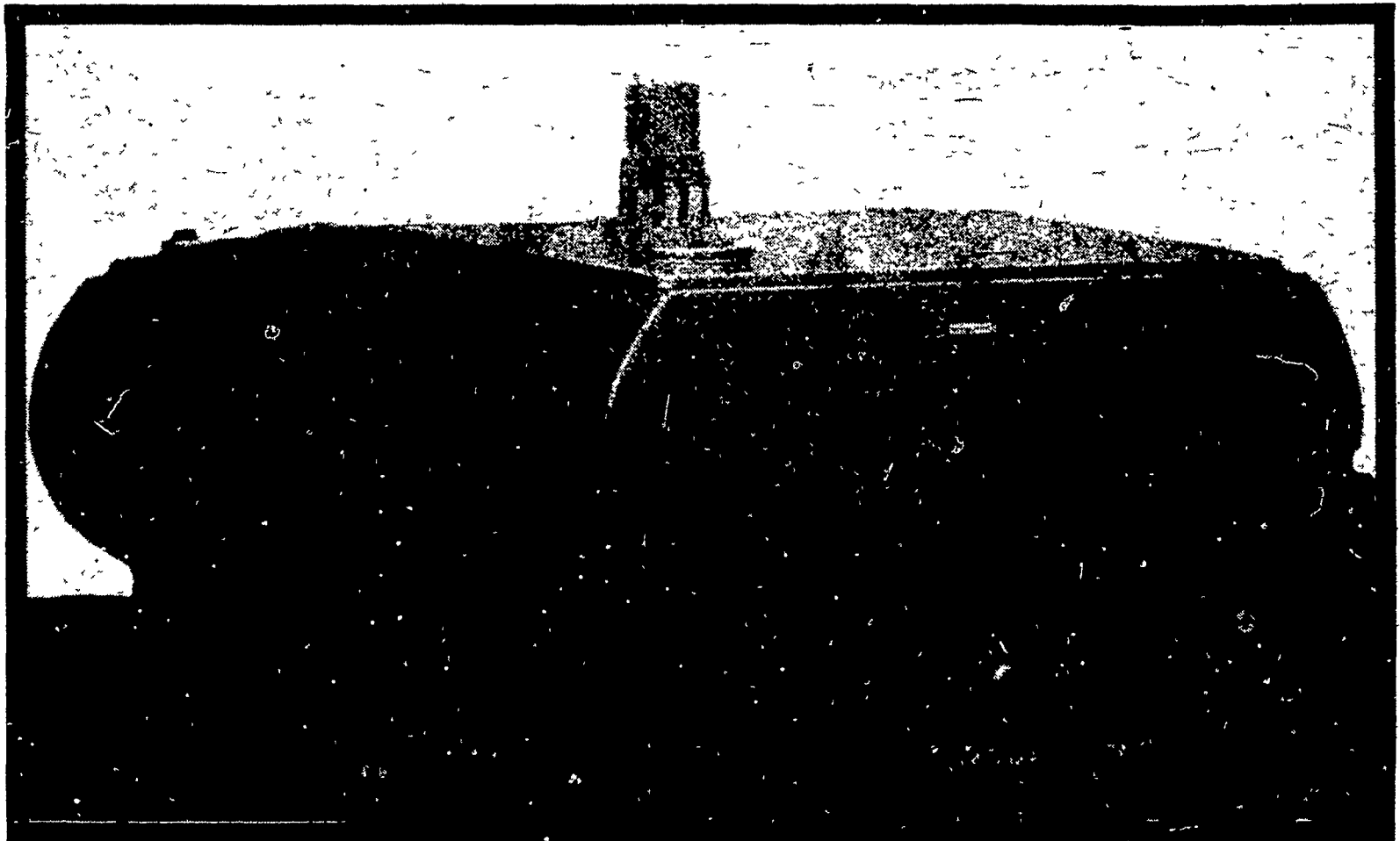
DANIEL Z. ZIMMERMAN

Animal Health Supplies & Livestock Equipment

Located between Leola & Talmage along Rt. 772 RD1, Leola, Pa. 17540 717-656-6982

MUELLER
Bulk Milk Coolers®

**MODEL 500 MW TANK
FOR THE FARMER WHO WANTS QUALITY
IN A LOW POURING HEIGHT,
FAST COOLING, EASY CLEANING TANK . . .**



USED TANKS FOR SALE

★ 2000 GAL. MUELLER ★ 600 GAL. MUELLER ★ 700 GAL. MUELLER

FOR MORE INFORMATION CONTACT:

RUFUS BRUBAKER REFRIGERATION

"We've Been In Business Since 1946 & Selling Milk Tanks Since 1955"

RD5, MANHEIM, PA. 17545

PH: 717-665-3525

Authorized MUELLER DEALER

DEPENDABLE 24 HOUR SERVICE