

4-H club to meet

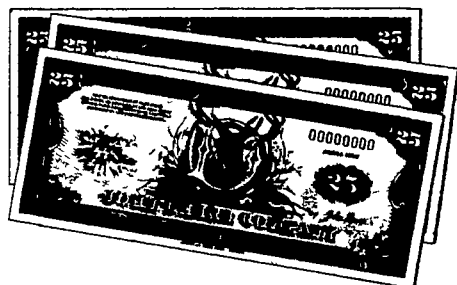
EAST BERLIN - Central Dairy 4-H Club will meet on Monday, February 12 at 7:30 p.m. at the Rodman Thompson farm, Admire Road, East Berlin R1.

The program will be judging cows for the Hoard's Dairyman contest. Anyone interested in becoming a member of this club should attend this meeting.



JOHN DEERE COMPANY

JOHN DEERE PAYS YOU TO ORDER 1979 TILLAGE OR HAY TOOLS IN 1978:



Get up to \$900 in John Deere dollars plus a tax credit

Order any new John Deere equipment listed below before the dates specified and you'll earn from \$75 to \$900 in John Deere dollars you can exchange for goods or services at our store. And we'll give you our best deal on the new tool.

BUYER BONUS IN JOHN DEERE DOLLARS FOR ORDERS SIGNED THROUGH

EQUIPMENT APR 30, 1979

DISKS:

100 Integral	\$50
110 and 111	\$75
210	\$125
310 340 and 1630	\$150
220 230 350 440 1640	\$200
330 331 and 360	\$300
370	\$550

CHISEL PLOWS:

1603M Integral 1608R Drawn Rigid	
1610 Integral Rigid 1610 Drawn Rigid (11-foot) 1611R Drawn Rigid	\$75
1620 Drawn Flexible 1623 Drawn Flexible (23- to 27-foot)	\$125
1610 Drawn Flexible (23-foot) 1610 Drawn Rigid Folding (19-foot)	
1623 Drawn Flexible (29- to 41-foot)	\$175
1610 Drawn Flexible (29- to 37-foot)	\$250
1650 Folding	\$550

EQUIPMENT FEB. 28, 1979 JUNE 30, 1979

BALERS:

336	\$200	\$125
346 and 410	\$300	\$175
466 and 510	\$400	\$250

MOWER/CONDITIONERS:

1207 and 1209	\$250	\$150
1214	\$350	\$200
1380	\$400	\$250

MOWERS

350 and 450	\$75	\$50
-------------	------	------

RAKES

567 650 and 660	\$75	\$50
670 and 671	\$100	\$75

CHOPPER

16A	\$175	\$100
-----	-------	-------

SHREDDER

27	\$200	\$125
----	-------	-------

WINDROWERS:

800	\$450	\$275
830	\$600	\$350
2280	\$900	\$550

This offer is subject to equipment availability



ENFIELD EQUIPMENT INC.

Whiteford, Md. 21160
Phone: 301-452-5252

Open House

(Continued from Page 34)

been pegged at around 8600. The young pigs will be weaned at three weeks of age and leave the premises at eight weeks.

The first boars and gilts are to arrive here as early as Feb. 19. They're being supplied by The Pig Improvement Company, the world's largest supplier of gilts and boars.

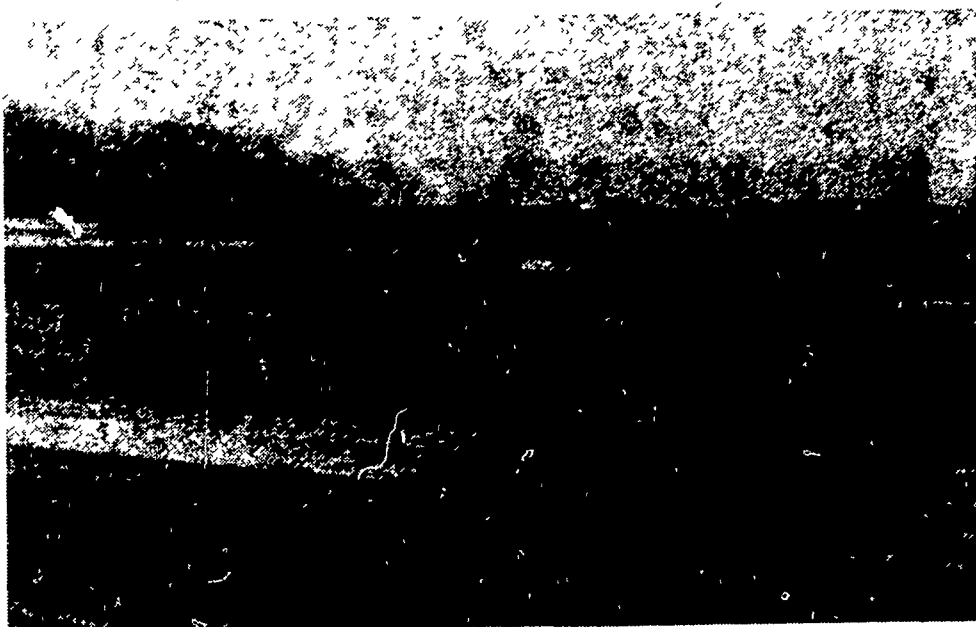
When the new center is in full operation, two managers will work closely with two

students at a time for two-week periods. It is envisioned that students will be able to pick up considerable practical knowledge in swine handling and management, including reproduction, feeding, farrowing, and disease control - both preventive and surgical. Presently some farmers opinionize that some veterinarians are not as fully trained for swine work as what they'd like. That might soon change.

"The training plan has been tested and worked very well," commented Baile in an interview last Fall.

A corporation, the new facility is to be known simply as PPAB Limited. There are ten shares of stock, with six farmers having one each, and two others having two shares each. Each share of stock will get half of the feeder pigs every five weeks.

Construction is being handled by Sand Livestock Systems, Inc., of Columbus, Neb.



The nursery house of the feeder pig unit at New Bolton Center is in its initial phases of construction. In the background is the manure filtration area and Slurrystore.

Meat packer

to stop violation

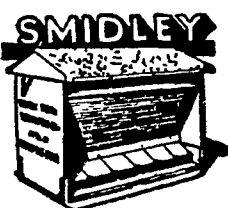
NEW YORK, N.Y. - R&D Investments, Inc., a Fleetville, Pa., firm doing business as Edwards Bros. Packing Co., has been ordered by the U.S. Department of Agriculture to stop violating the bond requirements of the Packers and Stockyards Act.

The corporation, which formerly bought livestock for slaughter in New York, Maryland, Pennsylvania, New Jersey, Ohio, and Virginia, filed for bankruptcy and is not operating now.

The firm consented to the order and waived oral hearing, without admitting or denying the charge in an administrative complaint filed by the department.

Administrative Law Judge Dorothea A. Baker ordered the firm to cease and desist from engaging in business as a packer without providing a bond or its equivalent.

The case and desist order, like a permanent injunction, was issued to insure the firm's future compliance with the P&S Act.

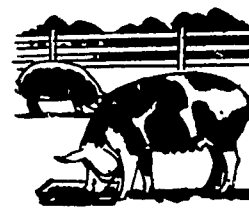


FEEDERS

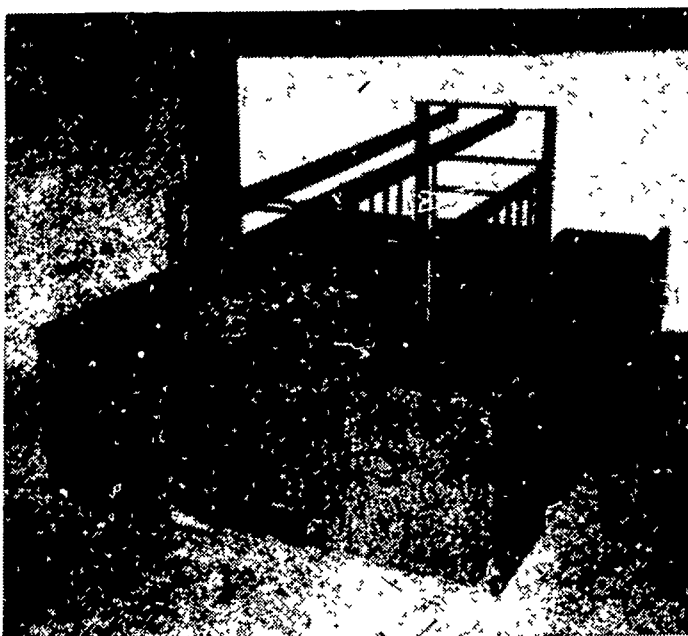
FARMER BOY PRODUCTS

RD4, Box 135, Myerstown, PA 17067

SALES: LEON HOOVER, (717) 866-5692



FARROWING EQUIPMENT



Farmer Boy Farrowing Stalls are built around this crate with basic high-strength construction - employing structural steel tubing, angle iron and 14 ga. steel panels, protectively painted.

END ARCHES of 2x2-inch angle iron provide a firm support for fastening crates to floor.

TWO TOP SOW GUARDS of 2-inch steel tubing.

HORIZONTAL SIDEWALL BARS are 2-inches and vertical bars are 5/8-inch steel tubing.

SIDEWALLS ARE ADJUSTABLE vertically and laterally to accommodate a slim or small sow and prevent problems with the sow twisting.

BOLT ADJUSTMENTS provide three vertical adjustments as well as inside measurements of 22, 23 and 24 inches, allowing user to turn in either one of the side panels or both.

THINKING HOGS? REMODELING OR BUILDING?

THINK FARMER BOY FOR A COMPLETE SYSTEM
WE SPECIALIZE IN SWINE SYSTEMS - FARROWING, NURSERY, FATTENING - OPEN FRONT OR CONTROLLED ENVIRONMENT.

FEATURING:

- Ultimate in ventilation by Chore Time
- Farrowing stalls, gestation stalls, fencing, caged nurseries - all designed and built by Farmer Boy for long life, heavy duty, excellent workmanship
- Flooring - Plastisol coated wire mesh for the ultimate; Tender Care galvanized woven wire flooring; also concrete slats
- Feeders - Smidley, Shenandoah
- Feed Bins & Flex Augers by Chore Time
- Farmer Boy Control System - For curtain or louver, automatic control on thermostat
- Stanfield Heating Pads
- Arato Water Nipples
- Modular type farrowing and nursery houses
- Hog Shelters - portable fattening, 40 to 70 head units