

**PENNSYLVANIA LANDRACE ASSOCIATION
STATE SHOW AND SALE**

SATURDAY, MARCH 10, 1979

Show 9:00 A.M. Sale 1:00 P.M.

Location: Lebanon Area Fair Grounds, Inter-
section of Cornwall and Evergreen Rds.,
Lebanon, PA.



60 HEAD 60

Landrace, the Universal Breed.

BRED GILTS - OPEN GILTS - BOARS

LANDRACE TRADE MARKS

The Original lean meat breed.
The world's best mothers.
More capacity to produce.
An asset to any herd.

Lunch Available - by Lebanon County 4-H Livestock Club.

FOR CATALOGS WRITE TO:

LARRY G. BAUM

Secretary Penna. Landrace Assoc.
RD5, Box 280, Elizabethtown, PA 17022
Phone: 717-367-2882

**ANNUAL
CONSIGNMENT SALE**

SHARTLESVILLE FARM SERVICE

FEBRUARY, 24, 1979

STARTING TIME: 9:30 A.M.

Location: Two miles East of Shartlesville on Old Rt. 22 - five miles West
of Hamburg.

**QUALITY FARM EQUIPMENT
HOUSEHOLD ITEMS AND ANTIQUES
LARGE EQUIPMENT SALE - APPROX. 11:00 A.M.**

Close-OUT Sale of Robert Spatz

- 1 Farmall 404 Gas Cultivator for 404
- 1 MC-Cormick #4 E. hammermill
- 1 Kosh Belly Mount 7 ft. Mower for H or M Farmall
- 1 Baler #47
- 1 160 Massey Spreader
- 1 5-Section Harrow
- 1 M-C Chopper (like new)
- 1 M Diesel Tractor
- 1 Rubber tire wagon w/side
- 1 Model 60 McDade Crimper
- 1 M.M. Side Rake
- 1 New Holland 616 Harvester Corn Cutter & Pick up Head
- 1 J.D. Model R Spreader
- 1 New Webb for R-Spreader
- 1 Disc 7 ft.
- 1 Cultipacker
- 1 Badger Blower
- 1 International 51 Chuck Wagon
- 1 Lamco Chuck Wagon
- 1 Harvey Racine 24 Elevator w/1 H.P. Motor
- 1 Farmer Grass Seeder
- 1 Pair Tractor Chains for 13-38 tire
- 1 Graham Home Plow 7 Tooth
- 1 Corn Harvester
- 1 Three Bottom Plow

- 8 Ft. Disc Harrow
- N.H. 365 tank spreader
- J.D. grain drill
- N.I. 272 conditioner 2 yrs.
- M.F. 15 Grinder Mixer 6 mo.
- Little Giant 38 ft. elevator 1 yr.
- 3 Bottom plow fast hitch for International
- 4 Bottom fast hitch
- 90 Electric J.D. Lawn Mower
- 1967 Chev. Truck Chassis w/dual wheels
- New Holland No. 6 forage wagon w/roof w/3 beater, 10 ton running gear, front & rear loading
- J.D. 1240 4-row plateless planter with insecticide and herbicide
- Self feeding wagon
- New hay wagon McCreary 8 ton running gear
- Int. 46 baler w/thrower
- Bale wagon
- Ford plow 3 pt.
- Ford Cult. 3 pt
- Oliver 2 row corn planter 3 pt
- Snow Plow for utility tractor
- J.D. Manure spreader
- Cult. for J.D. #MT tractor
- 6 Ft. Disc
- A.C. belt blower
- Weed sprayer I & H working order
- 7 Ft. disc
- 10 Ft. dump hay rake - good condition
- #36 N.H. flail chopper
- 12 Ft. post hole digger fits H or M Farmall
- 2 row potato planter
- Feed cart
- Hydraulic cylinder
- Cow clipper
- Neck chains
- Complete Kesco milk mover
- BB4 vac. pump
- 76 DeLaval
- Brady field cult.
- 2 lawn chairs
- 2 milk cans
- Color hanging lamp
- 2 wooden cloth trees
- Old wash board
- Iron skillet
- Old iron grill
- Auto horn
- Gas heater for k937 Ford
- Steel traps
- Coal bucket
- Doll crib
- Doll cradle
- Small tools
- Hand cult.
- Baby crib
- Oak porch rocker
- China and glass ware
- Numerous items to come

ALTERNATORS:

- 1 15 KW New
- 1 40 KW 3 Phase
- 1 15 KW Used

COMBINES:

- 101 Int. w/10 Head No. 222 Row Corn Head
- 26 Massey Harris
- F-Gleaner w/13 Ft. Grain Head, 330 Corn Head, Excellent Condition
- 1974 300 M.F. w/10 Grain Head, 33 QA Corn Head, Excellent Condition
- G-Gleaner w/13 Ft. Grain Head, 440 Corn Head, Excellent Condition

TRACTORS:

- A.C. D-14 Tricycle
- J.D. MT
- A.C. D-14 Wide Front End, Front Loader
- A.C. 160 Diesel
- A.C. New 5040 Diesel
- A.C. New 5050 Diesel
- A.C. 190 Diesel
- A-Farmall
- H-Farmall
- Farmall C
- J.D. 38 Harvester 2 row head
- M.F. No. 16 Grinder Mixer (94 Bu)
- Steno Mat 4-16 Plow Fully Mounted
- Dunham 10 Ft. Transport Disc Harrow
- N.I. 41 Ft Elevator w/8 HP Gas Engine Like New
- Int. 175 Manure Spreader
- Badger Forage Blower

FOR INFORMATION CALL (215) 488-1025

AUCT. - DENNIS F. WAGNER

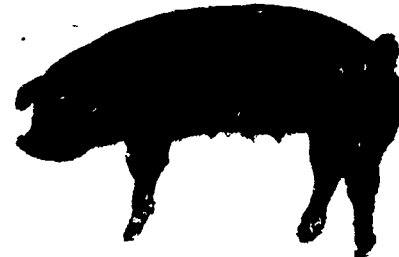
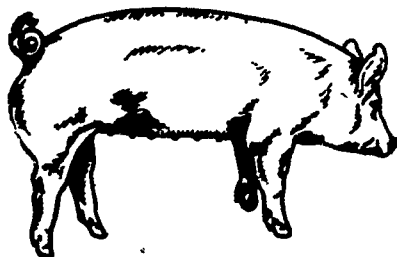
Food Being Served By The Appalachian Snowmobile Club.

Lawrence, Leon and Thomas Arnold
9th PRODUCTION

**SALE
OF**

Yorkshires

Durocs



AUCTIONEER, Harry Bachman, Annville, Pa.

60 BRED GILTS 40 OPEN GILTS

Bred Gilts are hand mated. Select gilts with due dates to fill your farrowing schedule.

30 BOARS

Boars will be seven to eight months old. Very aggressive. Ready for neavy service.

**FRIDAY AFTERNOON,
FEB. 23, 1979 1:00 P.M.**

SALE TO BE HELD AT THE

Lebanon Area Fairgrounds

(CORNWALL & EVERGREEN ROADS, 1½ MILES SOUTH OF)

Lebanon, Pa.

FOR CATALOGUE WRITE TO
LEON L. ARNOLD R.D. 7, BOX 705, LEBANON, PA. 17042
OR CALL 717-273-5880
FREE LUNCH

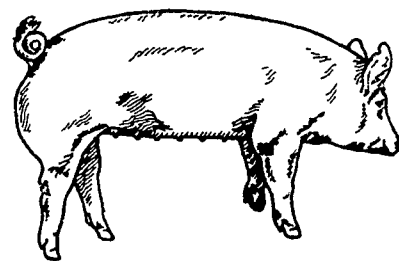
**HOUVALE FARMS
Yorkshire Production Sale**

MARCH 2, 1979

SALE 1:00 P.M.

LOCATION: Lebanon Area Fairgrounds, Evergreen Road and Cornwall Road, Rocherty Road East off of Route 72, Lebanon, Pa.

YORKSHIRES



SELLING:

**50 BRED GILTS
30 OPEN GILTS
20 BOARS**

For Catalogue, Write To:

ELWOOD E. HOUSER

R.D. #5, Box 70, Lebanon, PA. 17042
Phone: (717) 272-5798 or (717) 273-2921

AUCTIONEER: HARRY BACHMAN