

Public Sales Register

FRI MAR 30 - Dairy Herd Dispersal, Kenn-Crest Farms, Ed Kennedy, Owner, Green Park, Perry Co., Art Kling, Auctioneer

FRI MAR 30 - 9 30 A M Sale of Full Line Machinery (7 tractors), Dairy Equipment & Shop Tools. Located in Centre Co., 5 miles East of Old Fort, or 2 1/2 miles West of Springs Mills, Pa., turn off Rt. 45 on Penns Cave Rd Mark Glick Auctioneer. Estate of M L Robert Rishel, Martin C. Rishel, Adm

FRI MAR 30 - 5 P M 16th Annual Spring Sale, Kempton Community Center, Northern Berks Co., Household Goods & Antiques. Receive Household Goods, Antiques March 26 to 28, 4 P M to 8 P M each day only No appliances, junk will be refused 12 Auctioneers, everything sold on commission basis. Write "Sale" Box 42, Kempton, Pa 19529 or call 215-756-6511

SAT MAR 31 - 11 A M Atglen Fire Co Sale at the Atglen Fire House, Atglen PA, Chester Co John Umbler and Leon Kurtz Auctioneers

SAT MAR 31 - 11 A M Consignment Horse Sale at the Keister's Middleburg Auction Sales, Inc Rt 522, 3 miles East of Middleburg, 5 miles West of Selinsgrove, Pa Don & Walt Keister, Owners Larry Long, Auctioneer

SAT MAR 31 9 30 A M Located in Centre Co., 2 1/2 miles East of Aaronsburg, Pa on Rt 45 A good line Shop Tools, Lumber, Guns, & Some Furniture Mr & Mrs Manasse A Yoder Mark Glick Auctioneer

SAT MAR 31 - 9 A M Public Sale of Real Estate, Antiques &

Collectibles & Household Items Located 3 miles South of Elizabethville, Pa., 2 1/2 miles South off Rt 225 on the Car sonville Rd Watch for sale signs along Rt 225 on day of sale Estate of Anna E Miller Lee D Dockey Auctioneer-Estate Liquidator-Appraiser

SAT MAR 31 - 10 A M 16th Annual Spring Sale, Kempton Community Center, Northern Berks Co., Kempton, Pa Household Goods & Antiques, Lawn & Garden Equipment March 26 to 28, 4 P M to 8 P M each day only No appliances, junk will be refused 12 Auctioneers, everything sold on commission basis Write "Sale" Box 42, Kempton, Pa 19529 or call 215-756-6511

SAT MAR 31 - 10 A M Public Auction of Real Estate, Farm Equipment, Antiques, Butcher Equipment & Other Tools Located 1 mile East of Pitman in Eldred Township, Schuylkill County, PA, 2 miles East off Route 125, 6 miles North of Hegin, 10 miles South of Shamokin Mr & Mrs Kermit P Stehr and Mr & Mrs Edward Q Stehr, Owners George N Deibert, Auctioneer

SAT MAR 31 10 A M Public Sale of Farm Equipment and Household Goods, Antiques Located 10 miles South of Lancaster, East off Rt 272 on Fairview School Rd, or 3 miles North of the Buck Earl & Kathryn Finnefrock, Owners Gary L Shirk Apprentice Lloyd H Kreider and Randal V Kline, Auctioneers

SAT MAR 31 Complete Line of Farm Machinery and Household Goods Harry Arndt, Owner, Ickesburg, Perry Co., PA Art Kling, Auctioneer

SAT MAR 31 - 9 30 A M Public Auction of Farm Equipment Located between Hamburg & New Ringgold, Travel East from Rt 61 along Rt 895 for 1 1/2 miles to first blacktop road (left or west) to farm, Schuylkill Co PA Sale for HAROLD BENSINGER Ralph W Zettlemoyer Auction Co, Auctioneers

SAT MAR 31 - 10 A M Public Sale Real Estate, Tool, Household Goods, Antiques Located in Leacock Twp in the village of Intercourse, on corner of Rt 340 & Evergreen Ave Terms by Christ L & Aquilla Smoker Auctioneer Steve Petersheim

SAT MAR 31 - Sechrist Sales Co 2nd Annual Spring Consignment Machinery & Tool Auction Deadline March 5, mail list to Box 176, Fawn Grove, Pa 17321 or see Bob at S S Co auction Mondays

SAT MAR 31 - Farm Equipment Dispersal for Franklin Irvin located 1 mile South of Shirleysburg, Huntingdon Co, Pa along Rt 522 Ralph W Horst Auctioneer

APRIL

MON APR 2 - 9 30 A M - Consignment Sale, located at S Race St, Myerstown, PA 17067 Sale held by Wenger's Farm Machinery, Inc

TUES APR 3 - Real Estate, Consisting of a 94 Acre Farm & Farm Machinery Emmett E Kumer Owner, Newport, Art Kling Auctioneer

WED APR 4 - Spring Lamb & Goat Sale at the Belleville Livestock Market, Belleville, Pa

THURS APR 5 - 11 A M Lamb & Goat Sale at the Keister's Middleburg Auction Sales, Inc Rt 522, 3 miles East of Middleburg, 5 miles West of Selinsgrove, Pa Don & Walt Keister, Owners Larry Long, Auctioneer

THURS APR 5 - 12 Noon Monthly Cow Sale at the Melvin Kolb, Inc Sales Barn, 2220 Dairy Road, Lancaster, Pa. 17601 Dennis Kolb, Sales Manager, Robert Mullendore, Auctioneer

FRI APR 6 - 11 A M Special Draft Horse & Mule Sale at New Holland Sales Stables, New Holland, Pa

FRI APR 6 - Complete line of Farm Machinery & Dairy Herd Dispersal, including 50 Head of Open Heifers R S Kell & Art Kling, Owners, Landisburg, Pa

SAT APR 7 - C H Wolgemuth and Sons Annual All Day Consignment Sale, located 4 miles West of Manheim, Lancaster County, Pa C H Wolgemuth, Sale Manager

SAT APR 7 - 9 30 A M Large Inventory Reduction Sale, 75 Farm Tractors, 25 Industrial Units & 200 pieces Farm Machinery Located at Marshall Machinery, R D 4,

Honesdale, PA Auctioneers Rentzel, Goodrich & Manassey

SAT APR 7 - 9 30 A M Pirrung's Big Once a Year Auction of Farmer Owned Equipment. Located on Rt 371 midway between North Cohocton & Cohocton, NY 300 pieces of virtually every kind of farm tool expected, plus the featured Dispersal of all grain equipment of Allen & McDowell of Springwater, NY Pirrung's Auctioneer, Inc., 716-728-2520 Gerald Pirrung, Ulysses, Pa 814-848-7401

SAT APR 7 - 10 A M Public Sale of Farm Machinery. Located in Clearfield Co., take exit 21 off I-80, 3 miles East of Kylertown, Pa on Rt 53 Robert C Allen, Grassflat, Pa Mark Glick, Auctioneer.

SAT APR 7 - 1 P M. Special Feeder Cattle, Feeder Pig and Stock Ewe Sale to be held at the G & M Livestock Market, Duncansville, PA To consign call Sherman Glick, Lewistown (717) 248-0960 or Fred McCarty, Dry Run (717) 349-2393.

HIGHOLME MILKING HERD DISPERSAL

Located just off Rt. 14 in Grover, PA, 3 miles from Canton, 28 miles from Williamsport.

WEDNESDAY, FEBRUARY 21

1:00 P.M. Sharp

48 REGISTERED HOLSTEINS 48

1978 Herd Average 15,259M, 4.0 test, 603F. Watch for full list in next weeks Lancaster Farming on this good quality sale.

Owners - **GERALD & VIRGINIA HIGH**

Sales Managers **Gordon Wood & Ronald Wood** Mansfield, PA 717-549-4901

For the most in advertising coverage and preparing your sale - call Wood's Auction Service.

PUBLIC SALE

FARM EQUIPMENT - SHOP EQUIPMENT WEDNESDAY, MARCH 7, 1979

10:00 A.M.

Located: Greenline Service Corp., Culpeper, Va. Along Rt. #15 & 29

TRACTORS - TRUCKS

806 Farmall (new engine)
D-17 AC tractor w/3 pt (wide front)
4230 w/cab, P. S. H and A
Wheel Horse 8 hp lawn & garden tractor
4020 John Deere tractor
Wards lawn & garden tractor
New Holland lawn & garden tractor
430 John Deere tractor (N.F.)
JD 3010 tractor (gas)
IHC 544 utility tractor
Grain trailer (single axle)
Landoll 42' trailer for equip. 1975

HAY EQUIPMENT & MISC.

Bush hcg box scraper
502 - 3 pt. Bush hog (new)
405 - 3 pt. Bush hog (heavy)
John Deere - B 14x7 drill
30' Little Giant hay elevator
Farm hand loader
1500 power seeder (nice)
18.4 - 28 set of dual wheels
4520 weather enclosure
NH 271 baler
NH 68 baler
NH 50 thrower
501 Ford 3 pt mower
John Deere 6" grain auger
Waldon tandem hitch
Servis land scrape rake
Front blade for 48 loader
45 Front loader
40 manure spreader
Bush hog 305 mower
Myers snow blade
New Holland tank spreader
54 John Deere manure spreader
Century tanks
Lely tool bar
Brady feed cart
Lamco forage body
Shaver Frt. Mt. post driver
48 loader for Waterloo
250 John Deere side mower (new)
1-row Imco cultivator
Space heater
John Deere A18 pressure washer
Misc. tractor weights
tractor wheels
Misc. implement & truck tires
John Deere misc. parts
Hardware (bolts & etc.)
78 John Deere blade (sharp)
Century sprayer equipment
Side winder 6' rotary mower

TILLAGE TOOLS

3-16 John Deere 3 pt. plow
110 John Deere disk (12'-10")
340 John Deere offset disk
2-1440 John Deere zero till planters
John Deere BWA disk harrow (11'-2")
IHC 470 disk harrow (13'-14")
Folding John Deere level action disk
1450 6-16 plow (very nice)
F-100 John Deere field conditioner
Spike tooth harrow (2 sec.)
15' A.W. disk harrow
RG 40 4-row cultivator
1460 Zero till planter
488 MF 6-row planter
1300 John Deere 6-30 planter
6' 3 pt. disk harrow
Oliver disk harrow

HARVEST EQUIPMENT

45 Combine w/grain head
AC Gleaner E w/grain head
New Holland 880 Harvester
Gehl Self Prop. (2 row) Harvester
P. U. head (NH)
Mower bar (NH)
2-row John Deere forage head
John Deere stack wagon (very nice)
55 Diesel combine
334N 3-row corn head
244 corn head

SHOP EQUIPMENT

Special tools JD
Dyno
Injection pump stand & acc. (Roosa-Master)

TERMS: CASH OR GOOD CHECK AUCTIONEER:

Blaine N. Rentzel
Box 222
Emigsville, Pa. 17318
Ph. 717-764-6412

Greenline Service Corp.
Box 804 2508 Tidewater Trail
Fredericksburg, Va. 22401
Ph. 703-373-7520

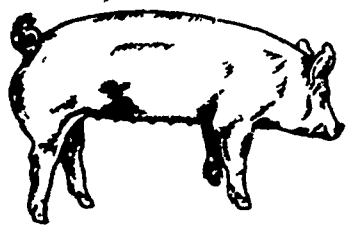
Greenline Service Corp. is discontinuing their business at Culpeper, Va., but will still conduct business at Fredericksburg, Va. Due to daily business, some items will be deleted, and others added. This is an Inventory Reduction Sale.

CALVIN H. LAZARUS & SONS

2nd PRODUCTION HOG SALE DUROC YORKSHIRE & SPOTTED

With guest consigners:

**Terry L. Bennecoff & Sons, Kutztown, PA
Hampshire and Berkshire
Harlin Wessner & Son, New Tripoli, PA
Landrace and Polland**



65 BRED GILTS, 40 OPEN GILTS, 35 BOARS

6 Pig guarantee on bred gilts

All stock guaranteed to be breeders.

SATURDAY, FEBRUARY 24

1:00 P.M.

Sale held at the farm of Calvin H. Lazarus & Sons, 4290 Bridge St., White Hall, PA, Lehigh Co., 4 miles north of Allentown on Rt. 145 to Columbia St., make left, second black top to right, first farm on left.

For Catalogs write or call

CALVIN H. LAZARUS

4290 Bridge St.
White Hall, PA
215-799-3375

Auctioneer
Ralph W. Zettlemoyer

Free Lunch