

"We believe in Soybeans" is Delmarva meeting theme

OCEAN CITY, Md. — The main theme of this year's 13th Delmarva Soybean Meeting is "We Believe in Soybeans", and to attest to this fact, Delmarva Extension Agents and agribusiness representatives have planned a program to help growers increase yields and improve marketing techniques.

The meeting is scheduled for Thursday, February 15, at the Convention Hall, Ocean City, and will get underway at 8:30 a.m. with exhibits, coffee and doughnuts.

William H. Henderson, secretary, Mid-Atlantic Soybean Association, Inc.,

Georgetown, Del., will preside over the morning session. Presiding over the afternoon session will be Joseph L. Newcomer, Grain Marketing Specialist, USDA, Washington, D.C.

Elanco Products Company will "kick off" the morning session with a film "We Believe in Farming" in keeping with the program theme.

Following this, Dr. Lorin Krusberg, professor, department of botany, University of Maryland, will discuss plant parasitic nematodes associated with soybeans, particularly on the Delmarva Peninsula. "Proper Techniques 'N

Shore Profits" will be the topic presented by Frank J. Webb, Extension agronomy specialist, University of Delaware Substation, Georgetown, Del., and Robert G. Miller, Extension agent, Salisbury, Md.

Growers often create problems associated with disease pressure when they decide to grow continuous soybeans. Dr. Robert E. Baldwin, Virginia Truck & Ornamentals Research Station, Painter, Va.; Dr. Robert Carroll, Plant Pathologist, University of Delaware; and Dr. James G. Kantzes, Plant Pathologist, University of Maryland, Salisbury, Md., will be

discussing diseases and controls in growing continuous soybeans.

Chemicals play an important role in insuring that growers obtain maximum yields. James H. McFadden, Chevron Chemical Company, Chestertown, Md.; and Gary L. Smith, Extension specialist, agricultural engineering, University of Maryland, will be on hand to discuss the "Chemical Facts of Life".

"Soybean Marketing Strategies" will be presented by the Vice-President of Merrill Lynch, Pierce, Fenner & Smith, Inc., Robert Purkey, Norfolk, Va.

Soybean growers will sit on the panel moderated by Joseph L. Newcomer and titled the "Average Yield Breakers". Panel members include William I. Guy, Salisbury, Md.; Clifton Parker, II, Frankford, Del.; and Gary L. Schoonover, Greensboro, Md.

Exhibits will be available for viewing before the

program, at lunch and following the program. The meeting is sponsored by the Cooperative Extension Services of Maryland, Delaware and Virginia and related agribusinesses. Tickets are available at Extension Service Offices and local agribusinesses.

The meeting is free and open to the public.

Safemark conference held

MIAMI BEACH, Fla. — "It's that little difference that can make a big difference in you. Safemark program," said Art Holst during the 1979 Safemark Conference held recently in conjunction with the 60th annual meeting of the American Farm Bureau Federation.

Holst, who is well-known as a National Football League referee, said, "We paint a line across the football field and we call it the goal line; getting there is another thing, and when you get there you have to have the right material. Holst challenged the

crowd to get involved, to be a problem solver and to speak the same language as the person to whom they are communicating.

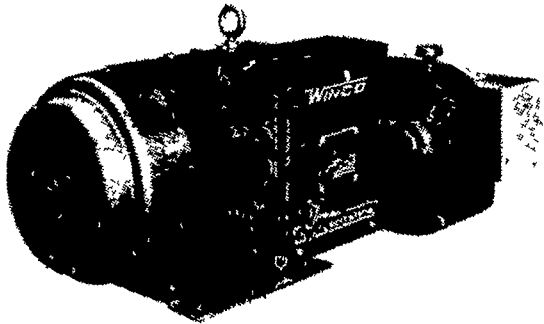
During the Safemark Conference, Leo Waggoner, administrative director of the Iowa Farm Bureau Federation told the group that the real success of the Safemark program is the quality of goods and competitive prices Safemark offers. He also said the Safemark program can encourage a person to join or rejoin the organization. "We must be able to give the member something the non-member cannot receive," Waggoner said.

Also included in the afternoon conference was an annual report by Jim Wickizer, general manager of the American Farm Bureau Service Company and recognition of the states' sales efforts during the 1978 year.

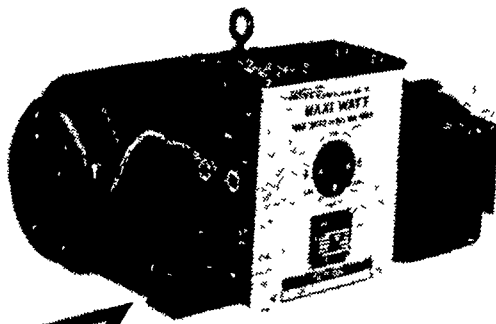


INTRODUCTION SALE, 1979 MODELS OVER 50 IN STOCK

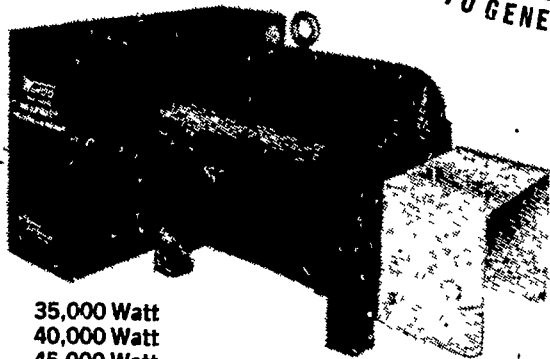
WINCO



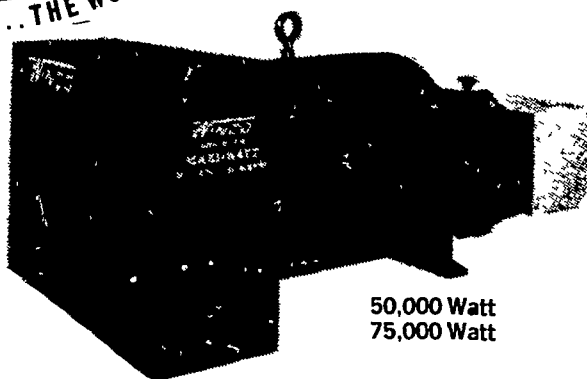
15,000 Watt



25,000 Watt

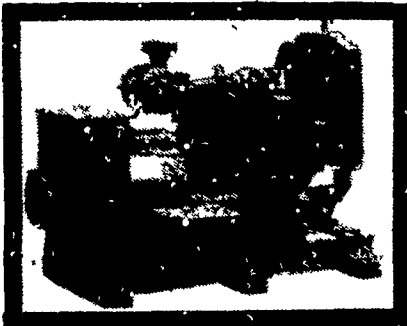


35,000 Watt
40,000 Watt
45,000 Watt



50,000 Watt
75,000 Watt

Over 40 Automatics In Stock 15-500 KW
Over 100 Portables In Stock 1.5-12.5 KW



MAXI



POWER

USED PTO UNITS

1 Winpower 12/20 KW
1 Winco 20 KW
1 Onan 15 KW

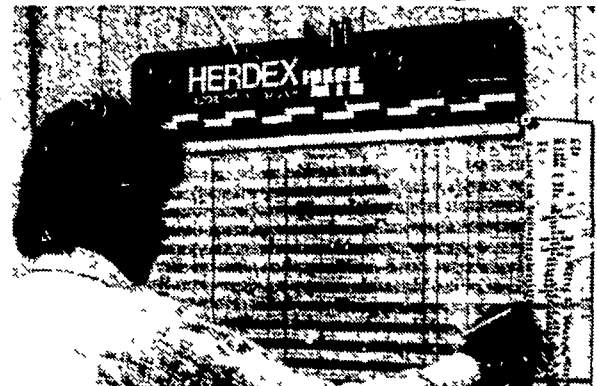
1 Katolight 15 KW
1 Surge 15 KW w/trailer
& Shaft

LEONARD MARTIN CO.

330 FONDERWHITE RD., LEBANON, PA 17042

717-274-1483

NEW MANAGEMENT AIDS FOR YOUR SOWS



This Herdex record system's color-coded display reveals every sow's breeding and production status — simplifies record-keeping chores.

SOW PREG-TEST

- Accurate, fast, simple, one button, one hand operation

- Light and tone denotes pregnancy



- Solid-state circuitry, long life rechargeable battery

- Rugged, anodized, cast aluminum case

- Guaranteed quality, 2 year warranty

- Modern technology at low cost

SEE ON DISPLAY AT THE
PA. PORK PRODUCERS SHOW

RAYTEC MANUFACTURING

R.D. 3, EPHRATA, PA.
PHONE: (717) 354-7139