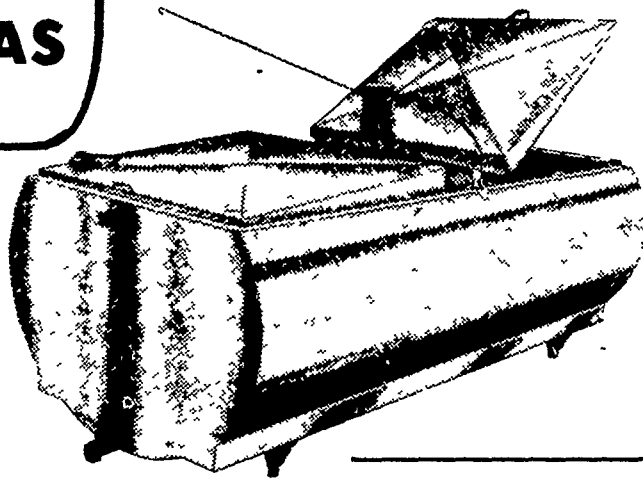


## Chester County DHIA

(Continued from Page 123)

Lloyd Mast & Sons							John S. Smoker							#50	3	3-3	305	18,908	3.9	741
#57	3	4-4	299	21,721	4.1	896	#8	3	4-0	305	19,860	4.2	825	#64	3	3-5	305	19,662	3.7	735
#4	3	8-1	299	19,513	4.1	798	#12	3	3-11	293	18,648	4.1	756	Harold J. Ranck						
#37	3	5-3	305	22,764	3.4	779	Harvey C. Waltz							Posey	3	9-0	305	16,510	4.5	741
#21	3	3-5	285	17,649	4.1	717	#103	3	4-9	295	20,526	3.9	807	Aaron Burkholder	3	6-9	305	18,421	4.0	737
Paul King							#113	3	5-8	305	19,281	4.1	800	#57	3	5-3	305	19,393	3.7	727
Tara	3	8-3	305	19,562	4.5	888	David Walton							#23	3	3-6	305	19,294	3.8	727
Robert E. Pepple							Susan	3	6-5	305	19,303	4.2	807	#26	3	3-6	305			
#30	3	3-10	305	23,028	3.8	882	Meg	3	5-1	305	19,375	4.1	787	Ronald F. Elliott	3	6-11	305	15,688	4.7	735
#56	3	3-5	305	17,840	4.7	842	Della	3	9-6	305	22,606	3.3	744	Hazel						
#60	3	3-1	246	13,614	5-7	775	J. Harold Bare							Milton & Joyce Edwards	3	5-0	305	15,364	4.8	735
#4	3	4-1	305	19,005	3.9	732	#54	3	7-0	305	23,121	3.5	800	#8						
#53	3	3-0	303	17,722	4.0	706	Lester Eby							Mast Stoltzfus						
#57	3	3-0	290	20,316	3.5	704	Marnie	3	9-0	305	21,482	3.7	794	Theresa	3	9-3	286	18,703	3.9	732
Harold Umble							Herman Stoltzfus							Fyann	3	4-1	300	16,977	4.3	732
Midnite	3	11-0	305	21,875	3.9	856	Gretel	3	3-7	305	21,403	3.7	794	Lizzie	3	6-0	305	18,271	3.9	711
David Windle							Anabel	3	8-6	305	19,020	3.7	705	David Bartram						
Verna	3	5-1	305	22,715	3.8	853	William E. Parry & Son							#63	3	0-0	305	16,218	4.5	730
Elain Petersheim							#564	3	5-5	305	21,185	3.7	793	Richard Proud & Son	3	6-3	305	21,095	3.5	728
Rose	3	3-2	298	21,499	3.9	848	#507	3	4-3	300	19,580	3.6	705	#147	3	6-3	305			
Alice	3	3-3	305	18,745	3.9	733	#148	3	6-10	305	22,543	3.1	701	E. Richard Hoopes	3	7-3	305	18,605	3.9	726
Josie	3	3-4	305	19,354	3.7	709	Jonas E. Stoltzfus							#81	3	7-3	305			
Merle J. King							Heidi	3	7-6	305	19,481	4.1	792	S.R. & M. J. Matthews	3	5-10	290	16,020	4.5	718
Gleem	3	5-3	305	22,348	3.8	841	Landis S. Reid	3	6-7	305	20,693	3.8	785	Timothy Kauffman						
Gail	3	8-4	305	22,539	3.4	775	John M. Umble							Skylark	3	8-2	305	18,953	3.8	717
Celia	3	6-7	297	19,429	3.7	728	Sid	3	4-2	305	19,752	4.0	781	Samuel B. Acker						
H. & R. Mason							Hargret Dairy, Inc.							#284	3	8-2	305	18,308	3.9	714
#112	3	4-7	305	21,989	3.8	839	#62	3	6-7	305	18,484	4.2	779	Delphi Farms	3	4-9	305	19,406	3.7	712
Wilkinson Farm #2							Richard Hostetter							#29	3	4-9	305			
#622	3	5-2	305	21,435	3.3	835	#65	3	5-8	305	20,859	3.7	776	George Steele & Sons						
Donald Hostetter, Jr.							Walmore #3							#21	3	5-10	301	19,500	3.6	710
Betty	3	5-2	305	19,827	4.2	827	#305	3	5-5	305	19,923	3.9	770	Kulp Bros.						
Fairy	3	4-1	305	17,795	4.1	722	Kimberton Farm School, Inc.							Norma	3	9-9	302	18,967	3.7	710
Katie	3	8-6	305	17,504	4.1	718	Eleanor	2	5-3	305	14,987	5.1	770	Willowland Farm						
Walmore							Paul M. Snader							Joyce	3	6-1	305	19,585	3.6	708
#802	3	4-11	305	20,837	4.0	826	#27	3	7-3	290	20,253	3.8	760	David Weaver						
							Kenneth J. Roberts							Cheryl	3	3-3	305	16,602	4.3	708
							#5	3	4-2	305	19,103	3.9	751	H. R. & H. L. Brown						
							Norman G. Laffey #1							#10	3	8-2	305	19,793	3.6	707
							#122	3	7-11	305	18,149	4.1	745	(Turn to Page 126)						

MAKE ME A  
BULK MILK  
COOLER THAT HAS  
EVERYTHING!



### MUELLER Bulk Milk Coolers

THE MUELLER MODELS OH, MHL, AND MW WITH HIPERFORM MAKE ALL OTHER BULK MILK COOLERS OBSOLETE

SEE THE MUELLER NEW MODELS  
★ 500 MW ★ 600 MW

The "MW" is one of the Lowest pouring Height Bulk tanks. Check with us all the new features of the "MW" bulk tank.

If you are in the market for a bulk milk cooler and you don't check all the advantages of the Mueller "OH", "MHL", and "MW" you may be buying an obsolete cooler.

#### USED TANKS

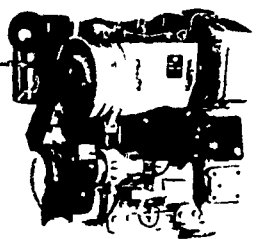
600 gal. M Mueller  
300 gal. Mueller  
375 gal. DeLaval  
500 gal. Milkeeper

350 gal. Esco  
425 gal. Esco  
500 gal. Mojonier  
600 gal. Mojonier

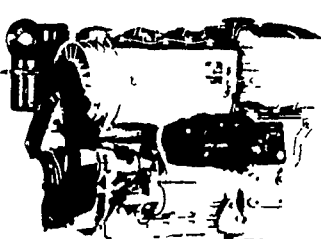
400 gal. Dari-Kool  
D-2 600 gal. Girton  
D-2 400 gal. Girton  
500 gal. Wilson

800 gal. Jamesway  
2-400 gal. Jamesway  
500 gal. Jamesway

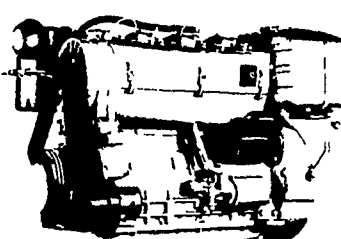
ASK US TO SEE A **MUELLER PRE HEATER** IN OPERATION, RIGHT ON THE FARM.



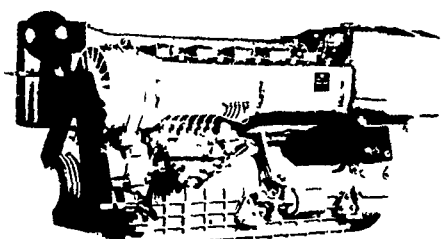
2800 R.P.M.  
44 SAE HP  
40 DIN HP



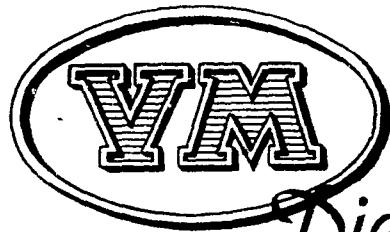
2800 R.P.M.  
66 SAE HP  
60 DIN HP



2800 R.P.M.  
88 SAE HP  
80 DIN HP

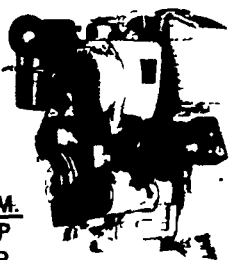


2800 R.P.M.  
132 SAE HP  
120 DIN HP



1050 SU  
SERIES

2800 R.P.M.  
22 SAE HP  
20 DIN HP



FOR MORE  
INFORMATION  
ON HIGHER H.P.  
— CALL US! —

#### USED DIESELS

- 1-Cyl. Deutz
- (4) SR2 Lister
- 1-Barnford
- (4) DVA 1500 Slanzis
- 1 - ST2 Lister

THE "RIGHT FROM THE START" DIESEL ENGINE LINE FOR FAULTLESS PERFORMANCE.

## QUEEN ROAD REFRIGERATION

Box 67, Intercourse, PA 17534  
Phone: John D. Weaver - 717-768-9006 or 768-7111  
or Answering Service - 717-354-4374

24 HOUR  
SERVICE