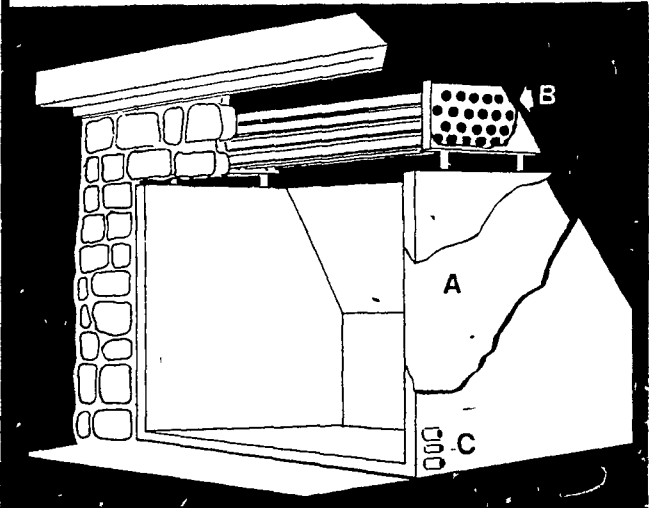




PORK, DELICIOUS AND NUTRITIOUS FOR YOU AND YOUR FAMILY

## Hydro-Heater will cut your fuel costs . . . Can heat your whole house, even when it's zero outside!



Why settle for a conventional fireplace when you can have a beautiful efficient Hydro-Heater?

- A A 1 1/4" water jacket surrounds the fire on back sides and bottom. These water jackets help to absorb heat from the fire.
- B Directional flow tubing captures the heat that is normally lost up the flue. 65% of the heat collected in the Hydro-Heater is absorbed by the tubing section. This heat is then transferred to your existing heating system.
- C These fittings connect the Hydro-Heater to your existing system. The heat collected by the Hydro-Heater is transferred to every room of your house via your normal heating ducts or radiators. A built-in safety system assures that the Hydro-Heater temperature remains below 210°.

FOR FURTHER INFORMATION CALL:

**J. & A. STOVES**  
At Blue Ball Machine Works  
(717) 354-4478 Evenings Call (717) 354-9431  
(215) 445-4191

**LYCO DISTRIBUTING CO.**  
RD #3, Cogan Station, PA  
10 mi. N. of Williamsport on Rt. 15  
(717) 998-2468

## Wine conference held

HERSHEY - Philip M. Wagner, enologist, author and editor was the featured banquet speaker at the Eleventh Pennsylvania Wine Conference, Feb. 6 and 7, 1979, in Hershey. Wagner is one of the 'pioneers' of the 'new' eastern wine industry. His address concerned "Eastern Wine Growing - Problems and Prospects."

Other program topics included two panel discussions on "Vintification of Seyval for Different Styles of Wine" and "The Economical Selection and Use of Equipment in the Small Winery." The first panel concerning Seyval wines was followed by a blind tasting and evaluation and discussion of four types of Seyval wine by members of the audience.

Ms. Lisa van der Water of the Wine Lab, St. Helena, California, talked about two areas of vital importance to the winery including "Practical Methods of Determining Microbiological Spoilage of Wine" and "Services Available to Small Wineries Through a Consulting Laboratory."

A new concept in managing vineyard pests was presented in detail by Dr. G. L. Jubb, Jr., Associate Professor of Entomology at the Erie County Field Research Laboratory of Penn State and Thomas Obourn, Erie County agricultural Extension agent.

Dr. Robert Beelman, Associate Professor of Food Science described how to use freeze-dried malo-lactic bacterial cultures for

initiating malo-lactic fermentation in wine.

There were also nearly 100 exhibitors of agricultural, horticultural and wine equipment at this meeting held in conjunction with the Pennsylvania State Horticultural and Vegetable Associations. Additionally, ladies attending the meetings were invited to attend the program sponsored by the Ladies Auxiliaries of the State Horticultural and Vegetable Associations.

## Sheep and lambs hit record low

HARRISBURG - Inventory of sheep and lambs on Pennsylvania farms on January 1, 1979 at 75,000 head was a record low and down six per cent from a year earlier, according to the Pennsylvania Crop and Livestock Reporting Service. The inventory value was \$3,488,000 compared to last year's value of \$2,920,000.

Pennsylvania's 1978 lamb crop was estimated at 62,000 head, down 21 per cent from 1977. The lambing rate was

103 per 100 ewes one year and older in 1978 compared to 104 per 100 in 1977.

Sheep and lamb numbers in the United States on January 1, 1979 totaled 12.2 million head, down one per cent from the 12.3 million head on farms a year earlier and the smallest inventory since records were begun in 1867.

The inventory value of all sheep and lambs January 1, 1979, jumped 38 per cent from a year ago to \$876 million. The 1978 lamb crop of 8.02 million head was seven per cent below the previous year. The nation's 1978 lambing rate was 94 per 100 ewes compared with 97 per 100 in 1977.



## The Genetic Edge



# Farm With The Edge DEKALB Hybrids

The edge in big corn yields starts with DEKALB hybrids. DEKALB hybrids offer The Genetic Edge. The performance edge Pennsylvania farmers need to produce bin-busting yields year after year. DEKALB's corn research and testing provide you with a complete line-

up of performance-proven hybrids bred to handle stress and disease. And, with your DEKALB Big 3 you get the edge in yield security by planting the best hybrid in each maturity. See your DEKALB dealer today and farm with The Genetic Edge. Go with DEKALB hybrids.

### XL-53

XL-53 High performance corn. Healthy stalks keep it standing. Extra response at high populations. Large ears and fast drydown.

### New XL-61

XL-61 Big-eared single cross. Produces loads of quality grain. Robust plants show excellent disease resistance and standability.

### XL-72b

XL-72b Extra plant health, standability and yield potential add up to great performance. Bred to handle stress and come through big.

A condition of sale, please note statement of limited warranty and remedy on DEKALB orders and tags.



**DEPEND ON DEKALB**

"DEKALB" is a registered brand name. Numbers designate hybrids.

### DUAL FUEL FURNACE OR BOILER, BURNS WOOD AND GAS OR OIL

- Provides heat during power failures.
- Capacity for 5 foot logs.
- Ignites wood automatically.

We Service & Install all types of heating systems.

### LESTER E. WEAVER

Ephrata #4, PA

717-733-8806 or 354-5307

### HIGH PRESSURE WASHING AND DISINFECTING POULTRY HOUSES AND VEAL PENS

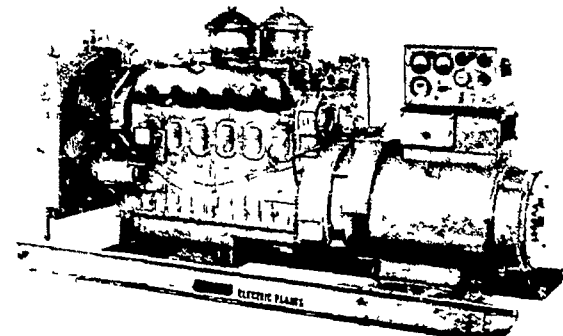
### MAYNARD L. BEITZEL

Witmer, PA 17585

Phone - 717-392-7227

### ELECTRIC GENERATING SYSTEMS

Built to Your Specifications  
Manual or Automatic  
L.P. Gas - Diesel - Gasoline



We Also Carry G.M. & Detroit Engine Parts.  
Sales - Service

### MARTIN ELECTRIC PLANTS

Isaac W. Martin, Owner

Pleasant Valley Rd., RD2  
Ephrata, PA (717) 733-7968