

Livestock market and auction news

Western Maryland Market

Western Maryland Stockyards, Inc.

Westminster, Maryland
January 30, 1979

BUTCHER CATTLE: Good run, mostly cows offered. Fat Steers Strong demand, \$2.00 higher! Top 65.50; Good Choice 60.00-

65.50; Standard 55.00-60.00; Heifers, Top 56.75; Cows Large run, very active 3.50 higher; Good Cows, few 52.50-55.00; Standard & Utility 50.00-52.00; Canners 48.00-50.00; Shelly 48.00-Down; Bulls Good demand. Good 58.00-62.00; Medium 54.00-58.00.

BUTCHER HOGS: Medium run, \$1.00 lower! No

top hogs offered; Few 200-225 lbs. 51.00-52.00; 230-260 lbs. 50.00-51.50; 170-190 lbs. 48.00-50.50; 265 to 290 lbs. 48.50 to 51.00; Sows to 47.25.

VEAL CALVES: Good run, prices steady; light CFS \$3.00 higher! Big CFS steady. Good-Low Choice 100.00-117.00; Standard 85.00-100.00; Light calves 70.00-85.00; Weak & Rough 70.00-Down. Farm Bulls to 119.00, Heifers to 116.00.

LAMBS: Few offered. Medium to 45.00.

STOCK CATTLE: Good run, very active prices slightly higher. Stock Steers 50.00-84.00, heavy feeders 55.00-65.00; Stock Heifers 45.00-74.50; Stock Bulls 50.00-76.00.

PIGS AND SHOATS: Large run, prices steady. By the head 15.00-45.00, SHOATS to 51.00; By the lb. 60 to 80 lbs. to 82.50; 100 to 140 lbs. to 55.00.

66.50; few Good 63.00-65.35, few Standard 59.00-62.75; few Good & Choice sl. heifers 62.10-64.60. Utility & Commercial sl. cows 49.00-54.50, few 56.00. Cutters 51.50-54.50; Canner & L. Cutter 46.00-51.50, Shells down to 40.00. 1 Choice sl. bullocks at 63.00. Yield Grade #1, 1150-1800 lbs. 58.75-66.75.

CALVES 410. Vealers uneven, about steady; few Prime vealers 139.00-141.50, Choice 110.00-138.50; Good 95.00-114.00; few Standard & Good 110-130 lbs. 92.00-95.00, 90-110 lbs. 87.00-90.50, 70-85 lbs. 78.00-88.00, Utility 50-100 lbs. 55.00-75.00.

FARM - CALVES: Hol. Bulls 90-120 lbs. 93.00-124.00, few Hol. Heifers 90-104 lbs. 105.00-125.00.

HOGS 94. Barrows and gilts \$1.00 lower. US No. 1-2 210-230 lbs. barrows & gilts 53.85-54.10, No. 1-3 215-245 lbs. 53.00-53.50, few No. 2-3 260-280 lbs. 47.75-50.50. SOWS few US No. 1-3 400-500 lbs. sows 45.50-48.00, few No. 2-3 400-600 lbs. 42.50-47.00.

FEEDER PIGS 63. US No. 1-3 40-50 lbs. feeder pigs 45.00-51.00 per head, Utility 75 at 58.00 per head.

SHEEP 11. Spring-or-Wooled sl. lambs 1 Choice, 50 lbs. at 70.00, few Good 50-80 lbs. 50.00-59.00; few Slaughter ewes 27.50-30.00.

Pa. Auction Summary

Of 16 Livestock Auction Market Reports.
February 2, 1979

CATTLE 5389. Compared to 3911 last week and 8551 a year ago. Compared with last week's markets, slaughter steers uneven, Choice & Prime 75 cents to 1.00 higher, Standard & Good uneven. Sl. heifers 1.00-2.00 higher. Sl. cows steady to 1.50 higher. Sl. bullocks weak to 1.00 lower. Sl. bulls 1.00 higher. High Choice & Price sl. steers 65.00-68.00. Choice 63.00-67.50. Good 58.00-64.00. Standard 52.00-62.00. Choice sl. heifers 60.00-65.00, Good 55.00-62.00, few Standard 50.00-58.00, few Utility 49.00-56.00. Utility & Commercial sl. cows 49.50-55.00, Cutters 47.00-52.00, Canner & L. Cutter 44.00-50.00, Shells down to 38.00, few Choice sl. bullocks 62.00-66.00, few Good 57.00-65.00, few Standard 55.00-60.00. Yield Grade #1, 1100-2000 lbs. 59.00-67.00, Yield Grade #2, 800-1500 lbs. 56.00-61.00.

FEEDER CATTLE: Good & Choice 300-700 lbs. steers 65.00-80.00. Few Good & Choice 300-600 lbs. heifers 54.00-70.00.

CALVES 3382. Compared to 3152 last week and 4794 a year ago. Vealers heavy Choice & Prime steady to weak, Choice & below steady to 5.00 higher. Prime vealers 105.00-130.00, Choice 97.00-

125.00, Good 90.00-110.00. Standard & Good 90-110 lbs. 80.00-90.00, 70-90 lbs. 70.00-85.00, Utility 50-100 lbs. 50.00-75.00. **FARM CALVES:** Active. Hol. Bulls 90-120 lbs. 90.00-125.00. Hol. Heifers 90-130 lbs. 90.00-140.00.

HOGS 7479. Compared to 6196 last week and 8272 a year ago. Barrows and tilts 1.00 lower. US No. 1-2 200-240 lbs. barrows & gilts 53.50-55.75, No. 1-3 200-260 lbs. 52.50-54.50, No. 2-3 190-270 lbs. 51.00-53.50. SOWS 1.00 lower. US No. 1-3 300-600 lbs. sows 44.00-49.00, No. 2-3 400-650 lbs. 38.00-45.00. **BOARS 32.00-42.00.**

FEEDER PIGS 1596. Uneven, mostly 656, steady to strong 1576. US No. 1-3 20-35 lbs. feeder pigs 20.00-37.00 per head, No. 1-3 35-50 lbs. 32.00-51.00, few No. 1-3 50-65 lbs. 47.00-67.50 per head.

GRADED FEEDER IGS 2087. ALL SALES CWT. Compared with 3569 head last week, and 2624 head a year ago. Feeder pigs unevenly steady to \$10.00 higher. US No. 1-2 25-40 lbs. 116.00-134.00, 40-50 lbs. 102.00-138.00, 50-60 lbs. 97.00-120.00, 60-95 lbs. 67.00-96.00; US No. 2-3 25-40 lbs. 110.00-131.00, 40-50 lbs. 98.00-115.00, 50-70 lbs. 63.00-97.00.

SHEEP 394. Compared to 308 last week and 388 a year ago. Woolled sl. lambs steady to strong. Choice 60-110 lbs. 70.00-81.50, few Good 50-90 lbs. 65.00-75.00.

Martin LIMESTONE

Apply lime on frozen ground

Lime can be applied almost anytime, however winter months are ideal, because the ground is firm and the freezing and thawing action helps to disseminate the lime in the soil

MARTIN LIMESTONE, INC.
Blue Ball Pa 354 4125
Gap Pa 442 4148

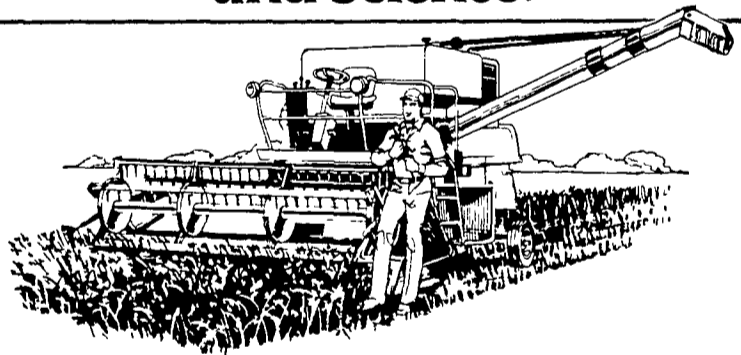
Chambersburg Auction

Chambersburg, Pa.
February 1, 1979

CATTLE 292. Compared with last Thursday's market, Sl. cows uneven, utility & commercial 1.50 lower, canner & cutter 1.50 higher; few Choice YG 65.00-

AGRIPRO SOYBEANS

The difference between luck and science.



AGRIPRO 10

A great new early group one variety, Agripro Ten can give you a head start over other varieties, with excellent emergence and standability, and race one phytophthora resistance.

AGRIPRO 20

A group two pureline variety that's topped university tests across the bean belt, Agripro Twenty is resistant to race one and tolerant to race three phytophthora.

AGRIPRO 25

An early group three variety, Agripro Twenty-five has demonstrated exceptional yield potential across the entire bean belt. It can withstand phytophthora stress, and has excellent standability.

AGRIPRO 40

Our newest full-season group four variety, Agripro Forty has delivered outstanding yields, with phytophthora resistance, excellent emergence, good seedling vigor and good standability.



First in the science of yields.

Distributed by

P. L. ROHRER & BRO., INC.

SMOKETOWN, PA

PH: 717-299-2571

Dealers Wanted in Pennsylvania & Northern Maryland

SERVING THE FARMERS FOR 105 YEARS

FDIC

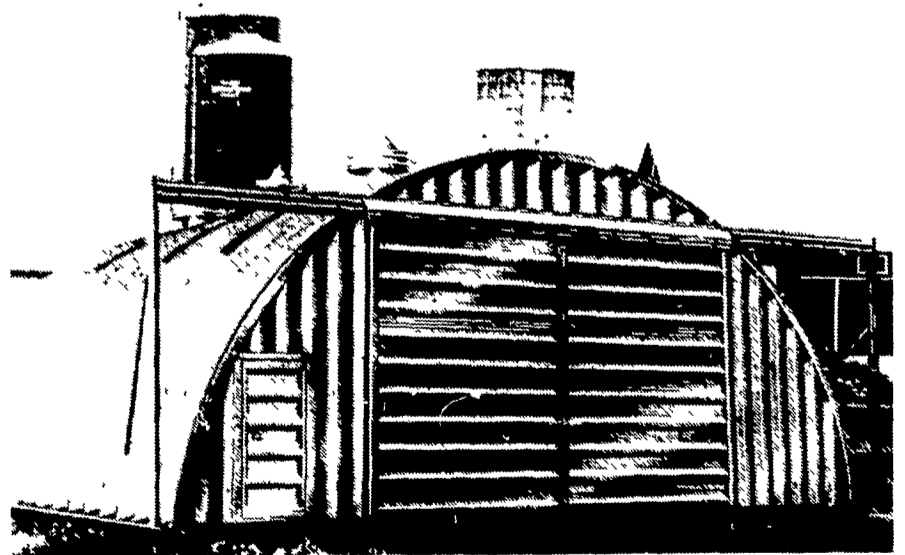
HAMBURG SAVINGS and TRUST COMPANY

Hamburg, PA — Phone 215-562-3811
A FULL SERVICE BANK

Preparing Jerky
Homemade jerky is relatively easy to prepare. Slice flank steak, lengthwise with the grain, into very thin strips and spread onto racks before drying in the oven. Use a low oven temperature and cook until the jerky feels hard and is dry to the touch. Jerky can be easily stored in plastic bags or in jars with tight-fitting covers.

MID-ATLANTIC STEEL BUILDINGS

FACTORY TO YOU COMPANY
FOR FARM - COMMERCIAL - INDUSTRIAL USE



Now that the severe Winter weather is keeping us all inside, it's a good time to sit down and discuss your building needs. Why not call or write Mid-Atlantic Steel Buildings and have your area factory representative discuss your building problems. Find out why thousands of farmers across the United States are ordering their buildings now for spring delivery. Call Us.

MIRACLE SPAN STEEL BUILDINGS

RD1, BOX 5, CHRISTIANA, PA 17509
(Lancaster County)

PHONE: 215-593-5326

