

Livestock market and auction news

Western Maryland Market

January 23, 1979

BUTCHER CATTLE: Light run due to the weather. Fat steers strong demand! Top 64.75; good-choice 58.00-64.75; standard 50.00-57.00; heifers good to 59.50; cows 50 cents to \$1.00 lower. Good cows, 49.00-51.50; standard & utility 46.00-48.00; canners 44.50-46.50; shelly 44.50-down; bulls few offered good to \$59.25.

BUTCHER HOGS: \$1.00 higher! Top hogs 53.35; bulk 200-225 lbs. 52.75-53.35; 230-260 lbs. 52.00-52.75; 170-190 lbs. 50.00-52.00; sows to \$45.25.

VEAL CALVES: Good run very active! Tops, to 120.00 one formula fed calf 275 lb.-\$139.00; good-choice 100.00-120.00; standard 85.00-100.00; light calves 65.00-85.00; weak & rough 65.00-down. Farm heifers to \$105.00 bulls to 123.00.

LAMBS: Few offered good & choice to \$72.00.

STOCK CATTLE: Light

run active bidding. Stock steers 55.00-82.75; stock heifers 50.00-75.00; stock bulls 50.00-65.00.

PIGS AND SHOATS: Light run. By the head 15.00-40.00 shoats to 50.50. By the lb. to 54.00.

Chambersburg Auction

Chambersburg, Pa.
January 25, 1979

CATTLE 214. Compared with last Thursday's market, slaughter steers grading good 25 cents to \$1.25 higher; sl. cows 1.50-3.50 higher; couple choice 65.60, 66.10; good 59.75-64.25 few standard 58.00-62.25; 1 choice sl. heifers at 68.00 few good 58.75-63.00; utility & commercial sl. cows 49.50-56.00 few cutters 50.00-55.00. Canner and l. cutter 46.50-50.50 shells down to 42.25. Yield grade #1, 1100-1800 lbs. 57.35-65.00, 1 at 67.25

CALVES 440. Vealers grading good & choice 5.00-12.00 higher, standard & good 3.00-5.00 higher. Few

prime vealers 137.00-139.00, Choice 115.00-135.00 good 90.00-117.00; few standard & good 110-130 lbs. 90.00-95.00, 90-110 lbs. 86.00-90.00, 70-85 lbs. 77.00-88.00, few utility 50-100 lbs. 50.00-75.00.

FARM CALVES: Hol. bulls 90-120 lbs. 95.00-118.00, few 126.00 Hol. heifers 90-120 lbs. 88.00-98.00.

HOGS 100. Barrows and gilts about steady. US No. 1-2 210-240 lbs. barrows & gilts 54.60-55.10, No. 1-3 230-240 lbs. 54.00-54.50. US No. 1-3 300-600 lbs. sows 46.00-49.25. 1 Boar at 38.00.

FEEDER PIGS 30. Few lots US No. 1-3 30-40 lbs. feeder pigs 35.00-39.00 per head.

SHEEP 7. Woolled sl. lambs few choice 60-) lbs. 69.00-73.50.

Pa. Auction Summary

Pa. Auction Summary of
14 Livestock Auction
Market Reports
January 26, 1979
CATTLE 3911. Extreme

weather conditions thru the week reduced some sales considerably. Compared to 5841 last week and 6500 a year ago. Compared with last week's market, slaughter steers 50-1.00 higher. Sl. heifers, sl. cows, and sl. bulls unevenly steady. Sl. bullocks 2.00-3.00 higher. High Choice & Prime YG 3-4 sl. steers 63.75-67.00. Choice YG 2-4 62.00-66.75, Good 59.50-63.00, Standard 57.00-60.50, few Utility 53.00-58.00. Choice sl. heifers 58.00-63.50, Good 55.00-61.00, Standard 48.00-55.00, few Utility 45.00-48.00, Utility & Commercial sl. cows 48.00-54.00, Cutters 47.00-50.50, Canner & L. Cutter 44.00-47.50, Shells down to 42.00. Choice sl. bullocks 63.00-66.75, Good 60.00-63.75. Yield Grade #1 1000-2200 lbs. 58.00-66.00, Yield Grade #2 900-1750 lbs. 55.00-61.00.

FEEDER CATTLE: Good & Choice 300-750 lbs. steers 61.00-85.50. Good & Choice 300-700 lbs. heifers 54.00-68.50.

CALVES 3152. Compared to 2630 last week and 4215 a year ago. Vealers steady to 8.00 higher. Few Prime vealers 100.00-139.00, Choice 95.00-125.00, Good 88.00-110.00, Standard & Good 110-130 lbs. 90.00-100.00, 90-110 lbs. 75.00-90.00, 70-90 lbs. 65.00-85.00, Utility 50-110 lbs. 50.00-75.00.

FARM CALVES: Active, strong to 5.00 higher. Hol. Bulls 90-120 lbs. 80.00-118.00, few 135.00. Hol. Heifers 80-135 lbs. 85.00-135.00.

HOGS 6196. Compared to 5805 last week and 7585 a year ago. Barrows and gilts steady to 1.50 higher US No. 1-2 200-240 lbs. barrows & gilts 55.00-56.50, few 58.00, No. 1-3 200-250 lbs. 53.50-55.50. No. 2-3 190-265 lbs. 52.00-54.00. No. 1-3 140-190 lbs. 45.00-53.00. SOWS steady to strong. US No. 1-3 300-600 lbs. sows 44.00-50.00, No. 2-3 300-700 lbs. 40.00-45.00. BOARS 32.00-40.00.

FEEDER PIGS 656. Compared to 867-last week and 1383 a year ago 2.00-5.00

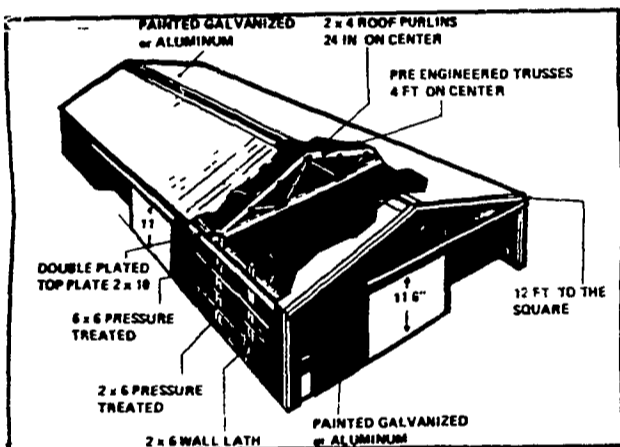
lower. US No. 1-3 20-35 lbs. feeder pigs 16.00-32.00 per head, No. 1-3 35-50 lbs. 31.00-45.00. Utility 20-30 lbs. 13.00-20.00 per head. GRADED FEEDER PIGS 3569. ALL SALES CWT. Compared with 2513 head last week, and 1634 head a year ago. Feeder pigs grading U.S. 1-2 unevenly steady, 2-3 steady to 15.00 lower. US No. 1-2 20-40 lbs. 115.00-137.00, 40-50 lbs. 101.00-128.00, 50-60 lbs. 90.00-110.00, 60-85 lbs. 80.00-100.00, US 2-3 30-40 lbs. 95.00-110.00, 40-50 lbs. 88.00-105.00, 50-90 lbs. 67.00-95.00.

SHEEP 308. Compared to 321 last week and 316 a year ago. Woolled sl. lambs unevenly steady. Choice 60-100 lbs. 69.00-76.00, few 82.00. Good 50-110 lbs. 50.00-69.00. Slaughter ewes 36.00-46.00, few down to 15.50.

Able and Baker

Able and Baker were two female monkeys shot into space in separate containers in the nose cone of a Jupiter rocket fired by the United States in 1959.

BUILDINGS FOR EVERY NEED
Quality Built & Expertly Constructed
Machinery, Confinement, Storage
Compare & Then Call Us
AND SAVE



BILL & STAN INC.

RD1 Brogue, PA (717) 927-6092
Serving York, Lancaster & No. MD

THE

ALASKA

WOOD BURNING STOVE AND FIREPLACE

(A Modern American Version of a Canadian Step Stove)

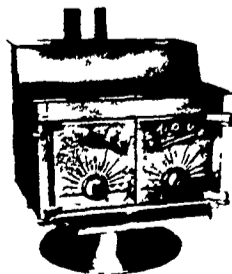
- * Heating One Room Or Entire Home
- * 9 Handsome Models Sand Blasted Finish.
- * Chrome Trimmed
- * Hot Air Unit Available.
- * Lifetime Guarantee.

- * Construction - 1/4" & 5/16" steel boiler plate, firebrick lined-extra cast iron door-greater efficiency, Baffle plate-lower stack temperature.

Cost Less
Built Better

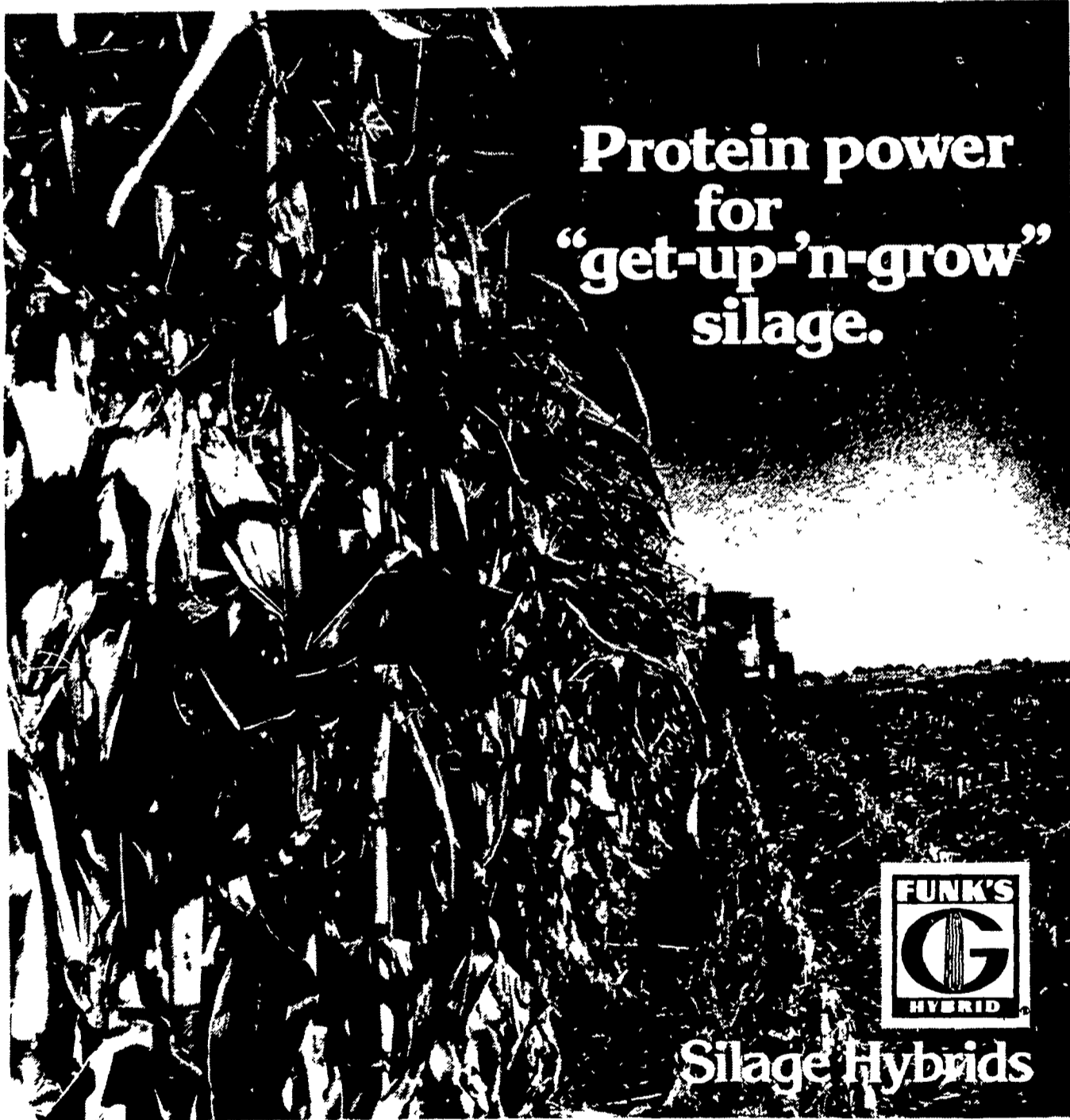
Don't let anyone tell you a baffle system isn't important!

Special Prices on all models in stock to make room for New Models.



STORE HOURS:
Closed Mon. and Tues.
Wed. thru Fri. 10 to 8
Sat. 10 to 4
Other hours by appointment

CHESTER B. WOLT (Dist.)
24 S. Hershey Ave.
Bareville
Leola, Pa. 17540
Phone (717) 656-6898



Silage Hybrids

It takes a special breed of hybrids for high performance corn silage. Not just stalk and leaf tonnage that might look impressive. But with the extra grain production that packs silage with protein power as well as taste appeal. That extra feeding value can be measured in terms of better milk and beef production.

There's a high performance, high energy Funk's-G silage hybrid in every maturity range. Your Hoffman Seed Man can help you select the best ones for your growing conditions.



HOFFMAN SEEDS, INC.

LANDISVILLE, PENNSYLVANIA 17538

Serving Northeast Agriculture Since 1899