



## CUSTOM MADE FEED BINS

- Made of 14 Gauge Steel
- Longer Taper for Easier Flow
- All welded seams which make it water proof and rodent proof
- Can be installed inside or outside building
- Most installations can be made without auger.

**WILL DELIVER AND INSTALL ANYWHERE**

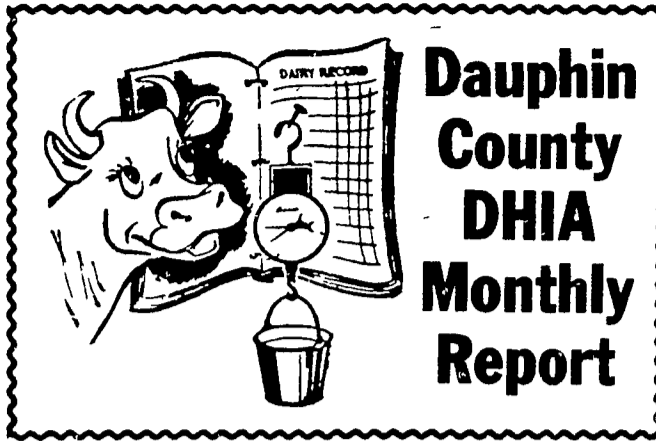
FOR FREE ESTIMATE CALL

### STOLTZFUS WELDING

717-345-4854

We Sell, Service & Install

Bucket Elevators, Grain Augers, M-C Grain Dryers, Distributors, Pipes & Accessories.



## Dauphin County DHIA Monthly Report

DECEMBER 1978

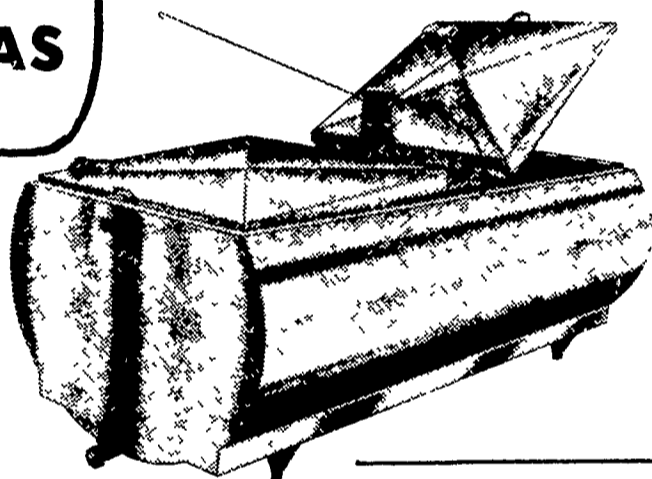
Roxy, an 8-year old Holstein in the Paul Crissinger herd, topped the milk production list in Dauphin County for lactations completed in December. She produced 24,191 pounds of milk and 855 pounds of butterfat. Second high in milk was a cow owned by J. Richard Alwine. Her lactation credits came to 24,015 pounds of milk and 742 pounds of butterfat. In butterfat, it was a close race between Poppy of Catalpa Farms and Duchess, owned by John Hertzler. Poppy, a 5-year old Holstein, won the top honor with a record of 21,705 pounds of milk, a 4.1 per cent test and 893 pounds of butterfat. Duchess, also a 5-year old, Holstein checked in with 19,237 pounds of milk, a 4.6 per cent test and 887 pounds of butterfat.

OWNER BREED	NO COWS	% DAYS IN MILK	LBS MILK	% FAT	LBS. FAT
Restful Acres H	53.4	92.7	58.3	3.7	2.17
Great View Farms H	42.5	90.2	47.8	3.9	1.85
Robert J. Schaffer H	60.7	79.9	46.6	3.9	1.80
John Hertzler H	51.6	95.6	44.8	4.0	1.77

John Hertzler H	50.7	89.3	43.1	4.1	1.75
Roy C. Wilbert H	41.0	85.6	46.0	3.8	1.73
Harold M. Nissley H	41.9	90.1	46.4	3.7	1.72
Elwillo Farms Mix	108.5	93.4	44.2	3.9	1.72
Robert Keiter H	19.2	100.0	47.2	3.6	1.71
Paul L. Crissinger H	69.1	87.0	44.2	3.8	1.68
Landen Farms H	90.9	84.9	41.6	4.0	1.68
Edgar Hoffman Pegmar H	31.0	90.3	45.9	3.6	1.66
Wilber Campbell G	59.3	91.1	36.7	4.5	1.65
John Roy Book H	51.6	90.3	42.0	3.9	1.64
Earl Campbell H	59.1	83.5	40.0	4.1	1.63
Lytle Farms Inc. Mix	89.8	89.1	44.1	3.7	1.61
Earl E. Keefer A	71.6	87.7	37.9	4.2	1.59
J. Richard Alwine H	51.0	84.2	38.7	4.1	1.59
Conewago Farms H	76.2	83.6	39.4	4.0	1.57
Donald Engle H	46.8	86.7	41.3	3.8	1.57
Dale F. Faust H	35.0	86.4	38.4	3.9	1.51
R Own Dairy Inc. H	88.3	92.9	37.4	3.9	1.46
Arthur Brandt H	75.0	88.8	38.9	3.8	1.46
J. Melvin Brandt H	69.0	74.7	37.4	3.9	1.45

(Turn to Page 96)

**MAKE ME A BULK MILK COOLER THAT HAS EVERYTHING!**



## MUELLER Bulk Milk Coolers

THE MUELLER MODELS OH, MHL, AND MW WITH HIPERFORM MAKE ALL OTHER BULK MILK COOLERS OBSOLETE

SEE THE MUELLER NEW MODELS

★ 500 MW ★ 600 MW

The "MW" is one of the Lowest pouring Height Bulk tanks. Check with us all the new features of the "MW" bulk tank.

If you are in the market for a bulk milk cooler and you don't check all the advantages of the Mueller "OH", "MHL", and "MW" you may be buying an obsolete cooler.

### USED TANKS

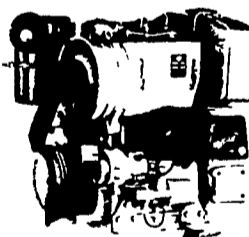
600 gal. M Mueller  
300 gal. Mueller  
375 gal. DeLaval  
500 gal. Milkeeper

350 gal. Esco  
425 gal. Esco  
500 gal. Mojonier  
600 gal. Mojonier

400 gal. Dari-Kool  
D-2 600 gal. Girton  
D-2 400 gal. Girton  
500 gal. Wilson

800 gal. Jamesway  
2-400 gal. Jamesway  
500 gal. Jamesway  
500 gal. OH Muell **SOLD**

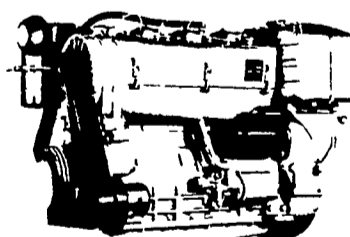
ASK US TO SEE A **MUELLER FREE HEATER** IN OPERATION, RIGHT ON THE FARM.



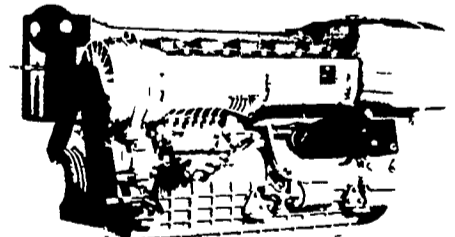
2800 R.P.M.  
44 SAE HP  
40 DIN HP



2800 R.P.M.  
66 SAE HP  
60 DIN HP



2800 R.P.M.  
88 SAE HP  
80 DIN HP



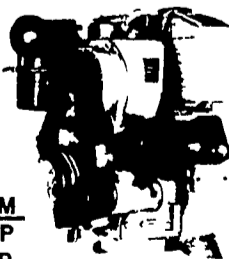
2800 R.P.M.  
132 SAE HP  
120 DIN HP



Diesel

1050 SU SERIES

2800 R.P.M.  
22 SAE HP  
20 DIN HP



**FOR MORE INFORMATION ON HIGHER H.P. - CALL US! -**

### USED DIESELS

- 1-Cyl. Deutz
- (4) SR2 Lister
- 1-Bamford
- (4) DVA 1500 Slanzis
- 1-ST2 Lister

THE "RIGHT FROM THE START" DIESEL ENGINE LINE FOR FAULTLESS PERFORMANCE.

## QUEEN ROAD REFRIGERATION

Box 67, Intercourse, PA 17534  
Phone: John D. Weaver - 717-768-9006 or 768-7111  
or Answering Service - 717-354-4374

**24 HOUR SERVICE**