

# Hand calls for involvement, support of co-op

By **SUSAN KAUFFMAN**  
Staff Writer

**CHESTNUT LEVEL** — Keynote speaker for District 3 of Inter-State Milk Producers, Dr. Paul E. Hand, compared the past performance and future dependence of the cooperative's success to family of complex interests willing to communicate effectively.

"Inter-State has been a great cooperative in the past. It is also, as many have said, a big business. But it is more than that. It's a family interests — a strong family, an active family, a lasting, enduring family," the assistant general-manager stated.

Since its formal organization in 1917 it has, according to Hand's presentation, grown as a family in numbers, in value, and in several other avenues to meet the needs of marketing milk in a changing society and economy.

Tracing briefly the many changes in social, moral and institutional attitudes of modern day America, Hand emphasized that the present task is to understand the existing society. Cooperatives are now under attack, and there has to be a mutual trust within the coop itself among its many branches — members, directors, management and employees.

A strong cooperative, Hand explained, results in part from a great deal of personal involvement by its individual members on the local as well as the larger concerns. "The cooperative will be strong if individual involvement and input is given," he noted.

Pointing out many factors which have made Inter-State an effective milk marketing cooperative in the past as well as the present, Hand reported that the membership now stands at 2980,

having a peak of 3,000 members in 1974. Hand said that there is a waiting list for membership but the concern is keeping the volume stationary, according to market demands. Monthly sales for the co-op tally \$20 million and steps are being taken to maintain a healthy reserve and insure security to the cooperative economy, he added.

The first year of Quality Control, Inc. has been

completed. Holly Milk has operated on a limited daily basis since Fall with all systems operative.

A technical problem with designing a waste disposal system to meet standards set for the early 1980's has yet to be worked out for the plant to operate on fulltime production, however. "In reality, the waste from the plant has to be purer by 1980 than the water found in the trout stream near it," he remarked.

Hand cautioned that the cooperative's future depends upon what the total dairy

situation will be. As milk producing a high quality product become more a necessity, consumption decreases, more advertising and

## Ida's Notebook

Ida Risser



I don't know if you are like me or not, but during the Winter I try to plan my driving for days when the road is clear. There is one thing that can't be arranged for though and that is the school bus which comes regularly at 7:05 no matter what the weather happens to be. So the windshield must be scraped and the one mile journey to the bus stop must be taken.

In my many years of driving, snow and ice have always figured in the few accidents that I've had. Cars just seem to turn around on icy roads when I'm driving. Could it be that I don't slow down enough to allow for the road conditions?

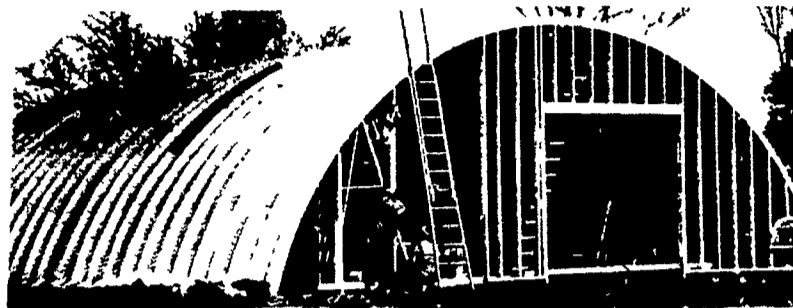
Last month, when my daughter and her husband landed in Rochester, N.Y. from Portland, Oregon, she was disappointed as she hoped for a white Christmas. Well, she got one as there

was 36 inches of snow in New York over the holidays and it was difficult for their family to get together.

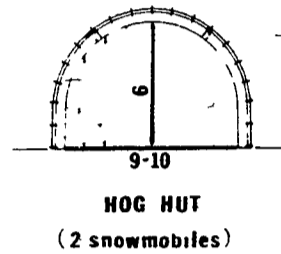
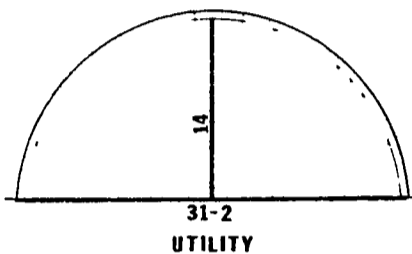
This year we picked a clear, cold day to travel to the Farm Show. We took an Amish lad along and all of us appreciated the shuttle buses as one's feet surely take a beating. A few hours of big machinery, cows and horses is plenty for me. Then I gravitate to the food, vegetable and fruit displays. And I could circle the flower plants many times and forgot how tired my poor feet are as I try to decide what I want to buy to take home. Finally I decide on a yellow primrose, as I've never had one.

So, if it must snow, I do hope it will be during the daytime so that I can at least enjoy the lovely sight from my warm kitchen. I'm always disappointed when it comes during the night.

**ONE TIME ONLY SALE**  
**PERFECT but slightly watermarked ARCHES**  
**WE SUPPLY ARCHES & END CONNECTORS**



-- YOU BUILD YOUR OWN ENDWALLS



**ARCHES for 30x50 — \$2152 FRT \$140**

**ARCHES for 10x10 — \$306 FRT \$40**

**ORDERS by MAIL ONLY — 20% with order**

**BALANCE by sight draft on delivery — FRT. FOB**

**WE can't afford salesmen at these prices**

**PARTY CONSTRUCTION CO., Inc.**

1218 STEUBEN STREET

UTICA, NEW YORK 13501 315-724-5593

## BOBCAT 500 SERIES

- ★ **TIMESAVER**
- ★ **WORK SAVER**
- ★ **MONEY SAVER**

- **FARMING**
- **CONSTRUCTION**
- **LANDSCAPING**
- **FERTILIZER PLANTS**

- **GRAIN HANDLING**
- **RENTAL YARDS**
- **WAREHOUSES**
- **STOCKYARDS**

**GRUMELLI'S FARM SERVICE**  
Quarryville, PA 17566  
Ph: 717-786-7318  
Ray Showalter 717-665-7174

**STÄUFFER DIESEL, INC.**  
312 W. Main St.  
New Holland, PA 17557  
Ph: 717-354-4181

## Stormor's EZEE-DRY

...now at Big Winter Discount Savings!

No matter how you farm, Stormor is for you — and at substantial savings. Select from drying capacities from 2,000 to 12,000 bu per day at 10 pts. In-bin storage capacities go up to a big 16,000 bu.

## Stormor Grain Bins

**Durable and Dependable — and at Big Winter Discounts!**

All the money-saving features found in Stormor Grain Bins can now be yours at a big savings. You get

- Rugged galvanized, heavy-gauge steel sidewalls
- Exclusive roof Vac-U-Vents
- Hill-and-Valley Bolting
- Rock-solid Anchoring
- Capacities to 152,000 bu

It all adds up to the best grain bin for your money!

*The best is now specially priced. Come in today for Stormor's Big Winter Discounts on the quality built Stormor Grain Bins.*

# Loucks

**GRAIN EQUIPMENT, INC.**  
Box 216, RD 12,  
York, PA 17406  
Ph: (717) 755-2868

**Quality Built to Last Longer**