

# Public Sales Register

**TUES FEB 27 - 9 A.M.** Located in Mifflin Co., 1st farm East of Allensville, Pa., along Rt 655 30 Head Holsteins, Horses, Farm Machinery, & Some Household Goods Jesse S Peachey, Star Rt., Allensville, Pa Mark Glick Auctioneer

**TUES FEB 27 - 10 30 A.M.** Public Auction of Farm Equipment Located 10 miles N of Allentown, 1 mile West of Rt 145 & Laury's Station along Rising Sun Rd., Lehigh Co., Pa Sale for Harold & Irene Mantz Conducted by Ralph W Zettlemoyer Auction Co

**TUES FEB 27 - 9 A.M.** Diamond L Stable Inc, Farm Large Dispersal Farm Equipment, Shop Tools, Butcher & Office Equipment Located at farm in Adams Co., 6 miles north of Hanover, Pa on Rt 94 thence turn East 1/4 mile at Forest Drive Rd Owners Diamond L Stables, Inc Farm Auctioneer Clair R Slaybaugh

**WED FEB 28 - Ronald Group** Machinery Dispersal near Marion, Pa Ralph W Horst, Auctioneer

**WED FEB 28 - Public Sale of** Double Stone House & Household Goods by Arthur W Rife Paul Epley, Auctioneer

**WED FEB 28 - 11 30 A.M.** Public Sale of Farm Machinery in the New Providence area Terms by Carl Lapp Everette Kreider, Auctioneer

**WED FEB 28 - Public Sale of** Farm Equipment and Household Goods Located midway between Bowmansville

and Fivepointsville, along Pleasant Valley Rd., approx. 2 miles off Rt 625, Sale by Enos Sauder LeRoy S Horst and Sauder Auctioneers

## MARCH

**THURS MAR 1 - 12 Noon** Monthly Cow Sale at the Melvin Kolb, Inc Sales Barn, 2220 Dairy Road, Lancaster, Pa 17601 Dennis Kolb, Sales Manager, Robert Mullendore, Auctioneer

**THURS MAR 1 - 9 30 A.M.** Located in Mifflin Co., 3 miles North of Milroy, Pa., on the back Mt Road Horses, Cattle, Farm Machinery & Some Household Items Mose S & Rebecca Yoder, R.D., Milroy, Pa Mark Glick Auctioneer

**THURS MAR 1 - 9 30 A.M.** Public Sale of Farm Machinery, Tools, Antiques, Car & Truck Located about 2 1/2 miles East off Exit 3 (Loganville Exit) & about 1/2 mile off Old Rt 111 along Springfield Ln in Springfield, York Co., Pa. (near Springfield Bowling Lanes) Mr & Mrs Milton Leber, Owners Robert L Sechrist, Auctioneer

**THURS MAR 1** Hege Brother, Farm Equipment Dispersal 4 miles South of Mercersburg, Franklin Co., Pa J Robert Meyers, Auctioneer

**FRI MAR 2 9 30 A.M.** Annual Spring Machinery Sale All kinds of Machinery Located at the Belleville Livestock Market, Belleville, Pa Consignments must be in prior to sale day. Belleville Livestock Market Manager Glick & Gibboney Auctioneers

**FRI MAR 2 - Ray Hostetter & Karl Kough** Dispersal of Farm Equipment along Rt 641 3 miles Southwest of Newville, Pa Ralph Horst Auctioneer

**FRI MAR 2 - Public Sale of** Farm Equipment and Household Goods for Homer and Erma Light located between Richland and Stouchsburg, Lebanon County Weik and Buffenmyer, Auctioneers

**FRI MAR 2 - 2 P.M.** Public Real Estate Auction, Valuable Farm, Approximately 92 Acres More or Less Located on the premises 3 miles East of Fawn Grove, Pa Via Rt No 851 turn right on Gross Rd to first farm on right in Fawn Twp, York Co., Pa Estate of Mary W Archer James H Archer, Jr Executor Auctioneers Charles W & David W Shrodes

**SAT MAR 3 - 9 A.M.** 15th Annual All Day Sale at Bart Township Fire Company, Bart, Pa Located 6 miles Southeast of Strasburg along Rt 896 in Georgetown, Pa, Lanc Co

**SAT MAR 3 - Public Auction of** Farm Equipment, Household Goods and Antiques for Moses S and Edna M Garman located at Rt. 501, just North of Schaefferstown, Pa John E and Paul E Martin, Auctioneers

**SAT MAR 3 - Galen Pugh** Dispersal of Farm Machinery Located 3 miles Northwest of Shippensburg at Middle Spr-

ing Ralph W Horst Auctioneer.

**SAT MAR 3 1 P.M.** Pork Producers, Berks-Lehigh Co Sale located Kutztown Fair Grounds, Kutztown, PA Ralph W Zettlemoyer Auct Co., Auctioneer

**SAT MAR 3 - Public Sale Reg** Dairy Heifers, Horses & Farm Machinery Located 1 mile South of Van Wert, 4 miles East of Mifflintown Owner Leroy S Yoder, Jr Long Bros Aucts

**SAT MAR 3 - 11 A.M.** Eastern Shore Showcase Heifer Sale, 50 Registered Holstein Calves & Heifers Hunters Sale Barn, Rising Sun, MD For more information or catalogs write Robert Knutsen, R D 1, Rising Sun, MD 21911, 301-658-6325

**SAT MAR 3 - 12 30 P.M.** Public Sale of Household Goods and Personal Property Located along Panarama Drive, approx 2 miles NW of the Village of Bowmansville, on premises of Stauffer's Fruit Farm in Brecknock Twp., Lancaster Co., PA Sale by Therman K Burkhardt, LeRoy S Horst and Paul W Horst Auctioneers

**SAT MAR. 3 - 10 A.M.** Public Sale of 17 Acre Farmette, Farm Implements, Household Goods

& Some Antiques. Located along Wernersville Rd. just outside Fritztown, Berks Co., Pa Terms by Clarence & Margaret Bennetch. Auctioneer H. H. Leid Auction Service

**MON MAR 5 - Public Auction** of Farm Equipment by Aaron W Hoover located Northwest of Ephrata John E. and Paul E Martin, Auctioneers

**TUES MAR. 6 - Public Sale of** Farm Equipment and Household Goods Located 3 miles North of Leola, turn off Rt 23 on N Maple Avenue, Lancaster Co., PA Terms by Samuel Newswanger Robert E Martin and Son 656-7770 and Frank L Steller 656-8195 Auctioneers

**TUES MAR 6 - 10 A.M.** Public Sale of Farm Equipment Located 2 1/2 miles East of Quarryville, off Rt 372, Sale of John K Beiler Kreider and Diller Auctioneers

**TUES MAR 6 - 9 30 A.M.** The Central Pa Equipment Dealers will offer 60 Tractors, 9 Self Propelled Combines, Haying Equipment, a lot of harrows, Plows, etc Located in Clinton Co., 1/2 mile off I-80 exit 26, on Rt 220 (old Rt 120) Mark Glick & Leon Smith Auctioneers

**WED MAR 7 - Farm Equip-** ment Dispersal & Household Goods Located midway between Merchancsburg, Pa. & Williams Grove Sale for Mrs Paul Lebo Ralph W Horst, Auctioneer.

**THURS MAR 8 - Farm Equip-** ment Dispersal for Roy Lehman Located off Rt 11 midway between Chambersburg & Shippensburg Ralph Horst & Kenneth Upperman, Auctioneers

**THURS. MAR. 8 - 9:30 A.M.** Located in Mifflin Co., 3 miles West of Reedsville, Pa., turn on the Barrville Road, 1 1/2 miles Horses, Cattle, Machinery & Some Household Goods John B & Frona Hostetter, R.D., Belleville, Pa Mark Glick, Auctioneer

**THURS MAR 8 - 10 A.M.** Sale of Large Late Model Farm Machinery & Shop Equipment, High Moisture Corn, Hay & Haylage Located along Rt. 343, Lebanon Co, Pa Terms by Dale Jones Auctioneer Ruben Houser 717-274-1240

**THURS MAR 8 - Public Auc-** tion of Farm Equipment Location North of Lititz at 330 Snavely Mill Rd., Sale By Jay R & Joyce M Foreman. John E & Paul E Martin, Auctioneers

## PUBLIC SALE OF ANTIQUES, HOUSEHOLD GOODS TOOLS, QUILTS, CROCKS JUGS & BOTTLES SATURDAY, JANUARY 27 At 10:00

Sale to be held in the Millersville Firehall along East Charlotte Street, village of Millersville, Pa.

Very fine 5 pc. parlor suite w-rush seat, grained dble. lid wood box, walnut dresser & chest of drawers, pine grained wardrobe w-2 drawers, 2 Vic. cane chairs, meat bench coffee table. Other furniture in: plank bottom, oak, mahg., maple, metal, etc. Hand made quilts, lots of jugs & crocks. Copper, wooden, iron, tin, brass & agate articles. Lots of old jars, bottles & insulators. Pressed, flint, German, ironstone, Nippon, Japan, opalescent, carnival, blue willow, bone china, & other glassware & china. Household Goods. Old hand & garden tools.

Not responsible for accidents day of sale.  
NO OUT OF STATE CHECKS ACCEPTED.  
Food Served.

Sale by  
**MR. & MRS. B. HERBERT WIGGINS**  
Howard Shaub Auctioneer  
and Roy C. Probst

## ON THE FARM MONTHLY BRED GILT SALE

**FRIDAY, JANUARY 26, 1979**

Sale to start promptly at  
1:00 every 4 weeks.

Located 18 mi. South of Lancaster, 6 mi. South of Quarryville, take 272 to Little Britain, turn North, follow Little Britain Rd. to Jackson Rd., turn East, second farm, or take 222 out of Quarryville to Little Britain Rd. to Jackson Rd. Watch for sale arrows.

### 50 HEAD 50

(More or Less)  
2 x 3 way cross bred gilts,  
York & Hampshire & Duroc.

This sale consisting of 25-3 way cross bred gilts (parent stock, Wayne Better Bilt Gilts that came in out of the West) York & Hampshire & Duroc cross. These gilts are sired by purebred duroc, bred to purebred York. Looking for Better Stock? Need replacements & adding on or just starting in? Here is an opportunity to buy Better Bilt Gilts (acclimated) due to farrow from 3 days to 4 weeks after sale date. These gilts have size & quality to suit most any buyer. If you are in need of bred gilts plan to attend this sale. They'll be ready, some will be close.

Owner  
**CHRIST A. BEILER**  
R.D. 2  
Quarryville, Pa.

Same time & place, 25 head (more or less) 2 & 3 way cross. Direct offspring from gilts purchased from Mark Nestleroth well known hog breeder from Manheim & a few from Willow Glen. These gilts are sired by purebred duroc also from Nestleroth stock and bred to purebred Hampshire from Franklin Feeser, Md. Due to farrow from 3 days to 3 or 4 weeks after sale date.

Everything vaccinated for erysipelas, wormed & sprayed for lice. Truckers Available.

Owner  
**JOHN B. STOLTZFUS**  
Abe Diffenbach - Auctioneer  
NEXT SALE DATES - Feb. 23 & Mar. 23

## DALE C. BENNETT ESTATE MILKING HERD DISPERSAL

Located off Rt. 154, 1 mile from Estella, PA, 12 miles from New Albany, 9 miles from Shunks, 4 from Forksville, 20 from Grover, 23 from Canton, 48 from Williamsport. Watch for auction arrows off Rt. 14 at Grover, PA and Forksville, PA.

Due to the accidental death of my husband, I will sell the following on:

**FRIDAY,  
JANUARY 26**

1:00 P.M. Sharp  
Blizzard date - Friday,  
February 2

**58 REGISTERED &  
HI-GRADE HOLSTEINS 58**

27 Registered - 31 Hi - grades

1978 Rolling herd average 12,000M 455F.

Sires Represented: Heatherstone Lucky Type Blazer, Vigo Charmorcross, Mary King, Tidy Berk Transmitter, UNH President King, Don Auger Good Investment, Penn Cord G Ivanhoe Pabst, and other good sires. Herd consists of 54 mature cows and 4 bred heifers, 2 fresh August, 3 in September, 5 in October, 9 in November, 9 in December, 6 real nice first calf heifers fresh in January, 2 cows due in January, 3 due in February. Balance in all stages of lactation. Interstate tested, pregnancy examined, shots for shipping fever, charts day of sale.

Sample selling: A real nice Heatherstone Lucky Type Blazer 3-2, 371D 14,444M 3.8T 541F, fresh October 16, milking 62 lbs. You will like this one.

A nice Special Edition 297D 11,956M 3.9T 470F, fresh December 10 with potential to milk a lot more.

A second calf Heatherstone Lucky Type Blazer, fresh September 23, milking 66 lbs. looks real good.

Turn-A-Lum Misty Shamrock, 6 yrs. 346D 15,443M 528F.

Bonnie 6 yrs. 356D 17,107M 4.2T 731F, fresh Dec. 1, milking 61 lbs.

Debbie 273D 13,176M 3.8T 504F, due January 23.

Sales Managers Note: You will find a few outstanding individuals. Cows have good size. This herd is carrying more flesh than they should, due to almost 100% corn silage diet. We think this herd has the potential to produce 2000-3000 lbs. more per cow if they were on a proper diet.

Don't Miss this opportunity to purchase some good cattle. See you Friday, January 26.

Terms: Cash or good check.

Sale under cover, catalogs, Lunch Available

Owner & Administratrix  
**SANDRA BENNETT**

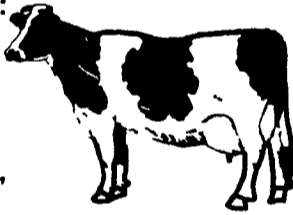
Auctioneer - Arlow Kiehl

Sale Manager

Gordon Wood,

Mansfield, PA 717-549-4901

"For the most in advertising coverage and preparing you sale call Wood's Auction Service"



## PUBLIC SALE

**VALUABLE REAL ESTATE  
MANY FINE ANTIQUES  
& HOUSEHOLD GOODS  
SATURDAY, JANUARY 27**

At 10:00 A.M.

The undersigned will offer the following at Public Sale on the premises located along Route #30 at #6 Lincolnway East in New Oxford, PA; The Real Estate & Personal Property of the former Charles and Bianch Slaybaugh.

### ANTIQUES

Victorian walnut frame, finger carved, sofa with Camel back and one side chair; Victorian walnut frame, rose carved, ladies chair; 2 Windsor 5-spindle single rail chairs, very nice; Cherry 6-leg dropleaf table, 46 inches long with leaves; Softwood 4-leg dropleaf table; Set of 6 setting chairs with 4-slats and rush seats; 4 plank seat chairs; 1 3-slat rush seat chair; Window rocker; Boston rocker, 7-spindle; miniature blanket chest; Cherry 1-drawer nite stand; 2 1-drawer spool stands; blanket chest with till; Walnut 1-drawer dropleaf stand; 2 softwood cottage dressers; needle point stool; empire card table; 5 nice wall mirrors, walnut and mahogany; spool bed; Beehive mantle clock; small china clock; Walnut picture frames; Tree-in-meadow shade table lamp; 3 glass oil lamps; set of 6 large and 6 small tin spice cans; 2 iron floor lamps; farm milk stool; nice early china; pattern glass; Rebecca water pitcher.

Note: This sale contains a real fine line of early antiques in excellent condition.

**MRS. KATHLEEN SMARKOLA**

CLAIR R. SLAYBAUGH, Auct.  
Idaville, PA Phone: 717-677-7479  
Louis T. Guthrie, Attorney