

Dairy cow meat

(Continued from Page 116) cooperative effort to educate the nation's 250,000 dairy farmers, their families and employees, and veterinarians and animal buyers, about ways to prevent antibiotic residues. NMPF initiated the Cull Dairy Cow Antibiotic Task Force, which includes representatives from the National Mastitis Council, the American Dairy Science Association, Animal Health Institute, the American Association of Bovine

Practitioners, the National Dairy Herd Improvement Association, United Dairy Industry Association, USDA, FDA, and State Extension Services. "Dairy producers are concerned with the potential economic efforts of STOP - its impact on cull cow prices," said John B. Adams, staff coordinator for NMPF's Animal Disease Advisory Committee. "We realize that a broad-based coalition is necessary to help dairy producers understand

Vince Arnold

(Continued from Page 114)

for the title of Star Agribusinessman of the North Atlantic Region. He'll be competing against State FFA Star Agribusinessmen from 16 northeastern states. In addition to his work at the garden center, Arnold is also involved with dairy cattle. He owns six Holsteins, and has spent a portion of his time working on a 60-head dairy farm. The young man is also active in the show ring. One of his

accomplishments was showing the reserve grand champion at an FFA dairy cattle show. Arnold's leadership activities in the FFA were also figured in during the selection process. He has served his Chapter as both treasurer and vice president and was also Lebanon County FFA treasurer. He attended the National FFA Convention in Kansas City in 1977 and was a 3-year member of his Chapter's

how to prevent antibiotic residues from exceeding tolerances established for milk and meat."

The Task Force is telling producers about STOP and alerting them to potential residue problems and their responsibilities to use drugs correctly and market residue-free cows. About 2.5 million dairy cows are slaughtered each year.

Dr. John E. Spaulding, director of FSQS's Residue Evaluation and Surveillance Division, said dairy producers should follow carefully the prescribed withdrawal period on a drug's label. Some drugs require as long as 30 days. Dairy producers, Spaulding said, should look at such withdrawal times as "minimums" -- not "maximums" -- and keep their cows on the farm until the withdrawal time has expired.

Currently, FSQS plans to have 182 screening sites covering a total of 333 plants when the program gets underway.

When a violation occurs, FSQS will notify the producer and meat inspectors will carefully observe subsequent animals from that producer as they come to slaughter.

All incidents of illegal residues are reported to the Food and Drug Administration, which has authority to investigate and take regulatory action. If problems persist, tighter restrictions on use of antibiotic drugs could be imposed.

Meanwhile, the possibility of a screening kit for use by farmers on the farm is being explored so that they would know definitely when animals were free from antibiotic residues and ready for market.

dairy cattle and land judging teams.

Arnold looks at his agricultural future as being a good way to express himself and says he derives satisfaction from seeing his work after trees are planted and lawns are seeded. According to Strickler, he has the potential for bringing more recognition to his family and Lebanon County.

Competing against Arnold this year for the State Star Agribusinessman Award were: Earl R Webb of Butler R1, representing the western region; Dan Catherman of 142 Sycamore Drive, State College, representing the northcentral region; and Micah Garling of Mont Alto, representing the south-central region.

Flexsteel featured

LANCASTER — Burkhardt's Furniture, 1590 Manheim Pike, Lancaster, is featuring Flexsteel furniture during the entire month of January in their recently completed custom gallery section. Flexsteel factory representatives will be in the store to assist anyone who may have questions on Flexsteel furniture. Flexsteel furniture is manufactured in several factories across the United States, including one located here in Lancaster. The Lancaster site is spread over 11 acres and employs over 250 people.

Burkhardt's Furniture expanded its store with the Flexsteel custom gallery in mind. This new retailing concept is a first for Flexsteel and is basically a total display of Flexsteel products vignettered and packaged to make customers feel as if they were in their own living rooms.

Lisa Jo Dobrosky, York County's King and Queen, were on television for an interview.

On January 22, the Council will go roller skating at Roller 'R' Way West at Delco Plaza from 7 to 10 p.m.

The next meeting will be on February 7, at the 4-H Center. The program will be conducted by exchange students from Honduras, Japan, and Costa Rica.

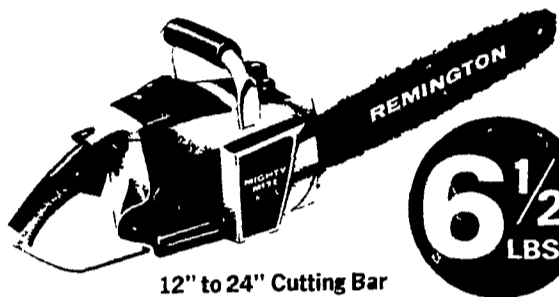
York County 4-H Council meets

BAIR - The January meeting of the York County 4-H Council was held recently at the 4-H Center near Bair.

Slides from the National 4-H Congress held annually in Chicago, Ill., were shown to the group.

The Council held a family movie night at the 4-H Center on January 19. It was reported that Jon Miller and

REMINGTON MIGHTY MITE DELUXE CHAIN SAW



12" to 24" Cutting Bar

6 1/2 LBS*

*less bar and chain

EASY TO HANDLE, FUN TO USE

5 QUESTIONS YOU SHOULD ASK WHEN BUYING A CHAIN SAW

1. Is service available when needed?
2. Are parts in stock for repair?
3. Does quality equal the price?
4. Is it manufactured in U.S.A.?
5. Is the warranty two years?

All 5 questions can be answered YES at **ALLEN H. MATZ, INC.**

505 E. Main St., New Holland
Phone: (717) 354-2214

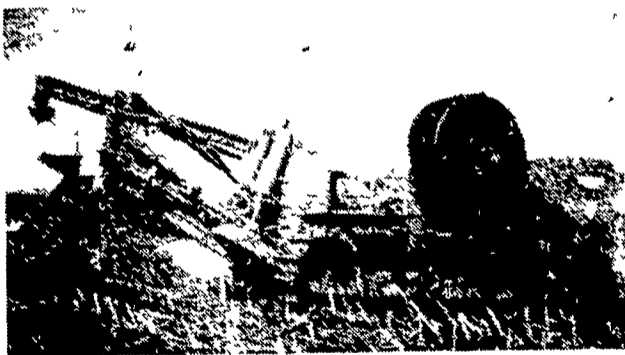
WHY?

SHOULD I CONSIDER A FARM DRAINAGE INVESTMENT FROM COCALICO EQUIPMENT CO. **BECAUSE**

THEY ARE LAND IMPROVEMENT SPECIALISTS USING ALL S.C.S. APPROVED MATERIALS

Call 215-267-3808

ASK ABOUT THEIR LASER BEAM GRADE CONTROL DRAINAGE MACHINE



Drainage Pays High Returns

Investment	Typical Annual Return
Land Drainage	21-46% (d)
Farm Buildings	3-23% (d)
Farm Land	11% (e)
Stocks	7.4% (f)
Bonds	6.1% (g)

COMPARE

Even with the conservative figures shown above, it's obvious that land drainage should top farmers' lists of investment priorities.

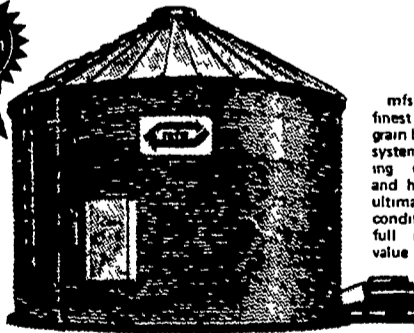
COCALICO EQUIPMENT CO.



DRAINAGE & EXCAVATING
RD #3, DENVER, PA. 17517
(215) 267-3808

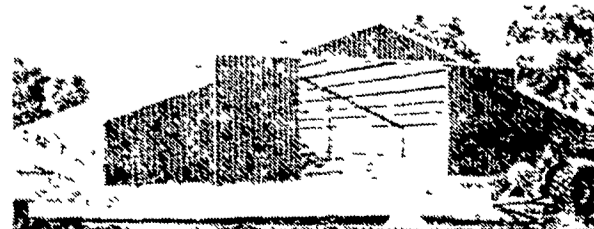


a wise investment in your future



mfs Storage America's finest and most wanted grain bin. A total concept system of high speed drying, conditioning, storage and handling of grain. The ultimate in preserving grain condition and quality for full market and feeding value.

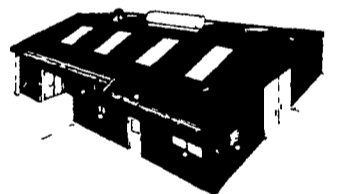
... becomes an even better investment when you can also save money in the process. And, the savings are big when you take advantage of the mfs "Stor-age" Early Order Discounts, now in effect. Order now - take delivery later - be prepared for all your future storage and drying needs. See your nearest mfs dealer for complete information and free systems planning services.



VERNON MYERS, INC.

STEEL BUILDINGS & GRAIN STORAGE

R.D. 4 - Box 845
Lebanon, Pa. 17042
Phone: (717) 867-4139



WE ALSO SPECIALIZE IN BUCKET ELEVATORS, DRYERS, AUGERS

FACTORY AUTHORIZED DISCOUNTS NOW IN EFFECT

INVEST IN GRAIN STORAGE NOW WHILE PRICES ARE AT THEIR LOWEST AND DISCOUNTS AT THEIR HIGHEST.

LARGEST DISCOUNTS EVER OFFERED!!!

1. Early Order Discount
 2. Volume Discount
 3. CASH Discount
- SAVE \$\$\$\$\$\$\$**

COMMERCIAL and AGRICULTURAL BUILDINGS
WE OFFER COMPLETE ERECTION ON ANY SIZE OR STYLE BUILDING

Mail Coupon Today!

- SEND STEEL BUILDINGS LITERATURE
- SEND GRAIN STORAGE LITERATURE

NAME _____
ADDRESS _____
CITY _____ STATE _____ ZIP _____
TELEPHONE _____