

Farmers Union members told of family farm disappearance

HARRISBURG — Time is running out for the American family farm system unless farmers organize, a Michigan farm leader told the Pennsylvania Farmers Union convention here on Monday.

Donna Cootware, president of the Michigan Farmers Union, said Pennsylvania as well as other states are rapidly losing farmers and farm land.

"In 1940, Pennsylvania had nearly 170,000 farms, and the average farm had 86 acres. Today, you have less than half that number — 62,000 and the average size has grown to 154 acres.

"Pennsylvania has lost over half of its farms, and you have lost the families who worked so hard to build those farms," Cootware said.

Cootware, the first woman ever elected state president in the Farmers Union, pointed out that Pennsylvania has lost 6 million acres of farm land since 1940. She said the lost land would support 40,000 farm families.

"The loss of farm families throughout the country has been costly. It means people moved to town to compete with city people for not enough jobs. It means small towns have died. It means

rural churches and schools have closed. It means small businesses have had to close their doors. And it means that fewer and fewer families have the opportunity for the wholesome, productive life that is possible on a family farm," Cootware said.

Cootware said the loss of family farms is moving the nation toward the time when only the very rich can own land. "We are rapidly headed toward a new feudal system where the big businessman or sheik is the prince and the legitimate farmer is the pauper," she said.

According to Cootware, the small farmer is threatened by low farm prices, rising production

costs, high interest rates and competition for farm land by non-farm and foreign investors.

Cootware said the farmer's best hope is to organize and to lobby Congress.

Progress of Green Thumb told

HARRISBURG — Delegates to the annual Pennsylvania Farmers Union Convention heard a report on the progress of Green Thumb, Inc. an employment program for senior citizens.

Making the report was Lewis "Red" Johnson, Little Rock, Ark., executive vice president for Field Operations for Green Thumb, Inc.

Green Thumb, sponsored by the Farmers Union and funded by the federal government, employs 14,000 elderly rural citizens in 45 states, the District of Columbia and Puerto Rico. The program now employs 1,000 people in 55 counties of Pennsylvania. It has operated in the State since 1968.

Johnson is the former president of the Arkansas Farmers Union. He attended the University of Arkansas and has held positions in the U.S. Department of Agriculture.

Johnson addressed a noon luncheon in the Penn Harris Motor Inn, Camp Hill on Monday.

GLICK'S ROOFING & SPOUTING

Handler & Installer Of
BAKED ENAMEL TIN ROOFS
Colors: Turquoise, Red, Olive Green, Rust, Brown, White and Plain.

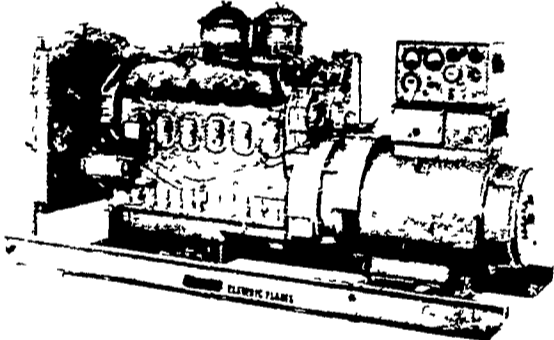
Sizes: 5 ft. up to 36 ft. All in one. Also cut to exact length.

SAMUEL B. GLICK

R.D. 1, Kinzer, Pa. PH: (717) 442-4921
Call in Morning Before 6:30
and Evenings after 6:00 P.M.
No Sunday Calls

ELECTRIC GENERATING SYSTEMS

Built to Your Specifications
Manual or Automatic
L.P. Gas - Diesel - Gasoline

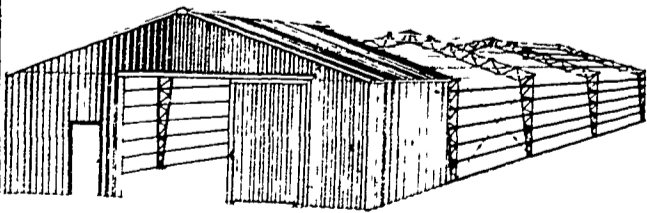


We Also Carry G.M. & Detroit Engine Parts.
Sales - Service

MARTIN ELECTRIC PLANTS

Isaac W. Martin, Owner
Pleasant Valley Rd., RD2
Ephrata, PA (717) 733-7968

This new farm building
costs **40% less!**



- Yes it costs 40% less than conventional steel buildings!
- It comes in a complete package steel columns and trusses wood purlins and girts
- You get unobstructed floor space no poles
- You put it up yourself the average building takes two men only two weeks or less to construct

It'll be worth your while to get the complete story about this AGRICONOMY building

PARTY CONSTRUCTION CO. INC.

1218 Steuben St. • Utica, NY 13501
Phone 315-724-5593

Or Write:
P.O. Box 366L-55
c/o Lancaster Farming
Lititz, PA 17543

There's one sure way to protect young pigs early from both pneumonia and atrophic rhinitis.

See your feed supplier for Tylan® Sulfa in your starter and grower feeds. It's the only feed additive labeled to control both bacterial* pneumonia and atrophic rhinitis. A routine feeding program with Tylan Sulfa protects your pig crop early — from both problems — before you've got an outbreak on your hands. It's the start of a good finish.

*Caused by P. multocida and C. pyogenes

ELANCO

Tylan Sulfa
tylosin sulfamethazine

The start of a good finish



FOR MORE INFORMATION SEE YOUR FEED SUPPLIER SERVICED BY

NEW HOLLAND SUPPLY CO.