

Farm Calendar

(Continued from Page 10)

Topics: income tax law changes and election of officers.

Wednesday, Jan. 17

Lancaster, Lebanon, York Vegetable and Small Fruit meeting, at the Farm and Home Center, Lancaster, 9:30 a.m. to 3:30 p.m.

Adams County Annual Corn Day, McSherrystown Fire Hall, 10 a.m.

Thursday, Jan. 18

Golden Egg Banquet at McGuire Air Force Base, Officers' Club, 7:30 p.m.

Milking school for Blair, Bedford, and Huntingdon County dairymen, today and tomorrow, at the Farm Credit Building, Route 866, Curryville, 10 a.m. to 2 p.m. both days.

Octorara Watershed annual meeting, 7:30 p.m. at Bart-Colerain School. Topics of discussion will include laws guiding

manure management, wise storage of manure, and panel conversations on handling various types of manure.

York County Corn Clinic at the 4-H Center near Bair, 9:30 a.m.

Montgomery County Crops Day, 10:30 a.m. at the 4-H Center near Lansdale.

Annual Adams County Extension banquet, McSherrystown Fire Hall, 7 p.m.

Inter-State Milk Producers district membership meeting, 12 noon at the Quarryville Methodist Church.

Friday, Jan. 19

"Selecting beef steers and heifers," 4-H Beef Council meeting at the Hunterdon County, N.J. Extension Center in Flemington. Open to all interested persons. Program begins at 8 p.m.

Pennsylvania Egg Marketing Association

Virginville Grange meets

VIRGINVILLE - At a recent meeting of the Virginville Grange, John

dinner meeting, Treadway Resort Inn, Lancaster, 7 p.m.

Penn-Winternationals Tractor Pull, today through Sunday, at the Farm Show Building, Harrisburg.

Adams County dairy goat owners hold covered dish dinner at West Street Branch of Gettysburg National Bank, 7 p.m.

Benninger received the four degrees. The Grange draped the charter for Elmer Sonon and balloted for Anna Heinly.

It was reported the fifth degree will be presented here on September 28, and the sixth degree will be presented in Williamsport on October 24. A special sixth degree is to be scheduled in this area, possibly Schuylkill Valley High School. The seventh degree will be presented in Lancaster on November 17.

The Womens Activities

meeting was held on January 9, where they made twine wreaths.

The youth and young marrieds met on January 10 to take down Christmas decorations from the Grange Hall. The group will go on a bus trip March 31, to see a hockey game at Hershey. The tickets are \$8.50 and the contact person is Jane Hill.

The youth presented a check to the Grange to help pay some expenses of a needy family. The County youth play meeting was held on January 8.

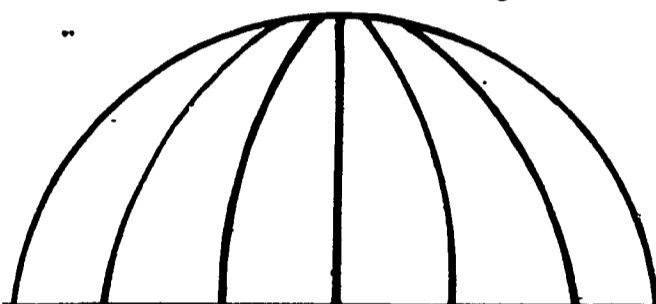
Calendars for 1979 are now available from Jane Treichler. The juniors are

also selling two year calendars for \$2.

WEEU radio station will be handling any cancellations of Grange activities due to bad weather.

A program of the Pennsylvania Dutch was presented to the Grange by Dorothy Miller.

The next meeting will be a Ladies Night. Committee members include Lila Newhard, Mildred Wessner, Pat Schlegel and Grace Henninger. Refreshment committee includes Lester Wessner, Kirk Dreibelbis, Werner Miller and Dennis Wagner.



LANCASTER SILO CO., INC.

2008 Horseshoe Road - 2436 Creek Hill Road
LANCASTER, PA 17601

A COMPLETE INVENTORY OF FEEDING-SYSTEM EQUIPMENT IN STOCK. INSTALLATION AND SERVICE AVAILABLE FOR ALL EQUIPMENT.

"LANCASTER" BELT FEEDERS
"LANCASTER" TAPER BOARD FEEDERS
"LANCASTER" DOUBLE-CHAIN CONVEYORS

SILO UNLOADERS:

STARLINE #70 & #70-R
12 FT. THRU 20 FT.
VAN DALE "MAGNUM"
20 FT. THRU 30 FT.

MIXING & WEIGHING UNITS

Supreme Batch Mixer Units
75 & 95 Cu. Ft. Units
With Scales & 5 H.P. Motor
Automatic Dump Scale Units
3 Sizes Available

FEED PROCESSING EQUIPMENT

Automatic Roller Mills
#200 Mill w/3 H.P. Motor
#400 Mill w/5 H.P. Motor
Automatic Protein Meters

SILO FILLING EQUIPMENT

Supreme 56" Blowers w/P.T.O.
9" Galvanized Fill Pipe
Multi-Flo Silage Spreaders

CATTLE & HOG WATERERS

Ritchie Cattle Waterers
Ritchie Hog Waterers
Starline Water Bowls

DAIRY BARN EQUIPMENT

Cow Stalls & Stanchions
Cow Trainers & Cow Mats
Galvanized Barn Windows
Ventilation Fans
Barn Cleaners

ELECTRIC MOTORS

Baldor & G.E. Motors in Stock
1/2 H.P. Thru 10 H.P.
#6/3 Heavy Electric Cable
50 Amp. Plugs

REBUILT STARLINE SILO UNLOADERS

12' - 14' - 16' Complete with
Reconditioned motors

FOR INFORMATION & QUOTATIONS CALL:

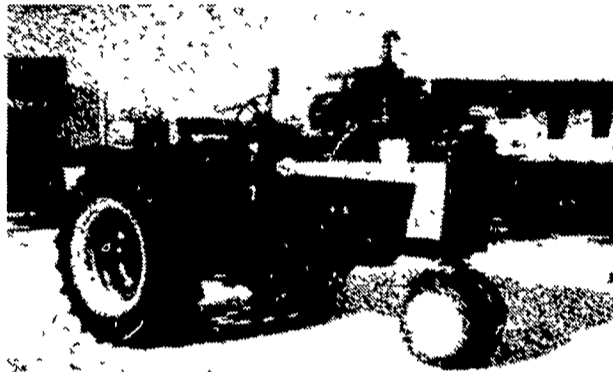
Ken Groff
Sales 299-3722
Home 687-6668
LANCASTER

Larry Hiestand
Office 299-3721
Home 273-7394
LEBANON



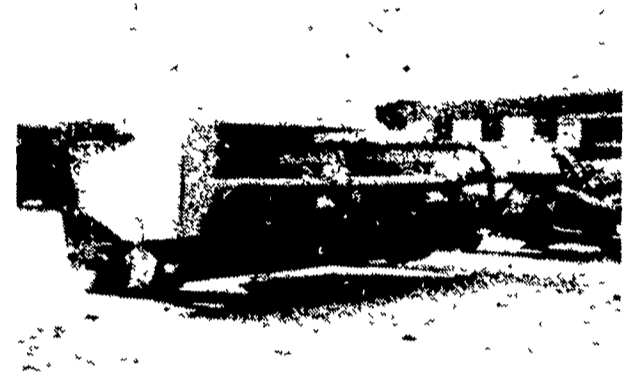
FAIR WEATHER FOR SAVINGS

WITH THESE BARGAINS!



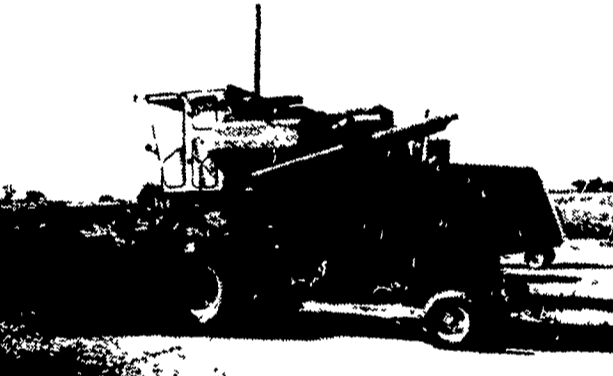
USED TRACTOR

IH 706 Diesel
w/three point hitch \$4,350.



USED HAYBINE

New Holland 479 \$2,750.



USED COMBINE

John Deere 55 Corn Soybean
Special 12' Head \$9,700.



USED TRACTOR

John Deere 1520 Gas w/New
143 Loader \$6,250.

USED BALER SPECIALS

| | |
|---------------------------|----------|
| New Holland 67 Baler | \$775.00 |
| John Deere 14T | 750.00 |
| John Deere 14T w/ejector | 450.00 |
| John Deere 24T | 950.00 |
| John Deere 24T w/thrower | 1,750.00 |
| New Holland 275 w/thrower | 2,350.00 |
| NH 269 w/thrower | 1,750.00 |

USED TRACTORS

MF 175 Diesel \$5,850.00

USED HARVESTER SPECIALS

| | |
|---|------------|
| NH 880 2 Row Narrow Row Head | \$3,650.00 |
| NH 717 Single Row Head, 9 Knife Cutter Bar | 1,795.00 |
| JD #12 w/Single Row Head | 150.00 |

USED TILLAGE SPECIALS

| | |
|--|------------|
| John Deere 4-16" Hyd Reset Three Point | \$1,850.00 |
| Ford 4-18" Semi-Mount Spring Reset | 2,450.00 |
| MF 720 Disk Harrow, 28 Blade, 26" Blades w/hyd cylinder | 3,950.00 |

MISCELLANEOUS

| | |
|---|------------|
| New Set 18 4x30 Snap on Duals w/New Goodyear 6 Ply Tires | \$1,050.00 |
| 3 pt Hitch for 630 tractor | 400.00 |
| Used Cab for 2630 tractor | 950.00 |

USED COMBINE SPECIALS

| | |
|--|----------|
| AC C w/4 Row Corn Head 14' Platform | 6,750.00 |
| Cockshutt 427 w/Power Steering & 10' Platform | 1,450.00 |
| MF 410 Diesel w/cab, 13' platform, 3 row N R corn head | 3,250.00 |
| AC Model E w/10' platform, pickup reel, 2 row corn head, real clean | 5,750.00 |

USED GRAIN DRILLS

| | |
|---|----------|
| John Deere 17 x 7 | \$750.00 |
| Co-op 15x7 Fert Grain Drill w/grass seed attach | 750.00 |
| MF 21x7 Plain | 1,650.00 |

USED PLANTER SPECIALS

| | |
|--|------------|
| Tag 11650 John Deere 1250 - 6 Row Plateless | \$2,350.00 |
| 11941 John Deere 494A - 4 Row | 650.00 |
| 11934 John Deere 494A - 4 Row | 950.00 |

SAVE BIG MONEY ON JOHN DEERE OIL

Available now
at low truckload
prices



Special On Engine Oil Filters

| | Regular | Sale Price |
|----------------|---------|------------|
| T19044 Filter | 3.45 | 3.20 |
| AR43634 Filter | 7.90 | 7.40 |
| AR28110 Filter | 6.95 | 6.50 |

Sale price on oil and filters good thru January 26, 1979



Evergreen Tractor Co. Inc.
30 EVERGREEN RD., LEBANON, PA 17042, PHONE (717) 272-4641