



FABRAL CORPORATION METAL ROOFING & SIDING

LENGTHS	DOUBLE-RIB ALUMINUM HI-STRENGTH ALLOY WIDTH 48" NET	GALVANIZED STEEL 29 GAUGE WIDTH 32" NET	1/4"-29 GAUGE CORRUGATED GALVANIZED WIDTH 24" NET
7'	—	5.60	4.21
8'	9.30	6.40	4.81
9'	—	7.20	5.41
10'	11.65	7.97	6.01
11'	—	8.80	6.61
12'	13.95	9.60	7.21
14'	16.29	11.30	—
16'	18.59	—	—
18'	20.95	—	—
20'	23.25	—	—
22'	25.59	—	—

A COMPLETE LINE OF MATCHING ACCESSORIES

1 PIECE RIDGE CAP	52 1/2"	4.24	—	10'	4.75
2 PIECE RIDGE CAP	52 1/2"	5.35	52 1/2" set	4.49	—
10' RIDGE ROLL	—	7.19	—	5.89	—
END WALL FLASHING	52 1/2"	3.59	52 1/2"	3.45	28" 1.65
12' FIBERGLASS GREEN	49 3/8"	16.49	33 1/2"	11.19	—

Annular-Thread METAL ROOFING NAILS WITH FLAT NEOPRENE WASHER

	ALUMINUM 500 PACK	GALVANIZED	
		5 lbs	50 lbs
1 1/4"	5.39	—	—
1 3/4"	5.89	5.49	48.75
2"	6.39	5.39	47.99
2 1/2"	4.99	5.19	45.69

BARN DOOR HARDWARE

*51-16 Galvanized RAIL...6,8,10,12 per ft	\$ 1.25
*52 Galvanized HANGER . . . pair	12.65
*F51 Galvanized BRACKET	1.09
*G51 Galvanized BRACKET	1.65
*H51 Galvanized BRACKET	3.99
*59A Galvanized RAIL.....per ft	2.29
*53 Galvanized HANGER . . . pair	15.49
*H551 Galvanized BRACKET	5.49
#18 STRAY ROLLER	1.95
#2110-8 GATE HOOK	3.35
#17 DOOR BUMPER Alum	1.19 Galv..... 1.98

SHEATHING GRADE 4'x8' PLYWOOD

5/16"	3/8"	1/2"	5/8"	3/4"
7.89	7.99	9.19	12.49	15.15

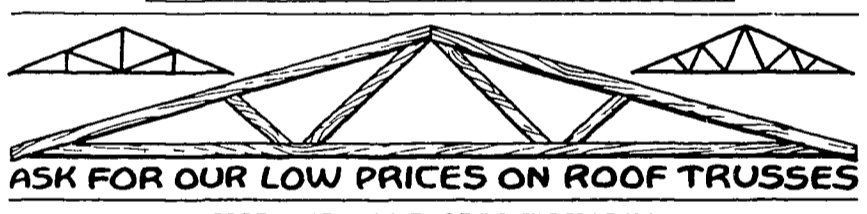
SQUARE BARN POLES CCA Treated

	10'	12'	14'	16'	20'
4"x4"	5 ³³	6 ⁵⁶	7 ⁴⁶	9 ⁶⁰	—
4"x6"	—	9 ⁴⁸	11 ⁰⁶	14 ⁸⁸	17 ⁴⁰
6"x6"	—	14 ⁴⁰	17 ⁸⁵	20 ⁸⁸	30 ⁶⁰

CENTER MATCH BOARDS 2"x6"x12' MBM CCA \$430.00

FARM GATE and FENCE BOARDS

	CCA PENTA
1 1/8" x 6" R.L.	32 1/2 Lin Ft.



ASK FOR OUR LOW PRICES ON ROOF TRUSSES
MADE TO YOUR SPECIFICATIONS
FIR OR YELLOW PINE



Clotex ASPHALT ROOFING

Standard, extra heavy, self-sealing shingles...the sun fuses shingles together.

BUNDLE	SQUARE
6.32	18.96

Mineralized ROLLED ROOFING 36" wide 90 lbs per 108 sq ft Roll. 9.29

ATTIC INSULATION \$3.99
US Fiber. 30 lb. Bag covers 42 3/4 sq ft 3" thick...

ZONOLITE VERMICULITE ATTIC INSULATION
3 cu. ft. Bag \$3.35

OPEN 7:30 TO 5:30 — 6 DAYS A WEEK . . . DELIVERY AVAILABLE



2275 OLD PHILADELPHIA PIKE LANCASTER, PA. 17602
3 Miles East on Rt. 340
717-397-4829 or 397-4820

RT. 230 ELIZABETHTOWN, PA.
1 Mile East of Elizabethtown
717-367-1886 or 653-8310

