

## Water conservation policy meeting slated

HARRISBURG - The Susquehanna River Basin Commission will meet on January 11, beginning at 1:00 p.m., at the Penn Harris Motor Inn, By-pass Routes 11 & 15, Camp Hill.

A proposed Water Conservation Policy and Implementing Standards and a proposed Freedom of In-

formation Policy are among the items on the agenda. At the meeting, the Commission is expected to decide whether to adopt these proposed items after considering the comments received from the public since all were proposed on September 15, 1978. If adopted, the proposed

Water Conservation Policy will require that all new water users and suppliers maximize their water use efficiency by using available, feasible water conservation technology. The Commission will be promoting compliance with the Policy by existing users within a reasonable time.

The Implementing Standards will be incorporated into the SRBC "Regulations and Procedures for Review of Projects" and will establish water conservation requirements for new water uses by public water supply utilities, industrial water users, and agricultural irrigation.

Lancaster Farming, Saturday, January 6, 1979-41

The SRBC Freedom of Information Policy will formalize the Commission's existing policy of making its records available to the public consistent with the Susquehanna River Basin Compact and the policies of its signatory parties.

Other meeting topics will include discussion of the ongoing Conowingo relicensing and review process, demand

forecast requirements for basin utilities, and changing the SRBC review procedures for state groundwater discharge permits. The Commission is also expected to hear a report on the recently commenced Special Susquehanna Groundwater Study and to approve project applications processed since the last Commission meeting.

# GEHL

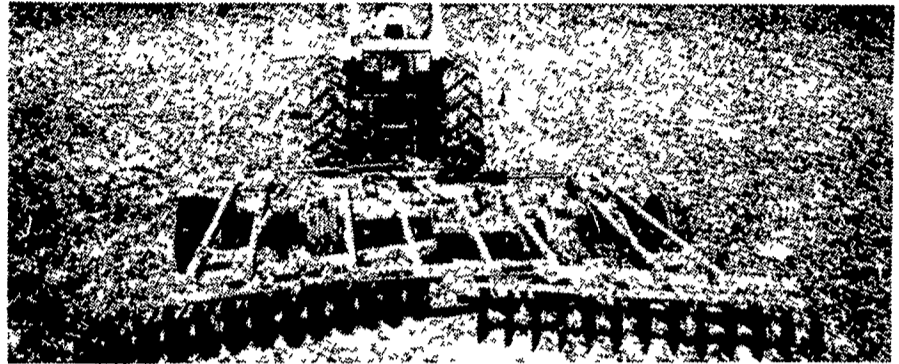
## MIXER-FEEDER BOXES



**MODELS 280 & 170 IN STOCK**

★ Visit The Gehl Booth At  
The PA. FARM SHOW.

## AMCO - THE DISK HARROW YOU NEED



**WE DISCOVERED THAT AMCO HAS ALL THE FEATURES YOU ARE LOOKING FOR ... PLUS ... SPECIAL EARLY ORDER DISCOUNT IF YOU ORDER NOW DURING OUR TRUCKLOAD SALE.**

### MODEL F-15 FEATURES:

- Double offset tandem means overlapping front gangs, no ridging.
- Rock Flex spring hangers.
- Narrow transport width and height.

### FOR THE SMALL OR LARGE FARM OPERATION.

- ★ Available in sizes from 9 ft. 3" cutting width to 39 ft. wing with protected shield bearings.

### Special Bearing Protection for AMCO Disk Harrows

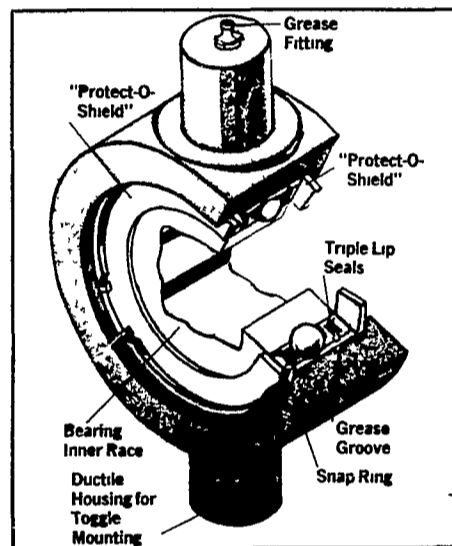
Rely on AMCO's Protect-O-Shield bearings to help eliminate disk harrow bearing failure

#### • ELIMINATE BLOWN SEALS

Too much grease gun pressure can easily blow out the seals in the finest bearings. Protect-O-Shield prevents this, holding the seals in place.

#### • NO MORE WRAP DAMAGE

Rice straw, wheat stubble, baling wire and mud will tear up bearings when wrapped around the harrow axle. Protect-O-Shield prevents this



SEE AT THE HAMILTON EQUIP. BOOTH AT THE PA. FARM SHOW.

**NEW**



**5-SHANK**

**SOIL-MASTER®**

SEE THIS EQUIPMENT  
AT THE PA. FARM SHOW  
AT THE HAMILTON  
FARM EQUIPMENT BOOTH.

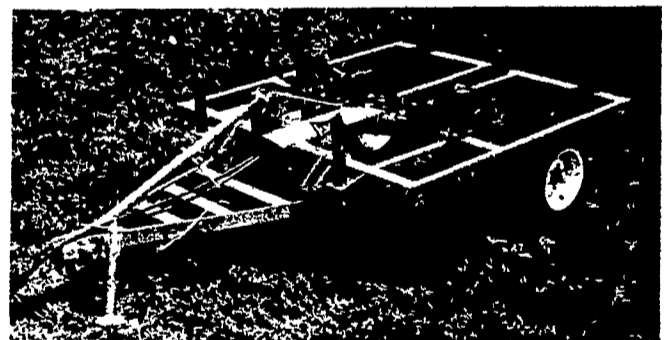
The Following Will  
Be For Sale At  
Binkley & Hurst Bros.  
After The Farm Show:

- 1 - Glencoe 7-Shank Soil Saver
- 1 - 5-Shank Landoll Soilmaster
- 1 - 5-Shank Landoll 2 Bar Chisel Plow

## Built Especially for your 70-95 H.P. Tractors

Check these Landoll Exclusive Features:

- Width of cut 6'3" (75") - 5 shanks
- Convertible to Mounted (Cat. II)
- 1 - 11 coulter gang with three bearing hangers (for maximum absorption of shock loads)
- PLUS all the features of the Soil-Master® line, 7 through 13 shanks



### SPECIFICATIONS

Model	Width of Cut	Shank Spacing	No of Helical Blades	No. of 20" Slicer Blades	Slicer Blade Spacing	Approximate Weight	
						Rigid Shank	Spring Shank
275-5	6'3"	15	5	11	7½"	2935	3170
<b>FRAME</b>			<b>SHANKS</b>			<b>WHEELS &amp; AXLES</b>	
4" sq. tube specially weighted 93½" Frame Depth. Tongue Jack, "Convertible Hitch" with easy leveling adjustment ASAE Safety Reflectors included.			All are on 15" centers, 1¼" x 2" high clearance. Rigid with shear bolt protection, or Heavy-Duty Spring Models.			Hydraulic Axle Lift with (2) 8" Stroke Cylinders (includes stroke control for precise depth setting) Heavy 6 bolt hubs and floatation rims	

*Remember: Quality is always a bargain!*

**NOTICE:** YOUR SKID LOADER SPECIALIST HAS NEW & USED CASE & GEHL SKID LOADERS IN STOCK — CALL US NOW!



**BINKLEY & HURST BROS.**

133 ROTHSVILLE STATION ROAD  
717-626-4705



LITITZ, PA 17543