

Keystone Degree

(Continued from Page 164)



Jeffery Wilson

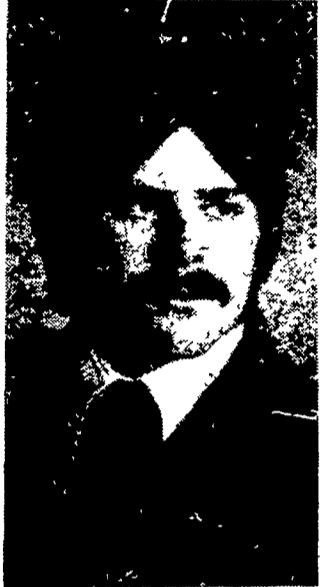
Jeff plans to continue his partnership with his brother, by going in diversified livestock production after graduation.

TRACY HORSLEY
Kennard-Dale

Tracy Horsley, 17, son of Mr. and Mrs. George R. McGinnity, Sr. of New Freedom, is a senior at Kennard-Dale High School. While in the FFA he has served as president and vice-

president of both the Junior Chapter and Senior Chapter. He was also a County FFA reporter.

Tracy's farming program consists of beef steers and also an occupational experience program of working at the Mountain Panel Co., his father's business. Tracy was a member of the parliamentary procedure team three years which went to the state contest two years and won a silver and bronze



Tracy Horsley

medal. He also participated in many county contests and won a silver medal in the state livestock judging contest. He attended three state conventions and went to the national convention in Kansas City, Missouri this year.

Tracy plans to work in his father's business after graduation.

NORTHERN YORK

Jeffrey Donahue, Dillsburg; Jeffrey Kerr, Wellsville; Janet Miller, Dillsburg; and Karen Yost, Dover; are all members of the Gifford Pinchot FFA Chapter and will receive their Keystone Degree next week.

Chester County

DALE DAVIS
Oxford Area

Dale Davis is the 17 year old son of Mr. and Mrs. Charles F. Davis, Oxford R2. He is a senior at Oxford Area High School and has been a member of the Oxford FFA all of his high school years.

In his freshman year, Dale had a project in which he had five Holstein and Angus

cattle. In his sophomore year, he did improvement projects on an area home as well as maintaining his project of the Holstein and Angus cattle.

Dale was also on the dairy products judging team his



Dale Davis

sophomore and junior years and competed at Penn State during the Summer FFA convention. He has been on the work experience program in his junior and senior years. In this program, he does contract labor, consisting of filling, spawning, casing, and

Lancaster Farming, Saturday, January 6, 1979—165

cleaning out for different mushroom growers in the area.

Dale has also served on a number of committees through his FFA years.

After graduation, Dale plans to work in mushrooms doing contract labor until he is ready to begin growing mushrooms himself.



RENEE MCCARDELL
Oxford Area

Renee McCardell, 17, is the daughter of Mr. and Mrs. Clay McCardell, Oxford R1. Renee is a senior at Oxford Area High School. She has been a member of the Oxford Chapter of Future Farmers

of America for four years. She became active in the v-o-ag. program by getting involved with almost all of the chapter activities including the chapter picnic, banquet, leadership conferences, Parliamentary Procedure team, and FFA activities week held at Penn State University where she received a fourth in the interview contest.

Renee has held several offices in the FFA. In tenth grade she was assistant secretary, in eleventh grade, secretary, and in twelfth grade, president. In November, Renee attended the 51st National Convention held at Kansas City, Missouri.

Her leadership knowledge and duties do not stop with the FFA. Renee is involved in many more school activities.

Renee works with Arabian Horses and hopes to someday own and operate a farm. She also plans to stay active in her community.

DAVID J. WYLIE
Oxford Area

David J. Wylie, 19, is the son of Mr. & Mrs. Samuel J. Wylie Jr., Octoraro Farms, Leesbridge. He is a senior at

(Turn to Page 166)

The PROVEN Fickes MASTER-MATIC SILO SYSTEM

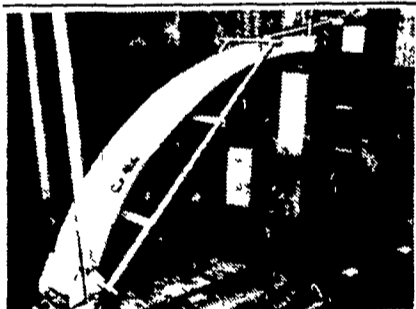
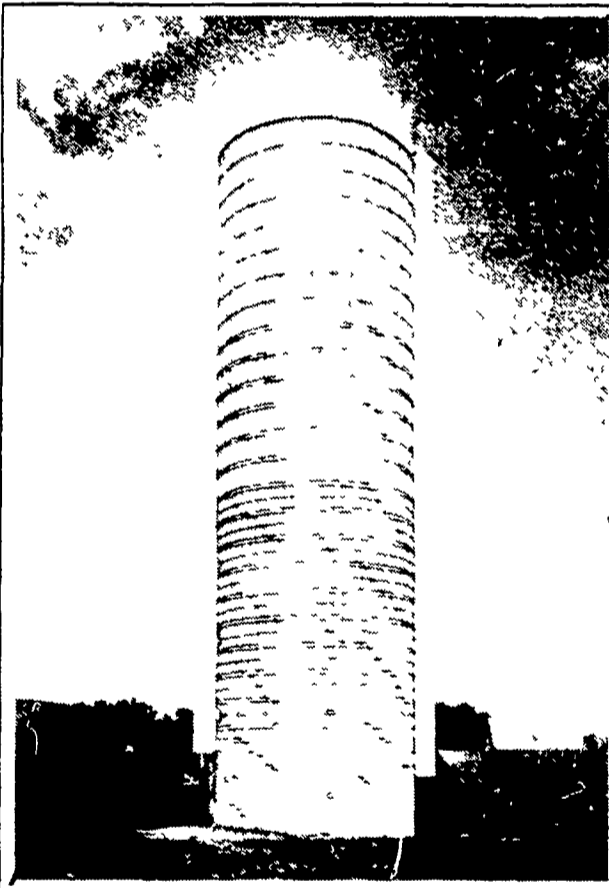
Master-Matic is the proven automatic silage handling system first introduced in the eastern United States by Fickes over a year ago. There's no longer any need to enter the silo. Once filled, the silo can be unloaded from top to bottom—automatically. The Silo-Matic Continuous-door Unloader moves down the continuous doors to unload haylage, corn silage or high moisture corn. It operates effectively, efficiently and without mechanical problems.

The Fickes-Master-Matic Silo System offers you CONVENIENCE—Puts an end to the chore of climbing the silo every few days

TIME-SAVING—Keeps you out of the silo so you can spend your time to more profitable advantage

CLEAN ENTRY CHUTE—Continuous door chute used for unloading. Second chute doors remain in place always clean

SIL-O-MATIC CONTINUOUS-DOOR SILO UNLOADER
This exclusive unloader design has been in use on continuous door silos for more than a year. It has been thoroughly tested and proved under farm operating conditions with haying corn silage and high moisture corn. The Silo-Matic Continuous Door Silo Unloader automatically moves down the silo from door to door. The gooseneck stays in perfect alignment with the chute doors and hood remains in ideal position for maximum silage unloading efficiency. There are no springs, ropes, cables or pulleys to adjust since the downward movement of the unloader operates by gravity. The electric cable is plugged into a power source at the top of the silo. The electric cable automatically uncoils as the unloader moves down the silo.



Silo-Matic TRAVELING BELT FEEDER

FAST, HIGH VOLUME CATTLE FEEDING WITHOUT SEPARATION

- Smooth, Slip-Proof, Fixed Speed Drive
- Even Distribution—No Feed Build-Up
- Belt Glides on Plywood Trays
- Self-Tightening, Self-Cleaning Feed Belt
- Low Horsepower Requirements
- No Separation of Mixed Feeds
- Optional Automatic Reversing Switch For Continuous Feeding



Clean Chute—This photograph shows the clean chute side of the Fickes silo. This system provides clean entry to the silo at all times. Doors are refrigerator type Fickes Swingback hinged doors.

Unloading Chute—The continuous door column chute shown here with continuous door covers in closed position for loading silo.

CONTINUOUS DOORS—The Fickes Continuous Doors can be placed at almost any location desired in the circumference of the silo. They require no special rods or spreaders. The small doors (8' wide x 15' long) are wedged tightly against a 4" steel jamb. The silo is loaded with doors in place.

Take time to see the Fickes Master-Matic Silo System on your trip to the Pennsylvania Farm Show - Booth E807-E808-E809-E810. If for some reason you cannot attend the Farm Show this year, please fill out and mail the coupon below. Fickes will mail complete information to you.

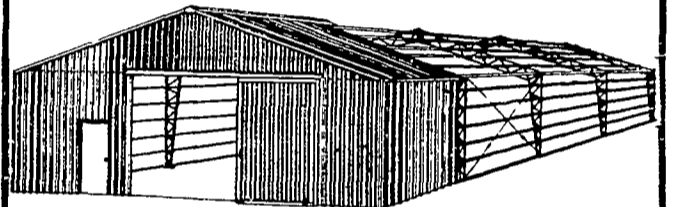


PH: 717-776-3129

Please send me complete information and details on the New Fickes MASTER-MATIC SILO SYSTEM.

NAME _____
ADDRESS _____
CITY _____ STATE _____ ZIP _____
TELEPHONE (AREA CODE) _____
 FARMER STUDENT

This new farm building costs 40% less!



- Yes, it costs 40% less than conventional steel buildings!
- It comes in a complete package.. steel columns and trusses, wood purlins and girts.
- You get unobstructed floor space.. no poles.
- You put it up yourself .the average building takes two men only two weeks or less to construct.

It'll be worth your while to get the complete story about this AGRICONOMY building

PARTY CONSTRUCTION CO. INC.
1218 Steuben St. • Utica, NY 13501
Phone 315-724-5593

Or Write:
P.O. Box 366L-55
c/o Lancaster Farming
Lititz, PA 17543

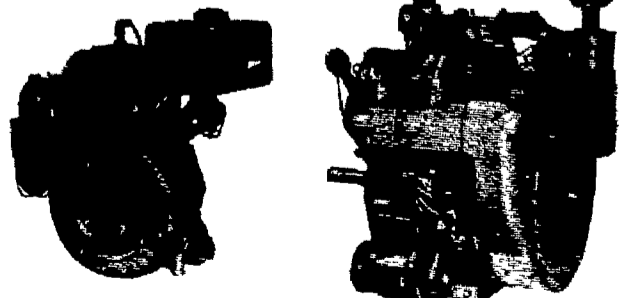


AUTHORIZED DEALER
WISCONSIN ENGINES
4.6 H.P. TO 65 H.P.

NOW IS THE TIME OF YEAR TO HAVE YOUR ENGINE REPAIRED BY ENGINE SPECIALISTS

WE GUARANTEE OUR WORK

WE MAKE SERVICE CALLS



Complete Sales & Service
WES STAUFFER SMALL ENGINES

R.D.3, Ephrata, PA 717-733-9174 or 733-0809
1/4 Mi. S. of Rt. 322 on Pleasant Valley Rd.
Ephrata Exit, New Rt. 222