

Livestock market and auction news

Leesport Auction

Leesport, Pa.
December 13, 1978

CATTLE 256. Supply included 82 feeder cattle. Compared with last Wednesday's market, slaughter cows steady to \$1.25 higher. Few Low Choice slaughter steers 57.00-59.50, Good 53.75-56.50, Standard 49.00-51.35, few Utility 46.75-49.25. Few Choice slaughter heifers

50.50-54.10, few Good 50.00-53.25, few Standard 47.75-49.50. Utility & Commercial slaughter cows 40.75-45.60, couple to 45.85, Cutters 41.25-43.50, Canner & Low Cutter 37.50-40.75, Shells down to 34.00. Few Good slaughter bullocks 56.25-57.50. Few Yield Grade #1 1200-1550 lbs. slaughter bulls 53.85-54.70. Choice 450-800 lbs. feeder steers 56.50-70.00; Good & Choice 350-675 lbs. feeder heifers 45.00-55.00; few Choice 450-900 lbs. feeder bulls 55.00-66.50.

CALVES 171. Vealers grading Standard & Low Good \$1 to \$4 higher. Choice vealers 84.50-92.00, Good 76.00-91.00, Standard & Good 90-110 lbs. 65.00-69.00, 70-85 lbs. 58.00-65.00, Utility 50-100 lbs. 50.00-58.00. Farm calves, holstein bulls 85-120 lbs. 68.00-88.00; holstein heifers 90-120 lbs. 70.00-130.00.

HOGS 271. Barrows & gilts 25 cents to \$1.25 higher. US No. 1-2 195-245 barrows & gilts 52.35-52.85, No. 1-3 185-255 lbs. 51.75-52.60, No. 2-3

250-275 lbs. 47.75-50.00, one lot 330 lbs. at 44.00. US No. 1-3 275-550 lbs. sows 40.25-43.75, few No. 2-3 300-600 lbs. 32.25-38.50. Boars 35.00-42.00.

FEEDER PIGS 238. ALL PRICES CWT. US No. 1-3 (1 Lot) 14 lbs. feeder pigs 132.00, No. 1-3 20-40 lbs. 112.00-125.00, No. 1-3 45-55 lbs. 99.00-114.00, No. 1-3 75-95 lbs. 57.00-75.00 cwt.

SHEEP 25. Choice 70-105 lbs. wooled slaughter lambs 63.00-79.00. Few Slaughter ewes 20.00-25.00.

Belleville Auction

Belleville, Pa.
December 13, 1978

CATTLE 157. Steers steady. Cows higher.

STEERS: Standard 48.75-52.75.

COWS: Utility & Commercial 43.50-47.00; Cutter 42.50-44.25; Canner & Low Cutter 38.00-42.00.

BULLS: Yield Grade No. 1 49.60-55.85.

CALVES 181. Vealers higher. Standard & Good 110-

130 lbs. 82.00-87.50; 90-110 lbs. 62.50-76.00; 65-90 lbs. 55.00-62.00; Holstein bulls 95-115 lbs. 86.00-91.00. Heifer Calves 98.00-128.00.

HOGS 266. Barrows & gilts steady. US No. 1-2 50.50-52.25; US No. 1-3 48.50-50.25.

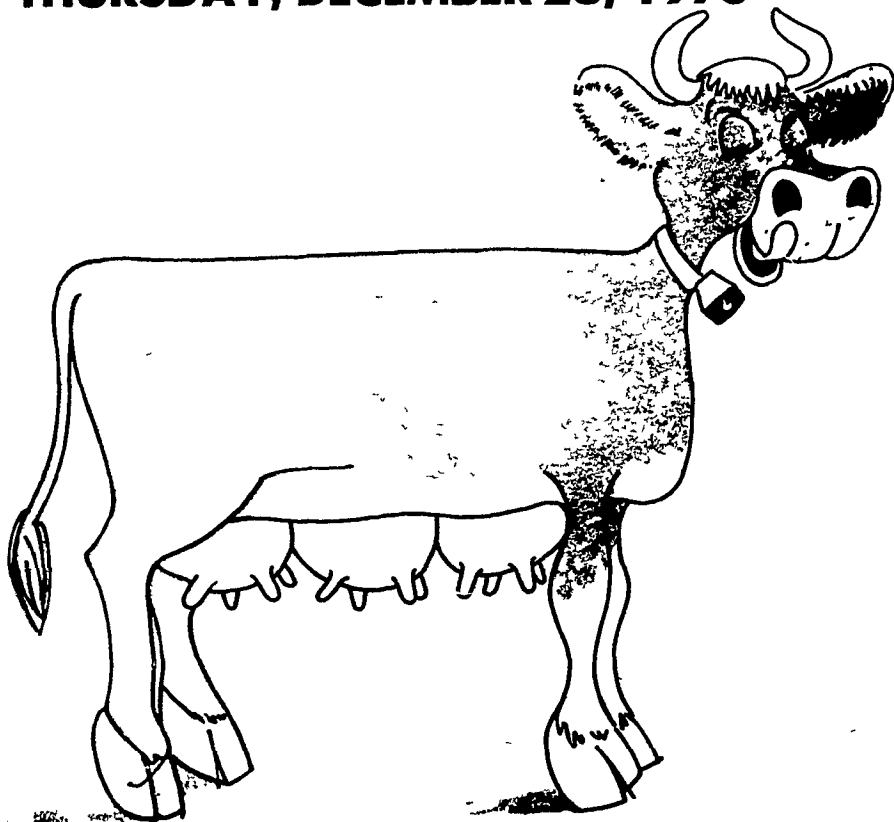
SOWS: US No. 1-3 40.50-44.00.

FEEDER PIGS 483. US No. 1-3 20-35 lbs. 22.00-36.00 per head, No. 1-3 35-50 lbs. 38.00-44.00.

SHEEP 24. Slaughter lambs higher. Choice 58.00-70.00; Good 54.00-60.00. EWES 19.00-23.00.

LANCASTER COUNTY HOLIDAY DAIRY TOUR

THURSDAY, DECEMBER 28, 1978



PAUL F. SAUDER
924 Silver Spring Rd.
Lancaster, PA

Milking 60 cows with a herd average of 14,900 lbs. milk and 560 fat. A free stall solar barn, farming 180 acres in corn, 70 acres alfalfa. Haylage is processed through a 20 x 70 HARVESTORE purchased in 1971 and a 20 x 80 HARVESTORE purchased in 1975. High moisture shelled corn is processed through a 20 x 40 HARVESTORE purchased in 1972. Total ration concept is used and no grain is fed while milking. A 61 x 15 SLURRYSTORE Liquid Manure system constructed December 1976 stores 7 months manure on the Sauder Farm.

CHARNELL MANOR FARM R.D. #2, Lancaster, PA

Milking 70 cows in a tie stall barn with a herd average of 14,743. Feeding 1/2 cornlage and 1/2 haylage. 20 x 70 HARVESTORE for haylage, 20 x 30 HARVESTORE for high moisture shelled corn, 20 x 80 HARVESTORE for cornlage, and a 4215 SLURRYSTORE Liquid Manure System.

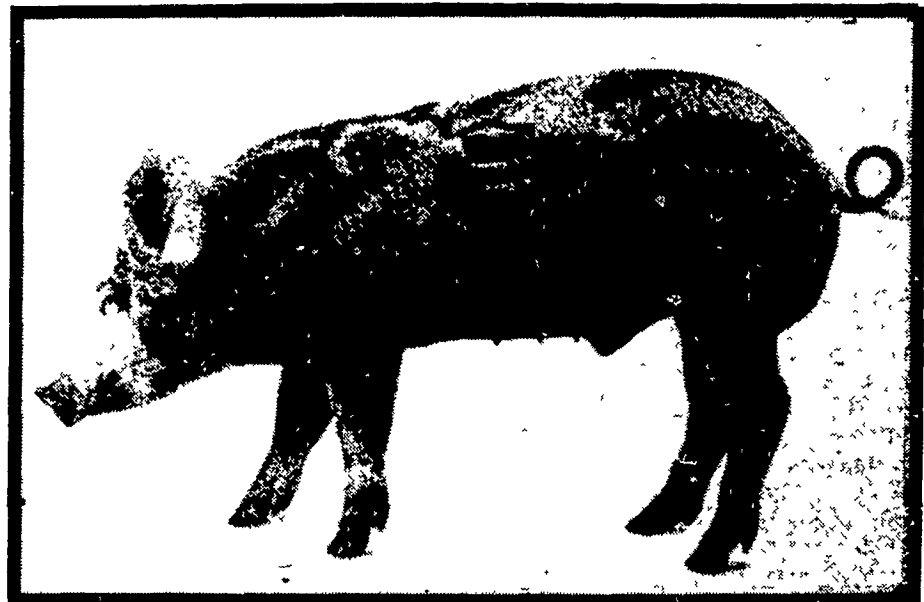
DONALD BARE, DOUBLE SPRING FARM 1801 Millport Road Lancaster, PA

Milking 60 cows with a herd average of 18,536. Farming 275 acres divided between corn and alfalfa. 20 x 70 HARVESTORE for haylage, and a 20 x 32 HARVESTORE for shelled corn.



FRANKLIN COUNTY SWINE TOUR

THURSDAY, DECEMBER 21, 1978



MR. & MRS. ADIN FREY
Frey's Farm Dairy
R.D. 8, Chambersburg, PA

Mr. and Mrs. Frey have for many years operated a large 200 to 250 cow dairy, processing and merchandising their milk production at the farm.

During 1977 a 25 x 65 HARVESTORE and an open fronted finishing house was added to the farm operation as a means of diversification. This hog finishing unit is constructed with slats over pit, central feeding room, HARVESTORE automation, and has a capacity of 960 hogs. The Freys purchase all the corn used in this finishing house and also purchase the corn to fill a 20 x 77 which is used as the principal feed in the dairy operation.

MR. & MRS. EUGENE WINGERT St. Thomas, PA

Mr. and Mrs. Wingert have, without a doubt, the most experience feeding High Moisture shelled corn and also high moisture barley to sows, nursery pigs and finishing hogs of any farmer throughout the East Coast.

Starting with a 20 x 27 HARVESTORE in 1967 and a uniform cycling feeder located in an outside paved barn yard, the Wingerts finished upwards to 2500 hogs a year. The HARVESTORE was filled and refilled during a years production numerous times with both barley and corn.

The Wingerts had constructed a modern farrowing house earlier in the 60's, which has many advantages compared to our present day modern farrowing facilities, that serves the purpose real well to farrow the present sow herd of close to 200 sows.

In 1977 a 20 x 50 HARVESTORE and an open fronted finishing house were added to the operation. The finishing house is basically an open fronted house with slats and pit.

• LUNCH SERVED • CALL FOR RESERVATIONS 717-354-4051

PENN-JERSEY HARVESTORE SYSTEMS INC.