

Moyer

(Continued from Page 1)

the honor for the most milk per cow under Berks County's program and a year ago he was second for both milk and fat.

When Moyer began managing a dairy farm in

1970 it was the realization of a life-long ambition, Moyer recalled recently during a conversation in his kitchen. "The farm is owned by Robert Junge, a minister who got a hold of me and asked me if I'd be interested in farming for him. He wanted beef cattle but I told him I didn't know much about beef. I felt I didn't

have an eye for it and couldn't do a good job. So Junge checked with Penn State and we went into the dairy business.

"I looked for good-uddered cows with a good top line, and good legs and feet. In other words, good, sound dairy animals.

"My goals and my ideals of what a cow should look like have changed since then. Back then a good cow was one which classified Good Plus and produced 16,000 pounds of milk. They're the kind I was looking for.

"Today, I generally figure if a cow can't make 20,000 pounds of milk per year by the time she's a 3 or 4-year old, she can't stay. I'm now looking for cows which would classify Very Good to Excellent."

The most recent classification average at Junge Farms boasts 106.8 per cent B.A.A. The herd consists of four Excellents, 26 Very Goods, and all others at Good Plus. One of the Excellent cows was bred by Junge. "The others we developed here, because I had purchased them as heifers."



Sweeping the feed back within reach of the cows is one simple procedure which Moyer has found rewarding in his dairy cow management. To him it has meant higher production at no extra cost.

For the past five years Moyer has purchased "better pedigreed cows." He believes it pays if "you have luck with them and they develop right."

Genetics, says Moyer, is unquestionably the number one variable which determines a cow's worth in the herd. "It has to be," he affirmed.

"And," he continued, "management is probably a part of genetics, because you have to manage your breeding program."

"There is no difference here in management and feeding from one cow to the next. But we have one cow in the barn which gives 15,000 pounds of milk per year, and another at nearly 30,000. The difference is genetics, not feeding or management."

"But you have to provide good feed," Moyer em-

phasized with his next breath. "We try to get the crops in good. We work pretty late and we work fast."

Junge Farms consists of 550 acres, of which 450 are tillable. The cropping program consists of 200 acres of corn, 125 of alfalfa, 85 of wheat and barley, 10 to 20 of sorghum, and about 50 of soybeans.

With a variety of abundant crops at his disposal, Moyer

(Turn to Page 22)

DOES YOUR FARM EQUIPMENT HAVE DIESEL PROBLEMS?????

Contact us

MILLER DIESEL INC.

Specializing in Diesel fuel injection pumps, injectors and turbochargers.

6030 Jonestown Rd.
Harrisburg, Pa. 17112

717-545-5931

Interstate 81 Exit 26

In addition to our repair service, we offer a fast exchange system for fuel injection pumps, injectors and governors. Let us solve your diesel problems. You can depend on us for fast efficient service.

We welcome all farm equipment dealers business.

ELMER M. SHREINER

T/A

Good's Feed Mill

R.D.1, NEW PROVIDENCE, PA.

PHONE (717) 786-2500



pennfield feeds

NOW HANDLING:
PENNFIELD FEEDS — MOPRO-
LIQUID PROTEIN — AND A COM-
PLETE LINE OF ANIMAL HEALTH
PRODUCTS AND SUPPLIES.

FULL SERVICE DEALER



The M-M-MOO-ORVELOUS Feeds
that help your herd produce M-M-
MOO-ORE.

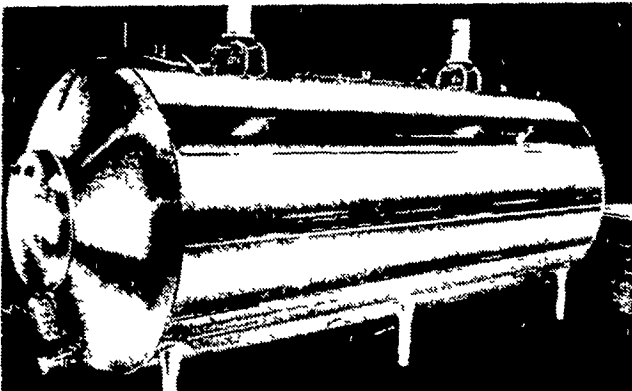
FREE ► Super Heater and 800 Gal. Holding Tank

With Any Zero Cooler Ordered
Before January 1, 1979

8% Price Increase January 1, 1979

FEATURING....

- ★ Quicker cooling to lower temp.
- ★ Lower installation cost
- ★ More efficient cooling
- ★ Solid state controls
- ★ Automatic Splatter Spray Wash



CONSULTING LAYOUT MODERNIZING

PROMPT SERVICE
SERVING LANCASTER, CHESTER AND CECIL COUNTIES

W & J DAIRY SALES

R. D. 2, OXFORD, PA. 19363
CALL BILL GUHL 717-529-2569

AGRIflow®

3", 4", 5", 6", 8", 10" AND 12" TUBING



HEAVY GRADE TUBING
Exceeds SCS
Specifications

SPECIAL SALE IN 4" TUBING
Now through December 31

COCALICO EQUIPMENT CO.



DRAINAGE &
EXCAVATING
RD #3, DENVER, PA. 17517
(215) 267-3808